

UNITED STATES
DEPARTMENT OF THE INTERIOR
BUREAU OF LAND MANAGEMENT

APPLICATION FOR PERMIT TO DRILL, DEEPEN, OR PLUG BACK

1a. TYPE OF WORK
DRILL ☒ DEEPEN ☐ PLUG BACK ☐

b. TYPE OF WELL
OIL WELL ☐ GAS WELL ☒ OTHER ☐
SINGLE ZONE ☒ MULTIPLE ZONE ☐

2. NAME OF OPERATOR
Amoco Production Co.

3. ADDRESS OF OPERATOR
501 Airport Drive, Farmington, N M 87401

4. LOCATION OF WELL (Report location clearly and in accordance with any State requirements.)
At surface
1650' FSL x 1570' FEL
At proposed prod. zone same

14. DISTANCE IN MILES AND DIRECTION FROM NEAREST TOWN OR POST OFFICE
19 Miles southeast of Bloomfield, NM

15. DISTANCE FROM PROPOSED*
LOCATION TO NEAREST
PROPERTY OR LEASE LINE, FT.
(Also to nearest drlg. unit line, if any)
1570'

16. NO. OF ACRES IN LEASE
1560.562523.52

13. DISTANCE FROM PROPOSED LOCATION*
TO NEAREST WELL, DRILLING, COMPLETED,
OR APPLIED FOR, ON THIS LEASE, FT.
440' S

19. PROPOSED DEPTH
6965'

20. ROTARY OR CABLE TOOLS
Rotary

21. ELEVATIONS (Show whether DF, RT, GR, etc.)
16309' GR

DRILLING OPERATIONS AUTHORIZED ARE
SUBJECT TO COMPLIANCE WITH ATTACHED
"GENERAL REQUIREMENTS".

22. APPROX. DATE WORK WILL START*
as soon as permitted

23. PROPOSED CASING AND CEMENTING PROGRAM

This action is subject to administrative
appeal pursuant to 30 CFR 290.

| SIZE OF HOLE | SIZE OF CASING | WEIGHT PER FOOT | SETTING DEPTH | QUANTITY OF CEMENT |
|--------------|----------------|-----------------|---------------|--------------------|
| 12-1/2" | 8-5/8" | 24#. J-55 | 300' | 354 cu.ft. Class B |
| 7-7/8" | 4-1/2" | 10.5#, K-55 | 6965' | 2289 cu ft Class B |

Amoco proposes to drill the above well to further develop the Basin Dakota reservoir. The well will be drilled to the surface casing point using native mud. The well will then be drilled to TD with a low solids nondispersed mud system. completion. Amoco's standard blowout prevention will be employed; see attached drawing for blowout preventer design. Upon completion the well site will be cleaned and the reserve pit filled and leveled. The gas from this well is dedicated to Southern Union Gas Co. under contract No. 40797.

IN ABOVE SPACE DESCRIBE PROPOSED PROGRAM: If proposal is to deepen or plug back, give data on present productive zone and proposed productive zone. If proposal is to drill or deepen directionally, give pertinent data on subsurface locations and measured true vertical depths. Give blowout preventer program, if any.

24. SIGNED BDS Shaw TITLE Adm. Supervisor

(This space for Federal or State office use)

PERMIT NO. _____ APPROVAL DATE _____

APPROVED BY _____ TITLE _____
CONDITIONS OF APPROVAL, IF ANY:

NMOCC

*See Instructions On Reverse Side

RECEIVED
MAR 18 1985

OIL CON. DIV.
DIST. 3

APPROVED
DATE 3/14/85

AS AMENDED

MAR 14 1985

AREA MANAGER
FARMINGTON RESOURCE AREA

OIL CONSERVATION DIVISION

P.O. BOX 2088
SANTA FE, NEW MEXICO 87501

Form C-102
Revised 10-1-77

All distances must be from the outer boundaries of the Section.

| | | | | | |
|--------------------------------------------------------------------------------------------------------------------------------|--------------------------------------|------------------------|------------------------------------|---------------------------|----------------------------------------|
| Operator AMOCO PRODUCTION COMPANY | | | Lease R. P. HARGRAVE "H" | | Well No. 1E |
| Unit Letter J | Section 9 | Township 27N | Range 10W | County San Juan | |
| Actual Footage Location of Well: 1650 feet from the South line and 1570 feet from the East line | | | | | |
| Ground Level Elev: 6309 | Producing Formation Dakota | | Pool Basin Dakota | | Dedicated Acreage: 320 Acres |

1. Outline the acreage dedicated to the subject well by colored pencil or hachure marks on the plat below.
2. If more than one lease is dedicated to the well, outline each and identify the ownership thereof (both as to working interest and royalty).
3. If more than one lease of different ownership is dedicated to the well, have the interests of all owners been consolidated by communitization, unitization, force-pooling, etc?

☐ Yes ☒ No If answer is "yes," type of consolidation _____

If answer is "no," list the owners and tract descriptions which have actually been consolidated. (Use reverse side of this form if necessary.) _____

No allowable will be assigned to the well until all interests have been consolidated (by communitization, unitization, forced-pooling, or otherwise) or until a non-standard unit, eliminating such interests, has been approved by the Commission.

| | |
|--|------------------------------------------------------------------------------------------|
| | <p>RECEIVED MAR 04 1985 BUREAU OF LAND MANAGEMENT SARASOTA RESOURCE AREA</p> |
| | |

RECEIVED
MAR 18 1985
OIL CON. DIV.
DIST. 3

Scale: 1"=1000'

CERTIFICATION

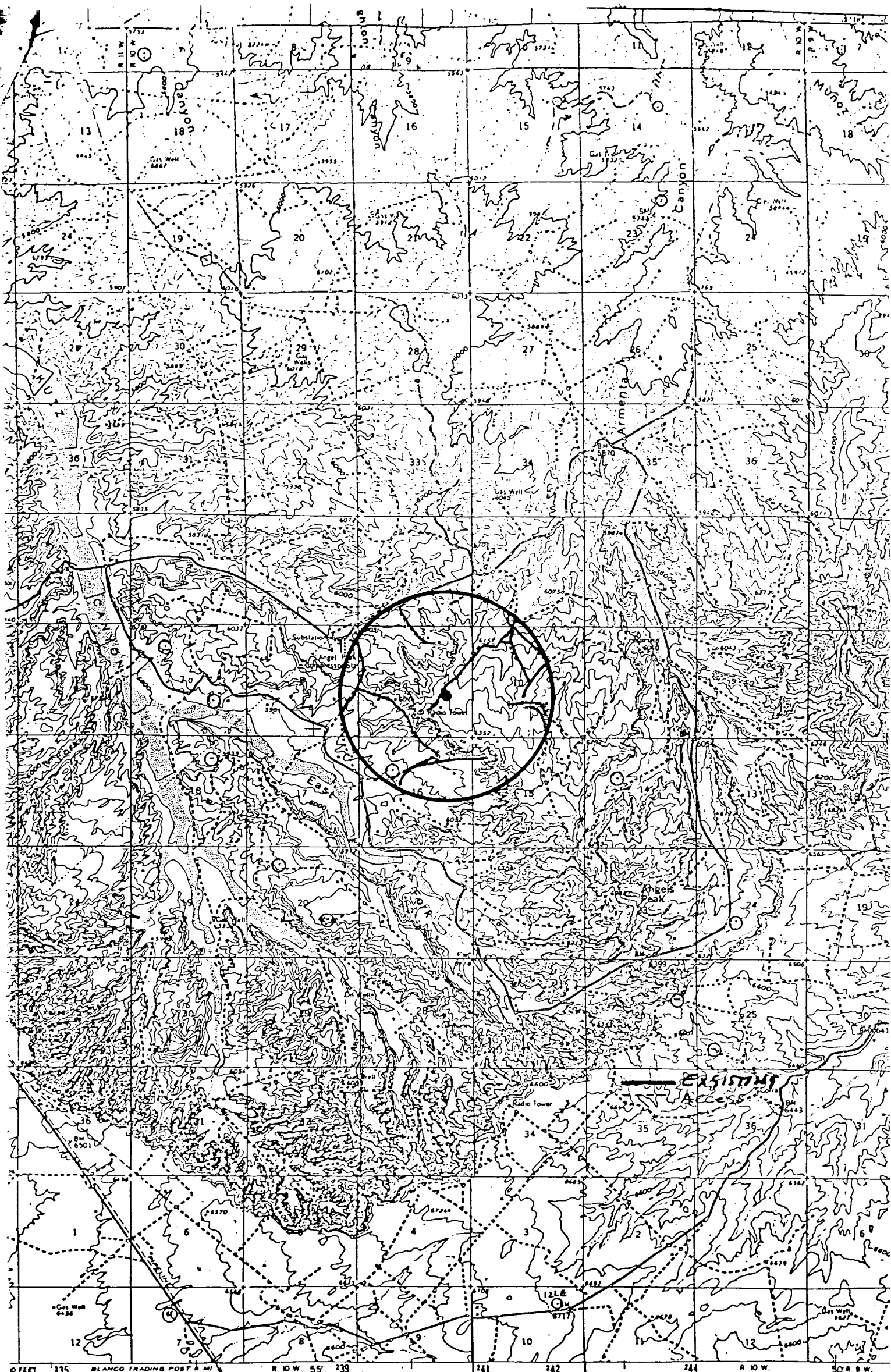
I hereby certify that the information contained herein is true and complete to the best of my knowledge and belief.

B.D. Shaw

Name
B.D. Shaw
Position
Adm. Supervisor
Company
Amoco Production Co.
Date
2-26-85

I hereby certify that the well location shown on this plat was plotted from field notes of actual surveys made by me or under my supervision, and that the same is true and correct to the best of my knowledge and belief.

Date Surveyed
December 18, 1984
Registered Professional Engineer and Land Surveyor
Fred B. Kerr Jr.
Certificate No. **3950**



0 FEET 235 BLANCO TRADING POST 8 MI. R. 10 W. 55' 239 241 242 244 R. 10 W. 50 R. 9 W.

ical Survey

Exhibit "B"

Vicinity Map for
AMOCO PRODUCTION COMPANY #1E R. P. HARGRAVE "H"
1650' FSL 1570' FEL Sec. 9-T27N-R10W
SAN JUAN COUNTY, NEW MEXICO

1" = 1 MILE
1" = 1 KILOMETER