

UNITED STATES  
DEPARTMENT OF THE INTERIOR  
GEOLOGICAL SURVEY

70-045-26346

APPLICATION FOR PERMIT TO DRILL, DEEPEN, OR PLUG BACK

1a. TYPE OF WORK

DRILL

DEEPEN

PLUG BACK

b. TYPE OF WELL

OIL WELL

GAS WELL

OTHER

SINGLE ZONE

MULTIPLE ZONE

2. NAME OF OPERATOR

Dugan Production Corp.

3. ADDRESS OF OPERATOR

P O Box 208, Farmington, NM 87499

4. LOCATION OF WELL (Report location clearly and in accordance with any State requirements.)

At surface  
1850' FNL - 790' FWL  
At proposed prod. zone

RECEIVED  
APR 17 1985

BUREAU OF LAND MANAGEMENT

14. DISTANCE IN MILES AND DIRECTION FROM NEAREST TOWN OR POST OFFICE TO PROPOSED WELL LOCATION

8 miles northwest of Chaco Plant

15. DISTANCE FROM PROPOSED\* LOCATION TO NEAREST PROPERTY OR LEASE LINE, FT. (Also to nearest drlg. unit line, if any)

790' FWL

16. NO. OF ACRES IN LEASE

367.44

17. NO. OF ACRES ASSIGNED TO THIS WELL

40

18. DISTANCE FROM PROPOSED LOCATION\* TO NEAREST WELL, DRILLING, COMPLETED, OR APPLIED FOR, ON THIS LEASE, FT.

700' west of DPC's Faith #1

19. PROPOSED DEPTH

5350'

20. ROTARY OR CABLE TOOLS

Rotary

21. ELEVATIONS (Show whether DF, RT, GR, etc.)

6108' GL

DRILLING OPERATIONS AUTHORIZED ARE

ASAP

23. SUBJECT TO COMPLIANCE WITH ATTACHED PROPOSED DRILLING AND CEMENTING PROGRAM "GENERAL REQUIREMENTS"

This action is subject to administrative appeal pursuant to 30 CFR 290.

SIZE OF HOLE	SIZE OF CASING	WEIGHT PER FOOT	SETTING DEPTH	QUANTITY OF CEMENT
12-1/4"	8-5/8"	24#	200'	150 cf circ. to surface
7-7/8"	4-1/2"	10.5#	5350'	1741 cf in 2 stages

Plan to drill a 12 1/4" hole and set 200' of 8-5/8" OD, 24#, J-55 surface casing; then plan to drill a 7-7/8" hole to total depth with gel-water-mud program to test Gallup formation. Plan to run I.E.S. and C.D.L. logs. If deemed productive, will run 4 1/2", 10.5#, J-55 casing, selectively perforate, frac, clean out after frac, and complete well.

RECEIVED

MAY 07 1985

OIL CON. DIV.  
DIST. 3

IN ABOVE SPACE DESCRIBE PROPOSED PROGRAM: If proposal is to deepen or plug back, give data on present productive zone and proposed new productive zone. If proposal is to drill or deepen directionally, give pertinent data on subsurface locations and measured and true vertical depths. Give blowout preventer program, if any.

24.

SIGNED

*Sherman E. Dugan*  
Sherman E. Dugan

TITLE

Geologist

DATE 4-16-85

(This space for Federal or State office use)

PERMIT NO.

APPROVAL DATE

APPROVED  
AS AMENDED

APPROVED BY

TITLE

DATE

CONDITIONS OF APPROVAL, IF ANY:

MAY 03 1985  
/s/ J. Stan McKee

*ohd*

\*See Instructions On Reverse Side

MOCC

for M. MILLENBACH  
AREA MANAGER

All distances must be from the outer boundaries of the Section.

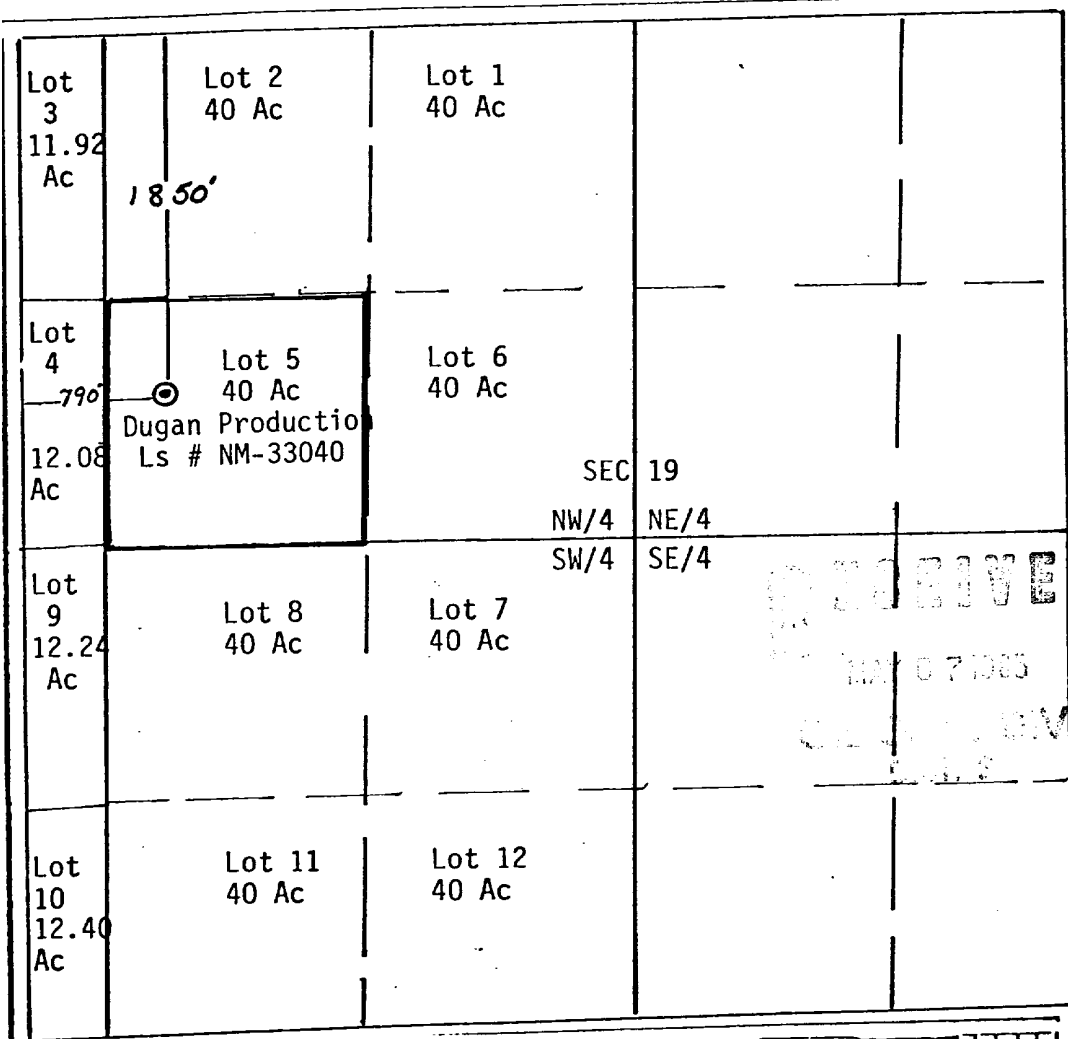
Operator <b>Dugan Production Corporation</b>		Lease <b>Faith</b>		Well No. <b>5</b>
Well Letter <b>E</b>	Section <b>19</b>	Township <b>27 North</b>	Range <b>13 West</b>	County <b>San Juan</b>
Actual Footage Location of Well: <b>1850</b> feet from the <b>North</b> line and <b>790</b> feet from the <b>West</b> line				
Ground Level Elev. <b>6108</b>	Producing Formation <b>Gallup</b>	Pool <b>Undesignated Gallup</b>	Dedicated Acreage: <b>40</b> Acres	

1. Outline the acreage dedicated to the subject well by colored pencil or hachure marks on the plat below.
2. If more than one lease is dedicated to the well, outline each and identify the ownership thereof (both as to working interest and royalty).
3. If more than one lease of different ownership is dedicated to the well, have the interests of all owners been consolidated by communitization, unitization, force-pooling, etc?

Yes  No If answer is "yes," type of consolidation \_\_\_\_\_

If answer is "no," list the owners and tract descriptions which have actually been consolidated. (Use reverse side of this form if necessary.) \_\_\_\_\_

No allowable will be assigned to the well until all interests have been consolidated (by communitization, unitization, forced-pooling, or otherwise) or until a non-standard unit, eliminating such interests, has been approved by the Division.



**CERTIFICATION**

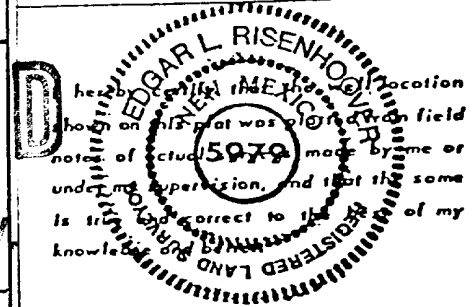
I hereby certify that the information contained herein is true and complete to the best of my knowledge and belief.

*Sherman E. Dugan*  
Name  
Sherman E. Dugan

Position  
Geologist

Company  
Dugan Production Corp.

Date  
4/29/85

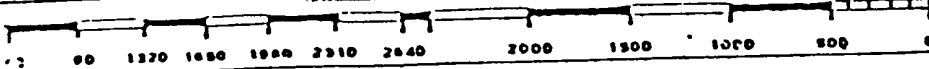


Date Surveyed  
March 27, 1985

Registered Professional Engineer  
and/or Land Surveyor

*Edgar L. Risenhoover*  
Certificate No. 5979

Edgar L. Risenhoover, L.S.



Distance from nearest town or reference pt.  
 8 miles NW of Chaco Plant.

Type of surface dirt

Conditions good

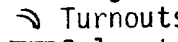
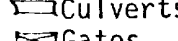
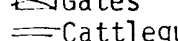
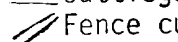

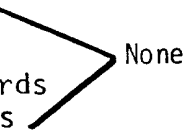
Other \_\_\_\_\_

Width 20' Maximum grades 2%

Drainage design None Required

Cuts & Fills None Required

Surfacing material On site

-  Turnouts
  -  Culverts
  -  Gates
  -  Cattleguards
  -  Fence cuts
- None 

Access road(s) do/do not cross Fed/Ind land  
 \*Proposed location & access road are on NAPI  
 farmland

