

UNITED STATES  
DEPARTMENT OF THE INTERIOR  
GEOLOGICAL SURVEY

## APPLICATION FOR PERMIT TO DRILL, DEEPEN, OR PLUG BACK

## 1a. TYPE OF WORK

DRILL ☒DEEPEN ☐PLUG BACK ☐

## b. TYPE OF WELL

OIL  
WELL ☐GAS  
WELL ☒

OTHER

SINGLE  
ZONE ☐MULTIPLE  
ZONE ☒

## 2. NAME OF OPERATOR

Southland Royalty Company

## 3. ADDRESS OF OPERATOR

P. O. Drawer 570, Farmington, New Mexico 87499

## 4. LOCATION OF WELL (Report location clearly and in accordance with any State requirements.)

At surface

1470' FNL &amp; 1470' FWL

At proposed prod. zone

## 14. DISTANCE IN MILES AND DIRECTION FROM NEAREST TOWN OR POST OFFICE

10 Miles South of Blanco, New Mexico

15. DISTANCE FROM PROPOSED\*  
LOCATION TO NEAREST  
PROPERTY OR LEASE LINE, FT.  
(Also to nearest drlg. unit line, if any)

1110'

18. DISTANCE FROM PROPOSED LOCATION\*  
TO NEAREST WELL, DRILLING, COMPLETED,  
OR APPLIED FOR, ON THIS LEASE, FT.

300'

## 16. NO. OF ACRES IN LEASE

960

## 19. PROPOSED DEPTH

6925'

17. NO. OF ACRES ASSIGNED  
TO THIS WELL

320/160

## 20. ROTARY OR CABLE TOOLS

Rotary

## 21. ELEVATIONS (Show whether DF, RT, GR, etc.)

6290' GL

## 22. APPROX. DATE WORK WILL START\*

August 1, 1985

## 23. PROPOSED CASING AND CEMENTING PROGRAM

SIZE OF HOLE	SIZE OF CASING	WEIGHT PER FOOT	SETTING DEPTH
12-1/4"	New 9-5/8"	32.30#, H-40	200'
8-3/4"	New 7"	23#, K-55	4900'
6-1/4"	New 4-1/2"	10.50#, K-55	6925'

DRILLING OPERATIONS AUTHORIZED ARE  
SUBJECT TO COMPLIANCE WITH ATTACHED

"GENERAL REQUIREMENTS"

130 cu. ft. - Circulate to surface  
1: 298 cuft (Cover Cliff House)  
2: 399 cuft (Cover Ojo Alamo)  
392 cuft (Circ liner)

Surface formation is San Jose.

Top of Ojo Alamo sand is at 1400'.

Top of Pictured Cliffs sand is at 2250'.

Fresh wter mud will be used to drill from surface to 4900', and an air/air system will be used to top of Gallup, 50/50 Air/Nitrogen mixture to total depth.

It is anticipated that an IEL will be run from total depth to surface casing and FDC/CNL will be run from total depth to 1100'.

No abnormal pressures or poisonous gases are anticipated in this well.

It is expected that this well will be drilled before December 1, 1985.

This depends on time required for approvals, rig availability and the weather.

Gas is dedicated.

IN ABOVE SPACE DESCRIBE PROPOSED PROGRAM: If proposal is to deepen or plug back, give data on present productive zone and proposed new productive zone. If proposal is to drill or deepen directionally, give pertinent data on subsurface locations and measured and true vertical depths. Give blowout preventer program, if any.

24.

SIGNED

TITLE Dist. Operations Engineer DATE 6-28-85

(This space for Federal or State office use)

PERMIT NO.

APPROVED BY

CONDITIONS OF APPROVAL, IF ANY:

TITLE

APPROVAL DATE

JUL 10 1985

OIL CON. DIV.  
DIST. 3

NMOCG

APPROVED  
AS AMENDED

DATE

JUL 09 1985

(SGD) MAT MILLENBACH  
M. MILLENBACH  
AREA MANAGER

OIL CONSERVATION DIVISION

P. O. BOX 2048  
SANTA FE, NEW MEXICO 87501

Form C-107  
Revised 10-1-78

All distances must be from the outer boundaries of the Section.

Operator <b>SOUTHLAND ROYALTY COMPANY</b>			Lease <b>WHITLEY</b>		Well No. <b>11</b>
Unit Letter <b>F</b>	Section <b>9</b>	Township <b>27N</b>	Range <b>9W</b>	County <b>San Juan</b>	
Actual Footage Location of Well: <b>1470</b> feet from the <b>North</b> line and <b>1470</b> feet from the <b>West</b> line					
Ground Level Elev: <b>6290' GL</b>	Producing Formation <b>Chacra/Mesaverde/Dakota</b>		Pool <b>Otero/Blanco/Basin</b>	Dedicated Acreage: <b>320/160</b> Acres	

1. Outline the acreage dedicated to the subject well by colored pencil or hachure marks on the plat below.
2. If more than one lease is dedicated to the well, outline each and identify the ownership thereof (both as to working interest and royalty).
3. If more than one lease of different ownership is dedicated to the well, have the interests of all owners been consolidated by communitization, unitization, force-pooling, etc?

☐ Yes ☐ No If answer is "yes," type of consolidation \_\_\_\_\_

If answer is "no," list the owners and tract descriptions which have actually been consolidated. (Use reverse side of this form if necessary.) \_\_\_\_\_

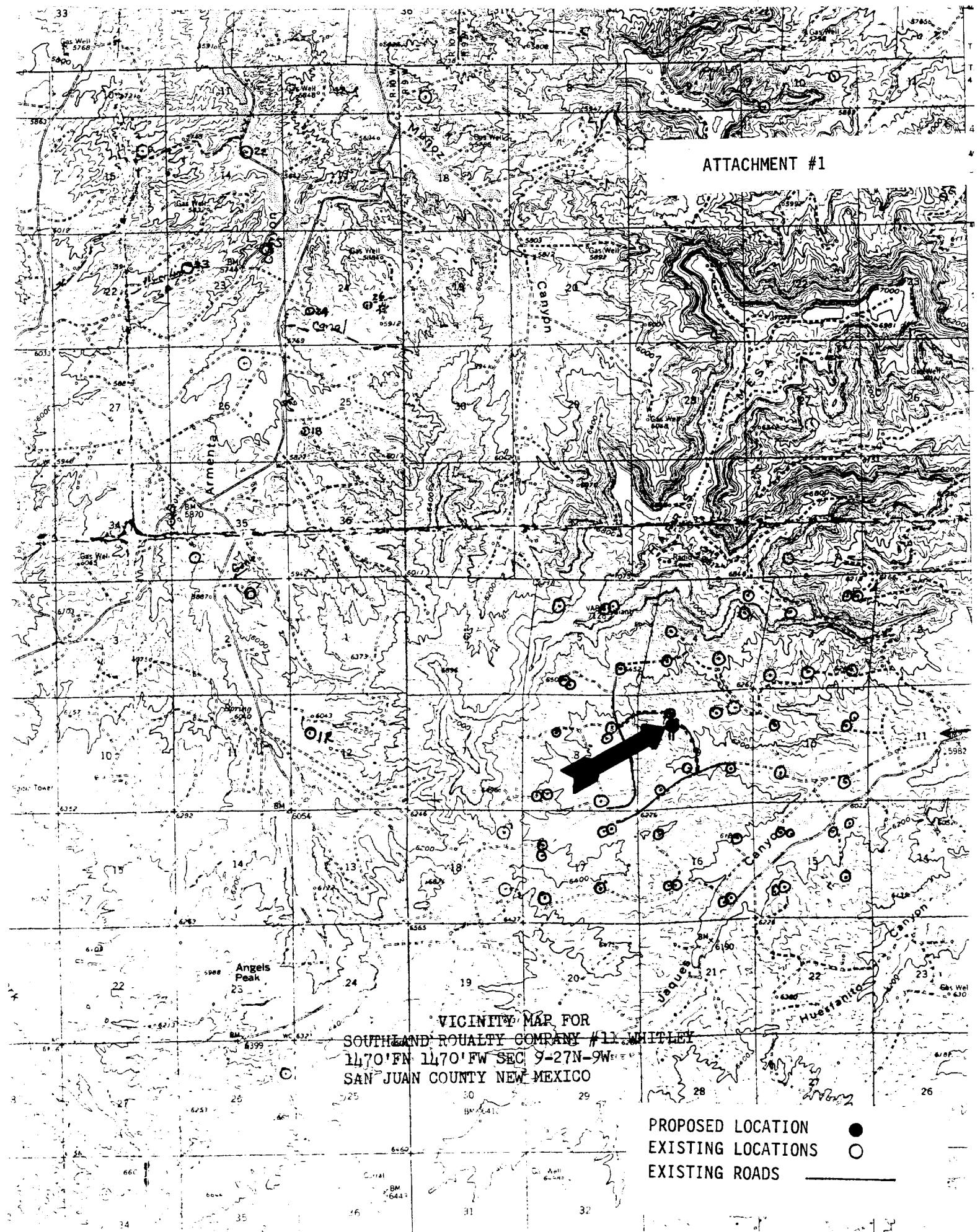
No allowable will be assigned to the well until all interests have been consolidated (by communitization, unitization, forced-pooling, or otherwise) or until a non-standard unit, eliminating such interests, has been approved by the Commission.

	<p align="center"><b>RECEIVED</b></p> <p align="center">JUL 01 1985</p> <p align="center">BUREAU OF LAND MANAGEMENT FARMINGTON RESOURCE AREA</p>
	<p align="center">9</p> <p align="center">JUL 10 1985</p> <p align="center">OIL CON. DIV.</p> <p align="center">DIST. 3</p>

Scale: 1"=1000'

<b>CERTIFICATION</b>	
I hereby certify that the information contained herein is true and complete to the best of my knowledge and belief.	
Name	<b>C. Terry Hobbs</b>
Position	<b>District Engineer</b>
Company	<b>Southland Royalty Company</b>
Date	<b>June 28, 1985</b>
I hereby certify that the well location shown on this plat was plotted from field notes of actual surveys made by me or under my supervision, and that the same is true and correct to the best of my knowledge and belief.	
Date Surveyed	<b>December 14, 1983</b>
Registered Professional Engineer and Land Surveyor	<b>Fred B. Kerr Jr.</b>
Certificate No.	<b>3950</b>

# ATTACHMENT #1



VICINITY MAP FOR  
SOUTHLAND ROYALTY COMPANY #11 WHITLEY  
1470'FN 1470'FW SEC 9-27N-9W  
SAN JUAN COUNTY NEW MEXICO

PROPOSED LOCATION ●  
EXISTING LOCATIONS ○  
EXISTING ROADS —