

UNITED STATES
DEPARTMENT OF THE INTERIOR
GEOLOGICAL SURVEY

(Other instructions on reverse side)

30-045-26523

APPLICATION FOR PERMIT TO DRILL, DEEPEN, OR PLUG BACK

1a. TYPE OF WORK

DRILL ☒

DEEPEN ☐

PLUG BACK ☐

b. TYPE OF WELL

OIL WELL ☒

GAS WELL ☐

OTHER ☐

SINGLE ZONE ☒

MULTIPLE ZONE ☐

2. NAME OF OPERATOR

DUGAN PRODUCTION CORP.

3. ADDRESS OF OPERATOR

P O Box 208, Farmington, NM 87499

4. LOCATION OF WELL (Report location clearly and in accordance with any State requirements.)

At surface

1850' FNL - 1850' FWL

At proposed prod. zone

14. DISTANCE IN MILES AND DIRECTION FROM NEAREST TOWN OR POST OFFICE*

6 miles south of Farmington

10. DISTANCE FROM PROPOSED*

LOCATION TO NEAREST PROPERTY OR LEASE LINE, FT. (Also to nearest drlg. unit line, if any)

1850'

16. NO. OF ACRES IN LEASE

640

17. NO. OF ACRES ASSIGNED TO THIS WELL

E 80

18. DISTANCE FROM PROPOSED LOCATION* approx. 1100' TO NEAREST WELL, DRILLING, COMPLETED, OR APPLIED FOR, ON THIS LEASE, FT. DPC's LaLeeAnn#2J

19. PROPOSED DEPTH

5330'

20. ROTARY OR CABLE TOOLS

Rotary

21. ELEVATIONS (Show whether DF, RT, GR, etc.)

6076' GL ; 6088' RKB

22. APPROX. DATE WORK WILL START*

ASAP

23. DRILLING OPERATIONS AUTHORIZED ARE SUBJECT TO COMPLIANCE WITH ATTACHED PROPOSED CASING AND CEMENTING PROGRAM "GENERAL REQUIREMENTS"

This action is subject to technical and procedural review pursuant to 43 CFR 3165.3 and appeal pursuant to 43 CFR 3165.4.

SIZE OF HOLE	SIZE OF CASING	WEIGHT PER FOOT	SETTING DEPTH	
12-1/4"	8-5/8"	24#	200'	150 cf circ. to surface
7-7/8"	4-1/2"	10.5#	5330'	1368 cf circ. to surface

Plan to drill a 12-1/4" hole and set 200' of 8-5/8" OD, 24#, J-55 surface casing; then plan to drill a 7-7/8" hole to total depth with gel-water-mud program to test the Gallup formation. Plan to run IES and CDL logs. If deemed productive, will run 4-1/2", 10.5#, J-55 casing, selectively perforate, frac, clean out after frac, and complete well.

RECEIVED
AUG 28 1985
OIL CON. DIV.
DIST. 3

IN ABOVE SPACE DESCRIBE PROPOSED PROGRAM: If proposal is to deepen or plug back, give data on present productive zone and proposed new productive zone. If proposal is to drill or deepen directionally, give pertinent data on subsurface locations and measured and true vertical depths. Give blowout preventer program, if any.

24. SIGNED Sherman E. Dugan
Sherman E. Dugan
(This space for Federal or State office use)

TITLE Geologist

DATE 8-7-85

PERMIT NO.

APPROVAL DATE

APPROVED BY

TITLE

CONDITIONS OF APPROVAL, IF ANY:

APPROVED
AS AMENDED

AUG 23 1985

Stan McKee

M. MILLENBACH
AREA MANAGER

*See Instructions On Reverse Side

NNOC

OIL CONSERVATION DIVISION

STATE OF NEW MEXICO
ENERGY AND MINERALS DEPARTMENTP. O. BOX 2088
SANTA FE, NEW MEXICO 87501Form C-102
Revised 10-1-78

All distances must be from the outer boundaries of the Section.

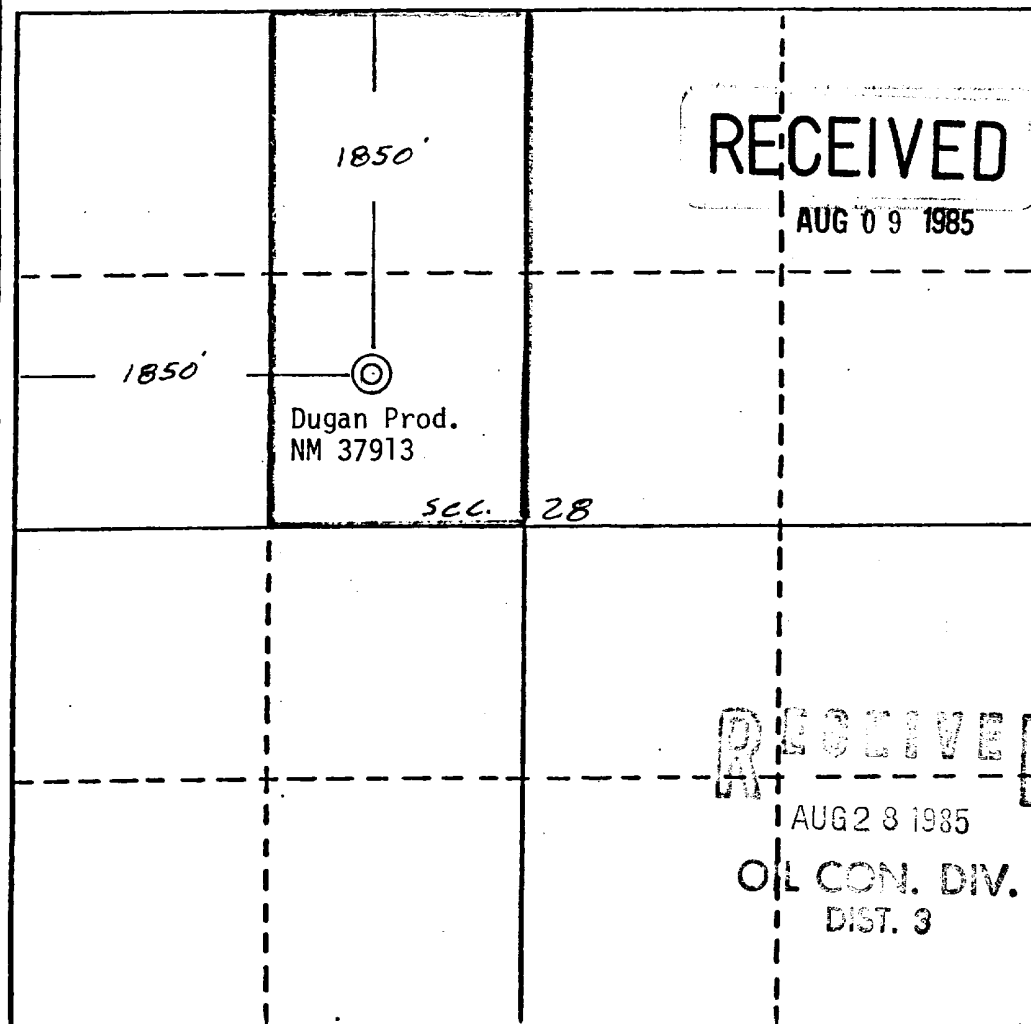
Operator Dugan Production Corporation		Lease La Lee Ann		Well No. 7
Unit Letter F	Section 28	Township 27 North	Range 13 West	County San Juan
Actual Footage Location of Well: 1850 feet from the North line and 1850 feet from the West line				
Ground Level Elev. 6076	Producing Formation Gallup	Pool Gallegos Gallup Ext.	Dedicated Acreage: 80 Acres	

1. Outline the acreage dedicated to the subject well by colored pencil or hatchure marks on the plat below.
2. If more than one lease is dedicated to the well, outline each and identify the ownership thereof (both as to working interest and royalty).
3. If more than one lease of different ownership is dedicated to the well, have the interests of all owners been consolidated by communitization, unitization, force-pooling, etc?

☐ Yes ☐ No If answer is "yes," type of consolidation _____

If answer is "no," list the owners and tract descriptions which have actually been consolidated. (Use reverse side of this form if necessary.) _____

No allowable will be assigned to the well until all interests have been consolidated (by communitization, unitization, forced-pooling, or otherwise) or until a non-standard unit, eliminating such interests, has been approved by the Division.



CERTIFICATION

I hereby certify that the information contained herein is true and complete to the best of my knowledge and belief.

Sherman E. Dugan
Name
Sherman E. Dugan

Position
Geologist

Company
Dugan Production Corp.

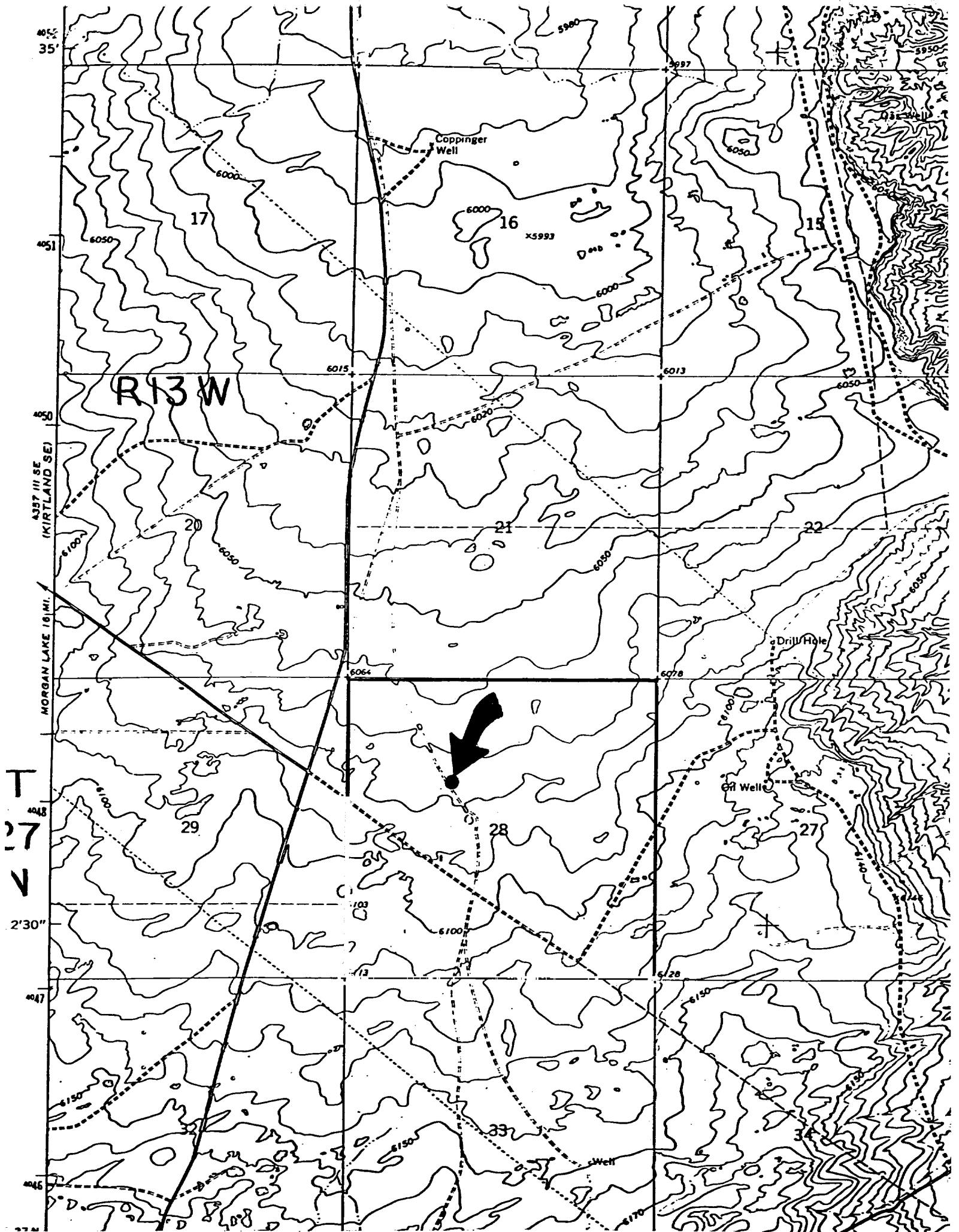
Date
8-7-85

Edgar L. Risenhoover
I, **EDGAR L. RISENHOOVER**, a duly licensed Professional Engineer and/or Land Surveyor in the State of New Mexico, do hereby certify that the location shown on this plat was plotted from field notes of actual surveys made by me or under my supervision, and that the same is true and correct to the best of my knowledge and belief.

Date Surveyed
July 30, 1985

Registered Professional Engineer
and/or Land Surveyor

Edgar L. Risenhoover
Certificate No. 5979
Edgar L. Risenhoover, L.S.



DUGAN PRODUCTION CORP. - La Lee Ann #7
Existing Roads Exhibit E

Distance from nearest town or reference pt.
6 miles to Farmington

Type of surface dirt

Conditions good

Other

DUGAN PRODUCTION CORP. - La Lee Ann #7
Planned Access Road(s) Exhibit F

Width Maximum grades

Drainage design

Cuts & Fills

Surfacing material

Turnouts

Culverts

Gates

Cattleguards

Fence cuts

NO ACCESS ROAD
REQUIRED

Access road(s) do/do not cross Fed/Ind land
NAPI farm