

UNITED STATES  
DEPARTMENT OF THE INTERIOR  
GEOLOGICAL SURVEY

## APPLICATION FOR PERMIT TO DRILL, DEEPEN, OR PLUG BACK

## 1a. TYPE OF WORK

DRILL ☒DEEPEN ☐PLUG BACK ☐

## b. TYPE OF WELL

OIL  
WELL ☒GAS  
WELL ☐

OTHER

SINGLE  
ZONE ☒MULTIPLE  
ZONE ☐

## 2. NAME OF OPERATOR

DUGAN PRODUCTION CORP.

## 3. ADDRESS OF OPERATOR

P O Box 208, Farmington, NM 87499

## 4. LOCATION OF WELL (Report location clearly and in accordance with any State requirements\*)

At surface

1850' FSL - 1850' FWL

At proposed prod. zone

## 14. DISTANCE IN MILES AND DIRECTION FROM NEAREST TOWN OR POST OFFICE\*

6 miles South from Farmington, NM

## 15. DISTANCE FROM PROPOSED\*

LOCATION TO NEAREST  
PROPERTY OR LEASE LINE, FT.

1850'

(Also to nearest drlg. unit line, if any)

## 18. DISTANCE FROM PROPOSED LOCATION\* approx. 885'

TO NEAREST WELL, DRILLING, COMPLETED,  
OR APPLIED FOR, ON THIS LEASE, FT.to  
DPC's LaLeeAnn #3.

## 16. NO. OF ACRES IN LEASE

640

## 19. PROPOSED DEPTH

5320'

## 17. NO. OF ACRES ASSIGNED

TO THIS WELL

80

## 20. ROTARY OR CABLE TOOLS

Rotary

## 21. ELEVATIONS (Show whether DF, RT, GR, etc.)

6090' GL; 6102' RKB

DRILLING OPERATIONS AUTHORIZED ARE  
SUBJECT TO COMPLIANCE WITH ATTACHED

\* GENERAL REQUIREMENTS AND CEMENTING PROGRAM

This action is subject to technical and  
procedural review pursuant to 43 CFR 3165.3  
and appeal pursuant to 43 CFR 3165.4.

SIZE OF HOLE	SIZE OF CASING	WEIGHT PER FOOT	SETTING DEPTH	
12-1/4"	8-5/8"	24#	200'	150' cf circ. to surface
7-7/8"	4-1/2"	10.5#	5320'	1372' cf circ. to surface

Plan to drill a 12-1/4" hole and set 200' of 8-5/8" OD, 24#, J-55 surface casing; then plan to drill a 7-7/8" hole to total depth with gel-water-mud program to test the Gallup formation. Plan to run IES and CDL logs. If deemed productive, will run 4-1/2", 10.5#, J-55 casing, selectively perforate, frac, clean out after frac, and complete well.

RECEIVED

AUG 28 1985

OIL CON. DIV.

DIST. 3

IN ABOVE SPACE DESCRIBE PROPOSED PROGRAM: If proposal is to deepen or plug back, give data on present productive zone and proposed new productive zone. If proposal is to drill or deepen directionally, give pertinent data on subsurface locations and measured and true vertical depths. Give blowout preventer program, if any.

24.

SIGNED

*Sherman E. Dugan*  
Sherman E. Dugan

TITLE

Geologist

(This space for Federal or State office use)

PERMIT NO.

APPROVAL DATE

APPROVED BY

TITLE

CONDITIONS OF APPROVAL, IF ANY:

\*See Instructions On Reverse Side

NMOCC

APPROVED  
AS AMENDED

AUG 23 1985

Stan McKee

M. MILLENBACH  
AREA MANAGER

## OIL CONSERVATION DIVISION

STATE OF NEW MEXICO  
ENERGY AND MINERALS DEPARTMENTP. O. BOX 2088  
SANTA FE, NEW MEXICO 87501Form C-102  
Revised 10-1-78

All distances must be from the outer boundaries of the Section.

Operator Dugan Production Corporation		Lease La Lee Ann		Well No. 6
Unit Letter K	Section 28	Township 27 North	Range 13 West	County San Juan
Actual Footage Location of Well: 1850 feet from the South line and 1850 feet from the West line				
Ground Level Elev. 6090	Producing Formation Gallup.	Pool Gallegos Gallup Ext.	Dedicated Acreage: 80 Acres	

1. Outline the acreage dedicated to the subject well by colored pencil or hatchure marks on the plat below.
2. If more than one lease is dedicated to the well, outline each and identify the ownership thereof (both as to working interest and royalty).
3. If more than one lease of different ownership is dedicated to the well, have the interests of all owners been consolidated by communitization, unitization, force-pooling, etc?

☐ Yes ☐ No If answer is "yes," type of consolidation \_\_\_\_\_

If answer is "no," list the owners and tract descriptions which have actually been consolidated. (Use reverse side of this form if necessary.) \_\_\_\_\_

No allowable will be assigned to the well until all interests have been consolidated (by communitization, unitization, forced-pooling, or otherwise) or until a non-standard unit, eliminating such interests, has been approved by the Division.

<div style="text-align: center;">RECEIVED AUG 09 1985</div>		<div style="text-align: center;">RECEIVED AUG 28 1985 OIL CON. DIV DIST. 2</div>	
Dugan Prod. NM 37913		1850	
1850		1850	

## CERTIFICATION

I hereby certify that the information contained herein is true and complete to the best of my knowledge and belief.

*Sherman E. Dugan*  
Name  
Sherman E. Dugan

Position  
Geologist

Company  
Dugan Production Corp.

Date  
8-7-85

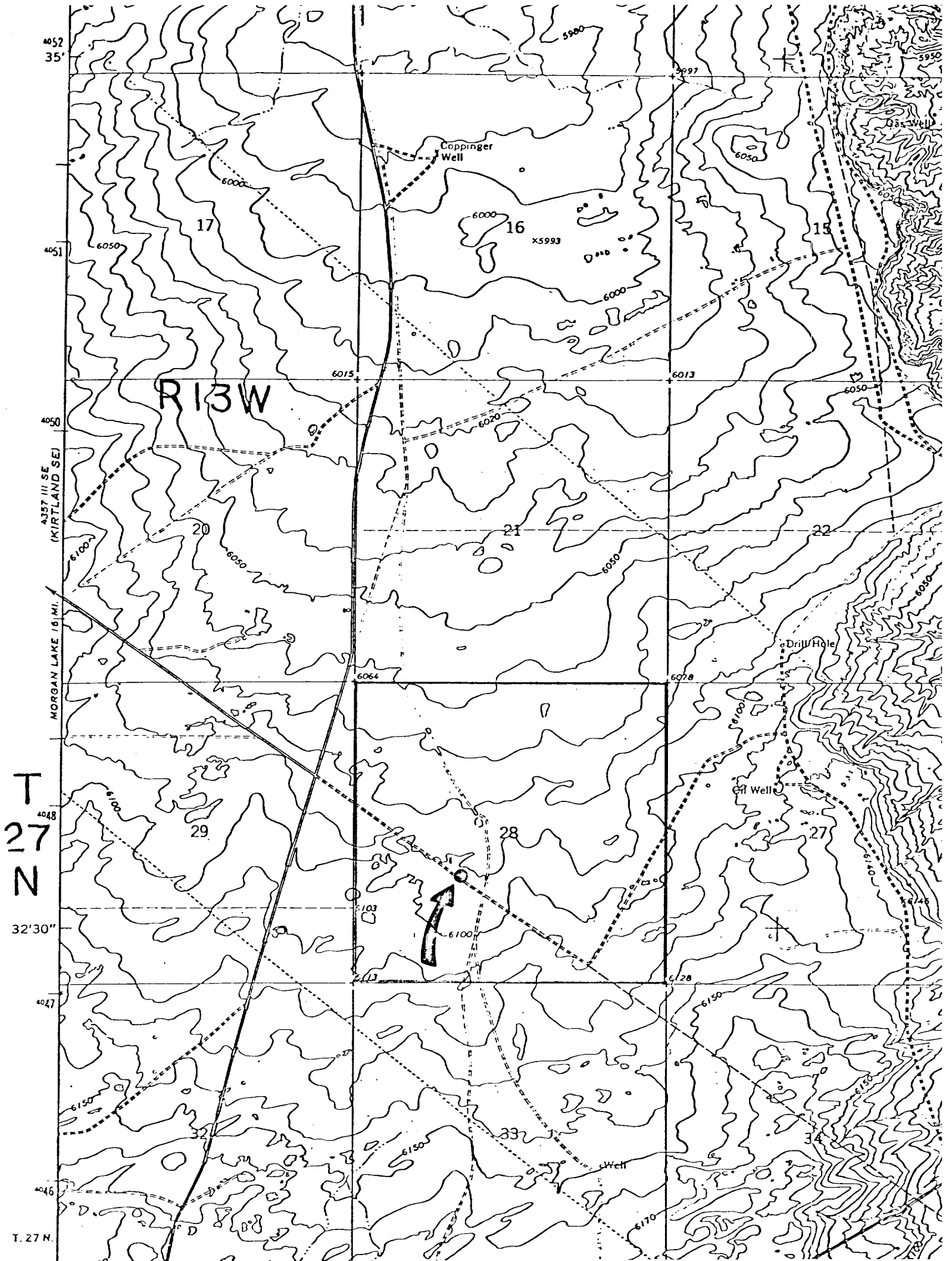
I hereby certify that the location shown on this plat was properly noted of actual location made by me or under my supervision, and that the same is true and correct to the best of my knowledge and belief.

Date Surveyed  
July 30, 1985

Registered Professional Engineer  
and/or Land Surveyor

*Edgar L. Risenhoover*

Certificate No. 5979  
Edgar L. Risenhoover, P. E.



DUGAN PRODUCTION CORP. - La Lee Ann #6

Existing Roads

Exhibit E

Distance from nearest town or reference pt.  
6 miles North to Farmington, NM

Type of surface dirt

Conditions good

Other

\*Note: Roads in this mapped area are not necessarily accurate.

DUGAN PRODUCTION CORP. - La Lee Ann #6

Planned Access Road(s)

Exhibit E

Width Maximum grades

Drainage design

Cuts & Fills

Surfacing material

Turnouts

Culverts

Gates

Cattleguards

Fence cuts

NO ACCESS ROAD  
REQUIRED

Access road(s) do/do not cross Fed/Ind land.