



TONEY ANAYA  
GOVERNOR

STATE OF NEW MEXICO  
ENERGY AND MINERALS DEPARTMENT  
OIL CONSERVATION DIVISION

July 22, 1985



1935 - 1985

POST OFFICE BOX 2088  
STATE AND OFFICE BUILDING  
SANTA FE, NEW MEXICO 87501  
(505) 827-5800

Tenneco Oil Exploration  
and Production

Attention: Scott McKinney

Administrative Order NSL-2089

Gentlemen:

Reference is made to your application for a non-standard location for your Michener LS Well No. 3M to be located 2515 feet from the North line and 1095 feet from the West line of Section 15, Township 28 North, Range 9 West, NMPM, Blanco Mesaverde and Basin Dakota Pools, San Juan County, New Mexico. The W/2 of said Section 15 is dedicated to both the Blanco Mesaverde and Basin Dakota Pools.

By authority granted me under the provisions of Rule 104 F(I), the above-described unorthodox location is hereby approved.

Sincerely,

R. L. STAMETS, DIRECTOR

RLS/DC/dr

cc: ✓ Oil Conservation Division - Aztec  
Bureau of Land Management - Farmington

RECEIVED

JUL 25 1985

OIL CON. DIV.  
DIST. 3



STATE OF NEW MEXICO  
ENERGY AND MINERALS DEPARTMENT  
OIL CONSERVATION DIVISION  
AZTEC DISTRICT OFFICE

1000 RIO BRAZOS ROAD  
AZTEC, NEW MEXICO 87410  
(505) 334-6178

OIL CONSERVATION DIVISION  
BOX 2088  
SANTA FE, NEW MEXICO 87501

DATE 7-3-85

RE: Proposed MC \_\_\_\_\_  
Proposed DHC \_\_\_\_\_  
Proposed NSL X \_\_\_\_\_  
Proposed SWD \_\_\_\_\_  
Proposed WFX \_\_\_\_\_  
Proposed PMX \_\_\_\_\_

Gentlemen:

I have examined the application dated 6-27-85  
for the Tenneco Oil Exp/Prod. Michener LS#3M E-15-28N-9W  
Operator Lease and Well No. Unit, S-T-R

and my recommendations are as follows:

Approve  
\_\_\_\_\_  
\_\_\_\_\_  
\_\_\_\_\_  
\_\_\_\_\_  
\_\_\_\_\_

Yours truly,

E. Busch

**Tenneco Oil**  
**Exploration and Production**  
A Tenneco Company

6162 South Willow Drive  
P.O. Box 3249  
Englewood, Colorado 80155  
(303) 740-4800



Western Rocky Mountain Division

June 24, 1985

CERTIFIED MAIL  
Return Receipt Requested

New Mexico Oil Conservation Commission  
P. O. Box 2088  
Santa Fe, NM 87501  
Attn: R. L. Stamets

New Mexico Oil Conservation Commission  
1000 Rio Brazos Rd.  
Aztec, NM 87410  
Attn: Frank Chavez

RECEIVED  
JUN 27 1985  
OIL CON. DIV.  
DIST. 3

RE: Michener LS 3M  
2515' FNL, 1095' FWL  
Sec. 15, T28N R9W  
San Juan County, NM

Gentlemen:

Attached in duplicate (to each office) are a well location plat (C-102) with an ownership plat for the above referenced well.

Due to steep topography and cliffs to the north, this location does not meet state spacing requirements. This is the only geologic and topographic site acceptable.

Pursuant to the authority of Rule 104-F, we respectfully request your approval of an exemption to the standard well location requirements.

Very truly yours,

TENNECO OIL COMPANY

*Scott McKinney*  
Scott McKinney  
Sr. Regulatory Analyst

SMc:st

Attachments

Page 2  
Application for Unorthodox Location  
June 24, 1985

WAIVER

\_\_\_\_\_ hereby waives objection to Tenneco Oil  
Company's application for unorthodox location for their Tenneco Michener LS  
3M, proposed above.

BY: \_\_\_\_\_

DATE: \_\_\_\_\_

SMc:st  
Attachments

cc: Offset Operators:

El Paso Natural Gas  
Post Office Box 4990  
Farmington, NM 87401  
Attention: Don Reed

Southern Union Exploration Company  
Post Office Box 2179  
Farmington, NM 87499  
Attention: Michael L. Davis

NEW MEXICO OIL CONSERVATION COMMISSION  
WELL LOCATION AND ACREAGE DEDICATION PLAT

Form C-102  
Supersedes C-128  
Effective 1-1-65

All distances must be from the outer boundaries of the Section.

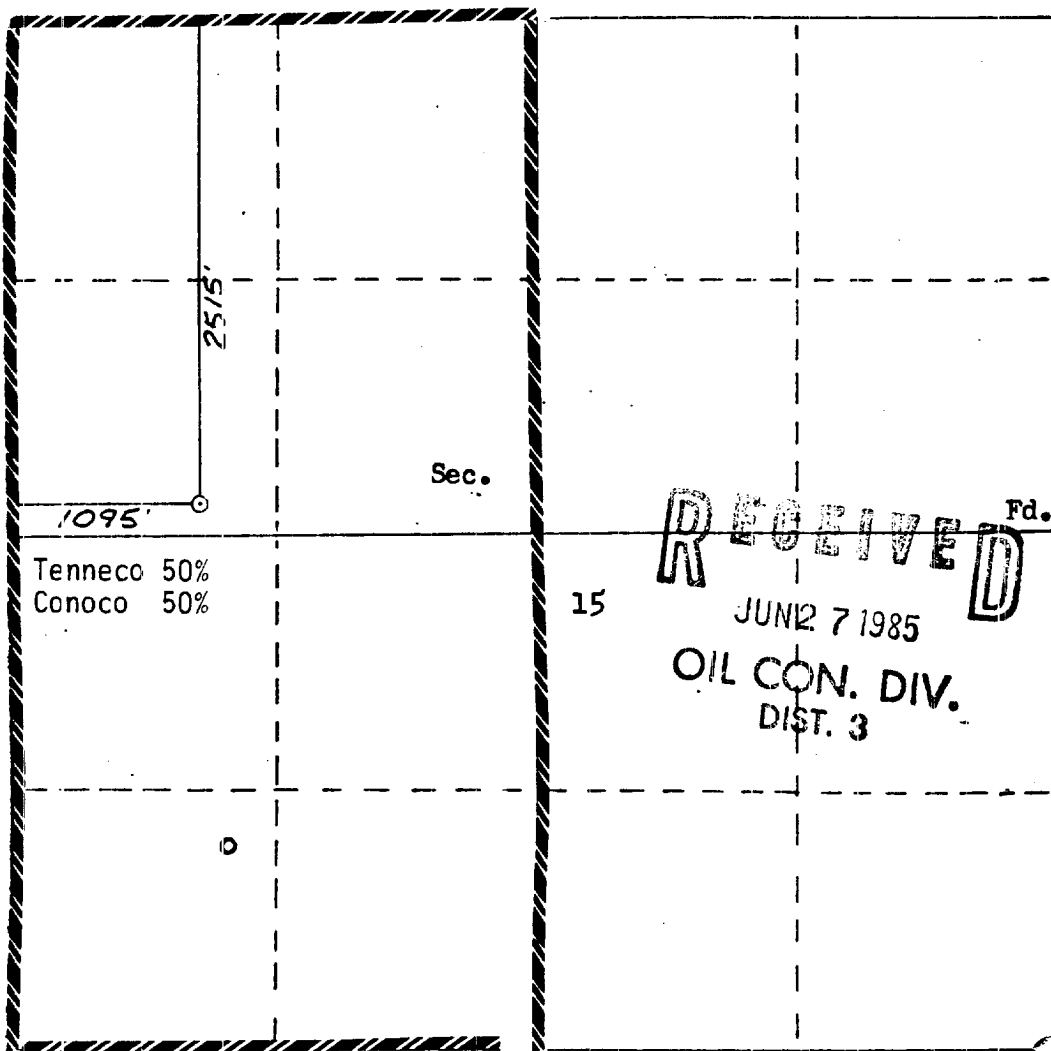
|                                                                                                                                |                                                |                        |                                              |                           |                                            |
|--------------------------------------------------------------------------------------------------------------------------------|------------------------------------------------|------------------------|----------------------------------------------|---------------------------|--------------------------------------------|
| Operator<br><b>TENNECO OIL COMPANY</b>                                                                                         |                                                |                        | Lease<br><b>MICHENER LS</b>                  |                           | Well No.<br><b>3M</b>                      |
| Unit Letter<br><b>E</b>                                                                                                        | Section<br><b>15</b>                           | Township<br><b>28N</b> | Range<br><b>9W</b>                           | County<br><b>San Juan</b> |                                            |
| Actual Footage Location of Well:<br><b>2515</b> feet from the <b>North</b> line and <b>1095</b> feet from the <b>West</b> line |                                                |                        |                                              |                           |                                            |
| Ground Level Elev.<br><b>6030</b>                                                                                              | Producing Formation<br><b>Mesaverde/Dakota</b> |                        | Pool<br><b>Blanco Mesaverde/Basin Dakota</b> |                           | Dedicated Acreage:<br><b>W-320 A</b> Acres |

1. Outline the acreage dedicated to the subject well by colored pencil or hachure marks on the plat below.
2. If more than one lease is dedicated to the well, outline each and identify the ownership thereof (both as to working interest and royalty).
3. If more than one lease of different ownership is dedicated to the well, have the interests of all owners been consolidated by communitization, unitization, force-pooling, etc?

☐ Yes ☒ No If answer is "yes," type of consolidation \_\_\_\_\_

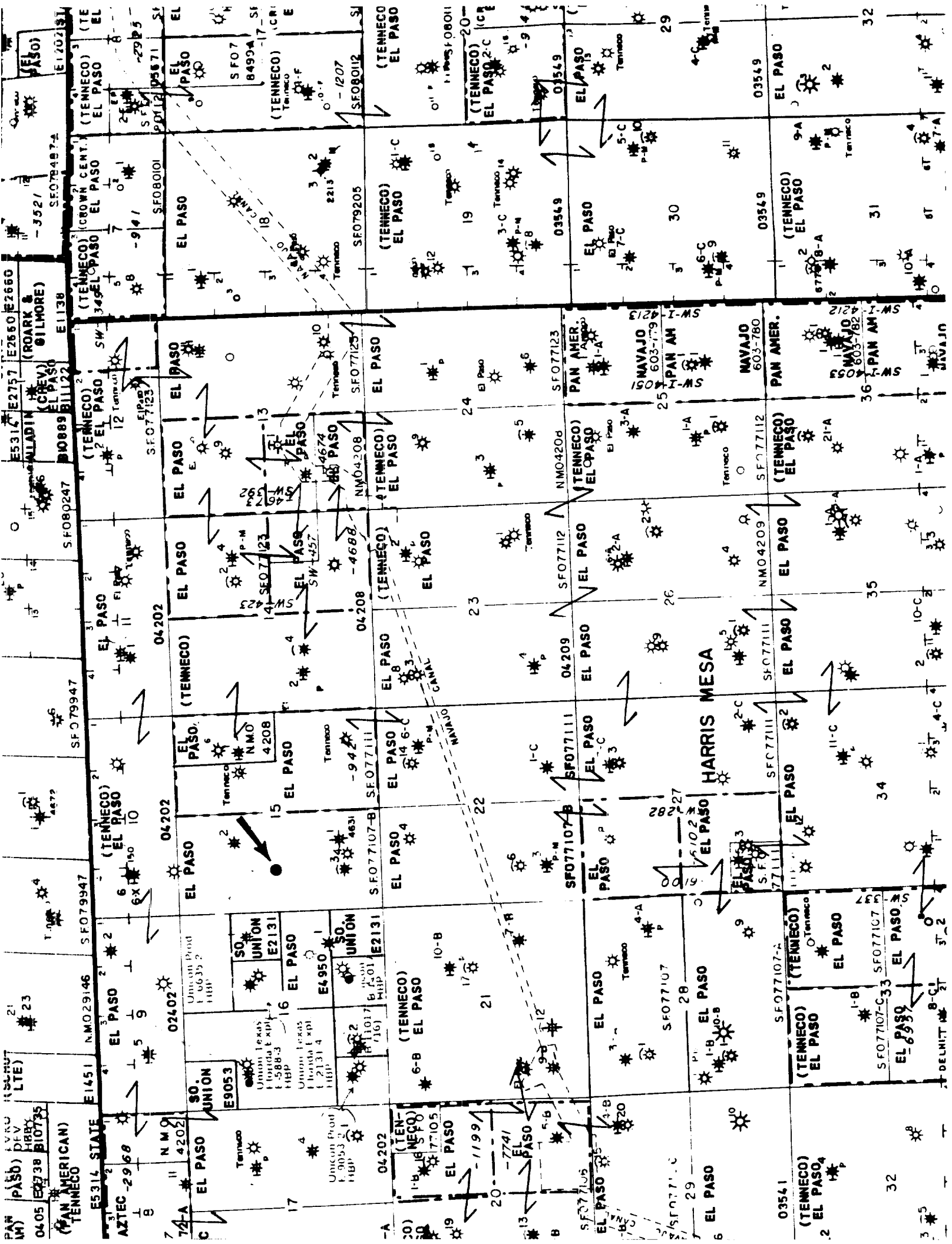
If answer is "no," list the owners and tract descriptions which have actually been consolidated. (Use reverse side of this form if necessary.) \_\_\_\_\_

No allowable will be assigned to the well until all interests have been consolidated (by communitization, unitization, forced-pooling, or otherwise) or until a non-standard unit, eliminating such interests, has been approved by the Commission.

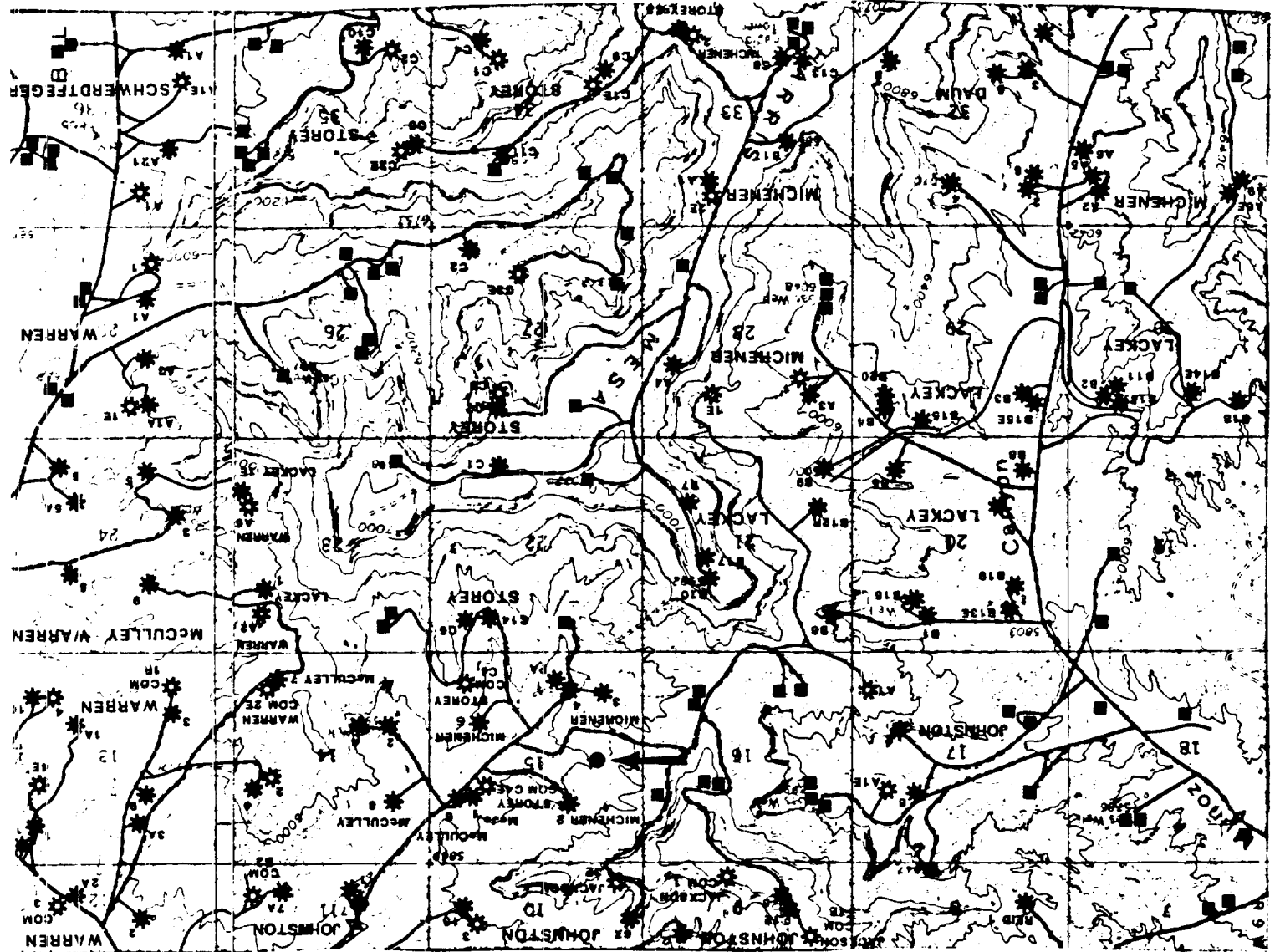


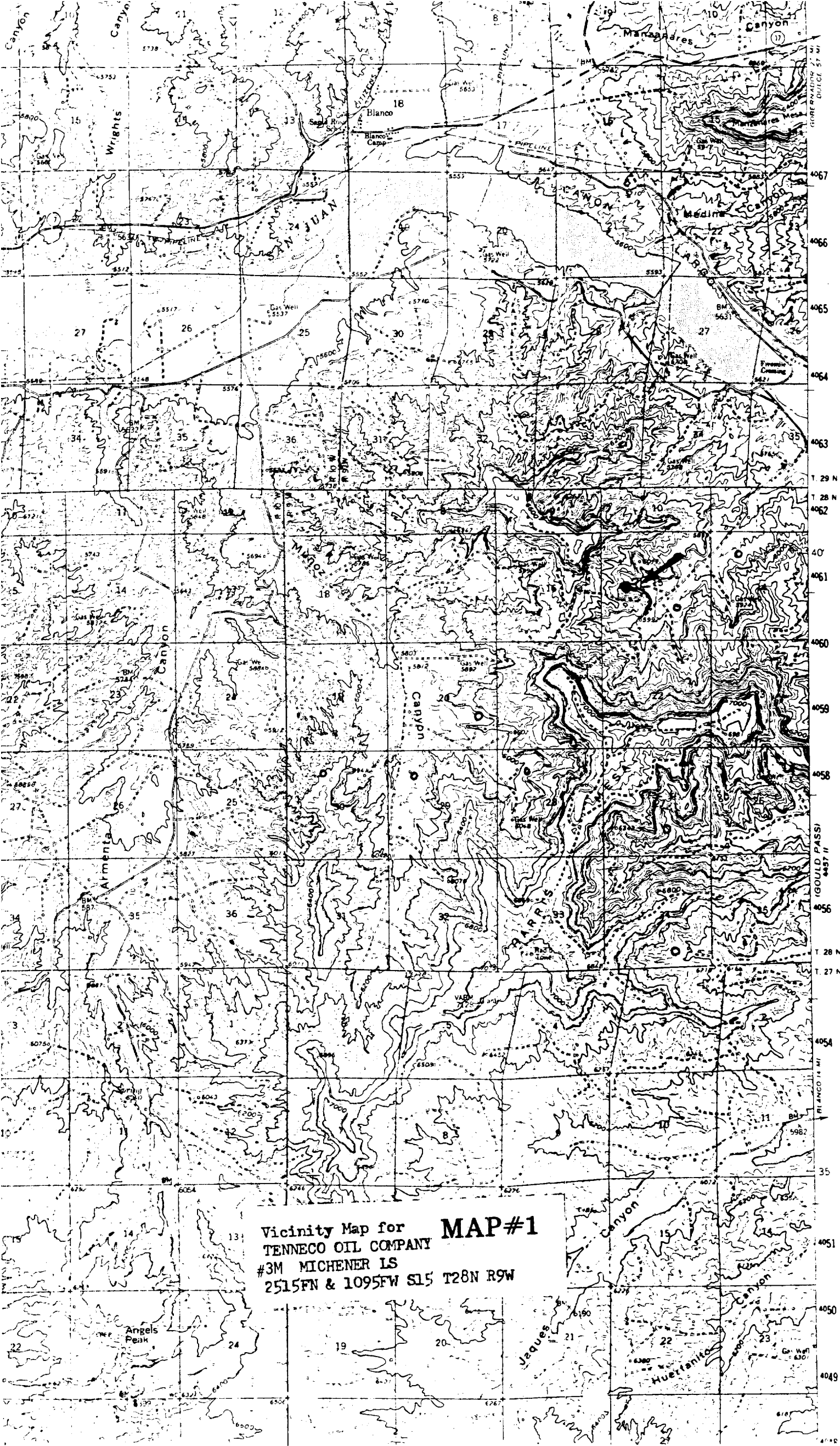
Scale: 1"=1000'

|                                                                                                                                                                                                                             |                        |
|-----------------------------------------------------------------------------------------------------------------------------------------------------------------------------------------------------------------------------|------------------------|
| <b>CERTIFICATION</b>                                                                                                                                                                                                        |                        |
| I hereby certify that the information contained herein is true and complete to the best of my knowledge and belief.                                                                                                         |                        |
| Name                                                                                                                                                                                                                        | Scott McKinney         |
| Position                                                                                                                                                                                                                    | Sr. Regulatory Analyst |
| Company                                                                                                                                                                                                                     | Tenneco Oil Co.        |
| Date                                                                                                                                                                                                                        | June 24, 1985          |
| I hereby certify that the well location shown on this plat was plotted from field notes of actual surveys made by me or under my supervision, and that the same is true and correct to the best of my knowledge and belief. |                        |
| Date Surveyed                                                                                                                                                                                                               | 6-24-85                |
| Registered Professional Engineer and Land Surveyor                                                                                                                                                                          | WILLIAM E. MAHNKE II   |
| Certificate No.                                                                                                                                                                                                             | 8466                   |



TENNECO OIL COMPANY  
 #3M MICHENER 1S  
 2515FN & 1095FW  
 S1S 128N R9W  
 San Juan Co., N.M.





Vicinity Map for **MAP#1**  
TENNECO OIL COMPANY  
#3M MICHENER 1S  
2515FN & 1095FW S15 T28N R9W