

6 BLM 1 File  
**UNITED STATES  
DEPARTMENT OF THE INTERIOR  
GEOLOGICAL SURVEY**

SUBMIT IN TRIPLICATE  
(Other instructions on  
reverse side)

Form approved  
Budget Bureau No. 42-R1425.

**APPLICATION FOR PERMIT TO DRILL, DEEPEN, OR PLUG BACK**

1a. TYPE OF WORK  
DRILL ☒ DEEPEN ☐ PLUG BACK ☐  
b. TYPE OF WELL  
OIL WELL ☒ GAS WELL ☐ OTHER ☐ SINGLE ZONE ☒ MULTIPLE ZONE ☐

2. NAME OF OPERATOR  
DUGAN PRODUCTION CORP.  
3. ADDRESS OF OPERATOR  
P O Box 208, Farmington, NM 87499

4. LOCATION OF WELL (Report location clearly and in accordance with any State requirements)  
At surface 330' FNL - 400' FEL  
At proposed prod. zone

**RECEIVED**  
AUG 12 1985

14. DISTANCE IN MILES AND DIRECTION FROM NEAREST TOWN OR POST OFFICE\*  
6 miles South of Farmington, NM

15. DISTANCE FROM PROPOSED\* LOCATION TO NEAREST PROPERTY OR LEASE LINE, FT.  
(Also to nearest drlg. unit line, if any) 330'

16. NO. OF ACRES IN LEASE 1424.64  
17. NO. OF ACRES ASSIGNED TO THIS WELL 80  
18. DISTANCE FROM PROPOSED LOCATION\* TO NEAREST WELL, DRILLING, COMPLETED, OR APPLIED FOR, ON THIS LEASE, FT.  
approx. 1700' to DPC's KR #1

19. PROPOSED DEPTH 5325'  
20. ROTARY OR CABLE TOOLS Rotary  
21. ELEVATIONS (Show whether DF, RT, GR, etc.) 6061' GL; 6073' RKB

22. APPROX. DATE WORK WILL START\* ASAP  
23. DRILLING OPERATIONS AUTHORIZED ARE  
SUBJECT TO COMPLIANCE WITH ATTACHED "GENERAL REQUIREMENTS"

SIZE OF HOLE	SIZE OF CASING	WEIGHT PER FOOT	SETTING DEPTH
12-1/4"	8-5/8"	24#	200'
7-7/8"	4-1/2"	10.5#	5325'

Plan to drill a 12-1/4" hole and set 200' of 8-5/8" OD, 24#, J-55 surface casing; then plan to drill a 7-7/8" hole to total depth with gel-water-mud program to test the Gallup formation. Plan to run IES and CDL logs. If deemed productive, will run 4-1/2", 10.5#, J-55 casing, selectively perforate, frac, clean out after frac, and complete well.

IN ABOVE SPACE DESCRIBE PROPOSED PROGRAM: If proposal is to deepen or plug back, give data on present productive zone and proposed new productive zone. If proposal is to drill or deepen directionally, give pertinent data on subsurface locations and measured and true vertical depths. Give blowout preventer program, if any.

24. SIGNED Sherman E. Dugan TITLE Geologist DATE 8-8-85  
(This space for Federal or State office use)

PERMIT NO. \_\_\_\_\_  
APPROVED BY \_\_\_\_\_  
CONDITIONS OF APPROVAL, IF ANY: \_\_\_\_\_

**RECEIVED**  
DEC 27 1985

**APPROVED  
AS AMENDED**

OIL CON. DIV.

\*See Instructions On Reverse Side

DEC 24 1985  
/s/ J. Stan McKee

M. MILLENBACH  
AREA MANAGER

W5C 2206  
OK  
EB

## OIL CONSERVATION DIVISION

STATE OF NEW MEXICO  
ENERGY AND MINERALS DEPARTMENTP. O. BOX 2088  
SANTA FE, NEW MEXICO 87501Form C-102  
Revised 10-1-78

All distances must be from the outer boundaries of the Section.

Operator Dugan Production Corporation		Lease K R		Well No. 14
Unit Letter A	Section 29	Township 27 North	Range 13 West	County San Juan
Actual Footage Location of Well: 330 feet from the North line and 400 feet from the East line				
Ground Level Elev. 6061	Producing Formation Gallup	Pool Gallegos Gallup Ext.	Dedicated Acreage: 80 Acres	

1. Outline the acreage dedicated to the subject well by colored pencil or hachure marks on the plat below.
2. If more than one lease is dedicated to the well, outline each and identify the ownership thereof (both as to working interest and royalty).
3. If more than one lease of different ownership is dedicated to the well, have the interests of all owners been consolidated by communitization, unitization, force-pooling, etc?

☐ Yes ☐ No If answer is "yes," type of consolidation \_\_\_\_\_

If answer is "no," list the owners and tract descriptions which have actually been consolidated. (Use reverse side of this form if necessary.) \_\_\_\_\_

No allowable will be assigned to the well until all interests have been consolidated (by communitization, unitization, forced-pooling, or otherwise) or until a non-standard unit, eliminating such interests, has been approved by the Division.

RECEIVED AUG 12 1985		Dugan Prod. NM 11580
SEC. 29		
RECEIVED DEC 8 1985 OIL CON. DIV. DIST. 3		

## CERTIFICATION

I hereby certify that the information contained herein is true and complete to the best of my knowledge and belief.

*Sherman E. Dugan*  
Name  
Sherman E. Dugan

Position  
Geologist

Company  
Dugan Production Corp.

Date  
8-7-85

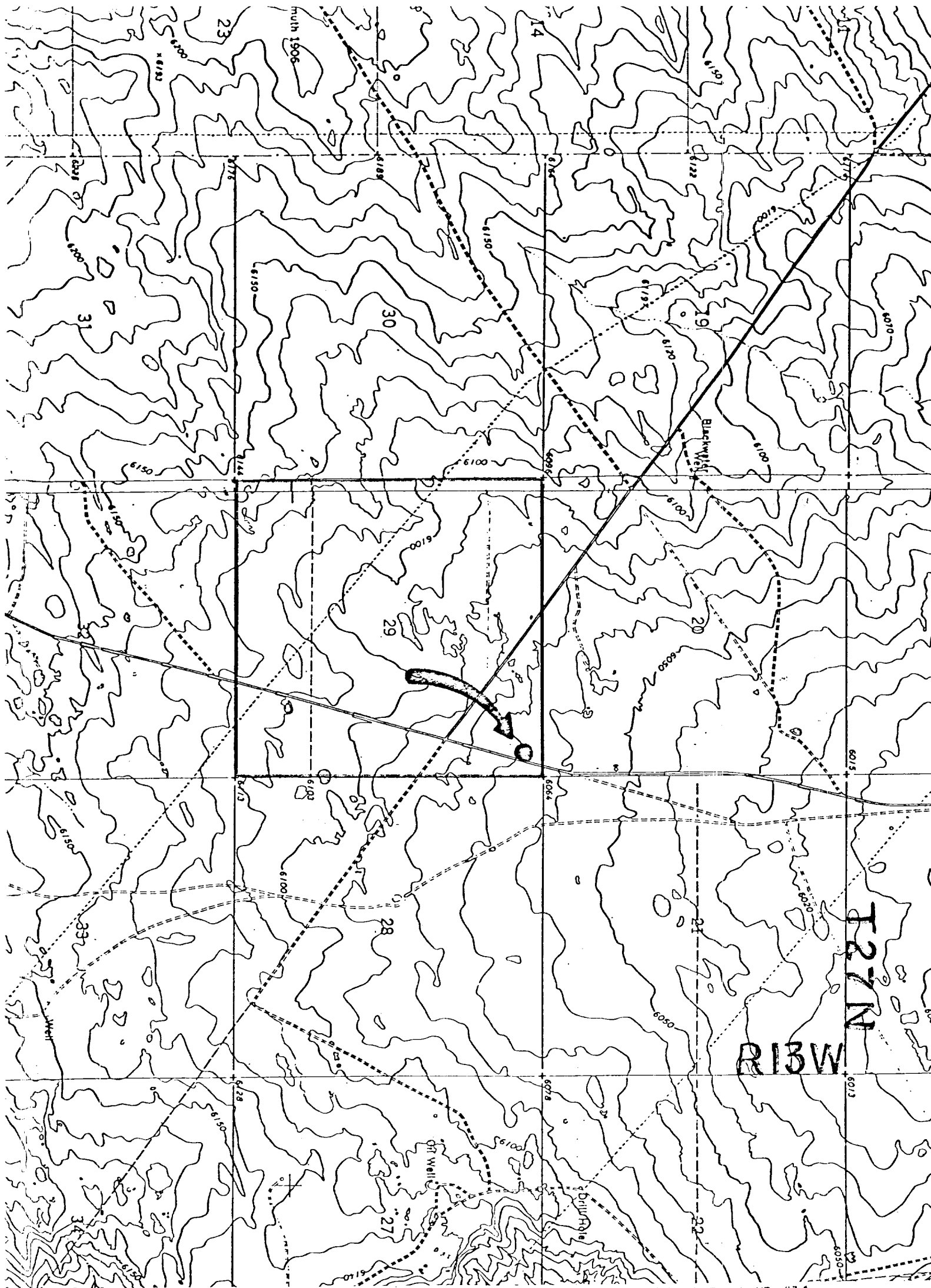
*Edgar L. Risenhoover*  
I have personally located the well location shown on this plat was plotted from field notes of actual surveys made by me or under my supervision, and that the same is true and correct to the best of my knowledge and belief.  
REGISTERED LAND SURVEYOR  
NEW MEXICO  
5979

Date Surveyed

July 29, 1985

Registered Professional Engineer  
and/or Land Surveyor

*Edgar L. Risenhoover*  
Certificate No. 5979



DUGAN PRODUCTION CORP. - KR #14 Exhibit E  
Existing Roads

Distance from nearest town or reference pt.  
6 miles South of Farmington, NM

Type of surface dirt

Conditions good

Other

DUGAN PRODUCTION CORP. - KR #14 Exhibit E  
Planned Access Road(s)

Width Maximum grades

Drainage design

Cuts & Fills

Surfacing material

Turnouts

Culverts

Gates

Cattleguards

Fence cuts

NO ACCESS ROAD  
REQUIRED