

6 BLM 1 File 1 BIA
UNITED STATES
DEPARTMENT OF THE INTERIOR
GEOLOGICAL SURVEYSUBMIT IN TRIPLICATE
(Other instructions on
reverse side)Form approved.
Budget Bureau No. 42-R1425.

APPLICATION FOR PERMIT TO DRILL, DEEPEN, OR PLUG BACK

1a. TYPE OF WORK

DRILL ☒DEEPEN ☐PLUG BACK ☐

b. TYPE OF WELL

OIL
WELL ☐GAS
WELL ☒

OTHER

SINGLE
ZONE ☒MULTIPLE
ZONE ☐

2. NAME OF OPERATOR

DUGAN PRODUCTION CORP.

3. ADDRESS OF OPERATOR

P O Box 208, Farmington, NM 87499

4. LOCATION OF WELL (Report location clearly and in accordance with any State requirements.)*

At surface
790' FSL - 1850' FWL

At proposed prod. zone

14. DISTANCE IN MILES AND DIRECTION FROM NEAREST TOWN OR POST OFFICE

10 miles south of Farmington, NM

15. DISTANCE FROM PROPOSED*

LOCATION TO NEAREST

PROPERTY OR LEASE LINE, FT.

(Also to nearest drlg. unit line, if any)

790'

18. DISTANCE FROM PROPOSED LOCATION*

TO NEAREST WELL, DRILLING, COMPLETED

OR APPLIED FOR, ON THIS LEASE, FT.

approx. 3000'

NW DPC's Hugh
Lake #2

16. NO. OF ACRES IN LEASE

160

19. PROPOSED DEPTH

1330'

17. NO. OF ACRES ASSIGNED

TO THIS WELL

160

20. ROTARY OR CABLE TOOLS

Rotary

21. ELEVATIONS (Show whether DF, RT, GR, etc.)

5795' GL

DRILLING OPERATIONS AUTHORIZED ARE
SUBJECT TO COMPLIANCE WITH ATTACHED

22. APPROX. DATE WORK WILL START*

ASAP

23. "GENERAL REQUIREMENTS"
PROPOSED CASING AND CEMENTING PROGRAM
This action is subject to technical and
procedural review pursuant to 43 CFR 3165.3
and appeal pursuant to 43 CFR 3165.4.

SIZE OF HOLE	SIZE OF CASING	WEIGHT PER FOOT	SETTING DEPTH	
8-3/4"	7"	20#	90'	41 cf circ. to surface
5-1/8"	2-7/8"	6.4#	1330'	196 cf circ. to surface

Plan to drill with as little mud as possible, using the slim-hole technique to test the Pictured Cliffs formation. Plan to run IES log and if the well appears productive, will set 2-7/8" casing, cemented to surface. Will selectively perforate, possibly frac and clean out after frac.

GAS IS NOT DEDICATED.

JAN 28 1986
OIL CON. DIV.
DIST. 3

IN ABOVE SPACE DESCRIBE PROPOSED PROGRAM: If proposal is to deepen or plug back, give data on present productive zone and proposed new productive zone. If proposal is to drill or deepen directionally, give pertinent data on subsurface locations and measured and true vertical depths. Give blowout preventer program, if any.

24. SIGNED Sherman E. Dugan TITLE Geologist DATE 9-20-85
(This space for Federal or State office use)

PERMIT NO. APPROVAL DATE

APPROVED BY TITLE DATE

CONDITIONS OF APPROVAL, IF ANY:

*See Instructions On Reverse Side

NMCCC

/s/ J. Stan McKee

OIL CONSERVATION DIVISION

STATE OF NEW MEXICO
ENERGY AND MINERALS DEPARTMENTP. O. BOX 2088
SANTA FE, NEW MEXICO 87501Form C-102
Revised 10-1-78

All distances must be from the outer boundaries of the Section.

Operator Dugan Production Corporation			Lease Hesperus		Well No. 1
Unit Letter N	Section 20	Township 27 North	Range 12 West	County San Juan	
Actual Footage Location of Wells: 790 feet from the South line and 1850 feet from the West line					
Ground Level Elev. 5795	Producing Formation Pictured Cliffs		Pool South Hesperus Fm Ext Undesignated Pictured Cliffs		Dedicated Acreage: 160 Acres

1. Outline the acreage dedicated to the subject well by colored pencil or hachure marks on the plat below.
2. If more than one lease is dedicated to the well, outline each and identify the ownership thereof (both as to working interest and royalty).
3. If more than one lease of different ownership is dedicated to the well, have the interests of all owners been consolidated by communitization, unitization, force-pooling, etc?

☐ Yes ☐ No If answer is "yes," type of consolidation _____

If answer is "no," list the owners and tract descriptions which have actually been consolidated. (Use reverse side of this form if necessary.) _____

No allowable will be assigned to the well until all interests have been consolidated (by communitization, unitization, forced-pooling, or otherwise) or until a non-standard unit, eliminating such interests, has been approved by the Division.

RECEIVED

JUN 10 1985

BUREAU OF LAND MANAGEMENT
FARMINGTON RESOURCE AREA

SEC 20

JUN 28 1986

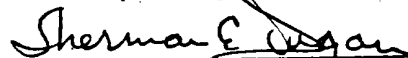
LOCAL DIV. 1
DIST. 3Dugan Prod.
N00-C-1420-5704

1850

790'

CERTIFICATION

I hereby certify that the information contained herein is true and complete to the best of my knowledge and belief.



Name

Sherman E. Dugan

Position

Geologist

Company

Dugan Production Corp.

Date

9-20-85

I hereby certify that the location shown on this plat was obtained from field notes of actual surveys made by me or under my supervision and that the same is true and correct to the best of my knowledge and belief.

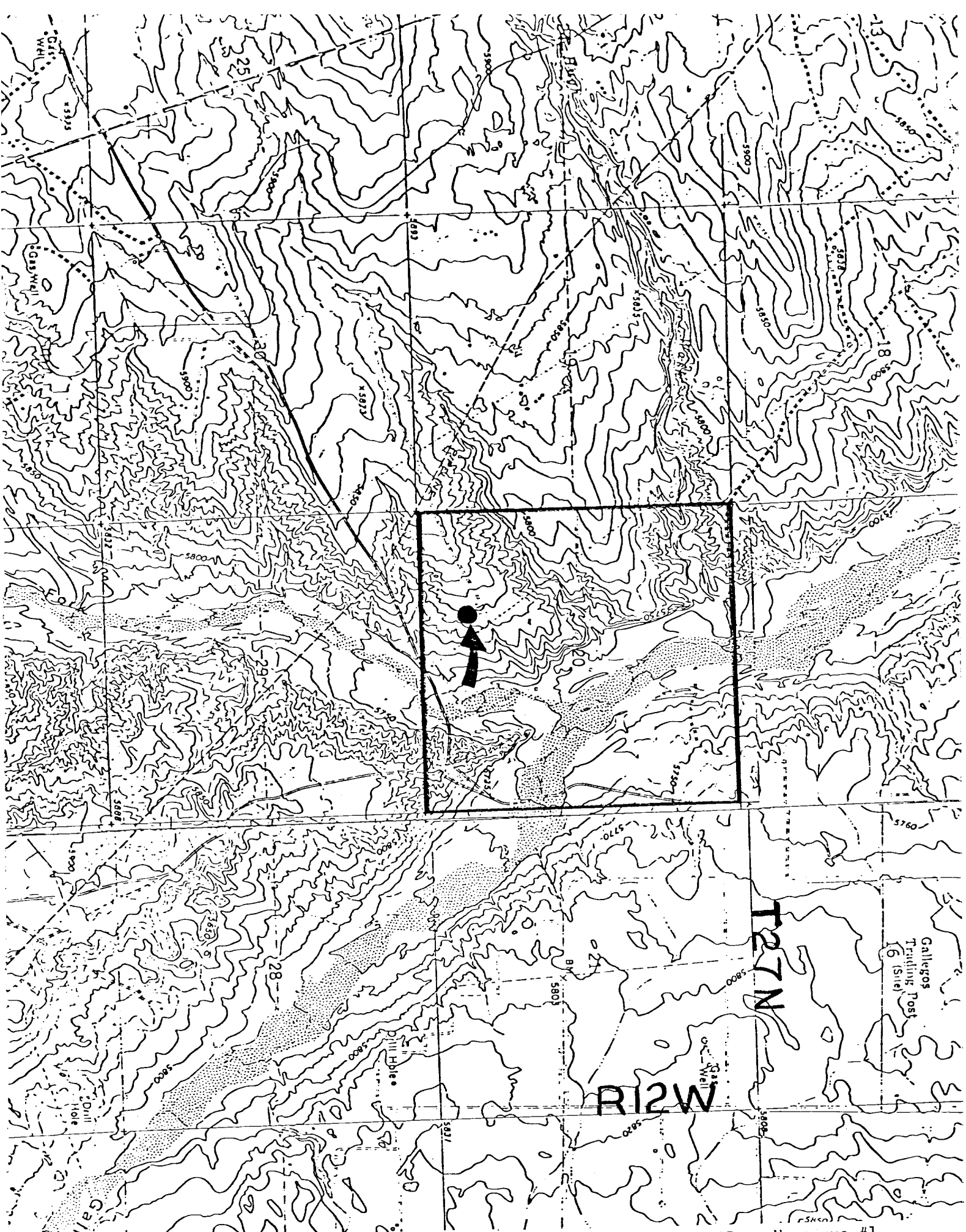
Date Surveyed

August 23, 1985

Registered Professional Engineer
and/or Land Surveyor

Certificate No. 5979

Edgar L. Risenhoover, L.S.



DUGAN PRODUCTION CORP. - Hesperus #1
Existing Roads Exhibit E

Distance from nearest town or reference pt.
10 miles south of Farmington, NM

Type of surface dirt

Conditions good

Other _____

DUGAN PRODUCTION CORP. - Hesperus #1
Planned Access Road(s) Exhibit E

Width 20' Maximum grades 2%

Drainage design _____

Cuts & Fills _____

Surfacing material _____

Plan to utilize existing
2-track and construct approx.
200' access road.

Access road(s) do/do not cross Fed/Ind land.