

UNITED STATES
DEPARTMENT OF THE INTERIOR
BUREAU OF LAND MANAGEMENT

20-045-36732

APPLICATION FOR PERMIT TO DRILL, DEEPEN, OR PLUG BACK

1a. TYPE OF WORK
DRILL ☒ DEEPEN ☐ PLUG BACK ☐

b. TYPE OF WELL
OIL WELL ☐ GAS WELL ☒ OTHER ☐ SINGLE ZONE ☒ MULTIPLE ZONE ☐

2. NAME OF OPERATOR
ROMO Corporation

3. ADDRESS OF OPERATOR
P.O. Box 1785, Farmington, New Mexico 87499

4. LOCATION OF WELL (Report location clearly and in accordance with any State requirements.)
At surface 1810' FNL and 1520' FWL
At proposed prod. zone 1910 same as above 1303
DEC 13 1985

14. DISTANCE IN MILES AND DIRECTION FROM NEAREST TOWN OR POST OFFICE*
15 Miles south of Blanco, N.M.
BUREAU OF LAND MANAGEMENT
FARMINGTON RESOURCE AREA

15. DISTANCE FROM PROPOSED*
LOCATION TO NEAREST
PROPERTY OR LEASE LINE, FT.
(Also to nearest drig. unit line, if any) 1167'

16. NO. OF ACRES IN LEASE
322.4

17. NO. OF ACRES ASSIGNED
TO THIS WELL 153.75 160.60

19. DISTANCE FROM PROPOSED LOCATION*
TO NEAREST WELL, DRILLING, COMPLETED,
OR APPLIED FOR, ON THIS LEASE, FT. 848'

19. PROPOSED DEPTH
2080'

20. ROTARY OR CABLE TOOLS
Rotary

21. ELEVATIONS (Show whether DF, RT, GR, etc.)
6066 6057 GR

DRILLING OPERATIONS AUTHORIZED ARE
SUBJECT TO COMPLIANCE WITH ATTACHED
"GENERAL REQUIREMENTS" AND CEMENTING PROGRAM

22. APPROX. DATE WORK WILL START*
December 30, 1985

This action is subject to technical and
procedural review pursuant to 43 CFR 3165.3
and appeal pursuant to 43 CFR 3165.4.

SIZE OF HOLE	SIZE OF CASING	WEIGHT PER FOOT	SETTING DEPTH	
9 7/8"	7 5/8" H-40	24.0#	± 300'	132 cf Cl. B 2% CaCl Circul.
6 3/4"	4 1/2" J-55	9.5#	± 2100' 2080'	Circulated (see below)

Cement long string with approximately 289 cu/ft of 65-35 pozmix with 12% Gel, 65# of Flocele and 2% CaCl₂ followed by approximately 90 cu/ft of class "B" cement with 2% CaCl₂, 2% Gel and 17# of Flocele.

It is request that this well be approved for drilling as shown on the above described program. This well will be perforated and fractured in the Pictured Cliffs formation and cleaned up. We will run approximately 2000' of 1 1/4" IJ tubing in the well and nipple down the well head. The well will be tested and connected to a gathering system (see attachment). The gas from this well has previously been dedicated to a transporter.

We also desire to connect this well to an existing pipeline on the west end of proposed pad according to the attached well tie and cut away plats. This well line does not cross a lease line and is on the proposed well pad. The pipe will be installed to API pipeline code, will be coated, wrapped and hydro-statically tested to 1000 PSIG.

23. ADVISE STATE DESCRIBE PROPOSED PROGRAM: If proposal is to deepen or plug back, give data on present productive zone and proposed new productive zone. If proposal is to drill or deepen directionally, give pertinent data on subsurface locations and measured and true vertical depths. Give blowout preventer program, if any.

24. SIGNED *[Signature]* TITLE President

DATE 12/12/85

(This space for Federal or State office use)

PERMIT NO.

APPROVAL DATE

MAY 19 1986

APPROVED BY
CONDITIONS OF APPROVAL, IF ANY:

TITLE

OIL CON. DIV. DATE
DIST. 0

NMOCC

*See Instructions On Reverse Side

Title 18 U.S.C. Section 1001, makes it a crime for any person knowingly and willfully to make to any department or agency of the United States any false, fictitious or fraudulent statements or representations as to any matter within its jurisdiction.

NEW MEXICO OIL CONSERVATION COMMISSION
WELL LOCATION AND ACREAGE DEDICATION PLAT

Form C-102
Supersedes C-128
Effective 1-1-83

All distances must be from the outer boundaries of the Section.

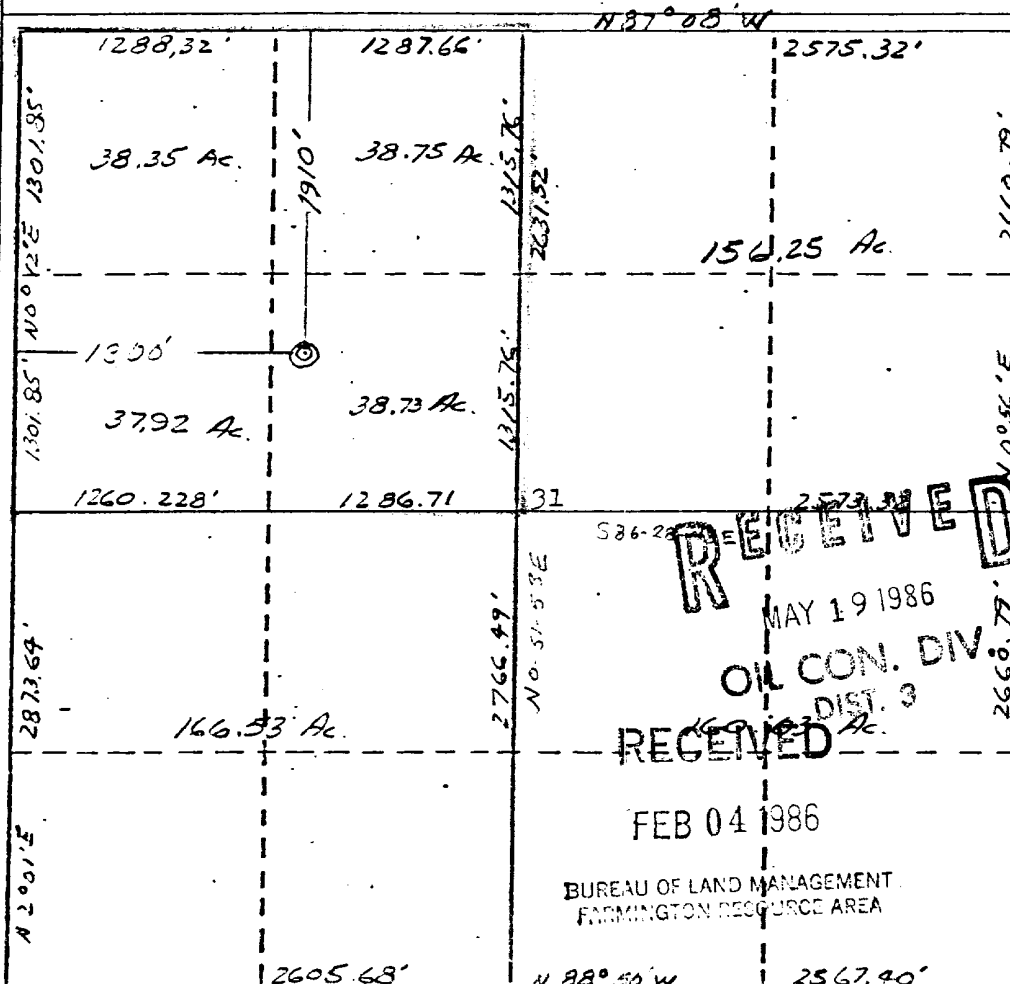
Operator ROMO CORPORATION		Lease NAVAJO INDIAN "C"		Well No. 1 R
Unit Letter F	Section 31	Township 27 NORTH	Range 8 WEST	County SAN JUAN
Actual Footage Location of Well:				
1910 feet from the NORTH line and		1300 feet from the WEST line		
Ground Level Elev. 6066	Producing Formation Pictured Cliffs	Pool South Blanco	Dedicated Acreage: NW 1/4 153.75 160.60 Acres	

1. Outline the acreage dedicated to the subject well by colored pencil or hachure marks on the plat below.
2. If more than one lease is dedicated to the well, outline each and identify the ownership thereof (both as to working interest and royalty).
3. If more than one lease of different ownership is dedicated to the well, have the interests of all owners been consolidated by communitization, unitization, force-pooling, etc?

☐ Yes ☐ No If answer is "yes," type of consolidation _____

If answer is "no," list the owners and tract descriptions which have actually been consolidated. (Use reverse side of this form if necessary.) _____

No allowable will be assigned to the well until all interests have been consolidated (by communitization, unitization, forced-pooling, or otherwise) or until a non-standard unit, eliminating such interests, has been approved by the Commission.



CERTIFICATION

I hereby certify that the information contained herein is true and complete to the best of my knowledge and belief.

Kenneth E. Roddy

Name
Kenneth E. Roddy

Position
President

Company
Romo Corporation

Date
January 6, 1986

I hereby certify that the well location shown on this plat was plotted from field notes of actual surveys made by me or under my supervision, and that the same is true and correct to the best of my knowledge and belief.

Date Surveyed
27 December 1985

Registered Professional Engineer
and/or Land Surveyor

James P. Lease
James P. Lease

Certificate No.
1463

