



**LTR**



**Job separation sheet**

\_\_\_\_\_

\_\_\_\_\_

\_\_\_\_\_

NO. OF COPIES RECEIVED	
DISTRIBUTION	
SANTA FE	
FILE	
U.S.G.S.	
LAND OFFICE	
OPERATOR	

5A. Indicate Type of Lease
STATE <input checked="" type="checkbox"/> FILE <input type="checkbox"/>
5. State Oil & Gas Lease No.
E-6635

APPLICATION FOR PERMIT TO DRILL, DEEPEN, OR PLUG BACK

1a. Type of Work	7. Unit Agreement Name		
b. Type of Well OIL WELL <input type="checkbox"/> GAS WELL <input checked="" type="checkbox"/> OTHER <input type="checkbox"/> DRILL <input checked="" type="checkbox"/> DEEPEN <input type="checkbox"/> PLUG BACK <input type="checkbox"/>	N/A		
2. Name of Operator	8. Farm or Lease Name		
Union Texas Petroleum Corporation	State Com		
3. Address of Operator	9. Well No.		
375 US Highway 64, Farmington, New Mexico 87499	1A		
4. Location of Well UNIT LETTER A LOCATED 1028 FEET FROM THE North LINE AND 1120 FEET FROM THE East LINE OF SEC. 16 TWP. 28 RGE. 9 NMPM	10. Field and Pool, or Wildcat		
	Blanco MV, Basin Dakota		
	12. County		
	San Juan		
19. Proposed Depth	19A. Formation	20. Rotary or C.T.	
7550' KB	Dakota	Rotary	
21. Elevations (Show whether DF, RT, etc.)	21A. Kind & Status Plug. Bond	21B. Drilling Contractor	22. Approx. Date Work will start
6587' Ungraded G.L.	Blanket Surety	Not selected	August 1, 1986

23.

PROPOSED CASING AND CEMENT PROGRAM

SIZE OF HOLE	SIZE OF CASING	WEIGHT PER FOOT	SETTING DEPTH	SACKS OF CEMENT	EST. TOP
12-1/4	8-5/8	24	300'	210	surface
7-7/8	4-1/2	10.5	7550'	1270	surface
			stage tool @ 4350'		

Union Texas Petroleum desires to drill a 12-1/4" hole to +300' and set 8-5/8", 24#, K-55 ST&C casing to +300', cementing to surface with 210 5x Class "B" with 2% CaCl<sub>2</sub>. Test casing and BOP to 1000 psi. Drill 7-7/8" hole to 7550' KB. Log well with I.E.S., F.D.C.-C.N.L. from TD - surface casing. If commercial production is indicated, run 4-1/2", 10.5#, K-55 ST&C to +7550' KB. Cement first stage with 700 sx 50/50 Poz containing 4% gel, 6-1/4" gilsonite/sk and 10# salt/sk. Open stage tool. Circulate. Cement second stage to surface with 470 sx 65/35 Poz with 12% gel and 12-1/4# gilsonite/sk, followed by 100 sx Class "B" with 2% CaCl<sub>2</sub>. Perforate and frac the Mesaverde and Dakota. Run 2 strings of tubing, separating zones. Connect to UTP gathering system in unit G-Section 16-T28N-R9W.

APPROVAL EXPIRES 1-8-87  
UNLESS DRILLING IS COMMENCED.  
SPUD NOTICE MUST BE SUBMITTED  
WITHIN 10 DAYS.

RECEIVED  
JUL 08 1986  
OIL CON. DIV.  
DIST. 3

IN ABOVE SPACE DESCRIBE PROPOSED PROGRAM: IF PROPOSAL IS TO DEEPEN OR PLUG BACK, GIVE DATA ON PRESENT PRODUCTION ZONE AND PROPOSED NEW PRODUCTION ZONE. GIVE BLOWOUT PREVENTER PROGRAM, IF ANY.

I hereby certify that the information above is true and complete to the best of my knowledge and belief.

Signed Robert C. Frank Title Permit Coordinator Date June 30, 1986

(This space for State Use)

DEPUTY OIL & GAS INSPECTOR, DIST. #3

JUL 08 1986

APPROVED ORIGINAL SIGNED BY ERNIE BUSCH TITLE \_\_\_\_\_ DATE \_\_\_\_\_

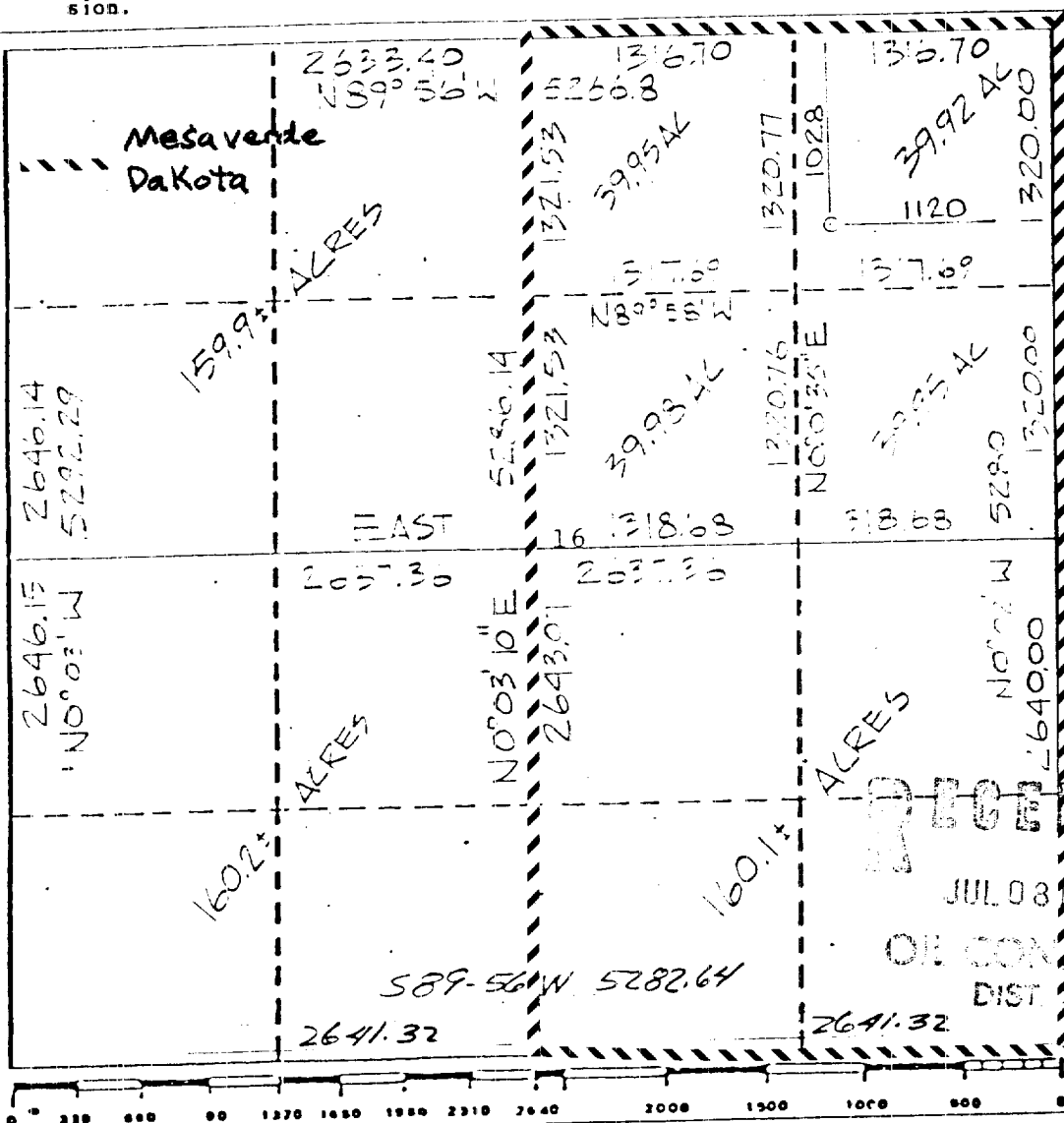
CONDITIONS OF APPROVAL, IF ANY:

Form C-102  
Supersedes C-128  
Effective 1-1-65

All distances must be from the outer boundaries of the Section.									
Operator UNION TEXAS PETROLEUM CORPORATION				Lease STATE COMM			Well No. 1-A		
Unit Letter A		Section 16		Township 28 NORTH		Range 9 WEST		County SAN JUAN	
Actual Footage Location of Wells									
1028		feet from the		NORTH		line and		1120	
						feet from the		EAST	
Ground Level Elev. 6587		Producing Formation BLANCO/BASIN			Pool MESAVERDE / DAKOTA			Dedicated Acreages 319.90 320 Acres	

- ☒ Yes    ☐ No    If answer is "yes," type of consolidation Communitization

No allowable will be assigned to the well until all interests have been consolidated (by communitization, unitization, forced-pooling, or otherwise) or until a non-standard unit, eliminating such interests, has been approved by the Commission.



I hereby certify that the information contained herein is true and complete to the best of my knowledge and belief.

Robert C. Zank

**Notes**

Robert C. Frank

Position

Permit Coordinator

Company

Union Texas Petroleum

Date \_\_\_\_\_

June 27, 1986

I hereby certify that the well location shown on this plot was plotted from field notes of actual surveys made by me or under my supervision, and that the same is true and correct to the best of my knowledge and belief.

**D**

June 11,

Registered Professional Engineer  
and/or Land Surveyor

George R. Tompkins

Certificate No. 7259