

UNITED STATES
DEPARTMENT OF THE INTERIOR
BUREAU OF LAND MANAGEMENT

30-045-2 1763

APPLICATION FOR PERMIT TO DRILL, DEEPEN, OR PLUG BACK

1a. TYPE OF WORK
 DRILL DEEPEN PLUG BACK

b. TYPE OF WELL
 OIL WELL GAS WELL OTHER SINGLE ZONE MULTIPLE ZONE

2. NAME OF OPERATOR
 Meridian Oil Inc.

3. ADDRESS OF OPERATOR
 PO Box 4289, Farmington, NM 87499

4. LOCATION OF WELL (Report location clearly and in accordance with any State requirements)
 At surface 790'N, 1150'E
 At proposed prod. zone

14. DISTANCE IN MILES AND DIRECTION FROM NEAREST TOWN OR POST OFFICE
 13 miles SE of Bloomfield, NM

15. DISTANCE FROM PROPOSED* LOCATION TO NEAREST PROPERTY OR LEASE LINE, FT. (Also to nearest drig. unit line, if any)
 790'

16. NO. OF ACRES IN LEASE
 160 Unit

17. NO. OF ACRES ASSIGNED TO THIS WELL
 160 ~~320.00~~

18. DISTANCE FROM PROPOSED* LOCATION TO NEAREST WELL, DRILLING, COMPLETED, OR APPLIED FOR, ON THIS LEASE, FT.
 370'

19. PROPOSED DEPTH
 4050'

20. ROTARY OR CABLE TOOLS
 Rotary

21. ELEVATIONS (Show whether DF, RT, GR, etc.)
 6592'GL

22. APPROX. DATE WORK WILL START*

5. LEASE DESIGNATION AND SERIAL NO.
 SF 080017

6. IF INDIAN, ALLOTTEE OR TRIBE NAME

7. UNIT AGREEMENT NAME
 Huerfano Unit

8. FARM OR LEASE NAME
 Huerfano Unit

9. WELL NO.
 286

10. FIELD AND POOL OR WILDCAT
 Undec. Mesa Verde

11. SEC., T., R., M., OR BLK. AND SURVEY OR AREA
 A Sec. 35, T-27-N, R-10-W NMPM

12. COUNTY OR PARISH
 San Juan

13. STATE
 NM

RECEIVED
 NOV 21 1986

DRILLING OPERATIONS AUTHORIZED ARE
 SUBJECT TO COMPLIANCE WITH ATTACHED
 "GENERAL REQUIREMENTS"

PROPOSED CASING AND CEMENTING PROGRAM

SIZE OF CASING	WEIGHT PER FOOT	SETTING DEPTH	QUANTITY OF CEMENT
12 1/4"	8 5/8"	24.0#	200'
7 7/8"	4 1/2"	10.5#	4050'
			177 cu.ft. circulated
			1461 cu.ft. circulated

1st stage - 286 cu.ft. to cover Mesa Verde
 2nd stage - 1175 cu.ft. to circulate surface

Selectively perforate and sand water fracture the Mesa Verde formation.

A 3000 psi WP and 6000 psi test double gate preventer equipped with blind and pipe rams will be used for blow out prevention on this well.

This gas is dedicated.

The N/2 of Section 35 is dedicated to this well.

RECEIVED

DEC 12 1986

OIL CON. DIV.

IN ABOVE SPACE DESCRIBE PROPOSED PROGRAM: If proposal is to deepen or plug back, give data on present productive zone and proposed new productive zone. If proposal is to drill or deepen directionally, give pertinent data on subsurface locations and measured and true vertical depths. Give blowout preventer program, if any.

24. [Signature] Drilling Clerk 11-20-86

(This space for Federal or State office use)

PERMIT NO. _____ APPROVAL DATE _____

APPROVED
 AS AMENDED

APPROVED BY _____ TITLE _____ DATE DEC 10 1986

CONDITIONS OF APPROVAL, IF ANY:

OK
 110

NMOCC

*See Instructions On Reverse Side

[Signature]
 AREA MANAGER

OIL CONSERVATION DIVISION

STATE OF NEW MEXICO
ENERGY AND MINERALS DEPARTMENT

P. O. BOX 2088
SANTA FE, NEW MEXICO 87501

Form C-102
Revised 10-1-78

All distances must be from the outer boundaries of the Section.

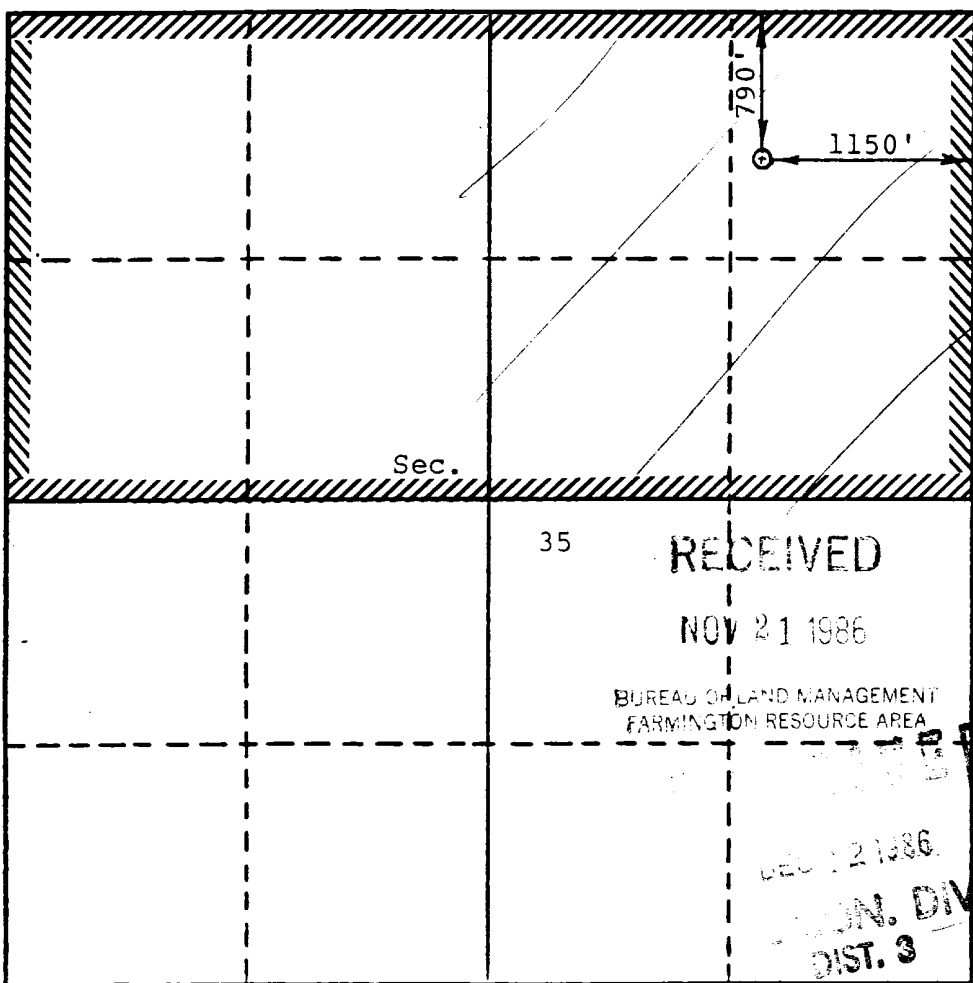
Operator MERIDIAN OIL INC.		Lease Huerfano Unit (SF 080017)		Well No. 286
Unit Letter A	Section 35	Township 27N	Range 10W	County San Juan
Actual Postage Location of Well: 790 feet from the North line and 1150 feet from the East line				
Ground Level Elev. 6592	Producing Formation Mesaverde	Pool Undesignated	Dedicated Acreage: 320/100 Acres	

1. Outline the acreage dedicated to the subject well by colored pencil or hachure marks on the plat below.
2. If more than one lease is dedicated to the well, outline each and identify the ownership thereof (both as to working interest and royalty).
3. If more than one lease of different ownership is dedicated to the well, have the interests of all owners been consolidated by communitization, unitization, force-pooling, etc?

Yes No If answer is "yes," type of consolidation Unitized

If answer is "no," list the owners and tract descriptions which have actually been consolidated. (Use reverse side of this form if necessary.) _____

No allowable will be assigned to the well until all interests have been consolidated (by communitization, unitization, forced-pooling, or otherwise) or until a non-standard unit, eliminating such interests, has been approved by the Division.



CERTIFICATION

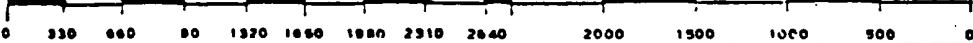
I hereby certify that the information contained herein is true and complete to the best of my knowledge and belief.

David M. Kelsey

Name Drilling Clerk
Position Meridian Oil Inc.
Company <i>11-20-86</i>
Date

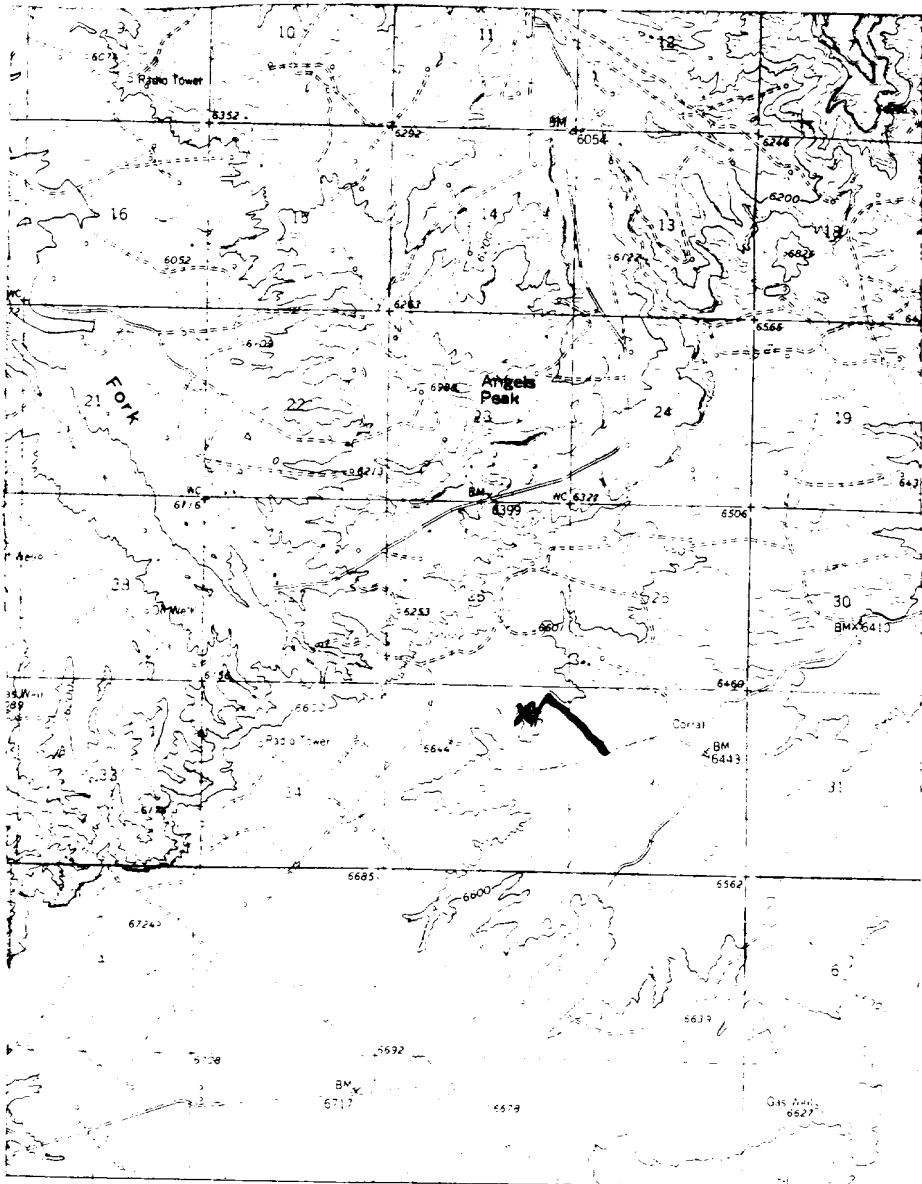
I hereby certify that the well location shown on this plat was plotted from field notes of actual surveys made by me or under my supervision, and that the same is true and correct to the best of my knowledge and belief.

Date Surveyed November 13, 1986
Registered Professional Engineer and/or Land Surveyor David M. Kelsey
Certificate No. 5855








Huertano Unit 206

NE 35-27-10



Map #2

LEGEND OF RIGHT-OF-WAYS

- EXISTING ROADS 
- EXISTING PIPELINES 
- EXISTING ROAD & PIPELINE 
- PROPOSED ROADS 
- PROPOSED PIPELINES 
- PROPOSED ROAD & PIPELINE 