

UNITED STATES
DEPARTMENT OF THE INTERIOR
BUREAU OF LAND MANAGEMENT

APPLICATION FOR PERMIT TO DRILL, DEEPEN, OR PLUG BACK

1a. TYPE OF WORK

DRILL ☒

DEEPEN ☐

PLUG BACK ☐

b. TYPE OF WELL

OIL
WELL ☒

GAS
WELL ☐

OTHER

SINGLE
ZONE ☒

MULTIPLE
ZONE ☐

2. NAME OF OPERATOR

Merrion Oil & Gas Corporation

3. ADDRESS OF OPERATOR

P. O. Box 840, Farmington, New Mexico 87499

4. LOCATION OF WELL (Report location clearly and in accordance with any State requirements.)

At surface 790' FSL and 1850' FEL
At proposed prod. zone 600' 2400'

Same

14. DISTANCE IN MILES AND DIRECTION FROM NEAREST TOWN OR POST OFFICE

Approximately 16 miles South of Farmington

RECEIVED
FEB 04 1986

15. DISTANCE FROM PROPOSED* LOCATION TO NEAREST PROPERTY OR LEASE LINE, FT. (Also to nearest drlg. unit line, if any)

790

16. NO. OF ACRES IN LEASE

913.25

17. NO. OF ACRES ASSIGNED TO THIS WELL

40

18. DISTANCE FROM PROPOSED LOCATION* TO NEAREST WELL, DRILLING, COMPLETED, OR APPLIED FOR, ON THIS LEASE, FT.

1200'

19. PROPOSED DEPTH

5310

20. ROTARY OR CABLE TOOLS

Rotary

21. ELEVATIONS (Show whether DF, RT, GR, etc.)

6073' GL 6073' KB

22. APPROX. DATE WORK WILL START*

February/1986

23. PROPOSED CASING AND CEMENTING PROGRAM

This action is subject to technical and procedural review pursuant to 43 CFR 3165.3 and appeal pursuant to 43 CFR 3165.4.

SIZE OF HOLE	SIZE OF CASING	WEIGHT PER FOOT	SETTING DEPTH	
12-1/4"	8-5/8", J-55	24 #/ft.	213' GR	175 sx Class B 3% CaCl2 (206.5)
7-7/8"	4-1/2", J-55	10.5 #/ft.	5310'	925 sx (as below)

Propose to drill 12-1/4" hole to approximately 213' and set approximately 200' of 8-5/8", 24 #/ft. surface casing with 175 sx Class B 3% CaCl2 (206.5 cu. ft.). Will drill 7-7/8" hole to TD and run open hole logs. If appears productive, will run 4-1/2", 10.5 #/ft, J-55 casing to 5310' KB and stage cement, 1st Stage with 225 sx Class H, 2% gel (275 cu. ft.) to cover Gallop interval from TD. Estimated top of cement 4350 ft. KB. Will set stage cement 4250' KB with estimated 600 sx Class B, 2% D-79 (1236 cu. ft.) followed by 100 sx Class H 2% gel (122 cu. ft.) to cover Mesaverde, Chacra, Pictured Cliff, Fruitland and Ojo Alamo. Estimated top of cement at surface. Cement volumes will be adjusted based on Caliper Log.

Will perforate and stimulate as necessary.

10" 900 series double ram preventers will be used in drilling.

Drilling fluid will be low solids, non-dispersed, low water loss mud using bentonite, starch, CMC and fresh water.

No unusual drilling problems are anticipated.

IN ABOVE SPACE DESCRIBE PROPOSED PROGRAM: If proposal is to deepen or plug back, give data on present productive zone and proposed new productive zone. If proposal is to drill or deepen directionally, give pertinent data on subsurface locations and measured and true vertical depths. Give blowout preventer program if any.

24.

SIGNED

TITLE Operations Manager

DATE 1/30/86

(This space for Federal or State office use)

APPROVED
AS AMENDED

PERMIT NO.

APPROVAL DATE

APPROVED BY

TITLE

DATE

CONDITIONS OF APPROVAL, IF ANY:

NMOCC

*See Instructions On Reverse Side

Title 18 U.S.C. Section 1001 makes it a crime for any person knowingly and willfully to make to any department or agency of the United States any false, fictitious or fraudulent statements or representations as to any matter within its jurisdiction.

30-045-26764

All distances must be from the outer boundaries of the Section.

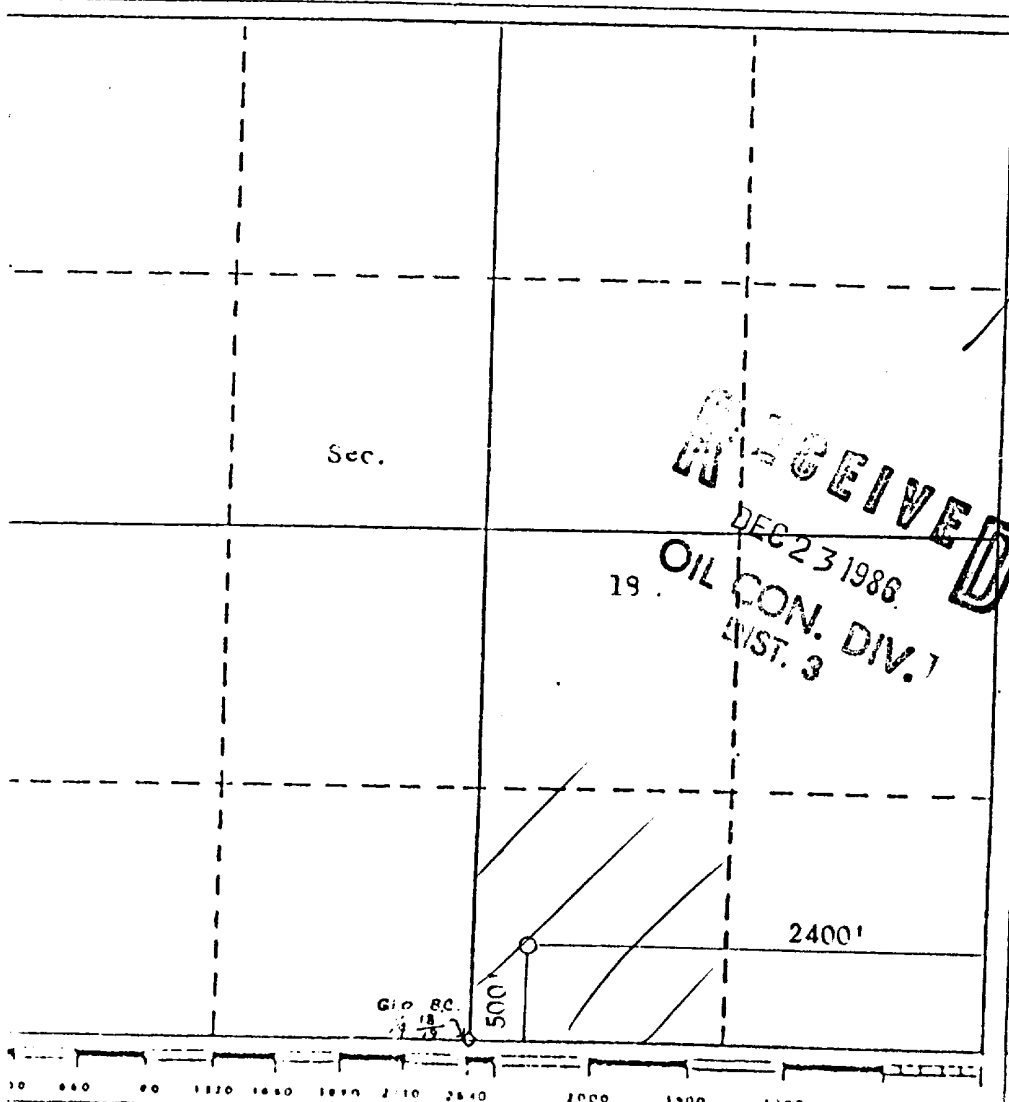
MERRION OIL & GAS CORP.			Thimble Lake			Well No. 1
Unit Letter 0	Section 18	Township 27 North	Range 13 West	County San Juan		
Actual Well Location of Well:						
1500 feet from the South line and		2400 feet from the East line				
Ground Level Elev. 6070'	Producing Formation Gallup	Pool Undes. Gallup	Dedicated Acreage 40 Acres			

1. Outline the acreage dedicated to the subject well by colored pencil or hatchure marks on the plat below.
2. If more than one lease is dedicated to the well, outline each and identify the ownership thereof (both as to working interest and royalty).
3. If more than one lease of different ownership is dedicated to the well, have the interests of all owners been consolidated by communitization, unitization, force-pooling, etc?

☐ Yes ☐ No If answer is "yes," type of consolidation _____

If answer is "no," list the owners and tract descriptions which have actually been consolidated. (Use reverse side of this form if necessary.)

No allowable will be assigned to the well until all interests have been consolidated (by communitization, unitization, forced-pooling, or otherwise) or until a non-standard unit, eliminating such interests, has been approved by the Divi.



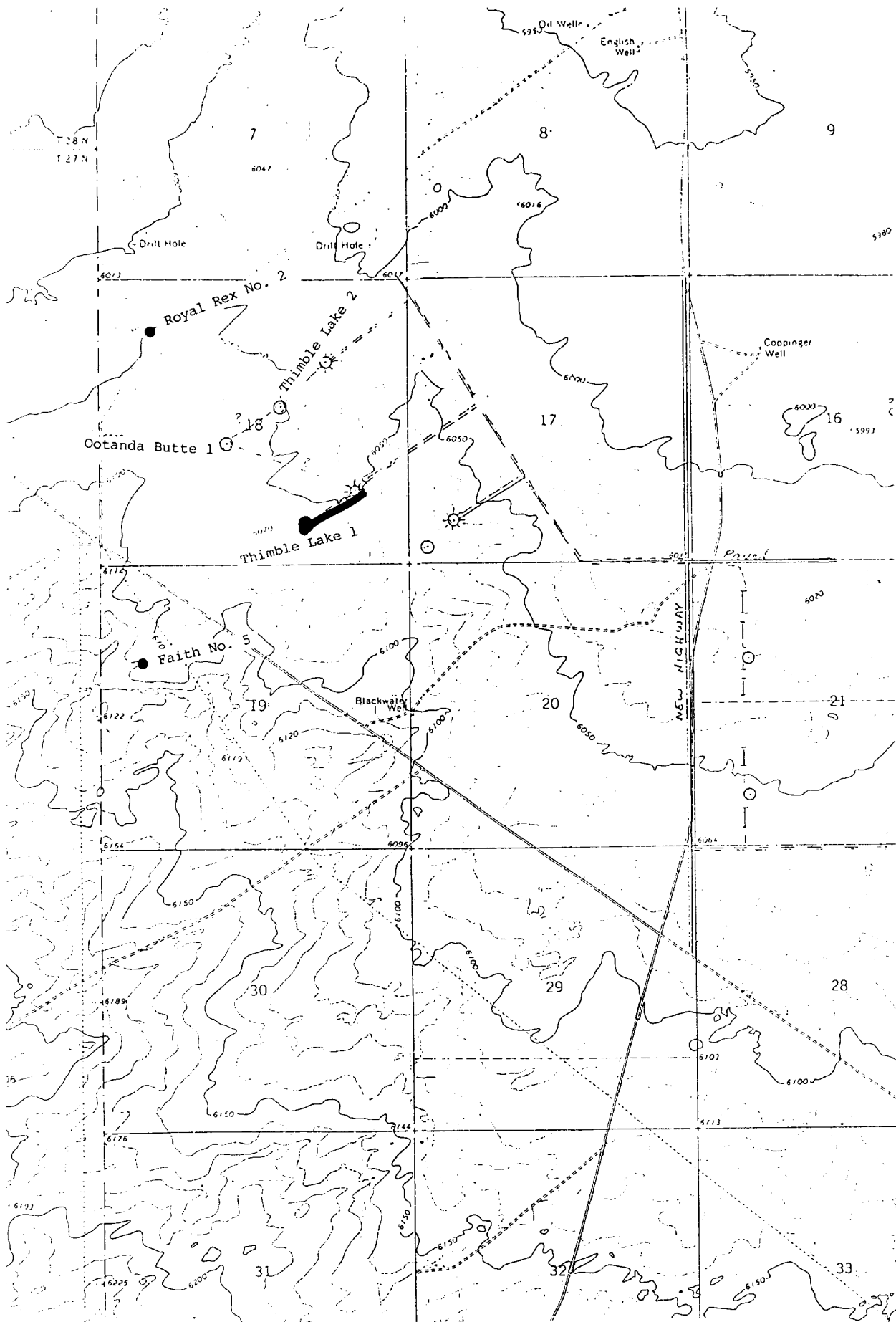
CERTIFICATION

I hereby certify that the information herein is true and complete to the best of my knowledge and belief.

Name Steve S. Dunn
Position Operations Manager
Company Merrion Oil & Gas Corporation
Date 2/25/86

I hereby certify that the well location shown on this plat was plotted from field notes of actual surveys made by me or under my supervision, and that the same is true and correct to the best of my knowledge and belief.

Date Surveyed Feb. 18, 1986
Registered Professional Land Surveyor
Certificate No. 8894



Vicinity Map for
 MERRION OIL & GAS CORP. #1 Thimble Lake
 790' FSL 1850' FEL Sec. 18-T27N-R13W
 SAN JUAN COUNTY, NEW MEXICO

New Road —



TONY ANAYA
GOVERNOR

STATE OF NEW MEXICO
ENERGY AND MINERALS DEPARTMENT
OIL CONSERVATION DIVISION

May 8, 1986

 50 YEARS



1935 - 1985

POST OFFICE BOX 2088
STATE LAND OFFICE BUILDING
SANTA FE, NEW MEXICO 87501
(505) 827-5800

Merrion Oil & Gas Corporation
P. O. Box 840
Farmington, New Mexico 87499

Attention: Steve S. Dunn

Administrative Order NSL-2264

Gentlemen:

Reference is made to your application for a non-standard location for your Thimble Lake No. 1 well to be located 500 feet from the South line and 2400 feet from the East line of Section 18, Township 27 North, Range 13 West, NMPM, Undesignated Gallup Pool, San Juan County, New Mexico. The SW/4 SE/4 of said Section 18 shall be dedicated to the well.

By authority granted me under the provisions of Rule 104 F(I), the above-described unorthodox location is hereby approved.

Sincerely,



R. L. STAMETS, DIRECTOR

RLS/DC/dr

cc: Oil Conservation Division - Aztec
Bureau of Land Management - Farmington

RECEIVED
MAY 12 1986
OIL CON. DIV.
DIST. 3



STATE OF NEW MEXICO
ENERGY AND MINERALS DEPARTMENT
OIL CONSERVATION DIVISION
AZTEC DISTRICT OFFICE

1000 RIO BRAZOS ROAD
AZTEC, NEW MEXICO 87410
(505) 334-6178

OIL CONSERVATION DIVISION
BOX 2088
SANTA FE, NEW MEXICO 87501

DATE 5-6-86

RE: Proposed MC _____
Proposed DHC _____
Proposed NSL X _____
Proposed SWD _____
Proposed WFX _____
Proposed PMX _____

Gentlemen:

I have examined the application dated 4-23-86
for the Merrica Oil & Gas Corp. Thimble Lake #1 0-18-27N-13W
Operator Lease and Well No. Unit, etc.

and my recommendations are as follows:

Approve

Yours truly,

Erin Busch



MERRION OIL & GAS CORPORATION

P. O. Box 840
FARMINGTON, NEW MEXICO 87499

April 3, 1986

State of New Mexico
Energy and Minerals Department
Oil Conservation Division
P. O. Box 2088
Santa Fe, New Mexico 87501

Re: Thimble Lake No. 1
Sec. 18, T27N, R13W
San Juan Co., New Mexico

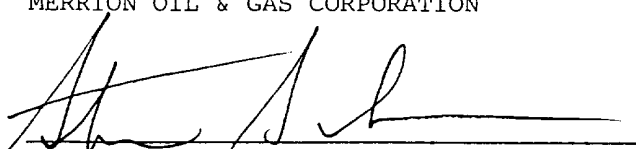
Dear Sir:

The above referred to location is for a well to be drilled to the Gallup Formation. This location is non-standard because of topography. This location has been chosen in order to avoid the proposed NAPI irrigation system. A Certified Letter has been sent to the offsetting operator advising them of this location. We hereby request administrative approval of this location for drilling.

Thank you for your assistance in this matter.

Yours truly,

MERRION OIL & GAS CORPORATION


Steve S. Dunn, Operations Manager

SSD/am

Enc.

cc: Frank Chavez

RECEIVED
APR 23 1986
OIL CON. DIV.
DIST. 3

All distances must be from the outer boundaries of the Section

Operator MERRION OIL & GAS CORP.			Lense Thimble Lake		Well No. 1
Unit Letter 0	Section 18	Township 27 North	Range 13 West	County San Juan	
Actual Postage Location of Well:					
500 feet from the South line and		2400 feet from the East line			
Ground Level Elev. 6079'	Producing Formation Gallup	Pool Undes. Gallup	Dedicated Acreage: 40 Acres		

1. Outline the acreage dedicated to the subject well by colored pencil or hatchure marks on the plat below.
2. If more than one lense is dedicated to the well, outline each and identify the ownership thereof (both as to working interest and royalty).
3. If more than one lense of different ownership is dedicated to the well, have the interests of all owners been consolidated by communitization, unitization, force-pooling, etc?

☐ Yes ☐ No If answer is "yes," type of consolidation _____

If answer is "no," list the owners and tract descriptions which have actually been consolidated. (Use reverse side of this form if necessary.)

No allowable will be assigned to the well until all interests have been consolidated (by communitization, unitization, forced-pooling, or otherwise) or until a non-standard unit, eliminating such interests, has been approved by the Divi-

Sec.		RECEIVED APR 23 1986 OIL CON. DIV. DIST. 3	
		2400'	
GLO BC. $\frac{1}{4}$ 18		500'	

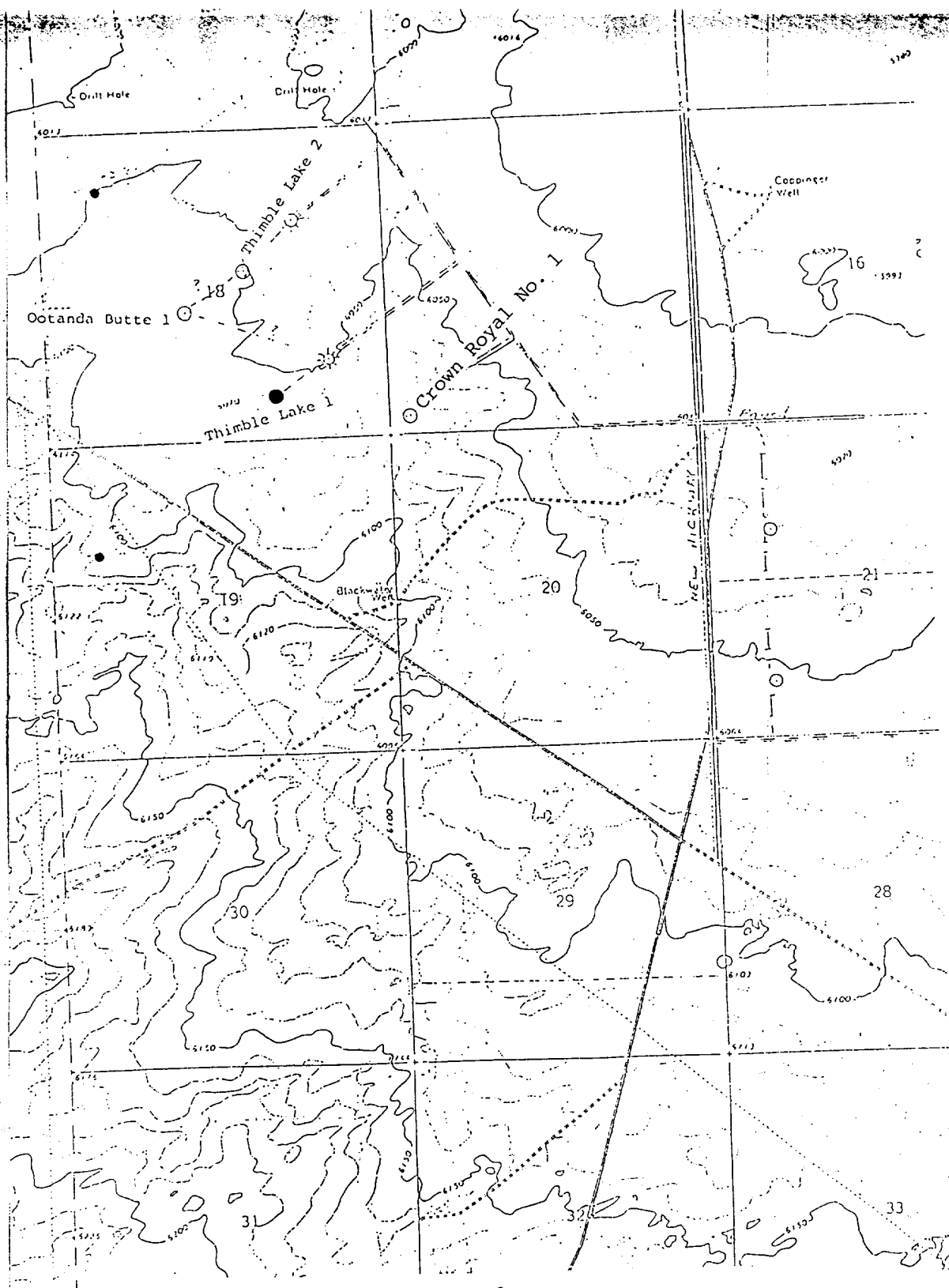
CERTIFICATION:

I hereby certify that the info. contained herein is true and complete to the best of my knowledge and belief.

Name
Steve S. Dunn
Position
Operations Manager
Company
Merrion Oil & Gas Corporation
Date
2/25/86

I hereby certify that the well location shown on this plat was plotted from field notes of actual surveys made by me or under my supervision, and that the same is true and correct to the best of my knowledge and belief.

State Survey
ROY A. RUSH
NEW MEXICO
8894
Feb. 12, 1986
Professional Engineer
under License No. **8894**



Vicinity Map for
MERRICH OIL & GAS CORP. #1 Thimble Lake
500 'FSL2400 'FEL Sec. 18-T27N-R13W
SAN JUAN COUNTY, NEW MEXICO

MERRION OIL & GAS CORPORATION

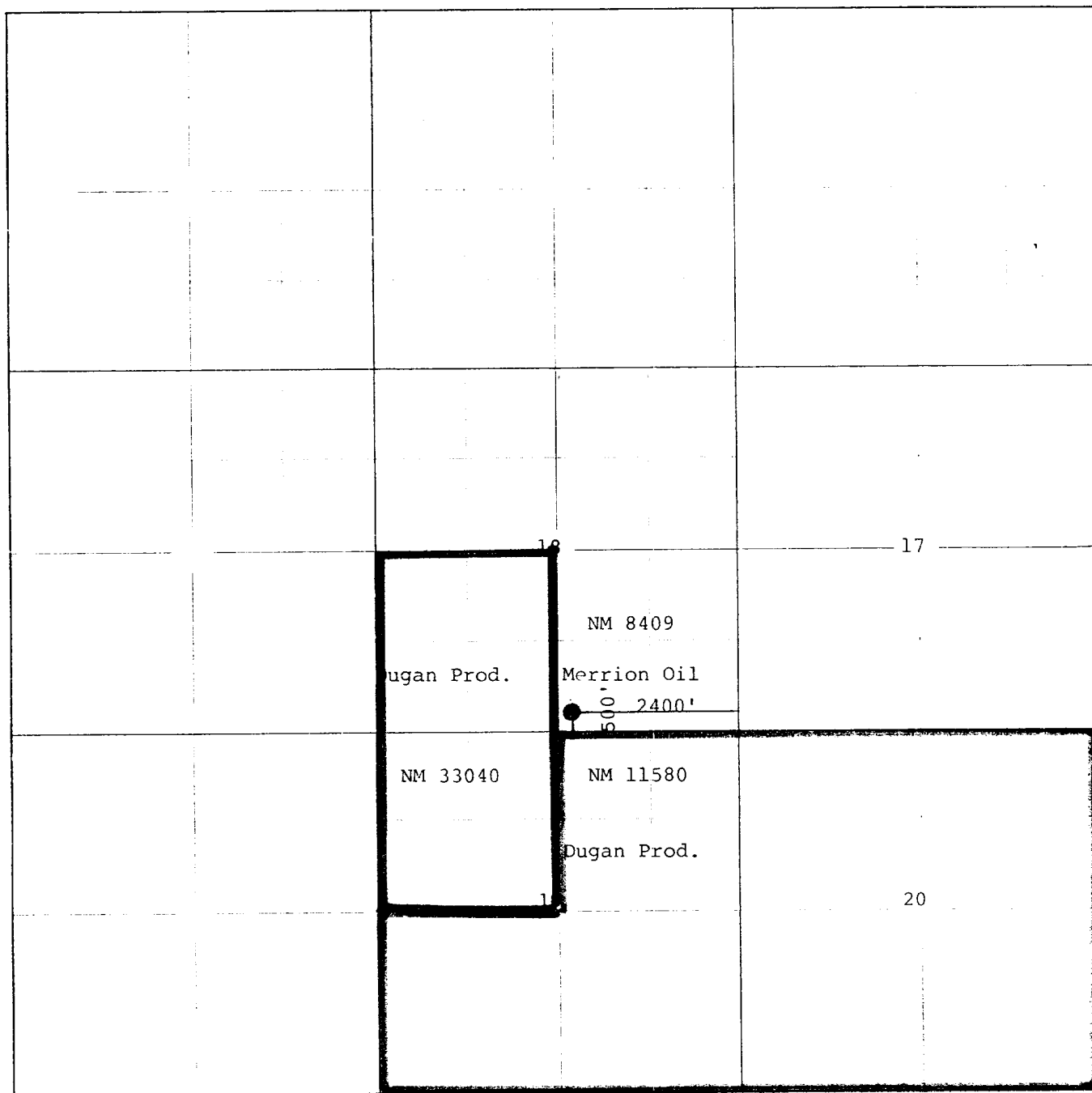
Thimble Lake No. 1

500' FSL and 2400' FEL

Sec. 18, T27N, R13W

San Juan Co., New Mexico

TOWNSHIP 27N RANGE 13W COUNTY San Juan STATE New Mexico



NM-8409 (WC)
3162.3-1(F) (019)

MAR 30 1988

CERTIFIED--RETURN RECEIPT REQUESTED
P-725-030-034

Merriam Oil & Gas Corporation
P. O. Box 840
Farmington, NM 87499

Gentlemen:

Enclosed is your Application for Permit to Drill (APD) well No. 1 Thimble Lake, SW/4SE/4 sec. 18, T. 27 N., R. 13 W., San Juan County, New Mexico, Lease NM-8409. The subject APD is rescinded and returned due to drilling not being commenced within one year of the approval date.

You are required to request surface rehabilitation instructions from this Office if construction activities occurred on the referenced drill site. If this Office does not receive comment within 15 days, we will presume that no construction occurred. Later discovery that construction activities have in fact occurred, will result in an assessment.

Sincerely,

W. L. FELLOWS

Ron Fellows
Area Manager

1 Enclosure

cc:
NMOCB

RECEIVED
APR 04 1988
OIL CON. DIV
DIST. 3

ABANDONED LOCATION