

UNITED STATES  
DEPARTMENT OF THE INTERIOR  
BUREAU OF LAND MANAGEMENT

APPLICATION FOR PERMIT TO DRILL, DEEPEN, OR PLUG BACK

1A. TYPE OF WORK

DRILL ☒

DEEPE

PLUG BACK ☐

B. TYPE OF WELL

OIL  
WELL ☐

GAS  
WELL ☒

OTHER

2. NAME OF OPERATOR

Meridian Oil Inc.

3. ADDRESS OF OPERATOR

PO Box 4289, Farmington, NM 87499

4. LOCATION OF WELL (Report location clearly and in accordance with any State requirements.)

At surface  
1340'N, 1685'E

At proposed prod. zone

14. DISTANCE IN MILES AND DIRECTION FROM NEAREST TOWN OR POST OFFICE\*

14 miles from Blanco, NM

15. DISTANCE FROM PROPOSED\*

LOCATION TO NEAREST  
PROPERTY OR LEASE LINE, FT.  
(Also to nearest drilg. unit line, if any)

1340'

16. NO. OF ACRES IN LEASE

1261.04

17. NO. OF ACRES ASSIGNED  
TO THIS WELL

320.00

18. DISTANCE FROM PROPOSED LOCATION\*  
TO NEAREST WELL, DRILLING, COMPLETED,  
OR APPLIED FOR, ON THIS LEASE, FT.

140'

19. PROPOSED DEPTH

2290'

20. ROTARY OR CABLE TOOLS

Rotary

21. ELEVATIONS (Show whether DF, RT, GR, etc.)

5870' GL

22. APPROX. DATE WORK WILL START\*

23. This action is subject to technical and procedural review pursuant to 43 CFR 3165.3 and appeal pursuant to 43 CFR 3165.4. PROPOSED CASING AND CEMENTING PROGRAM SUBJECT TO A SEPARATE APPLICATION ATTACHED

SIZE OF HOLE	SIZE OF CASING	WEIGHT PER FOOT	SETTING DEPTH	QUANTITY OF CEMENT
12 1/4"	9 5/8"	32.3#	200'	125 cf. circulated
8 3/4"	7"	20.0#	2185'	212 cf circ. surface
6 1/4"	5 1/2" liner	15.5#	2290'	do not cement

The Fruitland coal formation will be completed.

A 3000 psi WP and 6000 psi test double gate preventer equipped with blind and pipe rams will be used for blow out prevention on this well.

This gas is dedicated.

The N/2 of Section 26 is dedicated to this well.

RECEIVED

MAR 21 1984

OIL CON. DIV.

DIS. 2

IN ABOVE SPACE DESCRIBE PROPOSED PROGRAM: If proposal is to deepen or plug back, give data on present productive zone and proposed new productive zone. If proposal is to drill or deepen directionally, give pertinent data on subsurface locations and measured and true vertical depths. Give blowout preventer program, if any.

24. SIGNED [Signature] TITLE Regulatory Affairs DATE 01-04-89

(This space for Federal or State office use)

PERMIT NO.

APPROVAL DATE

APPROVED BY

TITLE

APPROVED  
AS AMENDED

CONDITIONS OF APPROVAL, IF ANY:

held on log of well, no rights

or photo of well, etc.

\*See Instructions On Reverse Side

Title 18 U.S.C. Section 1001, makes it a crime for any person knowingly and willfully to make to any department or agency of the United States any false, fictitious or fraudulent statements or representations as to any matter within its jurisdiction.

All distances must be from the outer boundaries of the Section.

Operator <b>Meridian Oil Inc.</b>		Lease <b>Howell</b>		Well No. <b>800</b>	
Unit Letter <b>G</b>	Section <b>26</b>	Township <b>28 North</b>	Range <b>8 West</b>	County <b>San Juan</b>	
Actual Footage Location of Wells <b>1340</b> feet from the <b>North</b> line and <b>1685</b> feet from the <b>East</b> line					
Ground Level Elev. <b>5870</b>	Producing Formation <b>Fruitland Coal</b>		Pool <b>Basin</b>		Dedicated Acreage: <b>320</b> Acres

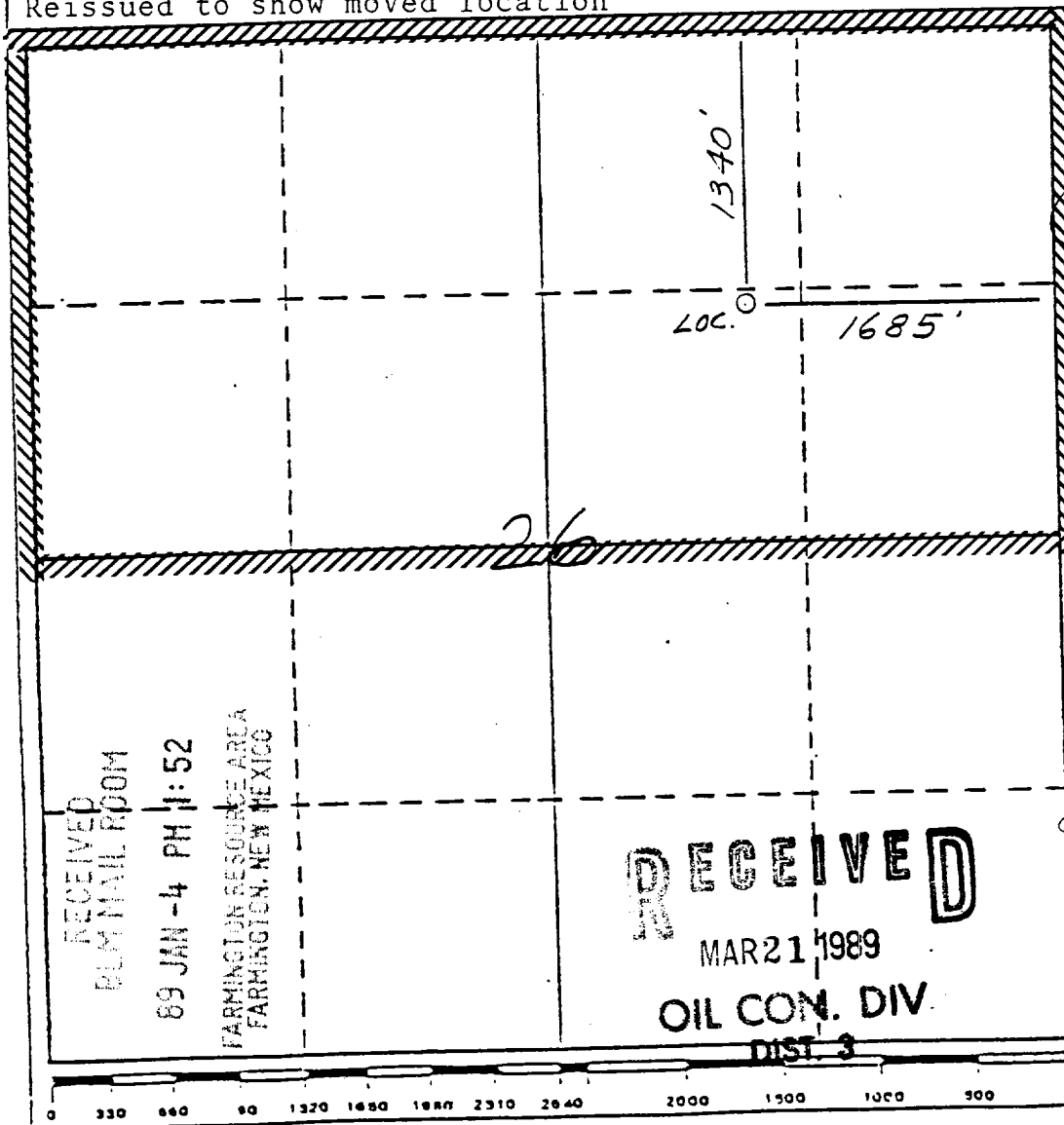
1. Outline the acreage dedicated to the subject well by colored pencil or hatchure marks on the plat below.
2. If more than one lease is dedicated to the well, outline each and identify the ownership thereof (both as to working interest and royalty).
3. If more than one lease of different ownership is dedicated to the well, have the interests of all owners been consolidated by communitization, unitization, force-pooling, etc?

☐ Yes ☐ No If answer is "yes," type of consolidation \_\_\_\_\_

If answer is "no," list the owners and tract descriptions which have actually been consolidated. (Use reverse side of this form if necessary.) \_\_\_\_\_

No allowable will be assigned to the well until all interests have been consolidated (by communitization, unitization, forced-pooling, or otherwise) or until a non-standard unit, eliminating such interests, has been approved by the Division.

Reissued to show moved location



## CERTIFICATION

I hereby certify that the information contained herein is true and complete to the best of my knowledge and belief.

*Neale C. Edwards*  
Name

Regulatory Affairs  
Position

Meridian Oil Inc.  
Company

1-4-89  
Date

Date

I hereby certify that the well location shown on this plat was plotted from the notes of actual survey made by me under supervision, and that the same is true and correct to the best of my knowledge and belief.

*Neale C. Edwards*  
Date Surveyed  
12-12-88

Registered Professional Engineer  
and/or Land Surveyor

Neale C. Edwards

Certificate No.

6857

