

UNITED STATES
DEPARTMENT OF THE INTERIOR
BUREAU OF LAND MANAGEMENT

APPLICATION FOR PERMIT TO DRILL, DEEPEN, OR PLUG BACK

1a. TYPE OF WORK DRILL	5. LEASE NUMBER SF-078050
1b. TYPE OF WELL GAS SINGLE ZONE	6. IF INDIAN, ALL. OR TRIBE NAME
2. OPERATOR MERIDIAN OIL INC.	7. UNIT AGREEMENT NAME
3. ADDRESS & PHONE NO. OF OPERATOR P O BOX 4289 FARMINGTON, NM 87499	8. FARM OR LEASE NAME TURNER HUGHES
4. LOCATION OF WELL 790'N 1330'E	9. WELL NO. 272
14. DISTANCE IN MILES FROM NEAREST TOWN	10. FIELD, POOL, OR WILDCAT BASIN FRUITLAND COAL
	11. SEC. T. R. M OR BLK. SEC. 4 T27N R09W NMPM
	12. COUNTY SAN JUAN
	13. STATE NM
15. DISTANCE FROM PROPOSED LOCATION TO NEAREST PROPERTY OR LEASE LINE. 790'	16. ACRES IN LEASE 17. ACRES ASSIGNED TO WELL 1195.05 0.00 302.72
18. DISTANCE FROM PROPOSED LOCATION TO NEAREST WELL DR. COMPL., OR APPLIED FOR ON THIS LEASE. 0'	19. PROPOSED DEPTH 2943'
	20. ROTARY OR CABLE TOOLS ROTARY
21. ELEVATIONS (DF, FT, GR, ETC.) 6860'GL	22. APPROX. DATE WORK WILL START

DRILLING OPERATIONS AUTHORIZED ARE
SUBJECT TO COMPLIANCE WITH ATTACHED
"GENERAL REQUIREMENTS"

23. PROPOSED CASING AND CEMENTING PROGRAM

*SEE OPERATIONS PLAN

APPROVED
AS AMENDED

APR 04 1989

AREA MANAGER

24. AUTHORIZED BY: *[Signature]*
REGULATORY AFFAIRS

DATE: 3-29-89

"Approval of this application is based on the information provided by the applicant and the Bureau of Land Management."

NOTE: THIS FORMAT IS ISSUED IN LIEU OF US BLM FORM 3160-3.

holder legal or title to this land.

NMOCG

OPERATIONS PLAN

DATE: MAR 15, 1989

Well Name: 272 TURNER HUGHES 790'N 1330'E
Sec. 4 T27N R09W SAN JUAN NEW MEXICO
BASIN FRUITLAND COAL Elevation 6860'GL

Formation tops: Surface- SAN JOSE
Ojo Alamo- 2002
Kirtland- 2082
Fruitland- 2687
Fruitland Coal Top- 2824
Fruitland Coal Base- 2942
Intermediate TD- 2804
Total Depth- 2943
Pictured Cliffs- 2954

Logging Program: Mud logs from intermediate to total depth.

Mud Program: Low solid non-dispersed mud from surface to total depth.

Casing Program:	Hole Size	Depth Interval	Csg. Size	Weight	Grade
	12 1/4"	0 - 200	9 5/8"	32.3#	H-40
	8 3/4"	0 - 2804	7"	20.0#	K-55
	6 1/4"	2754 - 2943	5 1/2"	15.5#	K-55
Tubing Program:		0 - 2943	2 7/8"	6.5#	J-55

Float Equipment: 9 5/8" surface casing - saw tooth guide shoe.

7" intermediate casing - guide shoe and self-fill insert float valve. Three centralizers run every other joint above shoe. Run insert float one joint above the guide shoe.

5 1/2" production liner - float shoe on bottom and a pre-drilled liner run to the 7" casing with a minimum 50' overlap. Liner hanger is a double slip grip type.

Wellhead Equipment: 9 5/8" x 7" x 2 7/8" x 11" 3000 psi xmas tree assembly.

Cementing:

9 5/8" surface casing - cement with 106 sacks of class "B" cement with 1/4# flocele/sack and 3% calcium chloride (125 cu ft. of slurry, 100% excess to circulate to surface). WOC 12 hours. Test casing to 600 psi for 30 minutes.

7" intermediate casing - lead with 64 sacks of 65/35 class "B" poz with 6% gel, 2% calcium chloride and 1/2 cu.ft. Perlite/sack (10.3 gallons of water/sack) tail with 100 sacks of class "B" with 2% calcium chloride. 241 cu ft. of slurry, 100% excess to cover the Ojo Alamo. Run temperature survey at 8 hours. WOC 12 hours. Test casing to 1500 psi for 30 minutes.

5 1/2" liner - do not cement.

The Fruitland coal formation will be completed.

A 3000 psi WP and 6000 psi test double gate preventer equipped with blind and pipe rams will be used for blow out prevention on this well. This gas is dedicated.

The E/2 of Section 4 is dedicated to this well.

Submit to Appropriate
District Office
State Leases - 4 copies
Fee Leases - 3 copies

State of New Mexico
Energy, Minerals and Natural Resources Department

Form C-102
Revised 1-1-89

OIL CONSERVATION DIVISION

DISTRICT I
P.O. Box 1980, Hobbs, NM 88240

P.O. Box 2088

Santa Fe, New Mexico 87504-2088

DISTRICT II
P.O. Drawer DD, Artesa, NM 88210

DISTRICT III
1000 Rio Brazos Rd., Aztec, NM 87410

WELL LOCATION AND ACREAGE DEDICATION PLAT

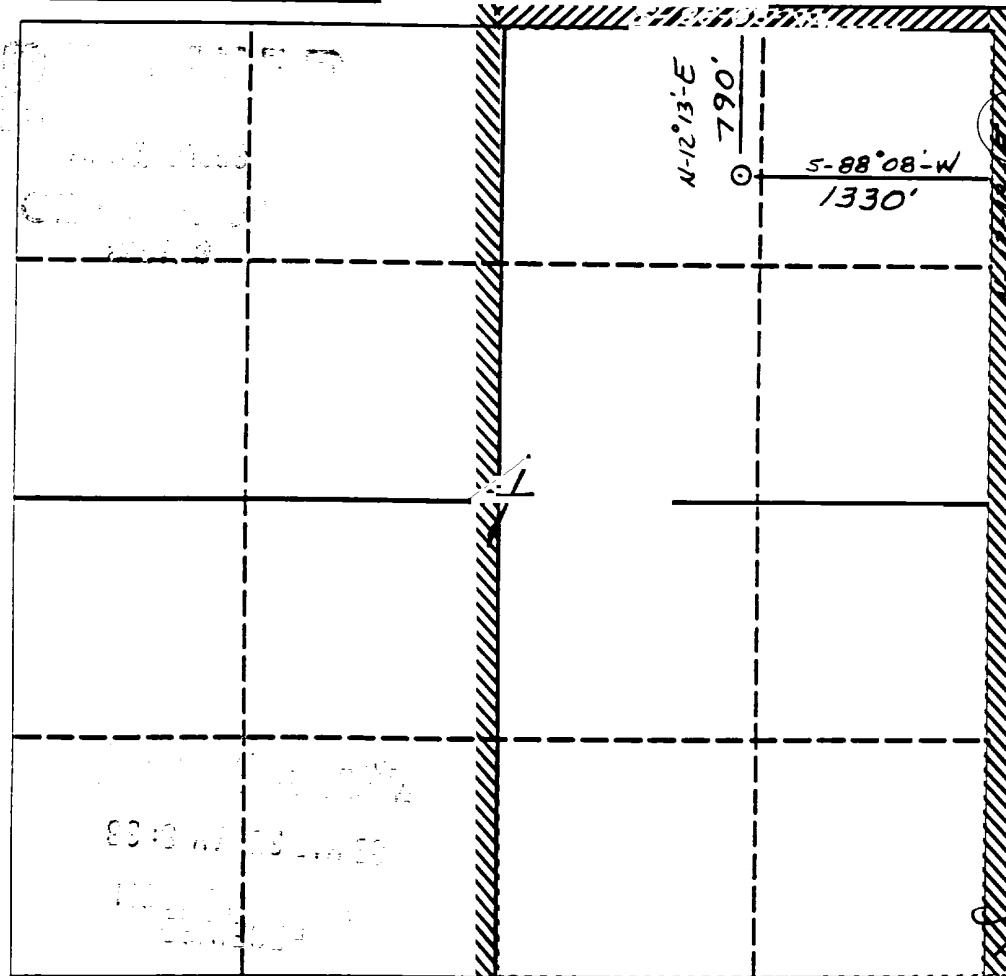
All Distances must be from the outer boundaries of the section

Operator Meridian Oil Inc.			Lease Turner Hughes (SF-078050)		Well No. 272
Unit Letter B	Section 4	Township 27 North	Range 9 West	County San Juan	
Actual Footage Location of Well: 790 feet from the North line and 1330 feet from the East line					
Ground level Elev. 6860'	Producing Formation Fruitland Coal		Pool Basin	Dedicated Acreage: 302.72 Acres	

- Outline the acreage dedicated to the subject well by colored pencil or machine marks on the plat below.
- If more than one lease is dedicated to the well, outline each and identify the ownership thereof (both as to working interest and royalty).
- If more than one lease of different ownership is dedicated to the well, have the interest of all owners been consolidated by communitization, unitization, force-pooling, etc.?
☐ Yes ☐ No If answer is "yes" type of consolidation _____

If answer is "no" list the owners and tract descriptions which have actually been consolidated. (Use reverse side of this form if necessary.)

No allowable will be assigned to the well until all interests have been consolidated (by communitization, unitization, forced-pooling, or otherwise) or until a non-standard unit, eliminating such interest, has been approved by the Division.



OPERATOR CERTIFICATION

I hereby certify that the information contained herein is true and complete to the best of my knowledge and belief.

Signature
Peggy Bradfield

Printed Name
Regulatory Affairs

Position
Meridian Oil Inc.

Company
3-29-89

Date

SURVEYOR CERTIFICATION

I hereby certify that the well location shown on this plat was plotted from field notes of actual surveys made by me or under my supervision, and that the same is true and correct to the best of my knowledge and belief. 2-28-89

Date Surveyed

Signature
Neal C. Edwards

Signature & Seal of Professional Surveyor

Certificate No. 6857

T-27-N

R-9-W

TURNER HUGHES
272

HARRIS

GRANT 128

Hoot Owl Springs

Hoot

Owl

Canyon

Canyon

Jaquez