



## OPERATIONS PLAN

DATE: APR 7, 1989

Well Name: 155 ROWLEY 1420'S 1850'W  
 Sec. 17 T27N R10W SAN JUAN NEW MEXICO  
 BASIN FRUITLAND COAL Elevation 6148'GL

Formation tops: Surface- NACIMIENTO  
 Ojo Alamo- 850  
 Kirtland- 1020  
 Fruitland- 1605  
 Fruitland Coal Top- 1750  
 Fruitland Coal Base- 1915  
 Intermediate TD- 1730  
 Total Depth- 1915  
 Pictured Cliffs- 1916

Logging Program: Mud logs from intermediate to total depth.

Mud Program: Low solid non-dispersed mud from surface to total depth.

Casing Program:	Hole Size	Depth Interval	Csg. Size	Weight	Grade
	12 1/4"	0 - 200	9 5/8"	32.3#	H-40
	8 3/4"	0 - 1730	7"	20.0#	K-55
	6 1/4"	1680 - 1915	5 1/2"	15.5#	K-55
Tubing Program:		0 - 1915	2 7/8"	6.5#	J-55

Float Equipment: 9 5/8" surface casing - saw tooth guide shoe.

7" intermediate casing - guide shoe and self-fill insert float valve. Three centralizers run every other joint above shoe. Run insert float one joint above the guide shoe.

5 1/2" production liner - float shoe on bottom and a pre-drilled liner run to the 7" casing with a minimum 50' overlap. Liner hanger is a double slip grip type.

Wellhead Equipment: 9 5/8" x 7" x 2 7/8" x 11" 3000 psi xmas tree assembly.

## Cementing:

9 5/8" surface casing - cement with 106 sacks of class "B" cement with 1/4# flocele/sack and 3% calcium chloride (125 cu ft. of slurry, 100% excess to circulate to surface). WOC 12 hours. Test casing to 600 psi for 30 minutes.

7" intermediate casing - lead with 76 sacks of 65/35 class "B" poz with 6% gel, 2% calcium chloride and 1/2 cu.ft. Perlite/sack (10.3 gallons of water/sack) tail with 100 sacks of class "B" with 2% calcium chloride. 265 cu ft. of slurry, 100% excess to cover the Ojo Alamo. Run temperature survey at 8 hours. WOC 12 hours. Test casing to 1500 psi for 30 minutes.

5 1/2" liner - do not cement.

The Fruitland coal formation will be completed.

A 3000 psi WP and 6000 psi test double gate preventer equipped with blind and pipe rams will be used for blow out prevention on this well. This gas is dedicated.

The W/2 of Section 17 is dedicated to this well.

Submit to Appropriate District Office  
 State Lease - 4 copies  
 Fee Lease - 3 copies

State of New Mexico  
 Energy, Minerals and Natural Resources Department

Form C-102  
 Revised 1-1-89

OIL CONSERVATION DIVISION  
 P.O. Box 2088  
 Santa Fe, New Mexico 87504-2088

DISTRICT I  
 P.O. Box 1980, Hobbs, NM 88240

DISTRICT II  
 P.O. Drawer DD, Artesia, NM 88210

DISTRICT III  
 1000 Rio Brazos Rd., Aztec, NM 87410

WELL LOCATION AND ACREAGE DEDICATION PLAT  
 All Distances must be from the outer boundaries of the section

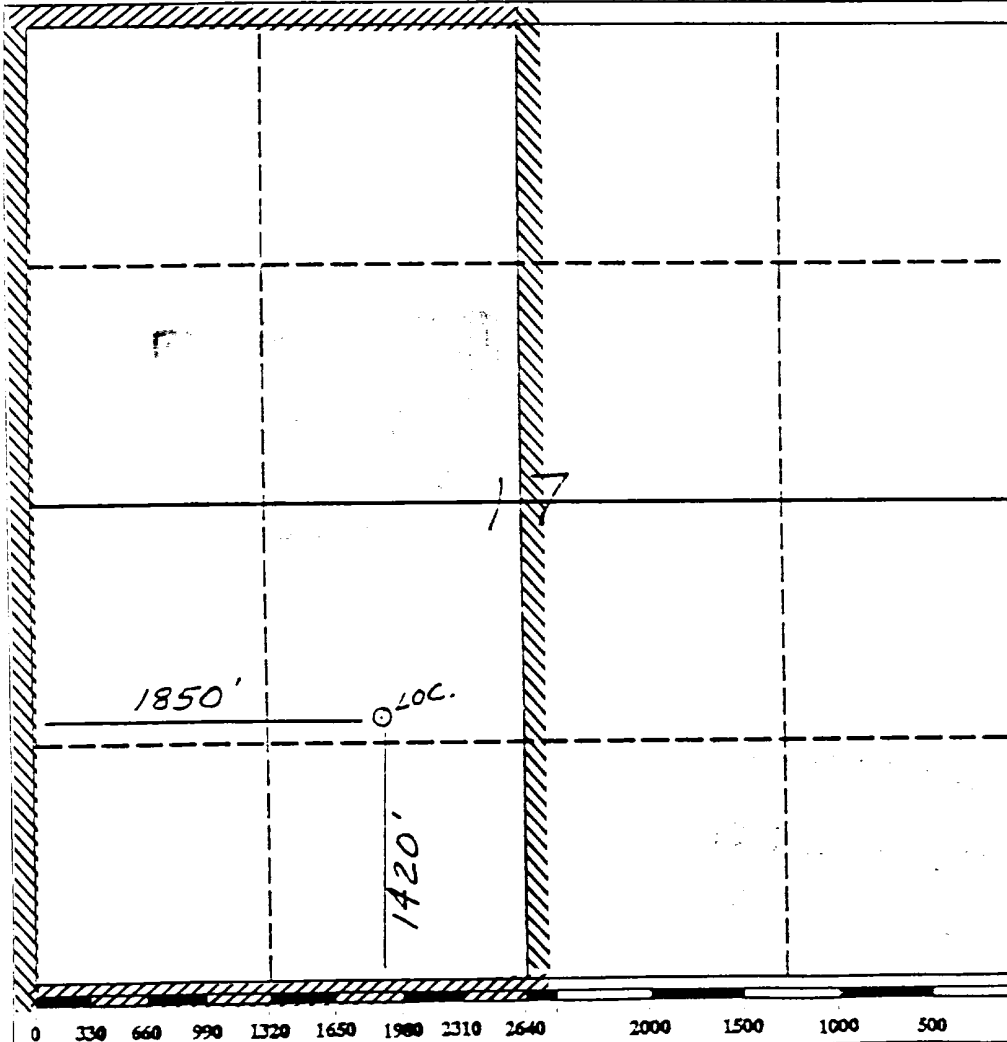
Operator Meridian Oil Inc.		Lease Rowley (SF-077875)		Well No. 155
Unit Letter K	Section 17	Township 27 North	Range 10 West	County San Juan
Actual Footage Location of Well: 1420 feet from the South line and 1850 feet from the West line				
Ground level Elev. 6148	Producing Formation Fruitland Coal	Pool Basin	Dedicated Acreage: 320 Acres	

- Outline the acreage dedicated to the subject well by colored pencil or hachure marks on the plat below.
- If more than one lease is dedicated to the well, outline each and identify the ownership thereof (both as to working interest and royalty).
- If more than one lease of different ownership is dedicated to the well, have the interest of all owners been consolidated by communitization, unitization, force-pooling, etc.?
 

Yes  No If answer is "yes" type of consolidation \_\_\_\_\_

If answer is "no" list the owners and tract descriptions which have actually been consolidated. (Use reverse side of this form if necessary.)

No allowable will be assigned to the well until all interests have been consolidated (by communitization, unitization, forced-pooling, or otherwise) or until a non-standard unit, eliminating such interest, has been approved by the Division.



**OPERATOR CERTIFICATION**

I hereby certify that the information contained herein is true and complete to the best of my knowledge and belief.

*Peggy Bradford*  
 Signature

Peggy Bradford  
 Printed Name

Regulatory Affairs  
 Position

Meridian Oil Inc.  
 Company

4-7-89  
 Date

**SURVEYOR CERTIFICATION**

I hereby certify that the well location shown on this plat was plotted from field notes of actual surveys made by me or under my supervision, and that the same is true and correct to the best of my knowledge and belief.

1-26-89  
 Date Surveyed

Neale & Edwards  
 Signature & Seal of Professional Surveyor

*Neale & Edwards*  
 Signature

6857  
 Certificate No. NEW MEXICO LAND SURVEYOR

T-77 N  
R-10-W

5

#  
ROWLEY 155

