

UNITED STATES
DEPARTMENT OF THE INTERIOR
BUREAU OF LAND MANAGEMENT

APPLICATION FOR PERMIT TO DRILL, DEEPEN, OR PLUG BACK

RECEIVED

JUL 26 1989

**OIL CON. DIV.
DIST. 3**

1a. TYPE OF WORK
DRILL
1b. TYPE OF WELL
GAS

5. LEASE NUMBER
SF-078390A
6. IF INDIAN, ALL. OR TRIBE NAME

2. OPERATOR
MERIDIAN OIL INC.
3. ADDRESS & PHONE NO. OF OPERATOR
P O BOX 4289
FARMINGTON, NM 87499

7. UNIT AGREEMENT NAME
8. FARM OR LEASE NAME
HARDIE D
9. WELL NO.
807

4. LOCATION OF WELL
995'S 1485'W

10. FIELD, POOL, OR WILDCAT
BASIN FRUITLAND COAL
11. SEC. T. R. M OR BLK.
SEC. 14 T28N R08W NMPM

14. DISTANCE IN MILES FROM NEAREST TOWN
11 MILES FROM BLANCO

12. COUNTY
SAN JUAN
13. STATE
NM

15. DISTANCE FROM
PROPOSED LOCATION TO NEAREST PROPERTY
OR LEASE LINE. 995'

16. ACRES IN LEASE 17. ACRES ASSIGNED TO WELL
614.72 320.00

This action is subject to technical and
professional review pursuant to 43 CFR 3166.
and appeal pursuant to 43 CFR 3165.4.

18. DISTANCE FROM
PROPOSED LOCATION TO NEAREST WELL DR.
COMPL., OR APPLIED FOR ON THIS LEASE. 300'

19. PROPOSED DEPTH 20. ROTARY OR CABLE TOOLS
2871' ROTARY

DRILLING OPERATIONS AUTHORIZED ARE
SUBJECT TO COMPLIANCE WITH ATTACHED

21. ELEVATIONS (DF, FT, GR, ETC.)
6387'GL

22. APPROX. DATE WORK WILL START

23. PROPOSED CASING AND CEMENTING PROGRAM

*SEE OPERATIONS PLAN

This action does not constitute an approval of the applicant's activities or constitute a right or title to the lands.

24. AUTHORIZED BY: *[Signature]*
REGULATORY AFFAIRS

7-10-89
DATE

PERMIT NO. _____ APPROVAL DATE _____
APPROVED AS AMENDED

APPROVED BY _____ TITLE _____ DATE _____

JUL 24 1989

NOTE: THIS FORMAT IS ISSUED IN LIEU OF US BLM FORM 3160-3 AREA MANAGER

ok

NMOCD

Submit to Advertiser
 District Office
 State Lease - 4 copies
 Fee Lease - 3 copies

State of New Mexico
 Energy, Minerals and Natural Resources Department

Form C-102
 Revised 1-1-89

OIL CONSERVATION DIVISION
 P.O. Box 2088
 Santa Fe, New Mexico 87504-2088

DISTRICT I
 P.O. Box 1980, Hobbs, NM 88240

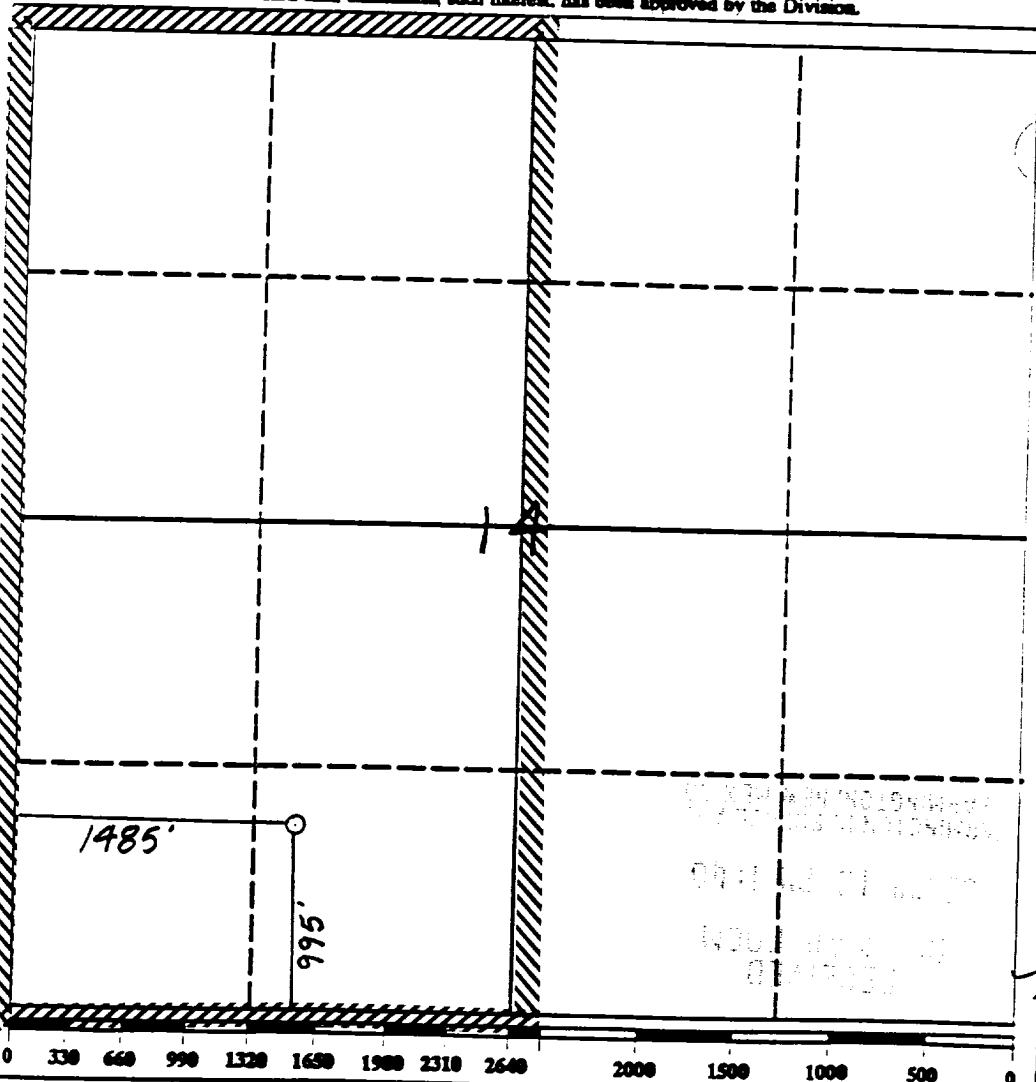
DISTRICT II
 P.O. Drawer DD, Artesa, NM 88210

DISTRICT III
 1000 Rio Brazos Rd., Aztec, NM 87410

WELL LOCATION AND ACREAGE DEDICATION PLAT
 All Distances must be from the outer boundaries of the section

Operator Meridian Oil Inc.		Lease Hardie D. (SF-078390A)		Well No. 807
Unit Letter N	Section 14	Township 28 North	Range 8 West	County San Juan
Actual Footage Location of Well: 995 feet from the South line and 1485 feet from the West line				
Ground level Elev. 6387	Producing Formations Fruitland Coal	Pool Basin	Dedicated Acreage: 320.00 Acres	

- Outline the acreage dedicated to the subject well by colored pencil or fracture marks on the plat below.
- If more than one lease is dedicated to the well, outline each and identify the ownership thereof (both as to working interest and royalty).
- If more than one lease of different ownership is dedicated to the well, have the interest of all owners been consolidated by communitization, unitization, force-pooling, etc.?
 Yes No If answer is "yes" type of consolidation _____
 If answer is "no" list the owners and tract descriptions which have actually been consolidated. (Use reverse side of this form if necessary.)
 No allowable will be assigned to the well until all interests have been consolidated (by communitization, unitization, force-pooling, or otherwise) or until a non-standard unit, eliminating such interest, has been approved by the Division.



OPERATOR CERTIFICATION
 I hereby certify that the information contained herein is true and complete to the best of my knowledge and belief.

Peggy Bradfield
 Signature

Peggy Bradfield
 Printed Name

Regulatory Affairs
 Position

Meridian Oil Inc.
 Company

7-10-89
 Date

SURVEYOR CERTIFICATION
 I hereby certify that the well location shown on this plat was plotted from field notes or actual surveys made by me or under my supervision, and that the same is true and correct to the best of my knowledge and belief.

Date Surveyed _____

Neale C. Edwards
 Signature of Sealed Professional Surveyor

6857
 Certificate No.

6857

Well Name: 807 HARDIE D 995'S 1485'W
 Sec. 14 T28N R08W SAN JUAN NEW MEXICO
 BASIN FRUITLAND COAL Elevation 6387'GL

Formation tops: Surface- SAN JOSE
 Ojo Alamo- 1707
 Kirtland- 1819
 Fruitland- 2596
 Fruitland Coal Top- 2760
 Fruitland Coal Base- 2870
 Intermediate TD- 2749
 Total Depth- 2871
 Pictured Cliffs- 2881

Logging Program: Mud logs from intermediate to total depth.

Mud Program:	Interval	Type	Weight	Visc.	Fl. Loss
	0 - 200	Spud	8.4 - 8.9	40-50	no control
	200 - 2749	Non-dispersed	8.4 - 9.1	30-60	no control
	2749 - 2871	Formation Water	8.4		no control

Casing Program:	Hole Size	Depth Interval	Csg. Size	Weight	Grade
	12 1/4"	0 - 200	9 5/8"	32.3#	H-40
	8 3/4"	0 - 2749	7"	20.0#	K-55
	6 1/4"	2699 - 2871	5 1/2"	15.5#	K-55
Tubing Program:		0 - 2871	2 7/8"	6.5#	J-55

Float Equipment: 9 5/8" surface casing - saw tooth guide shoe.

7" intermediate casing - guide shoe and self-fill insert float valve. Three centralizers run every other joint above shoe. Run insert float one joint above the guide shoe.

5 1/2" production casing - float shoe on bottom and a pre-drilled liner run to the 7" casing with a minimum 50' overlap. Liner hanger is a double slip grip type.

Wellhead Equipment: 9 5/8" x 7" x 2 7/8" x 11" 3000 psi xmas tree assembly.

Cementing:

9 5/8" surface casing - cement with 106 sacks of class "B" cement with 1/4# flocele/sack and 3% calcium chloride (125 cu ft. of slurry, 100% excess to circulate to surface). WOC 12 hours. Test casing to 600 psi for 30 minutes.

7" intermediate casing - lead with 101 sacks of 65/35 class "B" poz with 6% gel, 2% calcium chloride and 1/2 cu ft. Perlite/sack (10.3 gallons of water/sack) tail with 100 sacks of class "B" with 2% calcium chloride. 313 cu ft. of slurry, 100% excess to cover the Ojo Alamo. Run temperature survey at 8 hours. WOC 12 hours. Test casing to 1500 psi for 30 minutes.

5 1/2" liner - do not cement.

T-28-N
R-8-W
HARDIE D 807

