

UNITED STATES
DEPARTMENT OF THE INTERIOR
GEOLOGICAL SURVEY

APPLICATION FOR PERMIT TO DRILL, DEEPEN, OR PLUG BACK

1a. TYPE OF WORK

DRILL ☒DEEPEN ☐PLUG BACK ☐

b. TYPE OF WELL

OIL
WELL ☐GAS
WELL ☒

OTHER

SINGLE

ZONE ☒

MULTIPLE

ZONE ☐

2. NAME OF OPERATOR

Marathon Oil Company

3. ADDRESS OF OPERATOR

P. O. Box 552, Midland, TX 79702

4. LOCATION OF WELL (Report location clearly and in accordance with any State requirements.)*

At surface

2451' FSL & 1849' FWL

At proposed prod. zone

2451' FSL & 1849' FWL

14. DISTANCE IN MILES AND DIRECTION FROM NEAREST TOWN OR POST OFFICE*

8.1 miles south of Bloomfield, NM

15. DISTANCE FROM PROPOSED*

LOCATION TO NEAREST

PROPERTY OR LEASE LINE, FT.

(Also to nearest drlg. unit line, if any)

791'

18. DISTANCE FROM PROPOSED LOCATION*

TO NEAREST WELL, DRILLING, COMPLETED,
OR APPLIED FOR, ON THIS LEASE, FT.

None on lease

16. NO. OF ACRES IN LEASE

-320-101-76

19. PROPOSED DEPTH

± 2000'

17. NO. OF ACRES ASSIGNED

TO THIS WELL

320.70 60/2

20. ROTARY OR CABLE TOOLS

Rotary

21. ELEVATIONS (Show whether DF, RT, GR, etc.)

6149' GR

22. APPROX. DATE WORK WILL START*

April 1, 1990

This action is subject to the approval and
procedural review pursuant to 43 CFR 3165.3 PROPOSED CASING AND CEMENTING PROGRAM
and applicable to 43 CFR 3165.4

SIZE OF CASING	WEIGHT PER FOOT	SETTING DEPTH	QUANTITY OF CEMENT
11"	8-5/8"	24#	250'
7-7/8"	5-1/2"	15.5#	2000'
			175 sacks circ to surface
			315 sacks circ to surface

Propose to drill to TD of ± 2000'.

All casing will be run and cemented in accordance with regulations and by approved methods.

Blowout prevention equipment will be as outlined in Additional Information.

See attached Multipoint Surface Use Plan and Additional Information for specific drilling operations.

"Approval of this action does
not warrant that the applicant
holds legal or equitable rights
or title to this lease."

RECEIVED
APR 6 1990
OIL CON. DIV.
DIST. 3

IN ABOVE SPACE DESCRIBE PROPOSED PROGRAM: If proposal is to deepen or plug back, give data on present productive zone and proposed new productive zone. If proposal is to drill or deepen directionally, give pertinent data on subsurface locations and measured and true vertical depths. Give blowout prevention program, if any.

24.

SIGNED

(This space for Federal or State office use)

TITLE Drilling Superintendent

DATE

3/3/90

PERMIT NO.

APPROVAL DATE

APPROVED BY

TITLE

CONDITIONS OF APPROVAL, IF ANY:

APPROVED
AS AMENDED
DATE

*See Instructions On Reverse Side

APR 12 1990
AREA MANAGER

Submit to Appropriate
District Office
State Leases - 4 copies
Fee Leases - 3 copies

State of New Mexico
Energy, Minerals and Natural Resources Department

Form C-142
Revised 1-1-89

OIL CONSERVATION DIVISION

P.O. Box 2088
Santa Fe, New Mexico 87504-2088

DISTRICT I
P.O. Box 1980, Hobbs, NM 88240

DISTRICT II
P.O. Drawer DD, Artesia, NM 88210

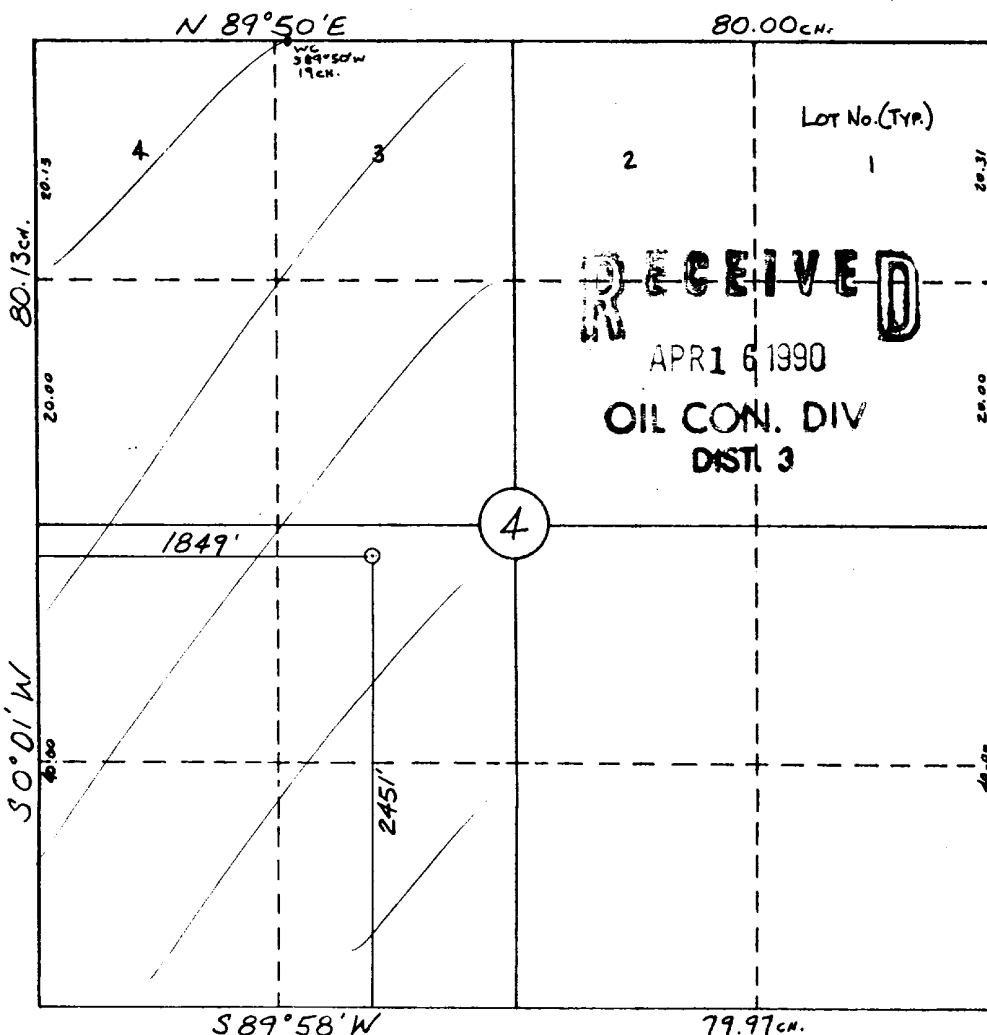
DISTRICT III
1000 Rio Brazos Rd., Aztec, NM 87410

WELL LOCATION AND ACREAGE DEDICATION PLAT

All Distances must be from the outer boundaries of the section

Operator MARATHON OIL COMPANY			Lease BOLACK 4		Well No. 4-1
Unit Letter K	Section 4	Township 27 N	Range 11 W	County San Juan	
Actual Footage Location of Well: 2451 feet from the South line and 1849 feet from the West line					
Ground level Elev. 6149	Producing Formation Fruitland Coal		Pool Basin Fruitland Coal		Dedicated Acreage 320 10/2 Acres
<p>1. Outline the acreage dedicated to the subject well by colored pencil or hatchure marks on the plat below.</p> <p>2. If more than one lease is dedicated to the well, outline each and identify the ownership thereof (both as to working interest and royalty).</p> <p>3. If more than one lease of different ownership is dedicated to the well, have the interest of all owners been consolidated by communitization, unitization, force-pooling, etc.? <input type="checkbox"/> Yes <input type="checkbox"/> No If answer is "yes" type of consolidation _____</p> <p>If answer is "no" list the owners and tract descriptions which have actually been consolidated. (Use reverse side of this form if necessary.) _____</p> <p>No allowable will be assigned to the well until all interests have been consolidated (by communitization, unitization, forced-pooling, or otherwise) or until a non-standard unit, eliminating such interest, has been approved by the Division.</p>					

0 330 660 990 1320 1650 1980 2310 2640 2970 3300 3630 3960 4290 4620 4950 5280 5610 5940 6270 6600



OPERATOR CERTIFICATION

I hereby certify that the information contained herein is true and complete to the best of my knowledge and belief.

Signature
S. L. Atnipp
Printed Name
S. L. Atnipp
Position
Drilling Superintendent
Company
Marathon Oil Company
Date
3/3/90

SURVEYOR CERTIFICATION

I hereby certify that the well location shown on this plat was plotted from field notes of actual surveys made by me or under my supervision, and that the same is true and correct to the best of my knowledge and belief.

2-13-90

Date Surveyed
William H. Mahnke II

Signature of Surveyor
Professional Surveyor

WILLIAM H. MAHNKE II
NEW MEXICO
#8466
PROFESSIONAL LAND SURVEYOR

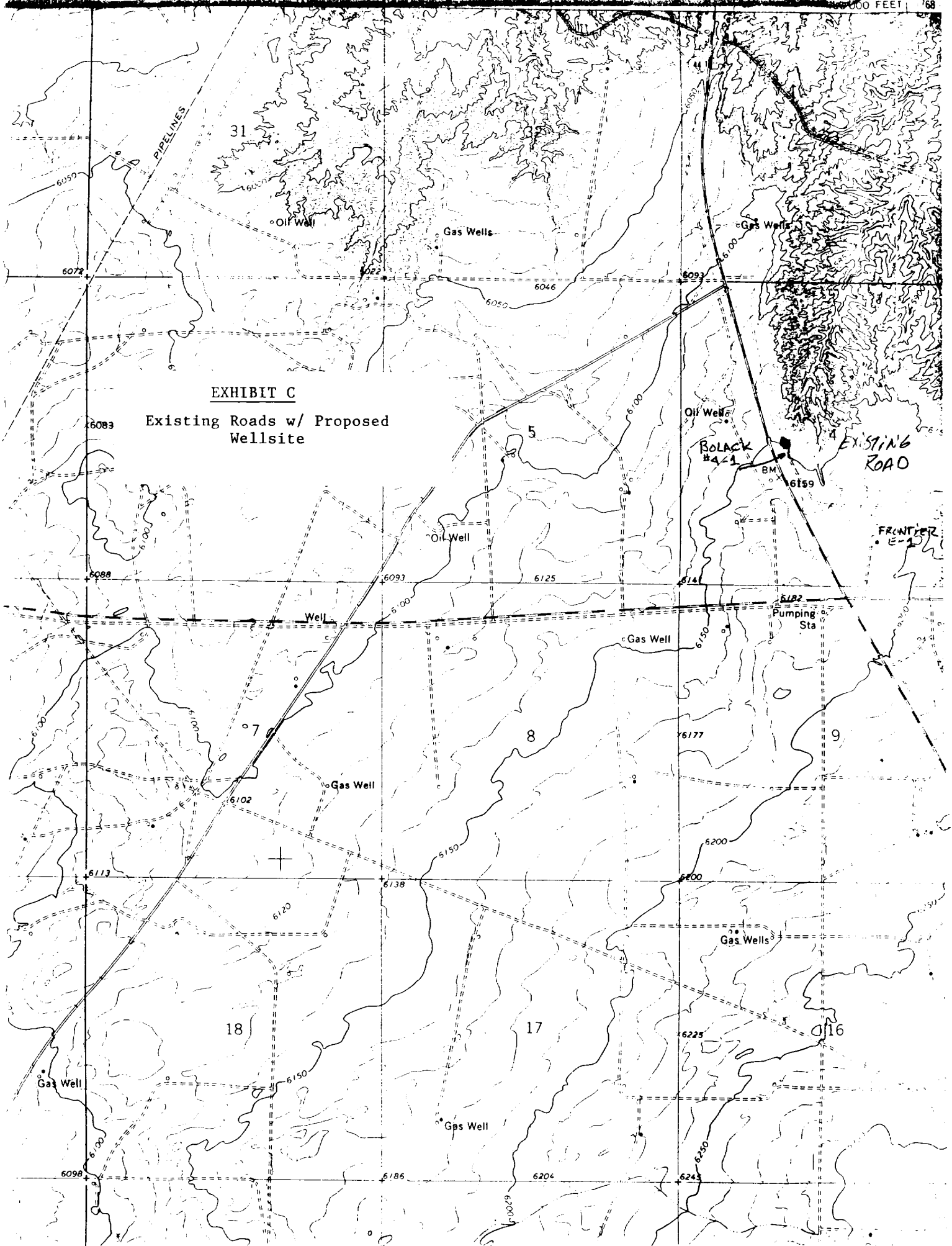


EXHIBIT C

Existing Roads w/ Proposed
Wellsite