

**UNITED STATES  
DEPARTMENT OF THE INTERIOR  
BUREAU OF LAND MANAGEMENT**

*30-045-27730*

**APPLICATION FOR PERMIT TO DRILL, DEEPEN, OR PLUG BACK**

1a. TYPE OF WORK DRILL		5. LEASE NUMBER SF-078571	
1b. TYPE OF WELL GAS		6. IF INDIAN, ALL. OR TRIBE NAME	
2. OPERATOR UNION OIL CO. OF CAL.		7. UNIT AGREEMENT NAME	
3. ADDRESS OF OPERATOR P O BOX 2074 FARMINGTON, NM, 87401 (505)-325-8786		8. FARM OR LEASE NAME DAY "B"	
4. LOCATION OF WELL 1535' FSL, 1570' FWL		9. WELL NO. # 9	
10. FIELD, POOL, OR WILDCAT BASIN FRUITLAND COAL		11. SEC. 07, T. 27N, R. 8W	
14. DISTANCE FROM NEAREST TOWN 30 Miles SE of Bloomfield	12. COUNTY San Juan	13. STATE New Mex.	
15. DISTANCE FROM PROPOSED LOCATION TO NEAREST PROPERTY OR LEASE LINE 1535'	16. ACRES IN LEASE <i>w/ 320.44</i> <i>640.44</i>	17. ACRES ASSIGNED TO WELL 320	
18. DISTANCE FROM PROPOSED LOCATION TO NEAREST WELL DRILLING, COMPLETED OR APPLIED FOR ON THIS LEASE: 340'	19. PROPOSED DEPTH This action is subject to technical and procedural review pursuant to 43 CFR 3165.3 2983 and appeal pursuant to 43 CFR 3165.4.	20. ROTARY OR CABLE TOOLS Rotary	
21. ELEVATIONS (DF, FT, GR, ETC.) 6762' GL	22. APPROX. DATE WORK WILL BEGIN Spring 1990		

23. PROPOSED CASING AND CEMENTING PROGRAM  
SEE ATTACHED DRILLING PLAN

24. AUTHORIZED BY: *Chris Russell*  
AGENT

*3/23/90*  
DATE

PERMIT NO. **RECEIVED** APPROVAL DATE \_\_\_\_\_

APPROVED BY *APR 09 1990* TITLE \_\_\_\_\_ DATE \_\_\_\_\_

**OIL CON. DIV.**  
NOTE: THIS FORM IS ISSUED IN LIEU OF BLM FORM 3160-3

*APR 04 1990*  
*F. A. Skelton*  
AREA MANAGER

Submit to Appropriate  
District Office  
State Lease - 4 copies  
Fee Lease - 3 copies

State of New Mexico  
Energy, Minerals and Natural Resources Department

Form C-102  
Revised 1-1-89

OIL CONSERVATION DIVISION

P.O. Box 2088  
Santa Fe, New Mexico 87504-2088

DISTRICT I  
P.O. Box 1980, Hobbs, NM 88240

DISTRICT II  
P.O. Drawer DD, Artesia, NM 88210

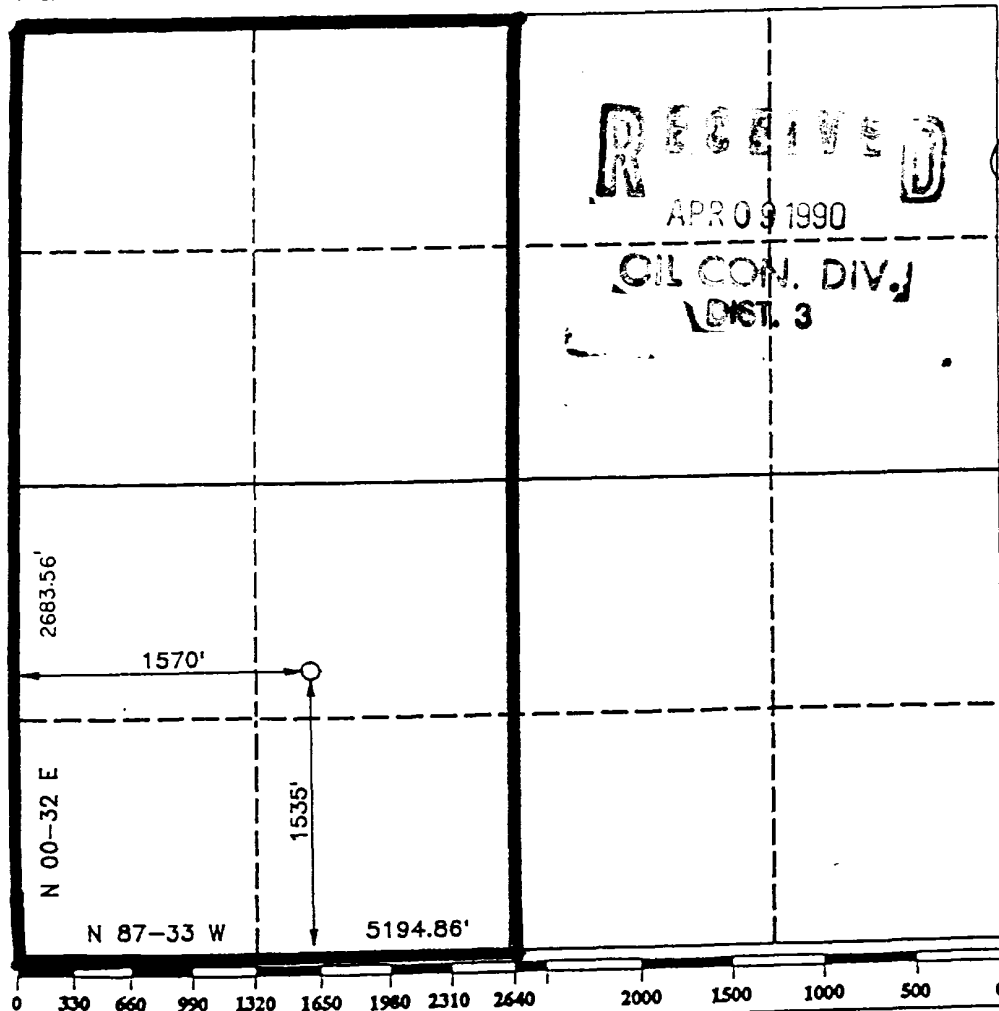
DISTRICT III  
1000 Rio Brazos Rd., Aztec, NM 87410

WELL LOCATION AND ACREAGE DEDICATION PLAT

All Distances must be from the outer boundaries of the section

Operator <b>UNION OIL CO. OF CALIFORNIA</b>		Lease <b>DAY B</b>		Well No. <b>9</b>
Unit Letter <b>K</b>	Section <b>7</b>	Township <b>T.27 N.</b>	Range <b>R.8 W.</b>	County <b>SAN JUAN COUNTY</b>
Actual Footage Location of Well: <b>1535</b> feet from the <b>SOUTH</b> line and <b>1570</b> feet from the <b>WEST</b> line				
Ground level Elev. <b>6762</b>	Producing Formation <b>Frontland Coal</b>		Pool <b>Basin Frontland Coal</b>	Dedicated Acreage: <b>320.44 Acres</b>

- Outline the acreage dedicated to the subject well by colored pencil or hatchure marks on the plat below.
- If more than one lease is dedicated to the well, outline each and identify the ownership thereof (both as to working interest and royalty).
- If more than one lease of different ownership is dedicated to the well, have the interest of all owners been consolidated by communitization, unitization, force-pooling, etc.?  
☐ Yes ☐ No If answer is "yes" type of consolidation \_\_\_\_\_  
If answer is "no" list the owners and tract descriptions which have actually been consolidated. (Use reverse side of this form if necessary.) \_\_\_\_\_  
No allowable will be assigned to the well until all interests have been consolidated (by communitization, unitization, forced-pooling, or otherwise) or until a non-standard unit, eliminating such interest, has been approved by the Division.



**RECEIVED**  
APR 09 1990  
OIL CON. DIV.  
DIST. 3

OPERATOR CERTIFICATION

I hereby certify that the information contained herein is true and complete to the best of my knowledge and belief.

Signature *Chris Russell*  
Printed Name **Chris Russell**  
Position **AGENT**  
Company **UNION**  
Date **3/23/90**

SURVEYOR CERTIFICATION

I hereby certify that the well location shown on this plat was plotted from field notes of actual surveys made by me or under my supervision, and that the same is true and correct to the best of my knowledge and belief.

Date Surveyed **MARCH 23 1990**  
Signature & Seal of Professional Surveyor  
**R. HOWARD DUGGETT**  
Certificate No. **9679**  
Registered Professional Land Surveyor

Testing Procedure:

The BOP and related equipment will be tested to 2000 psi in accordance with the provisions of Onshore Oil and Gas Order No. 2.

BOP's will be operationally tested daily, and each test will be logged in the IADC Daily Drilling Report.

Blooie line:

The blooie line and related equipment will meet all requirements of Onshore Oil and Gas Order No. 2.

4. CASING AND CEMENTING PROGRAM

<u>SURFACE CASING</u>						
<u>AGE</u>	<u>Depth</u>	<u>Hole Size</u>	<u>Size</u>	<u>Weight</u>	<u>Grade</u>	<u>Thread</u>
New	0-225'	12-1/4"	8-5/8"	24.0#	K-55	ST&C

<u>INTERMEDIATE CASING</u>						
<u>Age</u>	<u>Depth</u>	<u>Hole Size</u>	<u>Size</u>	<u>Weight</u>	<u>Grade</u>	<u>Thread</u>
New	0-TD	7-7/8"	4-1/2"	10.5#	K-55	ST&C

MINIMUM SAFETY FACTORS

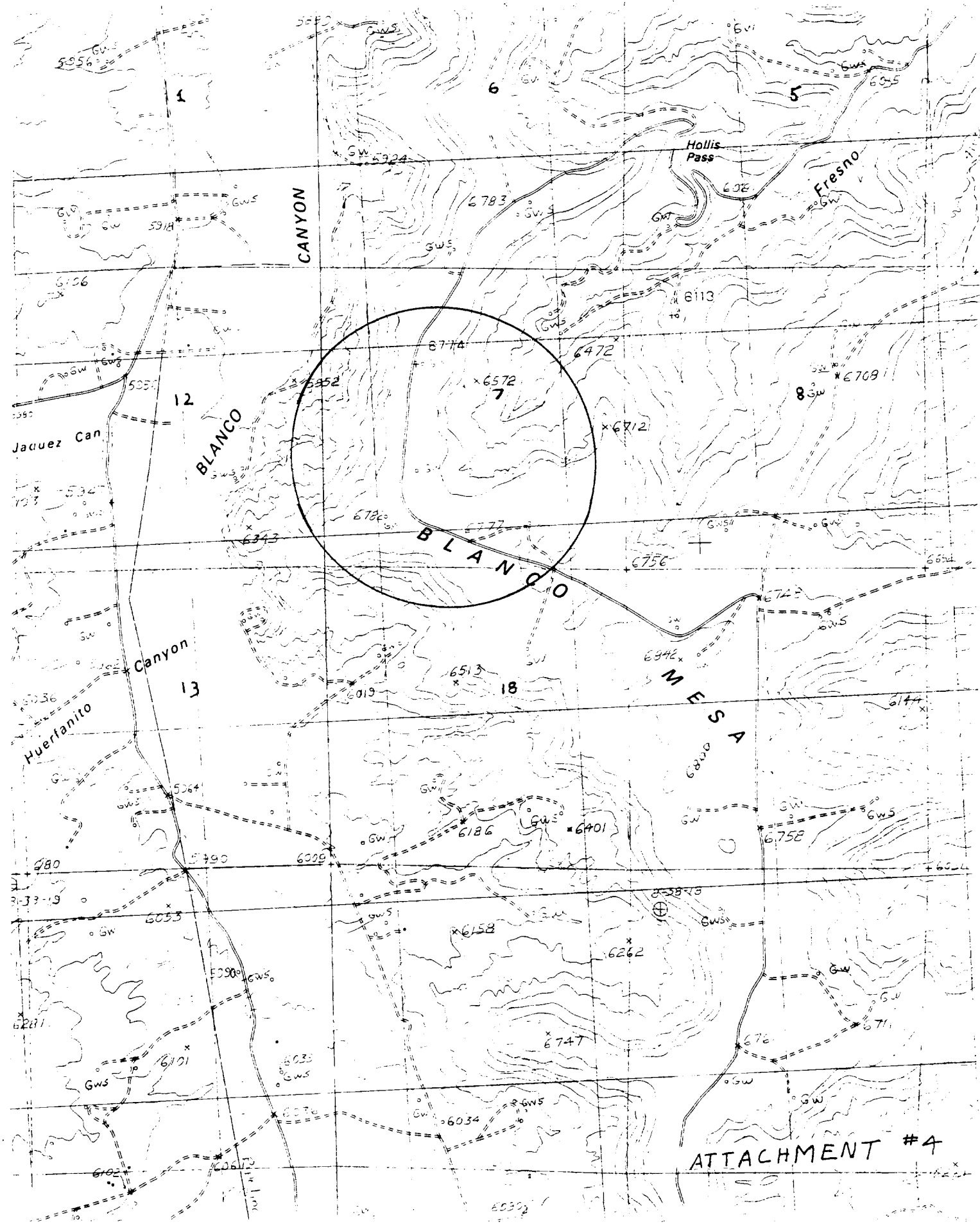
Collapse: 1.0

Tension: 1.8

Burst: 1.0

Cementing Program:

1. The 8-5/8" surface casing will be cemented to the surface with 175 sacks of class "B" cement with 2% CaCl<sub>2</sub> and 1/4# per sack flocele.
2. The 4-1/2" production casing will be cemented in 2 stages with the DV tool set at 2600'. 1st stage will be cemented with 85 sacks class "H" cement with .95% Flo-Lock-1, 18% Thrifty Lite, 3% KCL, 3# Hi-seal.  
2nd stage will be cemented with 325 sacks pacesetter lite with 6% gel, 1/3# cello-seal. .8% CF-1, 3# Hi-seal followed with 50 sacks class "C" cement. Actual cement volumes will be calculated from open hole logs and will be designed to circulate to surface.



ATTACHMENT #4