

UNITED STATES
DEPARTMENT OF THE INTERIOR
BUREAU OF LAND MANAGEMENT

APPLICATION FOR PERMIT TO DRILL, DEEPEN, OR PLUG BACK

1a. TYPE OF WORK DRILL ☒ DEEPEN ☐ PLUG BACK ☐

b. TYPE OF WELL
OIL WELL ☐ GAS WELL ☒ OTHER ☐
SINGLE ZONE ☒ MULTIPLE ZONE ☐

2. NAME OF OPERATOR
Bonneville Fuels Corporation

3. ADDRESS OF OPERATOR
1600 Broadway, Suite 1110, Denver, CO 80202

4. LOCATION OF WELL (Report location clearly and in accordance with any State requirements.)
At surface 1850' FWL & 1190' FNL

At proposed prod. zone
same

11. DISTANCE IN MILES AND DIRECTION FROM NEAREST TOWN OR POST OFFICE*
10 miles south of Bloomfield, New Mexico

10. DISTANCE FROM PROPOSED*
LOCATION TO NEAREST
PROPERTY OR LEASE LINE, FT.
(Also to nearest drg. unit line, if any) 3430

16. NO. OF ACRES IN LEASE
2560

17. NO. OF ACRES ASSIGNED
TO THIS WELL
160

18. DISTANCE FROM PROPOSED LOCATION*
TO NEAREST WELL, DRILLING, COMPLETED,
OR APPLIED FOR, ON THIS LEASE, FT. 1580

19. PROPOSED DEPTH
2175

20. ROTARY OR CABLE TOOLS

Rotary

21. ELEVATIONS (Show whether DF, RT, GR, etc.)

6216' GR

22. APPROX. DATE WORK WILL START*

October 1, 1990

23. PROPOSED CASING AND CEMENTING PROGRAM

SIZE OF HOLE	SIZE OF CASING	WEIGHT PER FOOT	SETTING DEPTH	QUANTITY OF CEMENT
12 1/4	8 5/8	24#	+ 300'	250 sx (Circ to surf)
7 7/8	4 1/2	11.60#	+ 2175'	375 sx (Circ to surf)

Exhibits Attached:

Ten Point Compliance Program

Surface Use & Operation Plan

Exhibit 1 Blowout Preventer

" 2 Location & Elevation

" 3 Vicinity Map

" 4 One Mile Radius Map

" 5 Topography & Pad Layout

" 6 Cross Sections & Volumes

" 7 Rig Layout

Exhibit 8 Production Facility Layout

RECEIVED
SEP 27 1990
OIL CON. DIV.
DIST. 3

IN ABOVE SPACE DESCRIBE PROPOSED PROGRAM: If proposal is to deepen or plug back, give data on present productive zone and proposed new productive zone. If proposal is to drill or deepen directionally, give pertinent data on subsurface locations and measured and true vertical depths. Give blowout preventer program, if any.

24. SIGNED Donald D. Lundy TITLE Operations Supervisor DATE 7/31/90

(This space for Federal or State office use)

PERMIT NO. _____ APPROVAL DATE _____

APPROVED BY _____ TITLE _____
CONDITIONS OF APPROVAL, IF ANY:

*See Instructions On Reverse Side

Submit to Appropriate
District Office
State Lease - 4 copies
Fee Lease - 3 copies

State of New Mexico
Energy, Minerals and Natural Resources Department

OIL CONSERVATION DIVISION

P.O. Box 2088
Santa Fe, New Mexico 87504-2088

Form C-102
Revised 1-1-89

DISTRICT I
P.O. Box 1980, Hobbs, NM 88240

DISTRICT II
P.O. Drawer DD, Artesia, NM 88210

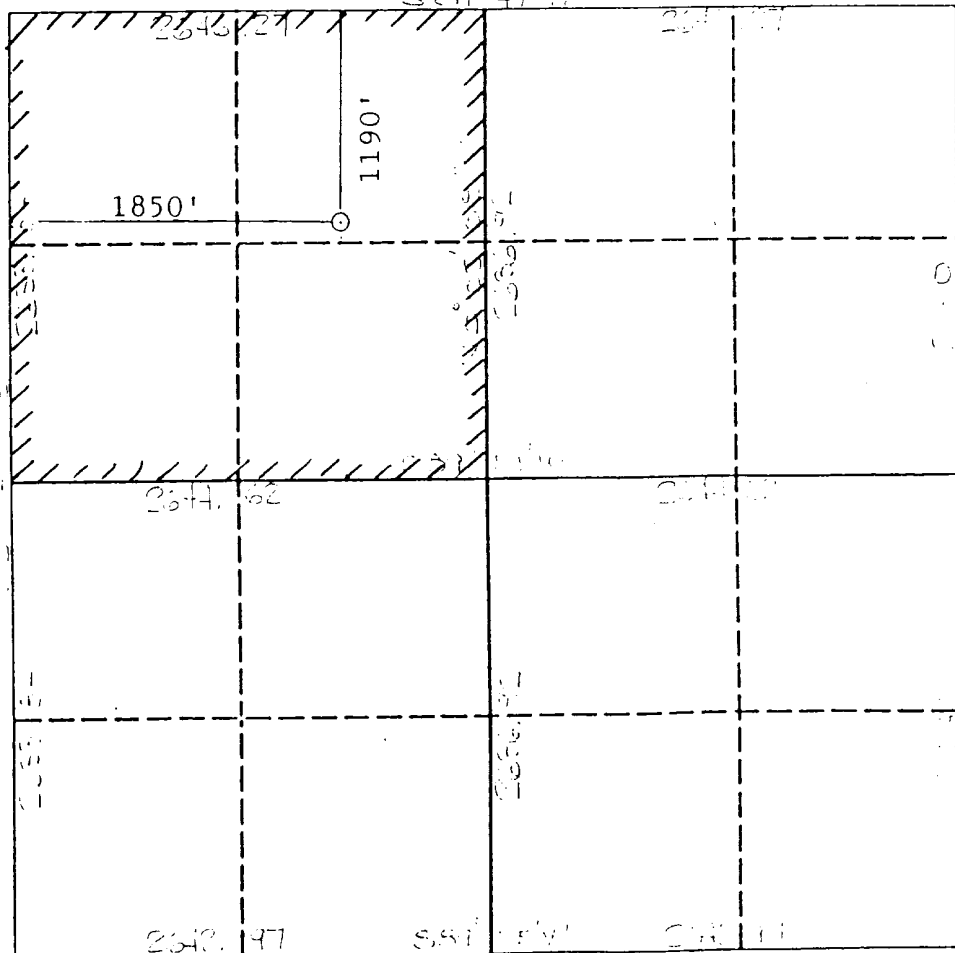
DISTRICT III
1000 Rio Brazos Rd., Aztec, NM 87410

WELL LOCATION AND ACREAGE DEDICATION PLAT

All Distances must be from the outer boundaries of the section

Operator BONNEVILLE FUELS CORPORATION			Lease SCOTT "E" FEDERAL		Well No. 12
Unit Letter C	Section 24	Township 27N	Range 11W	County NMPM	San Juan
Actual Footage Location of Well: 1190 feet from the NORTH line and 1850 feet from the WEST line					
Ground level Elev. 6216	Producing Formation PC		Pool W. Katz	Dedicated Acreage: 1.65 Acres	
<p>1. Outline the acreage dedicated to the subject well by colored pencil or hatchure marks on the plat below.</p> <p>2. If more than one lease is dedicated to the well, outline each and identify the ownership thereof (both as to working interest and royalty).</p> <p>3. If more than one lease of different ownership is dedicated to the well, have the interest of all owners been consolidated by communitization, unitization, force pooling, etc.? <input type="checkbox"/> Yes <input type="checkbox"/> No If answer is "yes" type of consolidation _____</p> <p>If answer is "no" list the owners and tract descriptions which have actually been consolidated. (Use reverse side of this form if necessary.)</p> <p>No allowable will be assigned to the well until all interests have been consolidated (by communitization, unitization, forced-pooling, or otherwise) or until a non-standard unit, eliminating such interest, has been approved by the Division.</p>					

RECEIVED
SEP 27 1990
OIL CON. DIV.
DIST. 3



OPERATOR CERTIFICATION
I hereby certify that the information contained herein is true and complete to the best of my knowledge and belief.
Gerald D. Gentry
Signature
Gerald D. Gentry
Printed Name
Operations Supervisor
Position
Bonneville Fuels Corp.
Company
July 31, 1990
Date

SURVEYOR CERTIFICATION
I hereby certify that the well location shown on this plat was plotted from field notes of actual surveys made by me or under my supervision, and that the same is true and correct to the best of my knowledge and belief.
Date Surveyed
SEP 11 1990
Signature of Registered Professional Surveyor
Cecilia B. Tulia
Cecilia B. Tulia
Certificate No.
9672

