

UNITED STATES  
DEPARTMENT OF THE INTERIOR  
BUREAU OF LAND MANAGEMENT

9-145-21301

APPLICATION FOR PERMIT TO DRILL, DEEPEN, OR PLUG BACK

1a. TYPE OF WORK  
DRILL ☒ DEEPEN ☐ PLUG BACK ☐

b. TYPE OF WELL  
OIL WELL ☐ GAS WELL ☒ OTHER ☐  
SINGLE ZONE ☒ MULTIPLE ZONE ☐

2. NAME OF OPERATOR

Bonneville Fuels Corporation

3. ADDRESS OF OPERATOR

1600 Broadway, Suite 1110, Denver, CO 80202

4. LOCATION OF WELL (Report location clearly and in accordance with any State requirements.)  
At SURFACE 1850' FNL & 1695' FWL

At proposed prod. zone same

14. DISTANCE IN MILES AND DIRECTION FROM NEAREST TOWN OR POST OFFICE\*

10 miles south of Bloomfield, New Mexico

15. DISTANCE FROM PROPOSED\*  
LOCATION TO NEAREST  
PROPERTY OR LEASE LINE, FT. 1695'  
(Also to nearest drg. unit line, if any)

16. NO. OF ACRES IN LEASE  
2560

17. NO. OF ACRES ASSIGNED  
TO THIS WELL 160

18. DISTANCE FROM PROPOSED LOCATION\*  
TO NEAREST WELL, DRILLING, COMPLETED,  
OR APPLIED FOR, ON THIS LEASE, FT. 1900'

19. PROPOSED DEPTH  
2100'

20. ROTARY OR CABLE TOOLS

Rotary

21. ELEVATIONS (Show whether DF, RT, GR, etc.)

6547

22. APPROX. DATE WORK WILL START\*

October 1, 1990

23. PROPOSED CASING AND CEMENTING PROGRAM					QUANTITY OF CEMENT ATTACHED
SIZE OF HOLE	SIZE OF CASING	WEIGHT PER FOOT	SETTING DEPTH		
12 1/4	8 5/8	24#	+ 300'	250 sx	(Circ to surf)
7 7/8	4 1/2	11.60#	+ 2100'	500 sx	(Circ to surf)

Exhibits Attached:

Exhibit 8 Production Facility Layout

Ten Point Compliance Program

Surface Use & Operation Plan

Exhibit 1 Blowout Preventer

- " 2 Location & Elevation
- " 3 Vicinity Map
- " 4 One Mile Radius Map
- " 5 Topography & Pad Layout
- " 6 Cross Sections & Volumes
- " 7 Rig Layout

RECEIVED  
SEP 27 1990  
OIL CON. DIV  
DIST. 3

IN ABOVE SPACE DESCRIBE PROPOSED PROGRAM: If proposal is to deepen or plug back, give data on present productive zone and proposed new productive zone. If proposal is to drill or deepen directionally, give pertinent data on subsurface locations and measured and true vertical depths. Give blowout preventer program, if any.

24.

SIGNED James P. Smith TITLE Operations Supervisor DATE August 2, 1990

(This space for Federal or State office use)

PERMIT NO. \_\_\_\_\_ APPROVAL DATE \_\_\_\_\_

APPROVED BY \_\_\_\_\_ TITLE \_\_\_\_\_

CONDITIONS OF APPROVAL, IF ANY:

NMOCD

\*See Instructions On Reverse Side

Submit to Appropriate  
District Office  
State Lease - 4 copies  
Fee Lease - 3 copies

State of New Mexico  
Energy, Minerals and Natural Resources Department

Form C-102  
Revised 1-1-89

OIL CONSERVATION DIVISION

P.O. Box 2088  
Santa Fe, New Mexico 87504-2088

DISTRICT I

P.O. Box 1980, Hobbs, NM 88240

DISTRICT II

P.O. Drawer DD, Artesia, NM 88210

DISTRICT III

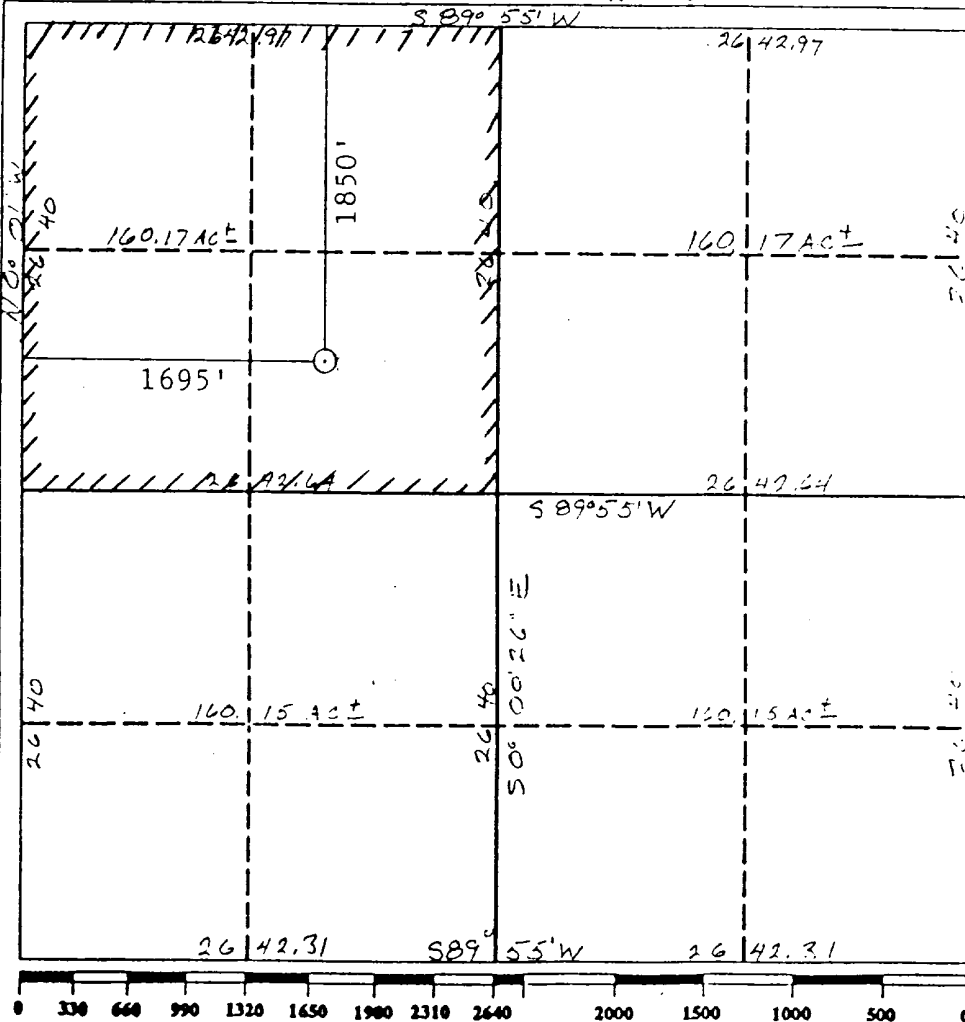
1000 Rio Brazos Rd., Aztec, NM 87410

WELL LOCATION AND ACREAGE DEDICATION PLAT

All Distances must be from the outer boundaries of the section

Operator BONNEVILLE FUELS CORP.			Lease SCOTT "E" FEDERAL 2		Well No. 25-22
Unit Letter F	Section 25	Township 27 N	Range 11 W	County NMPM San Juan	
Actual Footage Location of Well: 1850 feet from the North line and 1695 feet from the West line					
Ground level Elev. 6249	Producing Formation P.C.		Pool W. Kutz	Dedicated Acreage: 2 Acres	

1. Outline the acreage dedicated to the subject well by colored pencil or hatchure marks on the plat below.
2. If more than one lease is dedicated to the well, outline each and identify the ownership thereof (both as to working interest and royalty).
3. If more than one lease of different ownership is dedicated to the well, have the interest of all owners been consolidated by communitization, unitization, force-pooling, etc.?  
☐ Yes ☐ No If answer is "yes" type of consolidation \_\_\_\_\_  
If answer is "no" list the owners and tract descriptions which have actually been consolidated. (Use reverse side of this form if necessary.)  
No allowable will be assigned to the well until all interests have been consolidated (by communitization, unitization, forced-pooling, or otherwise) or until a non-standard unit, eliminating such interest, has been approved by the Division.



OPERATOR CERTIFICATION

I hereby certify that the information contained herein is true and complete to the best of my knowledge and belief.

Signature

*Gerald D. Gentry*

Printed Name

Gerald D. Gentry

Position

Operations Supervisor

Company

Bonneville Fuels Corp.

Date

August 2, 1990

SURVEYOR CERTIFICATION

I hereby certify that the well location shown on this plat was plotted from field notes of actual surveys made by me or under my supervision, and that the same is true and correct to the best of my knowledge and belief.

Date Surveyed

July 24, 1990

Signature

Professional Surveyor

NEW MEXICO

REGISTERED PROFESSIONAL LAND SURVEYOR

9672

Certificate No.

9672