

~~REVISED APPLICATION~~
UNITED STATES
DEPARTMENT OF THE INTERIOR
BUREAU OF LAND MANAGEMENT

SUBMIT IN TRIPLICATE*
(Other instructions on
reverse side)

30-045-28356
Form approved.
Budget Bureau No. 1004-0136
Expires August 31, 1985

APPLICATION FOR PERMIT TO DRILL, DEEPEN, OR PLUG BACK

1a. TYPE OF WORK

DRILL ☒

DEEPEN ☐

PLUG BACK ☐

b. TYPE OF WELL

OIL
WELL ☐

GAS
WELL ☒

OTHER

SINGLE
ZONE ☒

MULTIPLE
ZONE ☐

2. NAME OF OPERATOR

Bonneville Fuels Corporation

3. ADDRESS OF OPERATOR

1600 Broadway, Suite 1110, Denver, CO 80202

4. LOCATION OF WELL (Report location clearly and in accordance with any State requirements.)

At surface

2420' FSL, 1995' FEL

At proposed prod. zone

same

14. DISTANCE IN MILES AND DIRECTION FROM NEAREST TOWN OR POST OFFICE*

10 miles south of Bloomfield, New Mexico

16. DISTANCE FROM PROPOSED*

LOCATION TO NEAREST

PROPERTY OR LEASE LINE, FT.

(Also to nearest drig. unit line, if any) 4500

18. DISTANCE FROM PROPOSED LOCATION*

TO NEAREST WELL, DRILLING, COMPLETED,

OR APPLIED FOR, ON THIS LEASE, FT.

±1900

16. NO. OF ACRES IN LEASE

2560

19. PROPOSED DEPTH

2075'

17. NO. OF ACRES ASSIGNED

TO THIS WELL

20. ROTARY OR CABLE TOOLS

Rotary

21. ELEVATIONS (Show whether DF, RT, GR, etc.)

6101 GR

22. APPROX. DATE WORK WILL START*

October 1, 1990

23. PROPOSED CASING AND CEMENTING PROGRAM

DRILLING OPERATIONS AUTHORIZED ARE
SUBJECT TO COMPLIANCE WITH ATTACHED
"GENERAL REQUIREMENTS"

SIZE OF HOLE	SIZE OF CASING	WEIGHT PER FOOT	SETTING DEPTH	
12 1/4	8 5/8	24#	+ 300'	250 sx (Circ to surf)
7 7/8	4 1/2	11.60#	+ 2075'	500 sx (Circ to surf)

Exhibits Attached:

Exhibit 8 Production Facility Layout

Ten Point Compliance Program

Surface Use & Operation Plan

Exhibit 1 Blowout Preventer

" 2 Location & Elevation

" 3 Vicinity Map

" 4 One Mile Radius Map

" 5 Topography & Pad Layout

" 6 Cross Sections & Volumes

" 7 Rig Layout

RECEIVED
OCT 25 1990
OIL CON. DIV.
DIST. 3

IN ABOVE SPACE DESCRIBE PROPOSED PROGRAM: If proposal is to deepen or plug back, give data on present productive zone and proposed new productive zone. If proposal is to drill or deepen directionally, give pertinent data on subsurface locations and measured and true vertical depths. Give blowout preventer program, if any.

24.

SIGNED

[Signature]

TITLE Operations Supervisor

DATE August 20, 1990

(This space for Federal or State office use)

AS AMENDED

PERMIT NO.

APPROVAL DATE

APPROVED BY

TITLE

CONDITIONS OF APPROVAL, IF ANY:

NMOCD

OCT 23 1990

[Signature]
AREA MANAGER

NFL-2889 @

*See Instructions On Reverse Side

Submit to Appropriate
District Office
State Lease - 4 copies
Fee Lease - 3 copies

DISTRICT I
P.O. Box 1980, Hobbs, NM 88240

DISTRICT II
P.O. Drawer DD, Artesia, NM 88210

DISTRICT III
1000 Rio Brazos Rd., Aztec, NM 87410

State of New Mexico
Energy, Minerals and Natural Resources Department

OIL CONSERVATION DIVISION

P.O. Box 2088
Santa Fe, New Mexico 87504-2088

RECEIVED

OCT 25 1990

OIL CON. DIV.
DIST. 3

Form C-102
Revised 1-1-89

WELL LOCATION AND ACREAGE DEDICATION PLAT

All Distances must be from the outer boundaries of the section

Operator BONNEVILLE FUELS CORPORATION			Lease FULLERTON FEDERAL 14		Well No. 14-33
Unit Letter J	Section 14	Township 27N	Range 11W	County NMPM San Juan	
Actual Footage Location of Well: 2420 feet from the South line and 1995 feet from the East line					
Ground level Elev. 6101		Producing Formation 16C		Pool W K 43	
Dedicated Acreage: 160 Acres					

1. Outline the acreage dedicated to the subject well by colored pencil or hatchure marks on the plat below.
2. If more than one lease is dedicated to the well, outline each and identify the ownership thereof (both as to working interest and royalty).
3. If more than one lease of different ownership is dedicated to the well, have the interest of all owners been consolidated by communitization, unitization, force-pooling, etc.?
☐ Yes ☐ No If answer is "yes" type of consolidation _____
If answer is "no" list the owners and tract descriptions which have actually been consolidated. (Use reverse side of this form if necessary.) _____
No allowable will be assigned to the well until all interests have been consolidated (by communitization, unitization, forced-pooling, or otherwise) or until a non-standard unit, eliminating such interest, has been approved by the Division.

OPERATOR CERTIFICATION

I hereby certify that the information contained herein is true and complete to the best of my knowledge and belief.

Signature

Gerald D. Gentry

Printed Name

Gerald D. Gentry

Position

Operations Supervisor

Company

Bonneville Fuels Corporation

Date

August 20, 1990

SURVEYOR CERTIFICATION

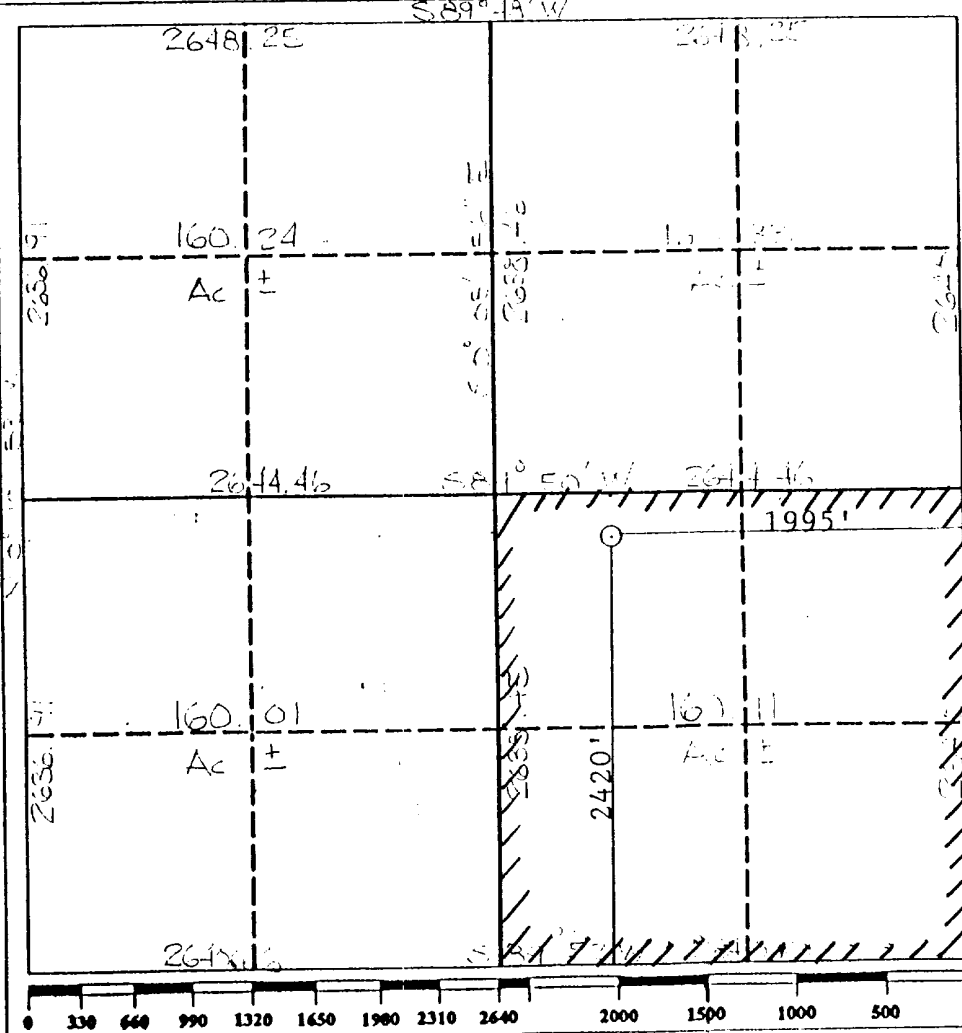
I hereby certify that the well location shown on this plat was plotted from field notes of actual surveys made by me or under my supervision, and that the same is true and correct to the best of my knowledge and belief.

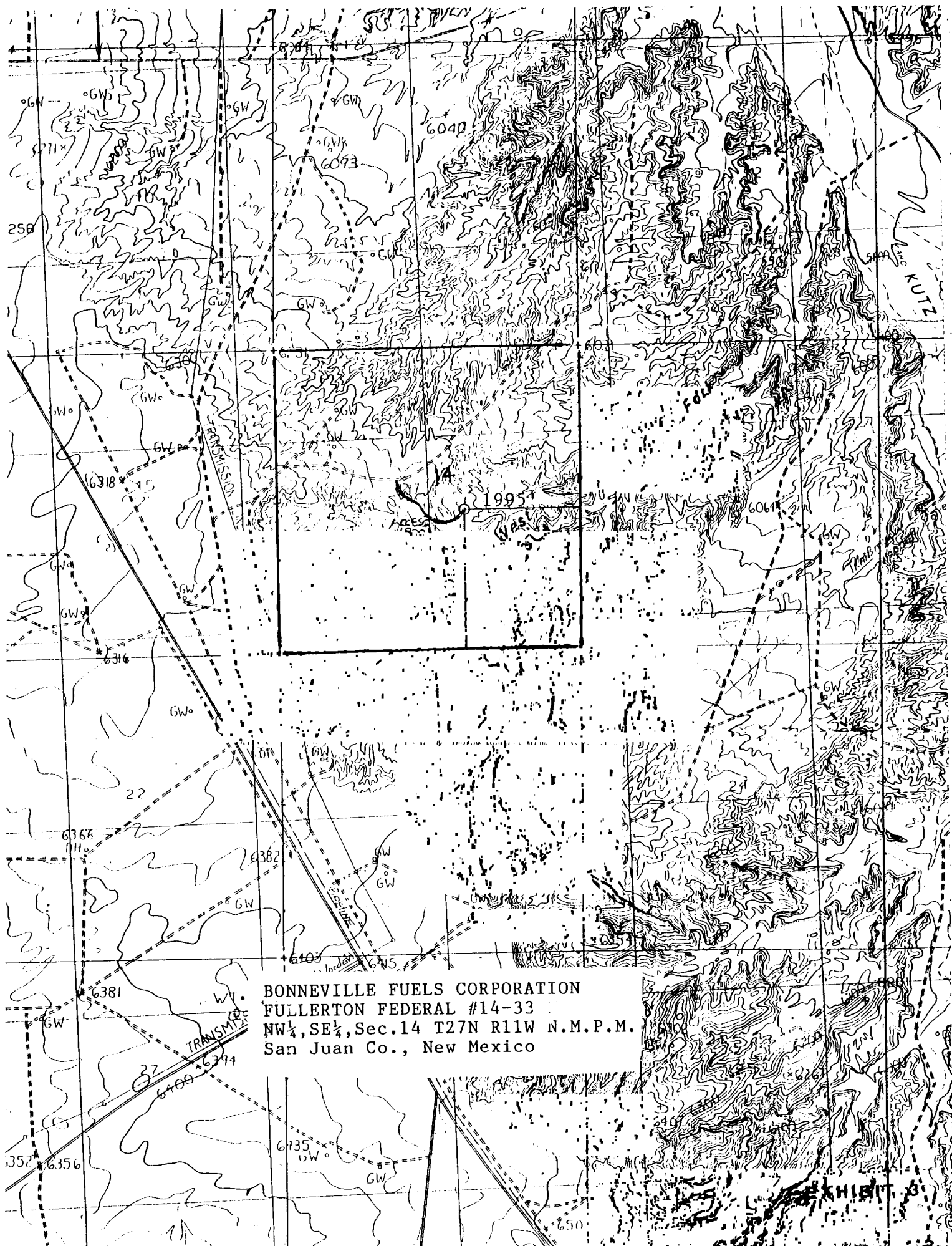
August 3, 1990

Date Surveyed

Signature *Cecil B. Tullis*
Professional Surveyor

Cecil B. Tullis
REGISTERED PROFESSIONAL LAND SURVEYOR
Certificate No. 18572





BONNEVILLE FUELS CORPORATION
FULLERTON FEDERAL #14-33
NW $\frac{1}{4}$, SE $\frac{1}{4}$, Sec. 14 T27N R11W N.M.P.M.
San Juan Co., New Mexico

EXHIBIT 3



STATE OF NEW MEXICO
ENERGY, MINERALS AND NATURAL RESOURCES DEPARTMENT
OIL CONSERVATION DIVISION

*no Apd
10-19-90*

GARREY CARRUTHERS
GOVERNOR

POST OFFICE BOX 2088
STATE LAND OFFICE BUILDING
SANTA FE, NEW MEXICO 87504
(505) 827-5800

October 11, 1990

Bonneville Fuels Corporation
1600 Broadway, Suite 1110
Denver, CO 80202

Attention: L.D. Lillo

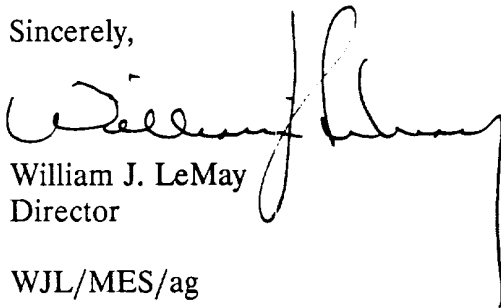
Administrative Order NSL-2889

Dear Lillo:

Reference is made to your application dated August 28, 1990 for a non-standard gas well location for your Fullerton Federal "33" Well No. 14 to be located 2420 feet from the South line and 1995 feet from the East line (Unit J) of Section 14, Township 27 North, Range 11 West, NMPM, West Kutz Pictured Cliffs Pool, San Juan County, New Mexico. The SE/4 of said Section 14 shall be dedicated to the well forming a standard 160-acre gas spacing and proration unit.

By the authority granted me under the provisions of General Rule 104F.I. the above-described unorthodox gas well location is hereby approved.

Sincerely,



William J. LeMay
Director

WJL/MES/ag

cc: Oil Conservation Division - Aztec
US Bureau of Land Management - Farmington





STATE OF NEW MEXICO
ENERGY AND MINERALS DEPARTMENT
OIL CONSERVATION DIVISION
AZTEC DISTRICT OFFICE

GARREY CARRUTHERS
GOVERNOR

1000 RIO BRAZOS ROAD
AZTEC, NEW MEXICO 87410
(505) 334-6178

Date: 10-2-90

*A TTN: Mike
Stogner*

Oil Conservation Division
P.O. Box 2088
Santa Fe, NM 87504-2088

Re: Proposed EC _____
Proposed DHC _____
Proposed NSL X _____
Proposed SWD _____
Proposed WFX _____
Proposed PMX _____

Gentlemen:

I have examined the application dated 8-30-90
for the Gannett Fuels Corp. Fullerton Fed. 14# 33
Operator Lease & Well No.

J-14-27N-11W and my recommendations are as follows:
Unit, S-T-R

Approve

Yours truly,

Ernie Bush

Overnight Mail

Bonneville Fuels Corporation

A Subsidiary of Bonneville Pacific Corporation

August 28, 1990

Mr. Michael Stogner
New Mexico Oil Conservation Division
P. O. Box 2088
Santa Fe, NM 87503

Re: Fullerton Federal #14-33 Well
2420' FSL, 199' FEL
Section 14, T27N-R11W
San Juan County, New Mexico

RECEIVED
AUG 30 1990
OIL CON. DIV
DIST. 3

Gentlemen:

Bonneville Fuels Corporation hereby respectfully requests administrative approval for the captioned non-standard gas well location in the Pictured Cliffs Pool. This request is submitted in triplicate and is due to the extreme nature of the topography and the fragile soil conditions found within the legal well location windows according to New Mexico Oil Conservation Division Rules.

To address each requirement regarding the "Submittal Guidelines for Administrative Approval of Non-Standard Location Applications" (copy enclosed), Bonneville submits herewith the following for your approval of the subject non-standard location:

- I. The well is located on BLM Surface. Copy of Application for Permit to Drill package enclosed.
- II. C-102 enclosed
- III. A. Land plat enclosed
B. Certification enclosed
- IV. A. & B. Shown on enclosed topo map.
C. Existing well pads are shown on enclosed topo map. The closest pad is approximately 1900' away and with a projected 2075' TD. The use of such a pad is impractical.
- V. Enlarged topo map enclosed
A. Badlands type topography within circled area which encompasses all orthodox windows. The terrain is very steep with unstable clay and sandy soils.
B. Access roads to unorthodox location would also traverse rough terrain as displayed in IV A.
C. N/A
D. N/A
E. Rough terrain as per V. A.
- VI. N/A

New Mexico Oil Conservation Division
August 28, 1990
Page 2

VII. See V. A. above and orthodox windows were rejected by the BLM Farmington Resource Area.

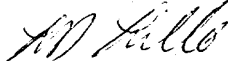
VIII. In order to reach a legal location, the well would have a bottom hole location approximately 400' to the southeast. Drilling cost would increase approximately 25 - 30% which would render this well economically unfeasible.

IX. Copy of affidavit enclosed. No offset owner/operator notification required.

If you have any questions or require anything further, please contact the undersigned at (303) 863-1555.

Very truly yours,

BONNEVILLE FUELS CORPORATION



L. D. Lillo
Senior Landman

cc/Oil Conservation Division
1000 Rio Brazos
Aztec, NM 87410

Submit to Appropriate
District Office
State Lease - 4 copies
Fee Lease - 3 copies

DISTRICT I
P.O. Box 1980, Hobbs, NM 88240

DISTRICT II
P.O. Drawer DD, Artesia, NM 88210

DISTRICT III
1000 Rio Brazos Rd., Aztec, NM 87410

State of New Mexico
Energy, Minerals and Natural Resources Department

OIL CONSERVATION DIVISION

P.O. Box 2088
Santa Fe, New Mexico 87504-2088

Form C-102
Revised 1-1-89

RECEIVED

AUG 30 1990

OIL CON. DIV.
DIST. 3

WELL LOCATION AND ACREAGE DEDICATION PLAT

All Distances must be from the outer boundaries of the section

Operator BONNEVILLE FUELS CORPORATION			Lease FULLERTON FEDERAL		Well No. 14-33
Unit Letter J	Section 14	Township 27N	Range 11W	County NMPM	San Juan
Actual Footage Location of Well: 2420 feet from the South line and 1995 feet from the East line					
Ground level Elev. 6101	Producing Formation			Dedicated Acreage: Acres	

- Outline the acreage dedicated to the subject well by colored pencil or hatchure marks on the plat below.
- If more than one lease is dedicated to the well, outline each and identify the ownership thereof (both as to working interest and royalty).
- If more than one lease of different ownership is dedicated to the well, have the interest of all owners been consolidated by communitization, unitization, force pooling, etc.?
☐ Yes ☐ No If answer is "yes" type of consolidation _____
If answer is "no" list the owners and tract descriptions which have actually been consolidated. (Use reverse side of this form if necessary.)
No allowable will be assigned to the well until all interests have been consolidated (by communitization, unitization, forced pooling, or otherwise) or until a non-standard unit, eliminating such interest, has been approved by the Division.

OPERATOR CERTIFICATION

I hereby certify that the information contained herein is true and complete to the best of my knowledge and belief.

Signature

Gerald D. Gentry

Printed Name

Gerald D. Gentry

Position

Operations Supervisor

Company

Bonneville Fuels Corporation

Date

August 20, 1990

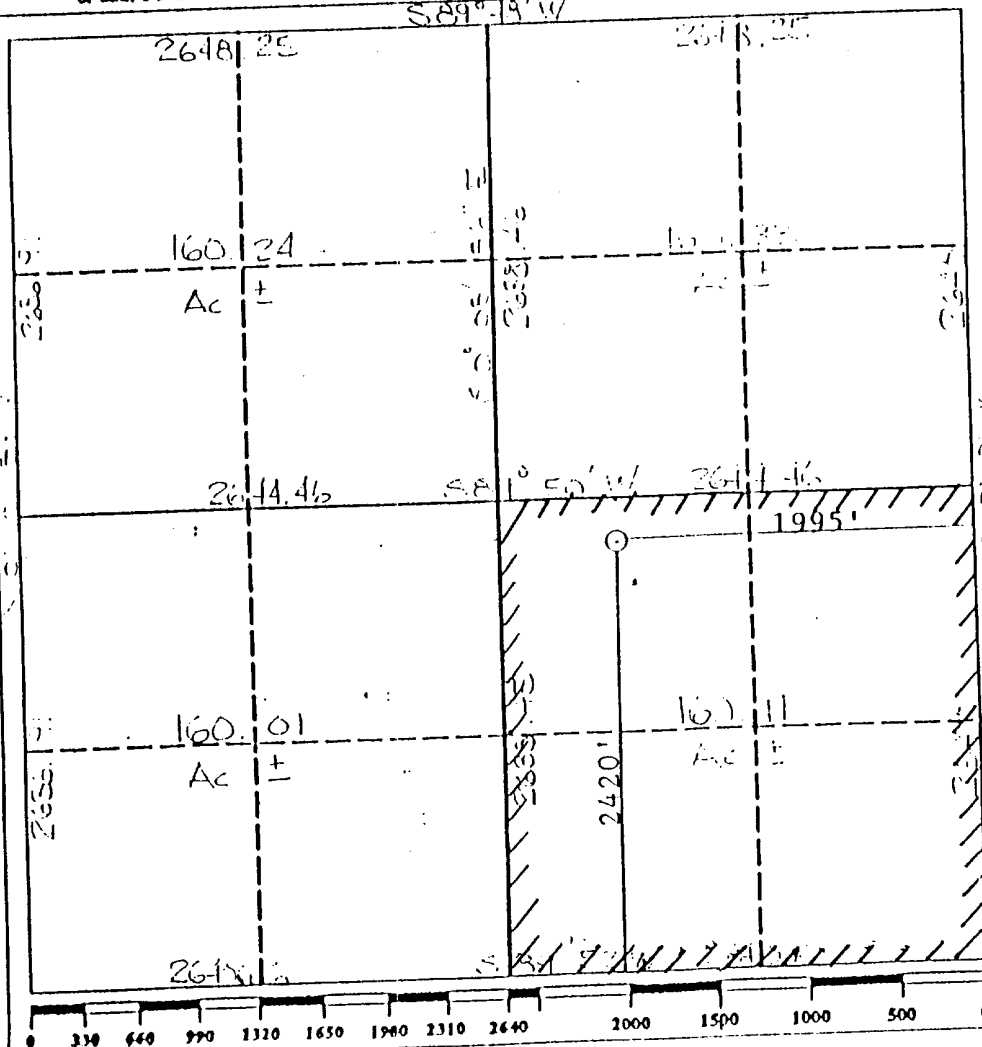
SURVEYOR CERTIFICATION

I hereby certify that the well location shown on this plat was plotted from field notes of actual surveys made by me or under my supervision, and that the same is true and correct to the best of my knowledge and belief.

August 3, 1990
Date Surveyed

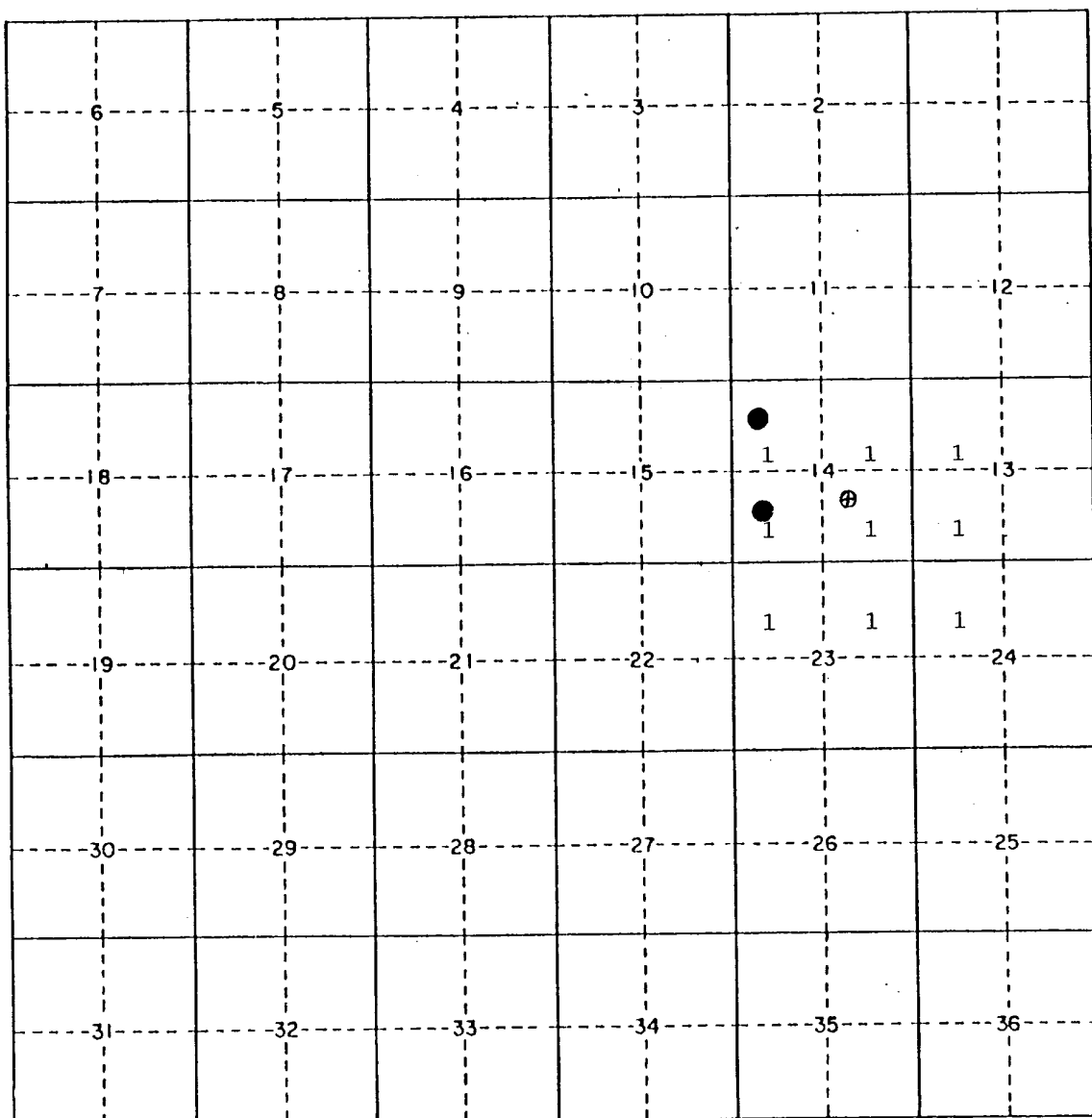
Signature
Professional Surveyor

Cecil B. Thomas
REGISTERED PROFESSIONAL LAND SURVEYOR
Certificate No. 2072



Fullerton Federal #14-33 Well

County San Juan State New Mexico



1. Bonneville Fuels Corporation

● Existing Pictured Cliffs Formation Wells

A detailed topographic map of a mountainous area, likely in the Colorado Rockies given the "KUTZ" label. The map features contour lines indicating elevation, with peaks reaching over 6000 feet. A grid system is overlaid, with section numbers like 27N and 11W visible. Key features include:

- EXISTING WELL PADS:** Indicated by black dots and arrows pointing to specific locations.
- PROPOSED FULLERTON FED. #14-33:** A large rectangular area outlined with a dashed border, containing four smaller squares labeled "West".
- 160 A. PRORATION UNIT:** A label pointing to a specific area within the proposed field.
- ORTHODOX WINDOWS:** A label pointing to a feature near the bottom right of the proposed field.
- TRANSMISSION LINE (Wooden):** A line running diagonally across the lower left portion of the map.
- HWY. #44:** A road running horizontally across the bottom of the map.
- N:** A north arrow pointing upwards.
- KUTZ:** A label on the right side of the map, possibly referring to Kutz Peak or a similar landmark.

The map also shows various spot elevations (e.g., 6093, 6040, 6231) and other geographical details like ridges and valleys.

11W

