

UNITED STATES
DEPARTMENT OF THE INTERIOR
GEOLOGICAL SURVEY

APPLICATION FOR PERMIT TO DRILL, DEEPEN, OR PLUG BACK

1a. TYPE OF WORK

DRILL ☒DEEPEN ☐PLUG BACK ☐

b. TYPE OF WELL

OIL
WELL ☐GAS
WELL ☒

OTHER

SINGLE
ZONE ☐MULTIPLE
ZONE ☐

2. NAME OF OPERATOR

Marathon Oil Company

3. ADDRESS OF OPERATOR

P. O. Box 552, Midland, TX 79702

4. LOCATION OF WELL (Report location clearly and in accordance with any State requirements.)*

At surface

1110' FNL & 1215' FEL

At proposed prod. zone

1110' FNL & 1215' FEL

14. DISTANCE IN MILES AND DIRECTION FROM NEAREST TOWN OR POST OFFICE*

12 miles south of Bloomfield, NM

15. DISTANCE FROM PROPOSED*

LOCATION TO NEAREST
PROPERTY OR LEASE LINE, FT.
(Also to nearest drlg. unit line, if any)

1215'

16. NO. OF ACRES IN LEASE

2560

17. NO. OF ACRES ASSIGNED

320 E/2

18. DISTANCE FROM PROPOSED LOCATION*
TO NEAREST WELL, DRILLING, COMPLETED,
OR APPLIED FOR, ON THIS LEASE, FT.

3924' *

19. PROPOSED DEPTH

2100'

20. ROTARY OR CABLE TOOLS

Rotary

21. ELEVATIONS (Show whether DF, RT, GR, etc.)

6446'

This action is subject to technical and
procedural review pursuant to 43 CFR 3165.3
and appeal pursuant to 43 CFR 3165.4.
PROPOSED CASING AND CEMENTING PROGRAM

22. APPROX. DATE WORK WILL START*

Dec. 1, 1990

23.

DRILLING OPERATIONS AUTHORIZED ARE
SUBJECT TO COMPLIANCE WITH ATTACHED
"GENERAL QUANTITY OF CEMENT"

SIZE OF HOLE	SIZE OF CASING	WEIGHT PER FOOT	SETTING DEPTH	"GENERAL QUANTITY OF CEMENT"
12-1/4"	8-5/8"	24#	350'	325 sx - circ to surface
7-7/8"	5-1/2"	15.5#	2100'	400 sx - circ to surface

Propose to drill to TD of $\pm 2100'$.

All casing will be run and cemented in accordance with regulations and by approved methods.

Blowout prevention equipment will be applied as outlined in Additional Information. See attached Multipoint Surface Use Plan and Additional Information for specific drilling operations.

* Distance to proposed well #35-2

IN ABOVE SPACE DESCRIBE PROPOSED PROGRAM: If proposal is to deepen or plug back, give data on present productive zone and proposed new productive zone. If proposal is to drill or deepen directionally, give pertinent data on subsurface locations and measured and true vertical depths. Give blowout prevention program, if any.

24.

SIGNED

(This space for Federal or State office use)

TITLE Drilling Superintendent

DATE 10-2-90

PERMIT NO.

APPROVAL DATE

APPROVED BY

CONDITIONS OF APPROVAL, IF ANY:

TITLE

NMOOD

APPROVED
AS AMENDED

NOV 08 1990

AREA MANAGER

*See Instructions On Reverse Side

Submit to Appropriate
District Office
State Lease - 4 copies
Fee Lease - 3 copies

State of New Mexico
Energy, Minerals and Natural Resources Department

Form C-102
Revised 1-1-89

OIL CONSERVATION DIVISION

P.O. Box 2088
Santa Fe, New Mexico 87504-2088

DISTRICT I
P.O. Box 1980, Hobbs, NM 88240

DISTRICT II
P.O. Drawer DD, Artesia, NM 88210

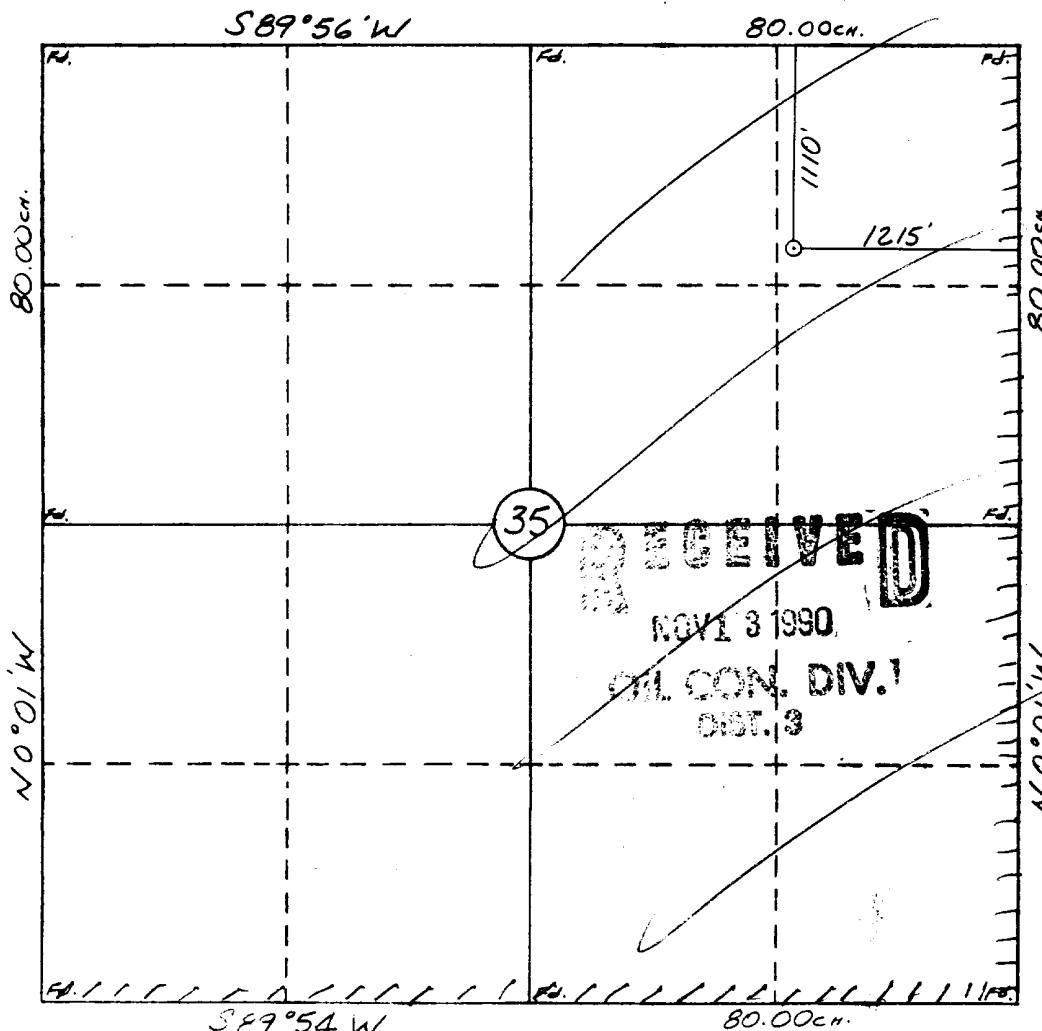
DISTRICT III
1000 Rio Brazos Rd., Aztec, NM 87410

WELL LOCATION AND ACREAGE DEDICATION PLAT

All Distances must be from the outer boundaries of the section

Operator MARATHON OIL COMPANY			Lease DOUTHIT FEDERAL 35		Well No. 35-1
Unit Letter A	Section 35	Township 27 N	Range 11 W	County San Juan	
Actual Footage Location of Well: 1110 feet from the North line and 1215 feet from the East line					
Ground level Elev. 6446	Producing Formation Fruitland Coal		Pool Basin Fruitland Coal	Dedicated Acreage: 320 Acres	
<p>1. Outline the acreage dedicated to the subject well by colored pencil or hatchure marks on the plat below.</p> <p>2. If more than one lease is dedicated to the well, outline each and identify the ownership thereof (both as to working interest and royalty).</p> <p>3. If more than one lease of different ownership is dedicated to the well, have the interest of all owners been consolidated by communitization, unitization, force-pooling, etc.?</p> <p><input type="checkbox"/> Yes <input type="checkbox"/> No If answer is "yes" type of consolidation _____</p> <p>If answer is "no" list the owners and tract descriptions which have actually been consolidated. (Use reverse side of this form if necessary.) _____</p> <p>No allowable will be assigned to the well until all interests have been consolidated (by communitization, unitization, forced-pooling, or otherwise) or until a non-standard unit, eliminating such interest, has been approved by the Division.</p>					

0 330 660 990 1320 1650 1980 2310 2640 2970 3300 3630 3960 4290 4620 4950 5280 5610 5940 6270 6600



OPERATOR CERTIFICATION

I hereby certify that the information contained herein is true and complete to the best of my knowledge and belief.

Signature

Printed Name

S. L. Atnipp

Position

Drilling Superintendent

Company

Marathon Oil Company

Date

10/2/90

SURVEYOR CERTIFICATION

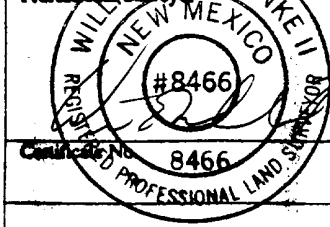
I hereby certify that the well location shown on this plat was plotted from field notes of actual surveys made by me or under my supervision, and that the same is true and correct to the best of my knowledge and belief.

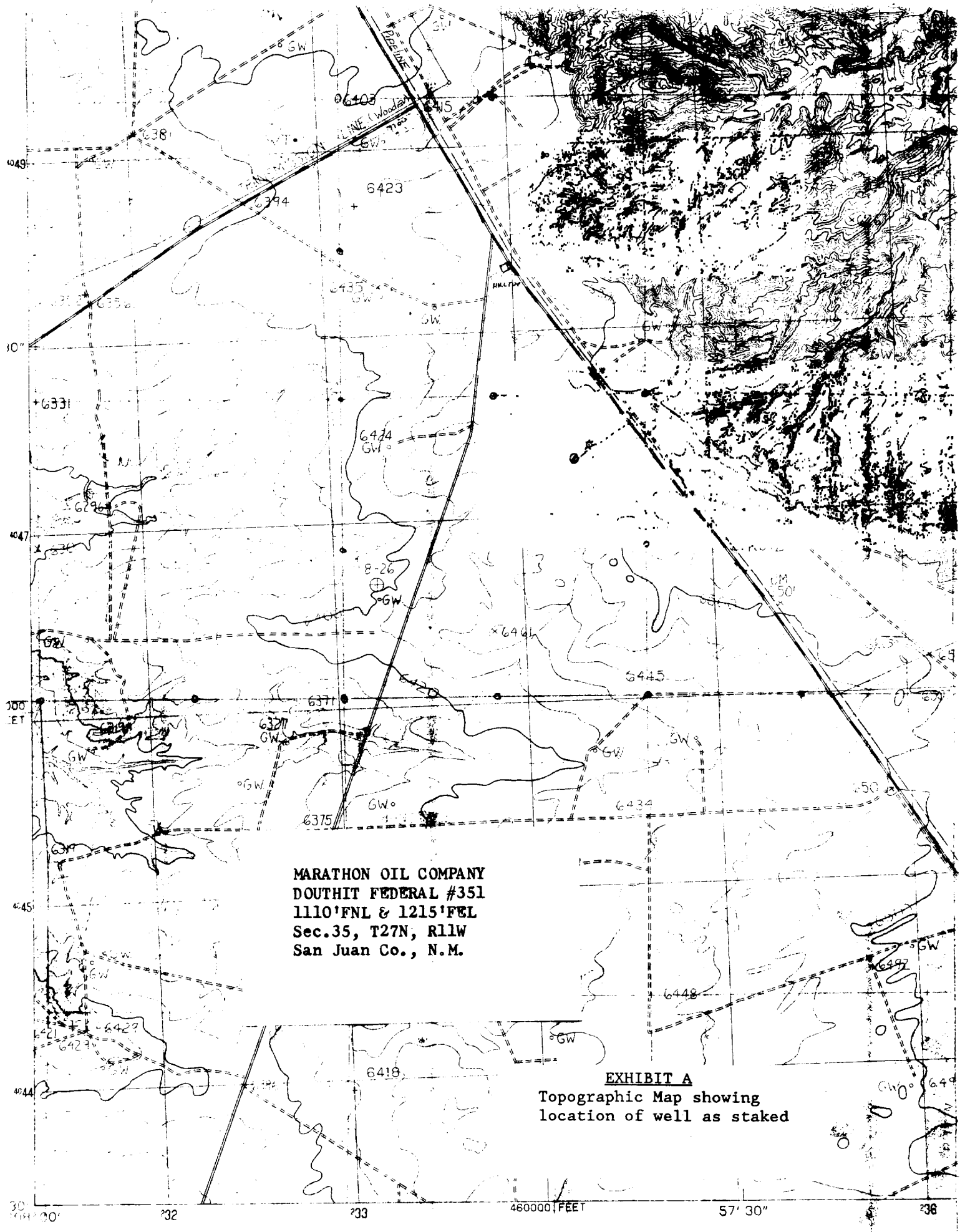
9-18-90

Date Surveyed

William B. Mahnke II

Signature & Seal of Professional Surveyor





MARATHON OIL COMPANY
DOUTHIT FEDERAL #351
1110'FNL & 1215'FEL
Sec.35, T27N, R11W
San Juan Co., N.M.

EXHIBIT A
Topographic Map showing
location of well as staked