

UNITED STATES
DEPARTMENT OF THE INTERIOR
BUREAU OF LAND MANAGEMENT

SUNDRY NOTICES AND REPORTS ON WELLS

1. TYPE OF WELL GAS	5. LEASE NUMBER SF-078092
2. OPERATOR MERIDIAN OIL INC.	6. IF INDIAN, ALL. OR TRIBE NAME
3. ADDRESS & PHONE NO. OF OPERATOR P O BOX 4289 FARMINGTON, NM 87499	7. UNIT AGREEMENT NAME
4. LOCATION OF WELL 1110'FNL 1215'FEL	8. FARM OR LEASE NAME DOUTHIT FEDERAL
	9. WELL NO. 351
	10. FIELD, POOL, OR WILDCAT BASIN FRUITLAND COAL
	11. SEC. T. R. M OR BLK. SEC. 35 T27N R11W NMPM
14. PERMIT NO.	12. COUNTY SAN JUAN
15. ELEVATIONS 6446'GL	13. STATE NM

16. SUBSEQUENT REPORT OF: Amended Application for Permit to Drill

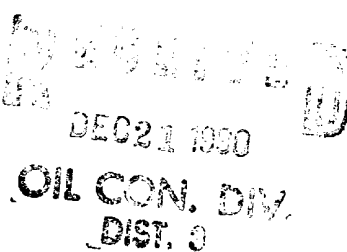
17. Describe proposed or completed operations

Reference is made to Marathon Oil's permit to drill the Douthit Federal #35-1 submitted 10-02-90 and approved 11-08-90.

Meridian Oil Inc. will operate and drill this well as the Douthit Federal #351 at 1110'FNL and 1215'FEL of Section 35 of Township 27N and Range 11W.

Submitted for review:

- Operations Plan
- BOP Diagrams
- Facilities Diagram



APPROVED

DEC 17 1990

AREA MANAGER

18. AUTHORIZED BY: Regulatory Affairs
REGULATORY AFFAIRS

12-5-90
DATE

NOTE: THIS FORMAT IS ISSUED IN LIEU OF US BLM FORM 3160-5.

=====
(This space for Federal or State office use)

APPROVED BY _____ TITLE _____ DATE _____
CONDITION OF APPROVAL, IF ANY:

184000

Well Name: 351 DOUTHIT FEDERAL 1110'FNL 1215'FEL
 Sec. 35 T27N R11W SAN JUAN NEW MEXICO
 BASIN FRUITLAND COAL Elevation 6446'GL

Formation tops: Surface- NACIMIENTO
 Ojo Alamo- 947
 Kirtland- 1070
 Fruitland- 1810
 Pictured Cliffs- 2000

Total Depth- 2000

Logging Program: Mud logs from 1810 to total depth.

Mud Program:	Interval	Type	Weight	Visc.	Fl. Loss
	0 - 200	Spud	8.4 - 8.9	40-50	no contro
	200 - 2000	Non-dispersed	8.4 - 9.5	30-60	no contro

Casing Program:	Hole Size	Depth Interval	Csg. Size	Weight	Grade
	12 1/4"	0 - 200	8 5/8"	24.0#	K-55
	7 7/8"	0 - 2000	5 1/2"	15.5#	K-55
Tubing Program:		0 - 2000	2 3/8"	4.7#	J-55

Float Equipment: 8 5/8" surface casing - saw tooth guide shoe. Centralizers will be run in accordance with Onshore Order #2.

5 1/2" production casing - float shoe on bottom. Three centralizers run every other joint above shoe. Two turbolizing type centralizers - one below and one into the base of the Ojo Alamo @ 1070'. Standard centralizers thereafter every fourth joint up to the base of the surface pipe.

Wellhead Equipment: 8 5/8" x 5 1/2" x 2 3/8" x 11" 3000 psi xmas tree assembl

Cementing:

8 5/8" surface casing - cement with 211 sacks of class "B" cement with 1/4# flocele/sack and 3% calcium chloride (248 cu ft. of slurry, 200% excess to circulate to surface). WOC 12 hours. Test casing to 600 psi for 30 minutes.

5 1/2" production casing - lead with 302 sacks of 65/35 class "B" poz with 6% gel, 2% calcium chloride and 1/2 cu.ft. Perlite/sack (10.3 gallons of water/sack) tail with 100 sacks of class "B" with 2% calcium chloride. 701 cu ft. of slurry, 100% excess to circulate to surface. If hole conditions permit, a 600 ft spacer will be run ahead of the cement slurry to avoid mud contamination of the cement. WOC 12 hours. If cement does not circulate to surface, a temperature log will be run after 8 hours to determine TOC.

BOP and Tests:

Surface to TD - 11" 2000 psi(minimum) double gate BOP stack (Reference Figure #1 and #2). Prior to drilling out surface casing, test rams to 600 psi for 30 minutes.

Completion - 6" 2000 psi(minimum) double gate BOP stack (Reference Figure #2). Prior to completion operations, test rams to 3000 psi for 15 minutes.

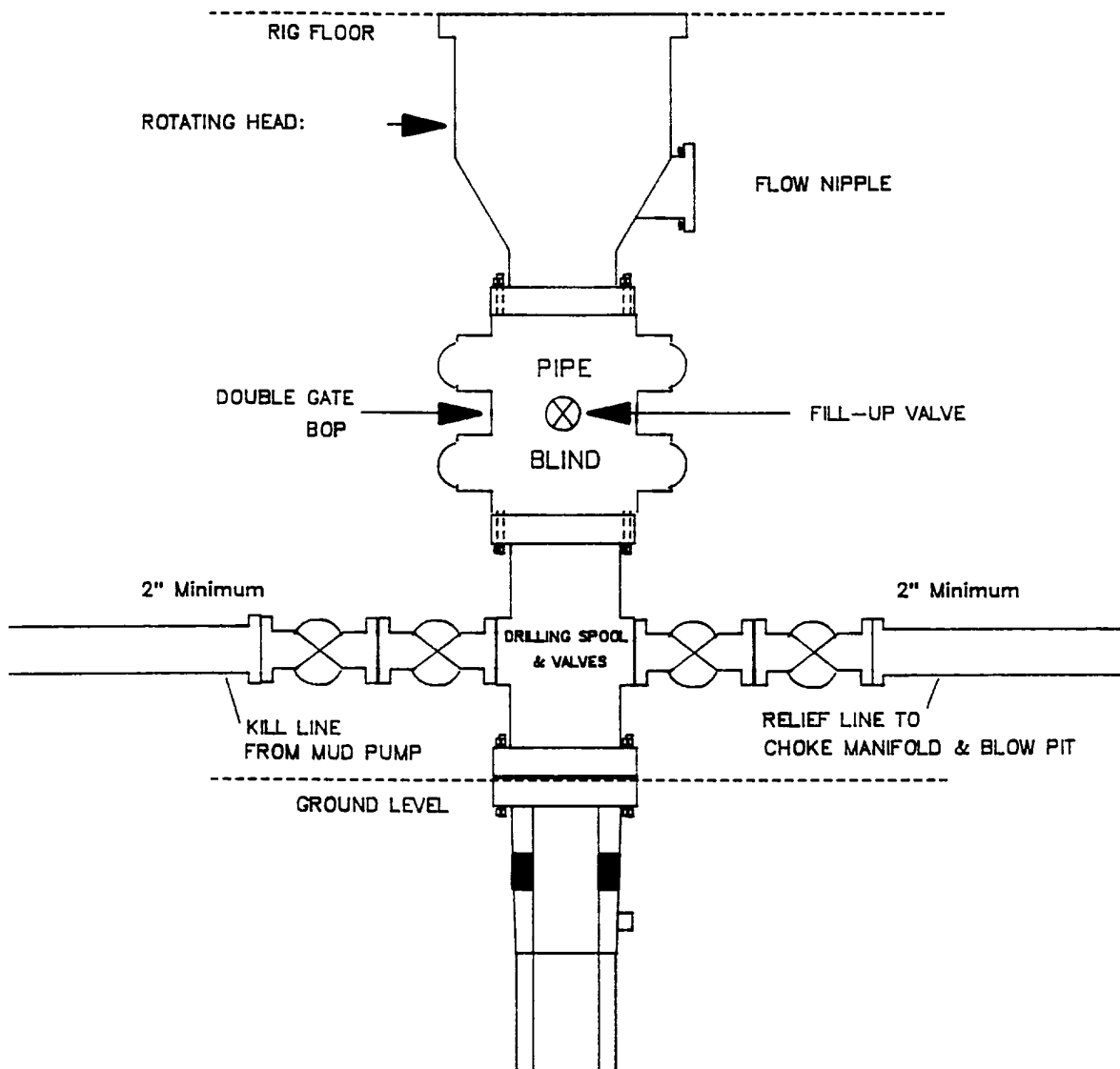
From surface to TD - choke manifold (Reference Figure #3).

Pipe rams will be actuated at least once each day and blind rams actuated once each trip to test proper functioning. An upper kelly cock valve with handle and drill string safety valves to fit each drill string will be maintained and available on the rig floor.

Additional Information:

- * The Fruitland coal formation will be completed.
 - * Anticipated Fruitland pore pressure is 300 psi.
 - * This gas is dedicated.
 - * The E/2 of Section 35 is dedicated to this well.
 - * New casing will be utilized.
 - * Cementing Contractor will provide the BLM with a chronological log including the pump rate and pressure, and the slurry density and volume for all cement jobs.
 - * Pipe movement (either rotation or reciprocation) will be done if hole conditions permit.
-

MERIDIAN OIL INC.
Drilling Rig
BOP Configuration

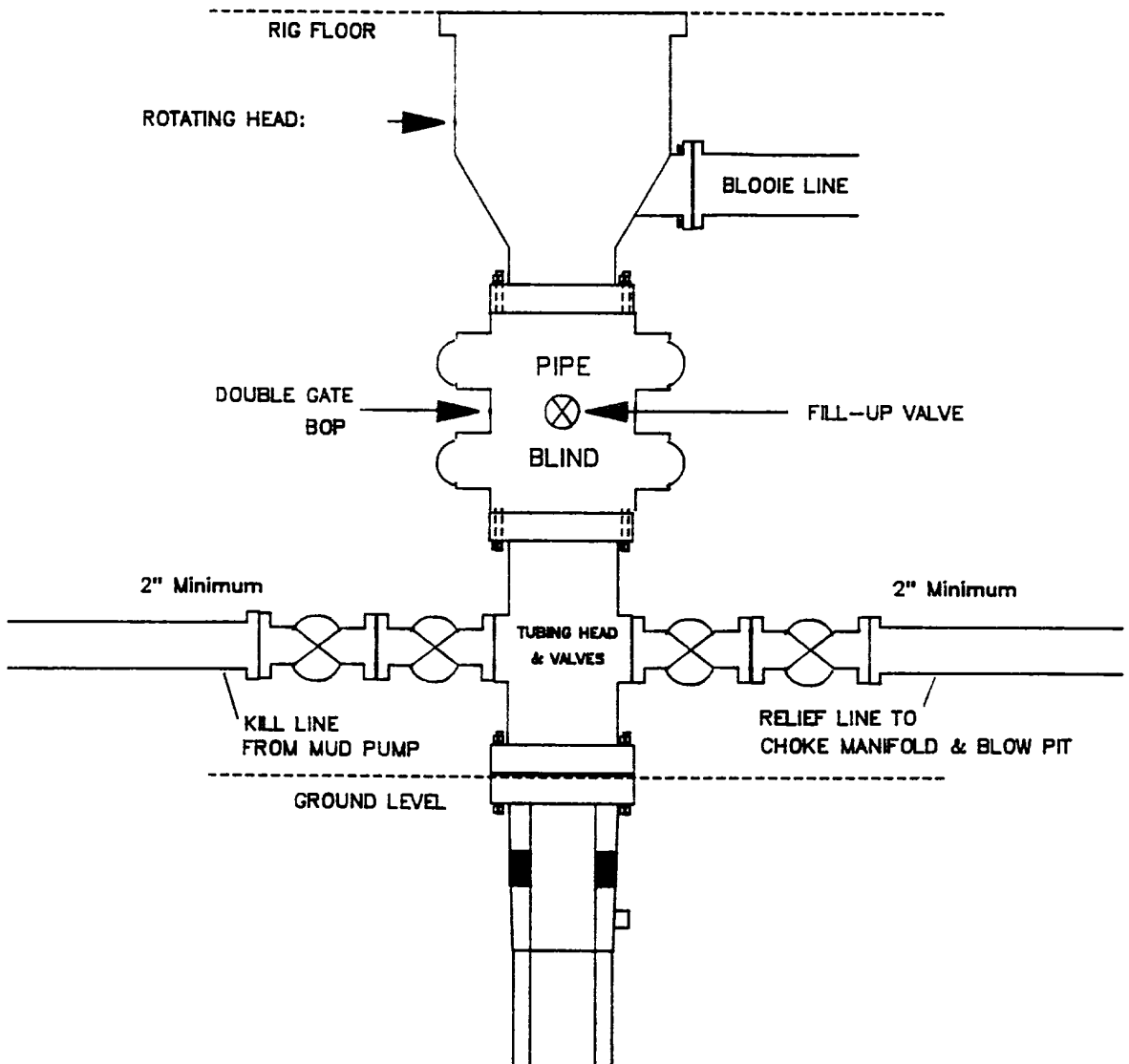


Minimum BOP installation for a typical Fruitland Coal well from surface to Total Depth. 11" Bore (10" Nominal), 2000psi minimum working pressure double gate BOP to be equipped with blind and pipe rams. A Schaffer Type 50 or equivalent rotating head to be installed on the top of BOP. All equipment is 2000psi working pressure/or greater.

Figure #1

AMS/02-05-90

MERIDIAN OIL INC.
Completion Rig
BOP Configuration

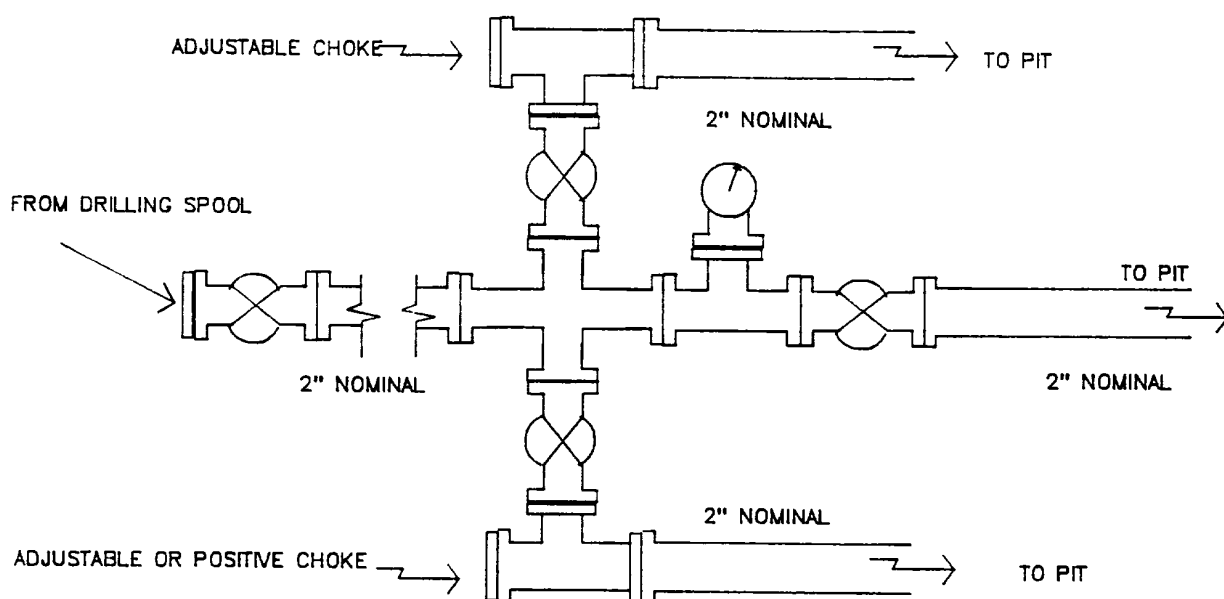


Minimum BOP installation for Completion Operations. 7 1/16" Bore (6" Nominal), 2000psi minimum working pressure double gate BOP to be equipped with blind and pipe rams.

Figure #2

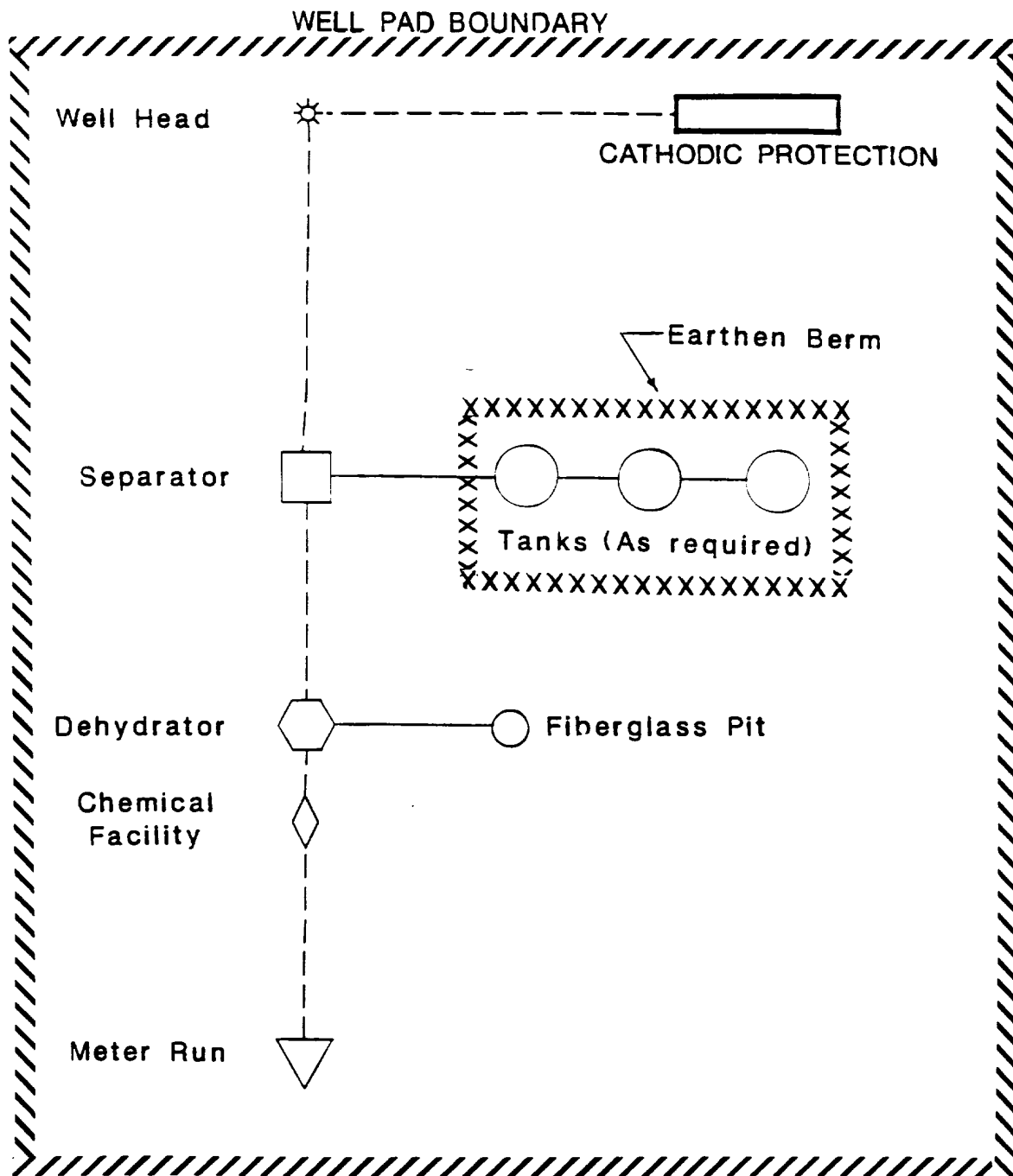
MERIDIAN OIL INC.

Typical Fruitland Coal Well Choke Manifold Configuration



Minimum choke manifold installation for a typical Fruitland Coal well from surface to Total Depth. 2", 2000psi working pressure equipment with two chokes.

Figure #3



PLAT #1

MERIDIAN OIL
ANTICIPATED
PRODUCTION FACILITIES
FOR A
FRUITLAND WELL

KFR 2/90

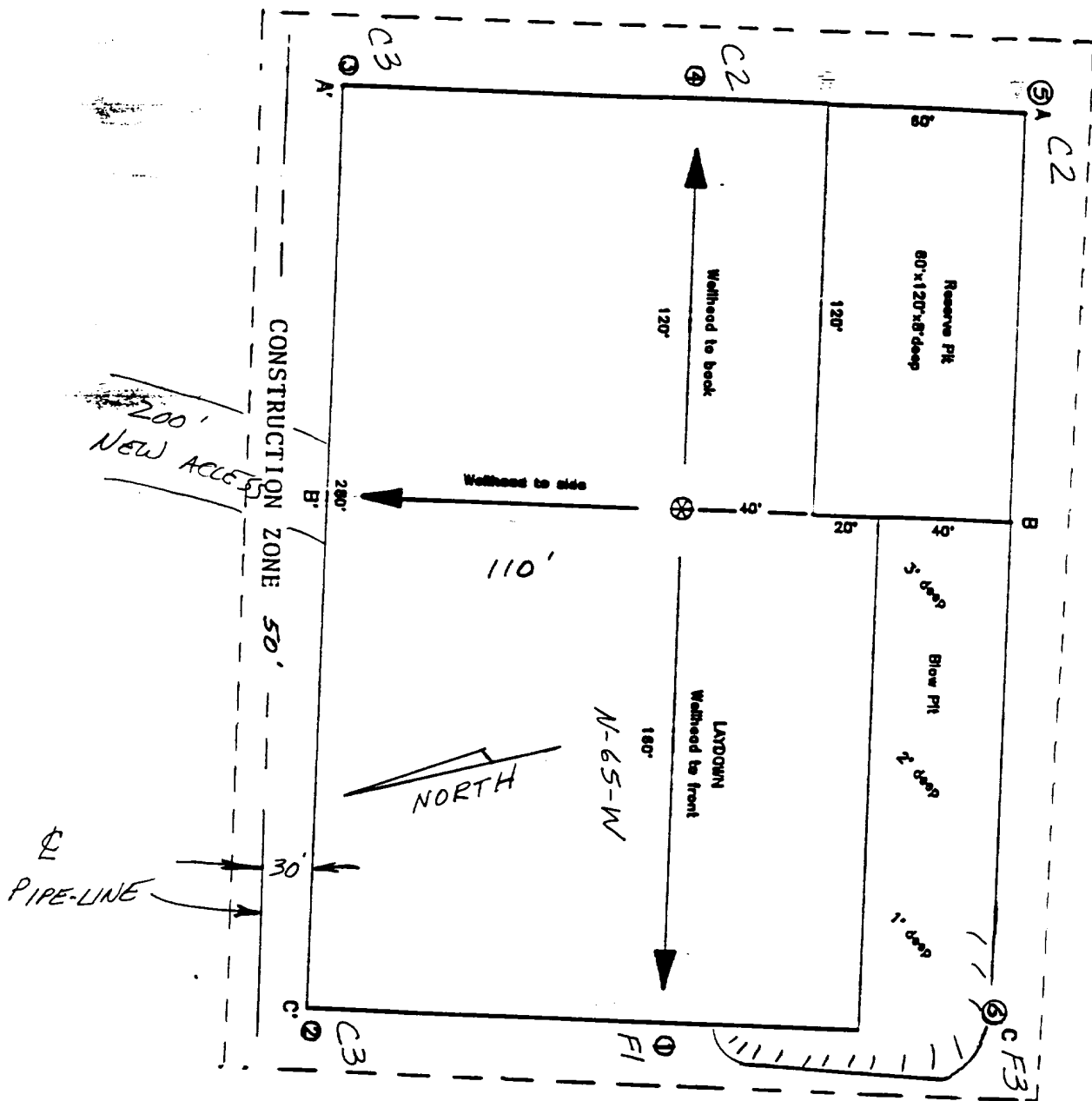
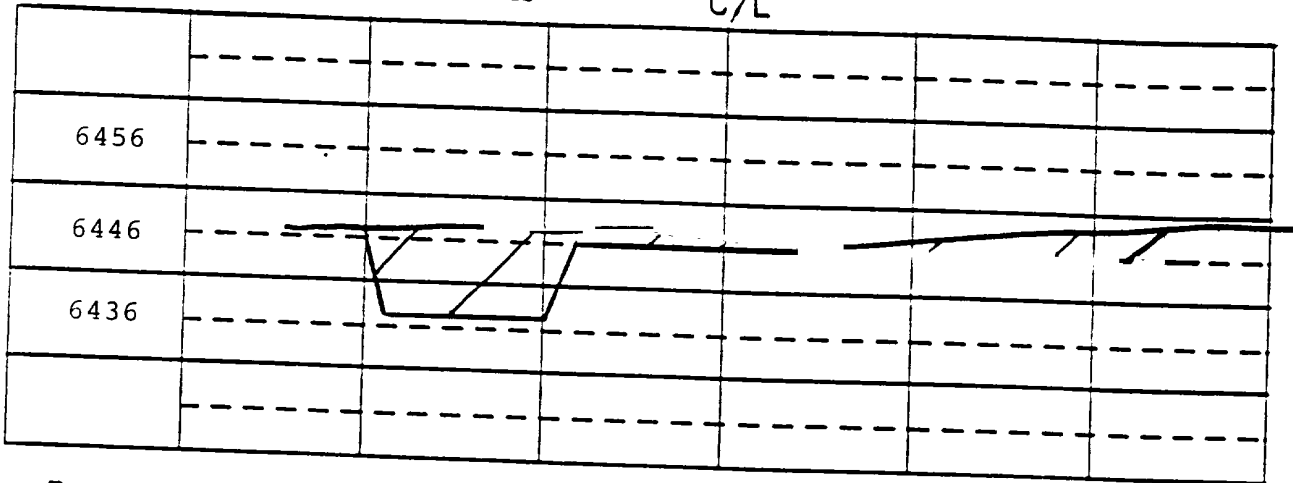


EXHIBIT: _____	
Name: <u>MOI Douthit Federal #351</u>	
Footage: <u>1110' FNL, 1215' FEL,</u>	
Sec <u>35</u>	T- <u>27</u> -N, R- <u>11</u> -W NMMPM
Co. <u>San Juan</u>	St. <u>NM</u>
Elevation: <u>6446'</u>	Date: <u>11-29-90</u>

Plat 2
2/3/90

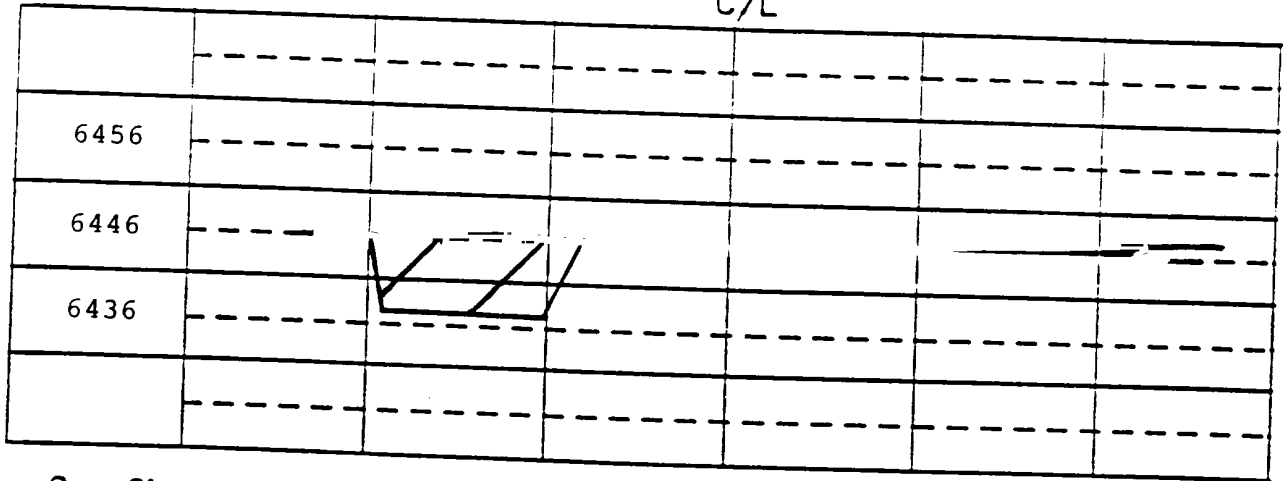
A - A' Vert.:1" = 20' Horiz.:1" = 50'

C/L



B - B'

C/L



C - C'

C/L

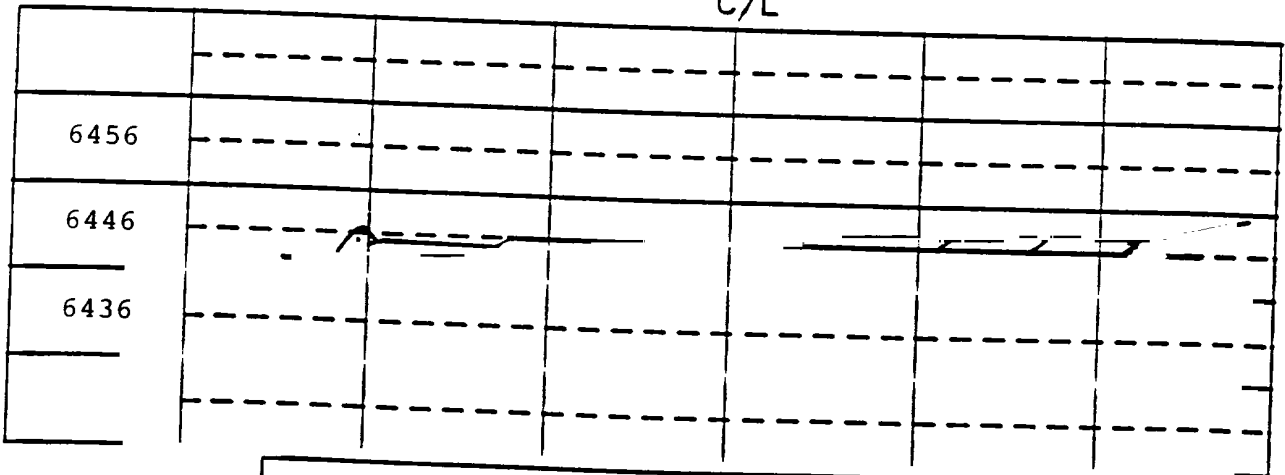


EXHIBIT: _____

Name: MOI Douthit Federal #351

Footage: 1110' FNL, 1215' FEL.

Sec 35 **T-** 27 **-N,R-** 11 **-W** NMPM

Co. San Juan **St.** NM

Elevation: 6446' **Date:** 11-29-90

Plot XC
2/4/90