

UNITED STATES  
DEPARTMENT OF THE INTERIOR  
BUREAU OF LAND MANAGEMENT

APPLICATION FOR PERMIT TO DRILL, DEEPEN, OR PLUG BACK

1a. TYPE OF WORK  
DRILL ☒ DEEPEN ☐ PLUG BACK ☐  
b. TYPE OF WELL  
OIL WELL ☐ GAS WELL ☒ OTHER ☐ SINGLE ZONE ☒ MULTIPLE ZONE ☐

2. NAME OF OPERATOR  
Maralex Resources, Inc.

3. ADDRESS OF OPERATOR  
518 17th Street, Suite 1030, Denver, CO 80202

4. LOCATION OF WELL (Report location clearly and in accordance with any State requirements.)  
At surface 1775' FNL and 1650 FEL (Unit Letter G)  
At proposed prod. zone Same

14. DISTANCE IN MILES AND DIRECTION FROM NEAREST TOWN OR POST OFFICE\*  
Approximately 22 miles southeast of Blanco, NM

15. DISTANCE FROM PROPOSED\* LOCATION TO NEAREST PROPERTY OR LEASE LINE, FT.  
(Also to nearest drlg. unit line, if any) 1650'

18. DISTANCE FROM PROPOSED LOCATION\* TO NEAREST WELL, DRILLING COMPLETED, OR APPLIED FOR, ON THIS LEASE, FT. 260'

21. ELEVATIONS (Show whether DF, RT, GR, etc.) This action is subject to technical and procedural review pursuant to 43 CFR 3165.3  
6610' GR, 6623' KB

23. PROPOSED CASING AND CEMENTING PROGRAM

SIZE OF HOLE	SIZE OF CASING	WEIGHT PER FOOT	SETTING DEPTH
12-1/4"	8-5/8"	23# J-55	300'
7-7/8"	5-1/2"	23# J-55	3000'

5. LEASE DESIGNATION AND SERIAL NO.  
SF 078478

6. IF INDIAN, ALLOTTEE OR TRIBE NAME  
None

7. UNIT AGREEMENT NAME  
-----

8. FARM OR LEASE NAME

9. WELL NO.  
Marron W.N. Fed. Com.

10. FIELD AND POOL, OR WILDCAT  
10

Basin Fruitland Coal

11. SEC., T., R., M., OR BLM.  
AND SURVEY OR AREA

Sec. 24, T27N, R8W

12. COUNTY OR PARISH 13. STATE  
San Juan New Mexico

17. NO. OF ACRES ASSIGNED TO THIS WELL  
320

20. ROTARY OR CABLE TOOLS  
Rotary

22. APPROX. DATE WORK WILL START\*  
November 1, 1990

DRILLING OPERATIONS AUTHORIZED ARE  
SUBJECT TO COMPLIANCE WITH ATTACHED  
"GENERAL REQUIREMENTS"

248 cuft/210 sx Class B w/2%  
CaCl<sub>2</sub>  
500 cuft/400 sx 50:50 POZ  
w/2% gel  
118 cuft/100 sx Class B neat  
tail

Maralex Resources, Inc. proposes to drill a 12-1/4" hole to 300' using a native fresh water mud. The 8-5/8" surface string will be cemented back to surface. Casing will then be drilled out with a 7-7/8" bit using a low solids, non-dispersed fresh water mud. Upon reaching TD, a full suite of open hole logs will be run and 5-1/2" production casing will be set and cemented back to surface. In accordance with "On Shore Oil and Gas Order #1", attached is the Drilling Plan and Surface Use Plan that we will follow in drilling the subject well.

RECEIVED

IN ABOVE SPACE DESCRIBE PROPOSED ACTION. If proposal is to deepen or plug back, give data on present productive zone and proposed new productive zone. If proposal is to drill or deepen directionally, give pertinent data on subsurface locations and measured and true vertical depths. Give blowout preventer program, if any.

24. OIL CON. DIV.

SIGNED A. M. O'Dell DIST. 3 TITLE President DATE 10/5/90

(This space for Federal or State office use)

PERMIT NO. APPROVAL DATE

APPROVED BY CONDITIONS OF APPROVAL, IF ANY: TITLE DATE

NMOCD

\*See Instructions On Reverse Side

Title 18 U.S.C. Section 1001, makes it a crime for any person knowingly and willfully to make to any department or agency of the United States any false, fictitious or fraudulent statements or representations as to any matter within its jurisdiction.

Submit to Appropriate  
District Office  
State Lease - 4 copies  
Fee Lease - 3 copies

State of New Mexico  
Energy, Minerals and Natural Resources Department

Form C-902  
Revised 3-1-89

OIL CONSERVATION DIVISION

P.O. Box 2088  
Santa Fe, New Mexico 87504-2088

DISTRICT I  
P.O. Box 1980, Hobbs, NM 88240

DISTRICT II  
P.O. Drawer DD, Artesia, NM 88210

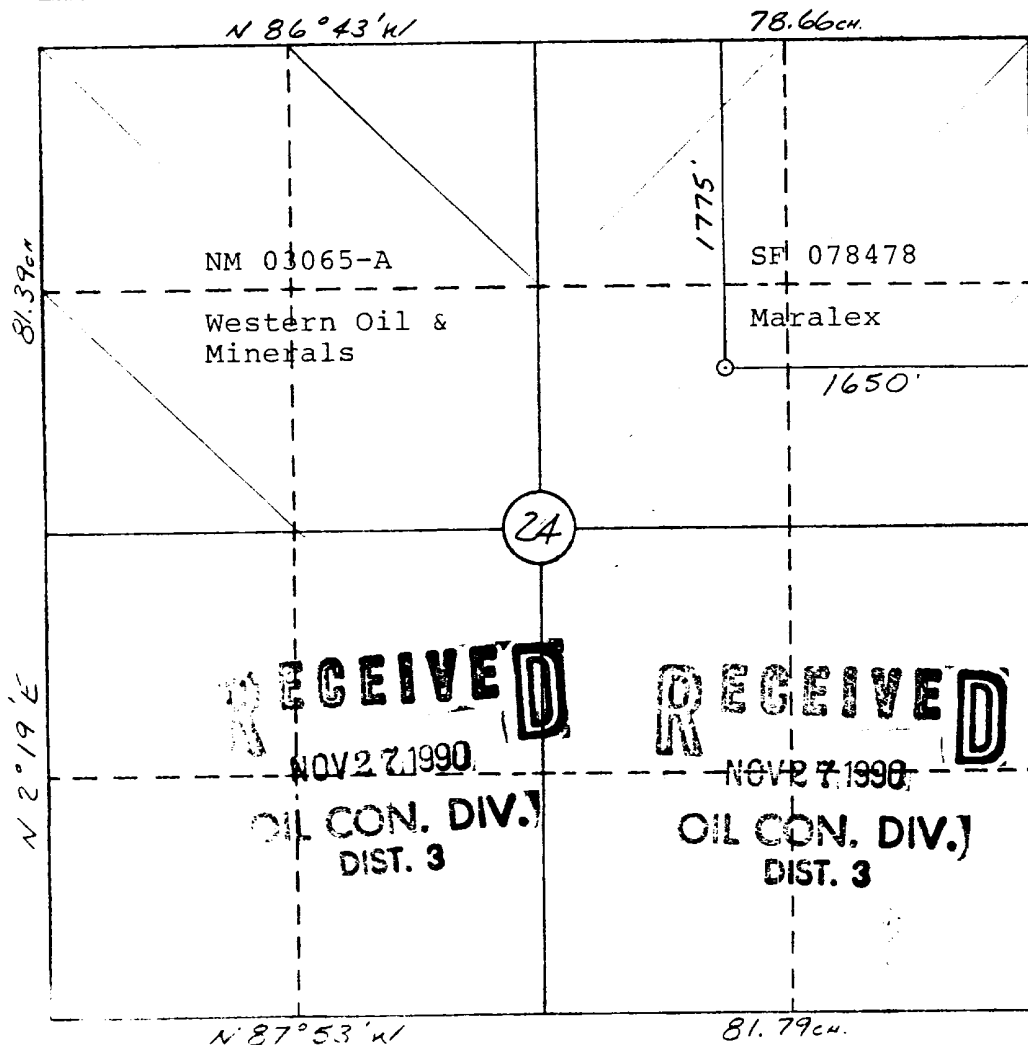
DISTRICT III  
1000 Rio Brazos Rd., Aztec, NM 87410

WELL LOCATION AND ACREAGE DEDICATION PLAT

All Distances must be from the outer boundaries of the section

Operator MARALEX RESOURCES, INC.			Lease MARRON W.N. FEDERAL COM		Well No. 10
Unit Letter G	Section 24	Township 27 N	Range 8 W	County San Juan	
Actual Footage Location of Well: 1775 feet from the North line and 1650 feet from the East line					
Ground level Elev. 6610	Producing Formation Fruitland	Pool Basin-Fruitland Coal Gas		Dedicated Acreage: 320 Acres	
<p>1. Outline the acreage dedicated to the subject well by colored pencil or hatchure marks on the plat below.</p> <p>2. If more than one lease is dedicated to the well, outline each and identify the ownership thereof (both as to working interest and royalty).</p> <p>3. If more than one lease of different ownership is dedicated to the well, have the interest of all owners been consolidated by communitization, unitization, force-pooling, etc.? <input checked="" type="checkbox"/> Yes <input type="checkbox"/> No If answer is "yes" type of consolidation <u>Communitization</u></p> <p>If answer is "no" list the owners and tract descriptions which have actually been consolidated. (Use reverse side of this form if necessary.)</p> <p>No allowable will be assigned to the well until all interests have been consolidated (by communitization, unitization, forced-pooling, or otherwise) or until a non-standard unit, eliminating such interest, has been approved by the Division.</p>					

0 330 660 990 1320 1650 1980 2310 2640 2970 3300 3630 3960 4290 0



OPERATOR CERTIFICATION

I hereby certify that the information contained herein is true and complete to the best of my knowledge and belief

Signature  
*A. M. O'Hare*  
Printed Name  
A. M. O'Hare  
Position  
President  
Company  
Maralex Resources, Inc.  
Date  
10/5/90

SURVEYOR CERTIFICATION

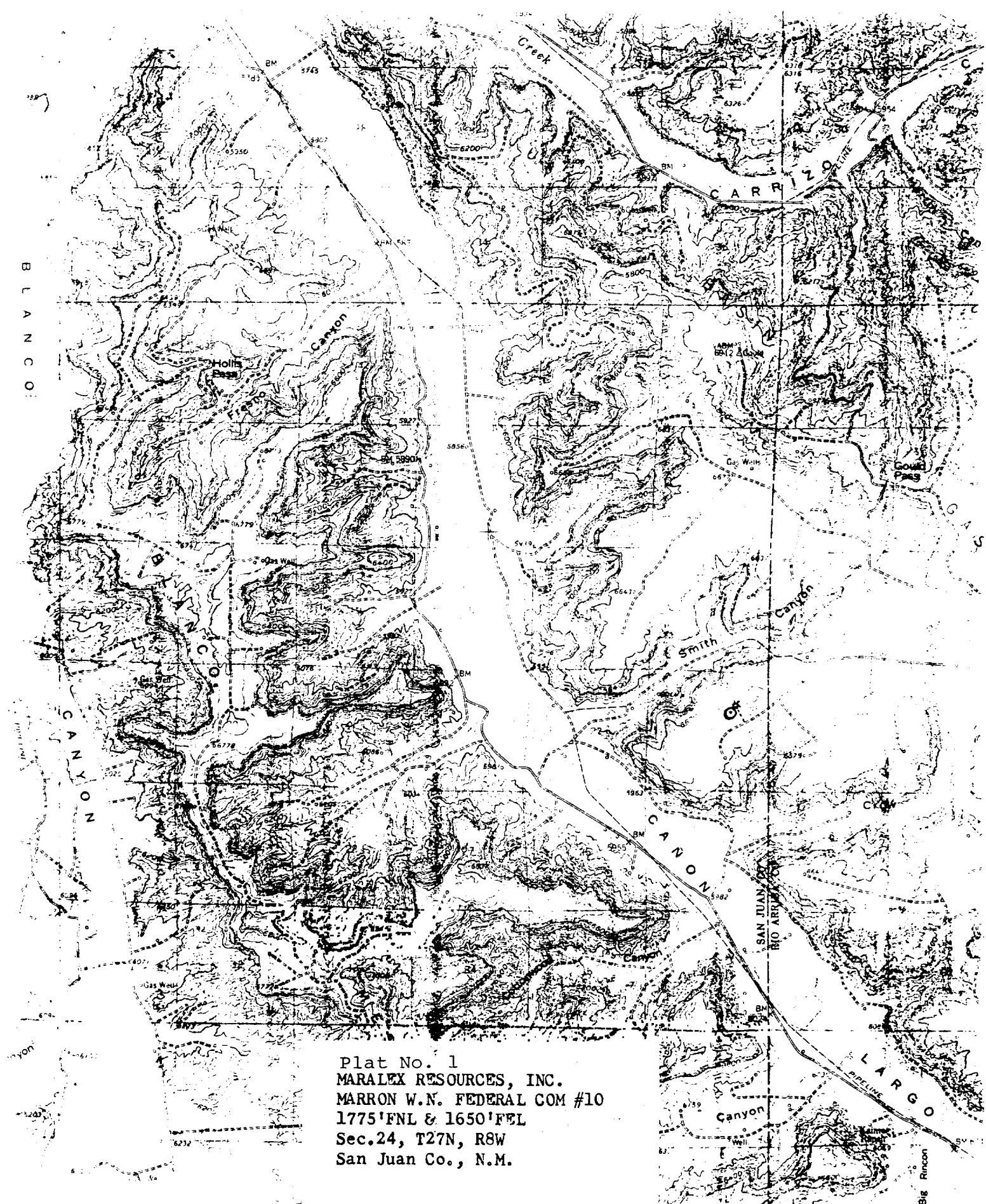
I hereby certify that the well location shown on this plat was plotted from field notes of actual surveys made by me or under my supervision, and that the same is true and correct to the best of my knowledge and belief.

9-21-90

Date Surveyed  
William E. Mahnke II

Signature & Seal of Professional Surveyor  
WILLIAM E. MAHNKE II

Certificate No.  
8466



Plat No. 1  
MARALEX RESOURCES, INC.  
MARRON W.N. FEDERAL COM #10  
1775'FNL & 1650'FEL  
Sec.24, T27N, R8W  
San Juan Co., N.M.

SCALE 1:62500