

UNITED STATES
DEPARTMENT OF THE INTERIOR
BUREAU OF LAND MANAGEMENT

RECEIVED

FEB 13 1991 30-045 529

SUNDRY NOTICES AND REPORTS ON WELLS

1. TYPE OF WELL GAS		5. LEASE NUMBER SF-078092	
2. OPERATOR MERIDIAN OIL INC.		6. IF INDIAN, ALL. OR TRIBE NAME	
3. ADDRESS & PHONE NO. OF OPERATOR P O BOX 4289 FARMINGTON, NM 87499		7. UNIT AGREEMENT NAME	
4. LOCATION OF WELL 1000' FNL 1000' FEL		8. FARM OR LEASE NAME DOUTHIT FEDERAL	
14. PERMIT NO.		9. WELL NO. 271 (A/320)	
15. ELEVATIONS 6406' GL		10. FIELD, POOL, OR WILDCAT BASIN FRUITLAND COAL	
		11. SEC. T. R. M OR BLK. A SEC. 27 T27N R11W NMPM	
		12. COUNTY SAN JUAN	13. STATE NM

16. SUBSEQUENT REPORT OF: Amended Application for Permit to Drill

17. Describe proposed or completed operations

Reference is made to Marathon Oil's permit to drill the Douthit Federal #27-1 submitted 10-02-90 and approved 11-27-90.

Meridian Oil Inc. will operate and drill this well as the Douthit Federal # 271 at 1000' FNL and 1000' FEL of Section 27 of Township 27 and Range 11.

- Submitted for review:
- Plat
 - Operations Plan
 - BOP Diagrams
 - Facilities Diagram

RECEIVED
MAR 0 1 1991
OIL CON. DIV
DIST. 3

18. AUTHORIZED BY: [Signature]
REGULATORY AFFAIRS

DATE	<u>[Signature]</u>
DATE	<u>[Signature]</u>

NOTE: THIS FORMAT IS ISSUED IN LIEU OF US BLM FORM 3160-5.

(This space for Federal or State office use)

APPROVED BY _____ TITLE _____
CONDITION OF APPROVAL, IF ANY: _____

*Hold 27104 to cancel
Marathon Douthit Fed. 271 well*

Submit to Appropriate District Office
 State Lease - 4 copies
 Fee Lease - 3 copies

State of New Mexico
 Energy, Minerals and Natural Resources Department

Form C-102
 Revised 1-1-89

OIL CONSERVATION DIVISION

P.O. Box 2088

Santa Fe, New Mexico 87504-2088

DISTRICT I
 P.O. Box 1980, Hobbs, NM 88240

DISTRICT II
 P.O. Drawer 00, Artesa, NM 88210

DISTRICT III
 1000 Rio Arriba Rd., Aztec, NM 87410

WELL LOCATION AND ACREAGE DEDICATION PLAT

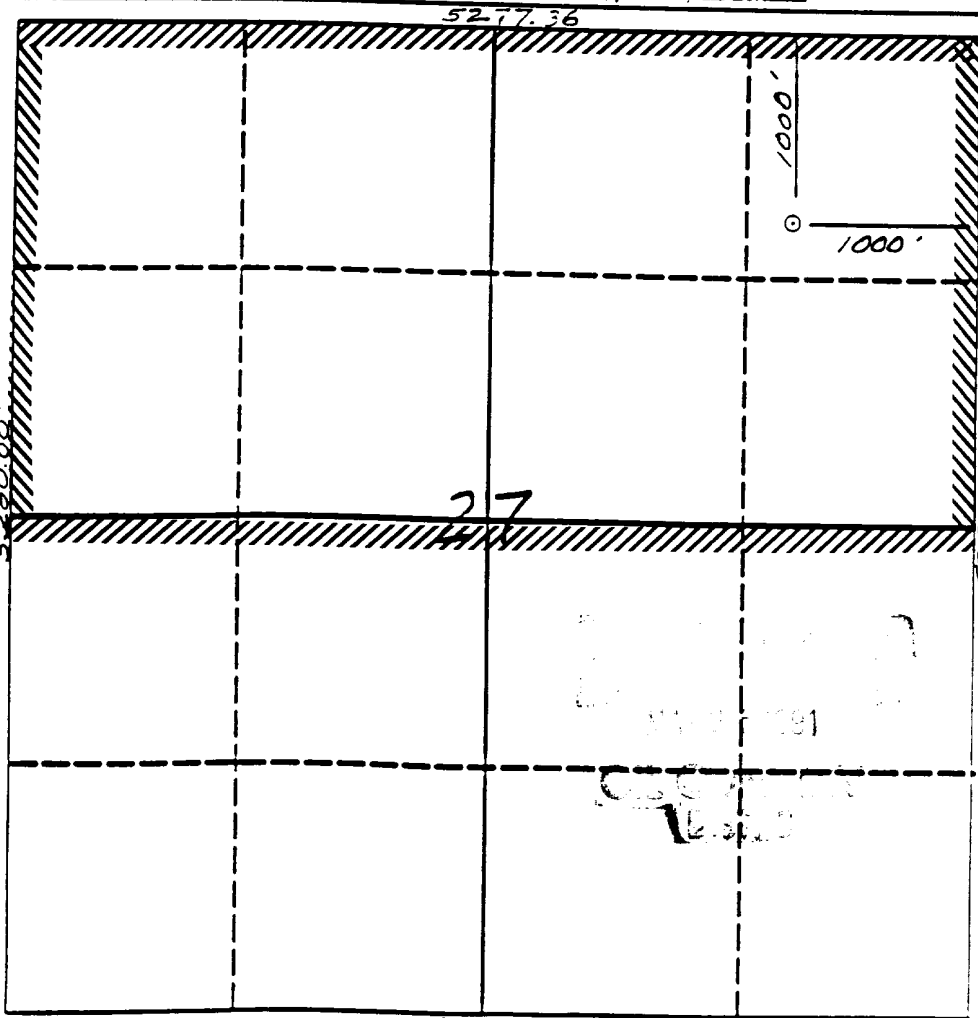
All Distances must be from the outer boundaries of the section

Operator Meridian Oil Inc.		Lease Douthit Federal	SF-078092	Well No. 271
Unit Letter A	Section 27	Township 27N	Range 11W	County San Juan
Actual Footage Location of Well: 1000 feet from the North line and 1000 feet from the East line				
Ground level Elev. 6406'	Producing Formation Fruitland Coal Basin		Foot	Distance Acreage 320 Acres

- Outline the acreage dedicated to the subject well by colored pencil or lacquer marks on the plat below.
- If more than one lease is dedicated to the well, outline each and identify the ownership thereof (both as to working interest and royalty).
- If more than one lease of different ownership is dedicated to the well, have the interest of all owners been consolidated by commutation, unification, force-pooling, etc.?
 Yes No If answer is "yes" type of consolidation _____

If answer is "no" list the owners and tract descriptions which have actually been consolidated. (Use reverse side of this form if necessary.)

No allowable will be assigned to the well until all interests have been consolidated (by commutation, unification, force-pooling, or otherwise) or until a non-standard unit, eliminating such interest, has been approved by the Division.



OPERATOR CERTIFICATION

I hereby certify that the information contained herein is true and complete to the best of my knowledge and belief.

Peggy Bradfield
 Signature

Peggy Bradfield

Printed Name

Regulatory Affairs

Position

Meridian Oil Inc.

Company

3-22-91

Date

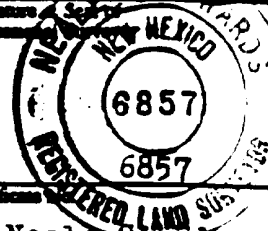
SURVEYOR CERTIFICATION

I hereby certify that the well location shown on this plat was plotted from field notes of actual surveys made by me or under my supervision, and that the same is true and correct to the best of my knowledge and belief.

11-29-90

Date Surveyed

[Signature]
 Signature of Surveyor
 Professional



Well Name: 271 DOUTHIT FEDERAL 1000'FNL 1000'FEL
 Sec. 27 T27N R11W SAN JUAN NEW MEXICO
 BASIN FRUITLAND COAL Elevation 6406'GL

Formation tops: Surface- NACIMIENTO
 Ojo Alamo- 927
 Kirtland- 1037
 Fruitland- 1757
 Fruitland Coal Top- 1802
 Fruitland Coal Base- 2005
 Pictured Cliffs- 2007
 Total Depth- 2045

Logging Program: Mud logs from 1757 to total depth.

Mud Program:	Interval	Type	Weight	Visc.	Fl. Loss
	0 - 200	Spud	8.4 - 8.9	40-50	no contro
	200 - 2045	Non-dispersed	8.4 - 9.5	30-60	no contro

Casing Program:	Hole Size	Depth Interval	Csg. Size	Weight	Grade
	12 1/4"	0 - 200	8 5/8"	24.0#	K-55
	7 7/8"	0 - 2045	5 1/2"	15.5#	K-55
Tubing Program:		0 - 2045	2 3/8"	4.7#	J-55

Float Equipment: 8 5/8" surface casing - saw tooth guide shoe. Centralizers will be run in accordance with Onshore Order #2.

5 1/2" production casing - guide shoe on bottom. Float valve one joint off bottom. Three centralizers run every other joint above shoe. Two turbolizing type centralizers - one below and one into the base of the Ojo Alamo @ 1037' Stage tool @ 1037'. Standard centralizers thereafter every fourth joint up to the base of the surface pipe.

Wellhead Equipment: 8 5/8" x 5 1/2" x 2 3/8" x 11" 3000 psi xmas tree assembl

Cementing:

8 5/8" surface casing - cement with 211 sacks of class "B" cement with 1/4# flocele/sack and 3% calcium chloride (248 cu ft. of slurry, 200% excess to circulate to surface). WOC 12 hours. Test casing to 600 psi for 30 minutes.

5 1/2" production casing - First stage: Lead with 70 sacks of 65/35 Class "B" pozmix with 6% gel, 2% CaCl₂, 5#/sack Gilsonite, and 1/4#/sack Flocele. Tail with 130 sacks Class "B" with 2% CaCl₂. Second Stage: Lead with 190 sacks of 65/35 Class "B" pozmix with 6% gel, 2% CaCl₂, 5#/sack Gilsonite, and 1/4#/sack Flocele. Tail with 60 sacks Class "B" with 2% CaCl₂. WOC 12 hours. If cement does not circulate to surface, a temperature log will be run after 8 hours to determine TOC.