

UNITED STATES
DEPARTMENT OF THE INTERIOR
BUREAU OF LAND MANAGEMENT

APPLICATION FOR PERMIT TO DRILL, DEEPEN, OR PLUG BACK

1a. TYPE OF WORK

DRILL ☐

DEEPEN ☐

PLUG BACK ☐

b. TYPE OF WELL

OIL
WELL ☐

GAS
WELL ☒

OTHER

SINGLE
ZONE ☒

MULTIPLE
ZONE ☐

2. NAME OF OPERATOR

Maralex Resources, Inc.

3. ADDRESS OF OPERATOR

518 17th, St., Suite 1030, Denver, CO 80202

4. LOCATION OF WELL (Report location clearly and in accordance with any State requirements.)*

At surface

795' FSL, 1045' FWL

At proposed prod. zone

14. DISTANCE IN MILES AND DIRECTION FROM NEAREST TOWN OR POST OFFICE*

Approximately 24 miles southeast of Blanco, NM

10. DISTANCE FROM PROPOSED*

LOCATION TO NEAREST

PROPERTY OR LEASE LINE, FT.

(Also to nearest drlg. unit line, if any)

795'

18. DISTANCE FROM PROPOSED LOCATION*

TO NEAREST WELL, DRILLING, COMPLETED,

OR APPLIED FOR, ON THIS LEASE, FT.

220'

16. NO. OF ACRES IN LEASE

160 320

19. PROPOSED DEPTH

2950

17. NO. OF ACRES ASSIGNED

TO THIS WELL

S/320

20. ROTARY OR CABLE TOOLS

Rotary

21. ELEVATIONS (Show whether DF, RT, GR, etc.)

6728' GR, 6741' KB

22. APPROX. DATE WORK WILL START*

4/3/91

This action is subject to technical and
procedural review pursuant to 43 CFR 3165.3
and appeal pursuant to 43 CFR 3165.4.

PROPOSED CASING AND CEMENTING PROGRAM

QUANTITY OF CEMENT REQUIRED

SIZE OF HOLE	SIZE OF CASING	WEIGHT PER FOOT	SETTING DEPTH	QUANTITY OF CEMENT REQUIRED
12-1/4"	8-5/8"	24#, LS	300'	295ft ³ /250sx Class B w/2% CaCl ₂ .
7-7/8"	5-1/2"	15.5#, J-55	2950'	491ft ³ /310 sx 65:35 Poz w/6% gel 138ft ³ /100 sx Class B neat.

Maralex Resources, Inc. proposes to drill a 12-1/4" hole to 300' using a native fresh water mud. The 8-5/8" surface casing will be cemented back to surface. Casing will then be drilled out with a 7-7/8" bit using a low solids, non-dispersed fresh water mud. Upon reaching TD, a full suite of open-hole logs will be run and 5-1/2" production casing will be set and cemented back to surface. In accordance with "On Shore Oil and Gas Order #1", attached is the Drilling Plan and Surface Use Plan that we will follow in drilling the subject well.

RECEIVED
MAR 29 1991
OIL CON. DIV.
DIST. 3

"Approval of this action does
not warrant that the operation
is legal or conforms to
or that this is a..."

IN ABOVE SPACE DESCRIBE PROPOSED PROGRAM: If proposal is to deepen or plug back, give data on present productive zone and proposed new productive zone. If proposal is to drill or deepen directionally, give pertinent data on subsurface locations and measured and true vertical depths. Give blowout preventer program, if any.

24.

SIGNED

A. M. E. Hane

TITLE President

DATE 2/15/91

(This space for Federal or State office use)

PERMIT NO.

APPROVAL DATE

APPROVED BY

TITLE

CONDITIONS OF APPROVAL, IF ANY:

Hold copy for CR

NMOOD

*See Instructions On Reverse Side

APPROVED
AS AMENDED

MAR 25 1991

AREA MANAGER

OIL CONSERVATION DIVISION

STATE OF NEW MEXICO
ENERGY AND MINERALS DEPARTMENTP. O. BOX 2088
SANTA FE, NEW MEXICO 87501Form C-102
Revised 10-1-77

All distances must be from the outer boundaries of the Section.

Operator MARALEX RESOURCES INC.			Lease MARRON W.N. FEDERAL COM		Well No. #12
Unit Letter M	Section 27	Township 27N	Range 8 W	County SAN JUAN	
Actual Fastage Location of Well: 795 feet from the SOUTH line and 1045 feet from the WEST line					
Ground Level Elev. 6729	Producing Formation Fruitland Coal		Pool Basin Fruitland Coal		Dedicated Acreage: 320 Acres

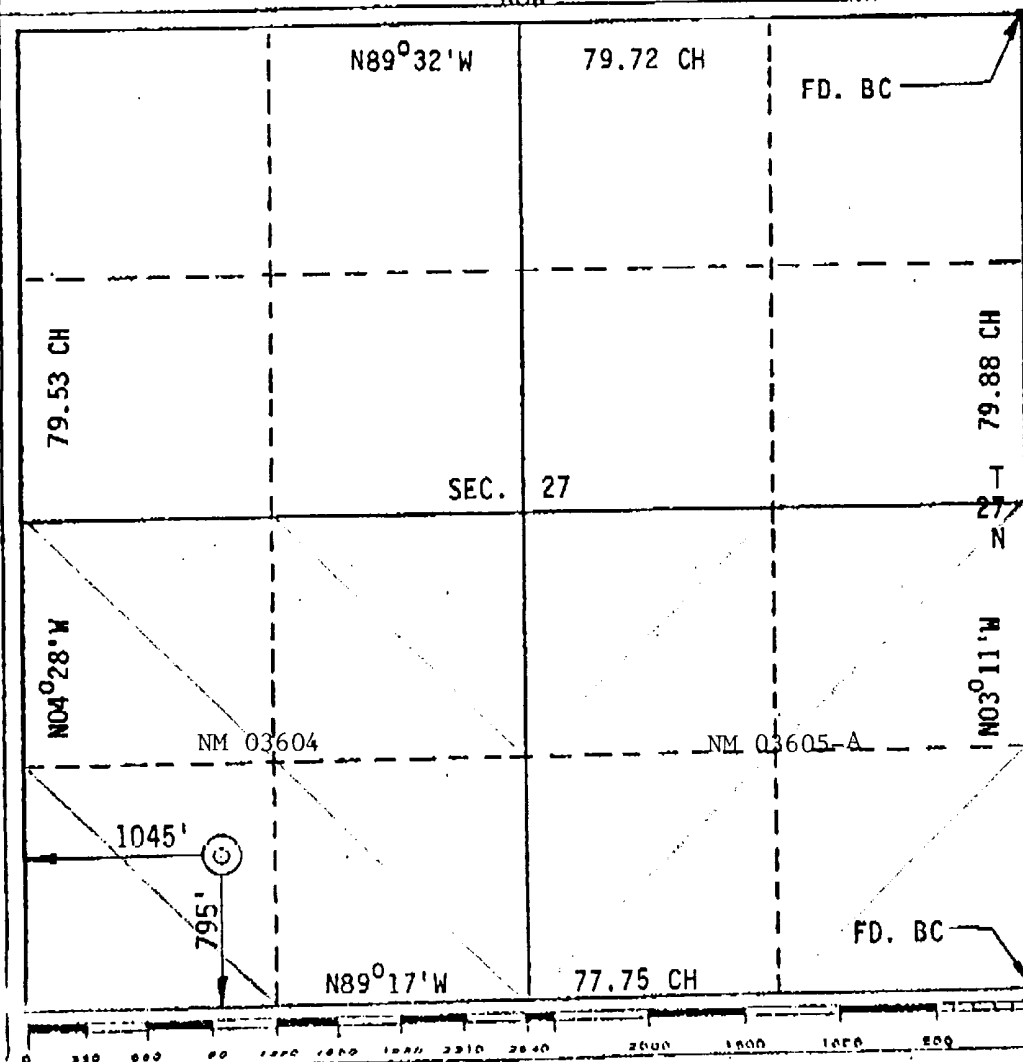
1. Outline the acreage dedicated to the subject well by colored pencil or hachure marks on the plat below.
2. If more than one lease is dedicated to the well, outline each and identify the ownership thereof (both as to working interest and royalty).
3. If more than one lease of different ownership is dedicated to the well, have the interests of all owners been consolidated by communitization, unitization, force-pooling, etc?

☐ Yes ☒ No If answer is "yes," type of consolidation _____

If answer is "no," list the owners and tract descriptions which have actually been consolidated. (Use reverse side of this form if necessary.) _____

No allowable will be assigned to the well until all interests have been consolidated (by communitization, unitization, forced-pooling, or otherwise) or until a non-standard unit, eliminating such interests, has been approved by the Division.

R8W



CERTIFICATION

I hereby certify that the information contained herein is true and complete to the best of my knowledge and belief.

Name

A. M. O'Hare

Position

President

Company

Maralex Resources, Inc.

Date

2/15/91

I hereby certify that the well location shown on this plat was plotted from field notes of actual surveys made by me or under my supervision, and that the same is true and correct to the best of my knowledge and belief.

Date Surveyed

NOV. 2, 1990

Registered Professional Engineer
and/or Land Surveyor

Certificate No.

8894

Maralex Resources, Inc.
Marron W.N. Fed Com #12
795' FSL, 1045' FWL
Section 27, T27N, R8W
San Juan County, NM
Access on Public Lands

RECEIVED
MAR 29 1991
ON CON. DIV
DIST. 3 Smith

