

UNITED STATES  
DEPARTMENT OF THE INTERIOR  
BUREAU OF LAND MANAGEMENT

RECEIVED  
BLM

APPLICATION FOR PERMIT TO DRILL, DEEPEN, OR PLUG BACK

1a. TYPE OF WORK

DRILL ☒

DEEPEN ☐

PLUG BACK ☐

b. TYPE OF WELL

OIL  
WELL ☐

GAS  
WELL ☒

OTHER

SINGLE  
ZONE ☐

MULTIPLE  
ZONE ☐

2. NAME OF OPERATOR

BHP Petroleum (Americas) Inc.

3. ADDRESS OF OPERATOR

5847 San Felipe #3600 Houston, Texas 77057

4. LOCATION OF WELL (Report location clearly and in accordance with any State requirements.)\*

At surface

1785' FNL & 1835' FEL (SW NE)

At proposed prod. zone

14. DISTANCE IN MILES AND DIRECTION FROM NEAREST TOWN OR POST OFFICE\*

Approximatley 12 miles aouttheast of Farmington, NM.

15. DISTANCE FROM PROPOSED\*

LOCATION TO NEAREST  
PROPERTY OR LEASE LINE, FT.  
(Also to nearest drig. unit line, if any)

1835'

16. NO. OF ACRES IN LEASE

2560.96

18. DISTANCE FROM PROPOSED LOCATION\*  
TO NEAREST WELL, DRILLING, COMPLETED,  
OR APPLIED FOR, ON THIS LEASE, FT.

Approx. 65'

19. PROPOSED DEPTH

1850'

17. NO. OF ACRES ASSIGNED  
TO THIS WELL

N/320

20. NOTARY OR CABLE TOOLS

Rotary

21. ELEVATIONS (Show whether DF, RT, GR, etc.)

5679' GR 5877

This action is subject to technical and  
procedural review pursuant to 43 CFR 3155.3

and appeal pursuant to 43 CFR 3155.4.  
PROPOSED CASING AND CEMENTING PROGRAM

22. APPROX. DATE WORK WILL START\*

As soon as approved

23.

SIZE OF HOLE	SIZE OF CASING	WEIGHT PER FOOT	SETTING DEPTH	QUANTITY OF CEMENT
8 3/4"	7"	20#	±120'	50 sx
6 1/4"	4 1/2"	10.5#	±1850'	230 sx

Item 6.D. addresses the use of off lease roads crossing BLM managed surface  
via a Right of Way.

RECEIVED  
MAY 20 1991  
OIL CON. DIV.  
DIST. 3

IN ABOVE SPACE DESCRIBE PROPOSED PROGRAM: If proposal is to deepen or plug back, give data on present productive zone and proposed new productive zone. If proposal is to drill or deepen directionally, give pertinent data on subsurface locations and measured and true vertical depths. Give blowout preventer program, if any.

24.

SIGNED

*Chuck Williams*

TITLE Field Services Administrator DATE April 4, 1991

Chuck Williams

(This space for Federal or State office use)

PERMIT NO.

APPROVAL DATE

APPROVED  
AS AMENDED

APPROVED BY

TITLE

DATE

CONDITIONS OF APPROVAL, IF ANY:

MAY 15 1991

*John S. Hella*  
AREA MANAGER

NMOOD

\*See Instructions On Reverse Side

Submit to Appropriate  
District Office  
State Lease - 4 copies  
Fee Lease - 3 copies

State of New Mexico  
Energy, Minerals and Natural Resources Department

Form O-149  
Revised 1-1-89

DISTRICT I  
P.O. Box 1980, Hobbs, NM 88240

DISTRICT II  
P.O. Drawer DD, Artesia, NM 88210

DISTRICT III  
1000 Rio Brazos Rd., Aztec, NM 87410

OIL CONSERVATION DIVISION

P.O. Box 2088  
Santa Fe, New Mexico 87504-2088

RECEIVED  
BLM

91 APR -9 AM 11:29

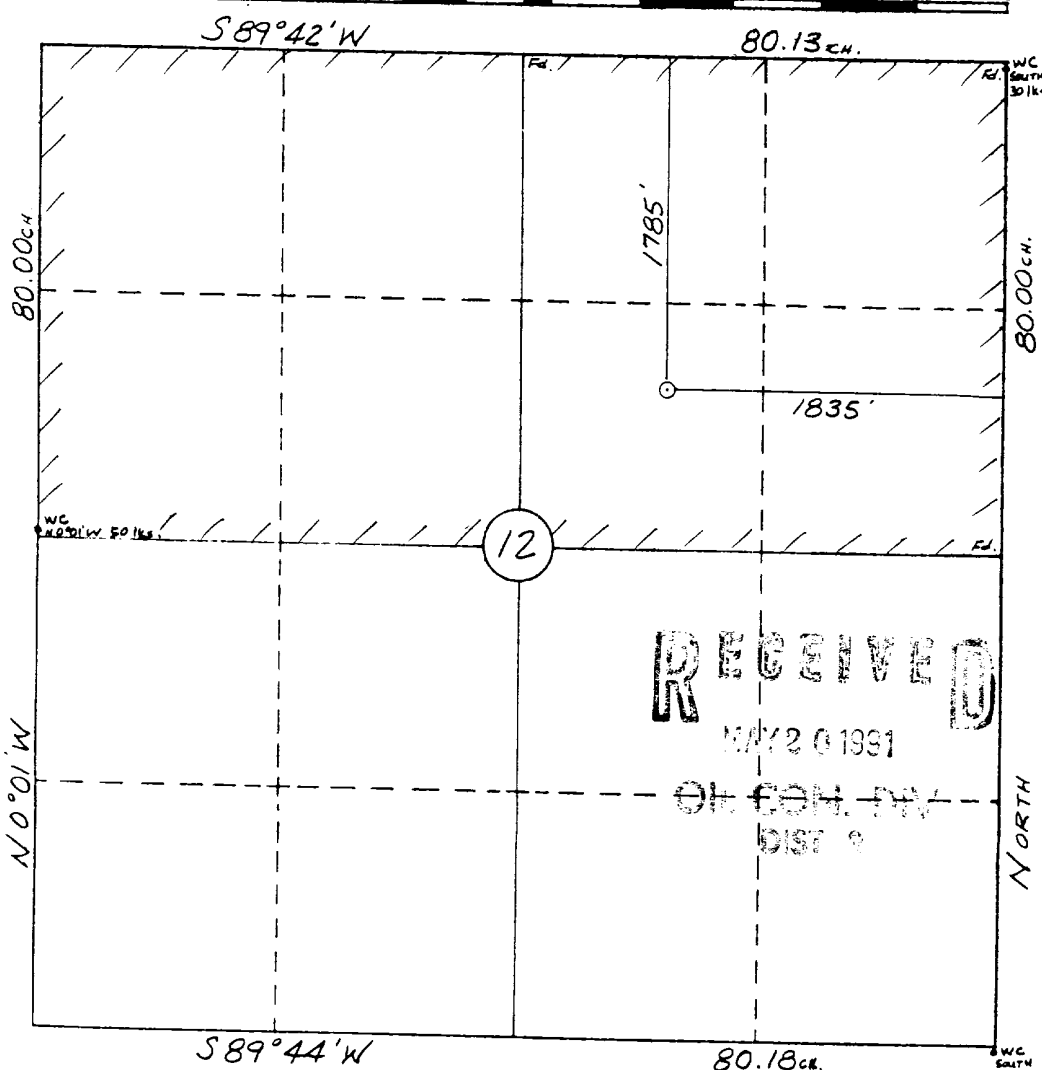
019 FARMINGTON, N.M.

WELL LOCATION AND ACREAGE DEDICATION PLAT

All Distances must be from the outer boundaries of the section

Operator BHP PETROLEUM (AMERICAS) INC.			Lease E.H. PIPKIN		Well No. 30
Unit Letter G	Section 12	Township 27 N	Range 11 W	County San Juan	
Actual Footage Location of Well: 1785 feet from the North line and 1835 feet from the East line					
Ground level Elev. 5877	Producing Formation Basin Fruitland Coal		Pool Fruitland Coal	Dedicated Acreage: 320 Acres	
<p>1. Outline the acreage dedicated to the subject well by colored pencil or hatchure marks on the plat below.</p> <p>2. If more than one lease is dedicated to the well, outline each and identify the ownership thereof (both as to working interest and royalty).</p> <p>3. If more than one lease of different ownership is dedicated to the well, have the interest of all owners been consolidated by communitization, unitization, force-pooling, etc.? <input type="checkbox"/> Yes <input type="checkbox"/> No If answer is "yes" type of consolidation _____</p> <p>If answer is "no" list the owners and tract descriptions which have actually been consolidated. (Use reverse side of this form if necessary.) _____</p> <p>No allowable will be assigned to the well until all interests have been consolidated (by communitization, unitization, forced-pooling, or otherwise) or until a non-standard unit, eliminating such interest, has been approved by the Division.</p>					

0 330 660 990 1320 1650 1980 2310 2640 2000 1500 1000 500 0



OPERATOR CERTIFICATION

I hereby certify that the information contained herein is true and complete to the best of my knowledge and belief.

Signature  
*Chuck Williams*  
Printed Name  
Chuck Williams  
Position  
Field Services Administrator  
Company  
BHP Petroleum (Americas) Inc  
Date  
April 1, 1991

SURVEYOR CERTIFICATION

I hereby certify that the well location shown on this plat was plotted from field notes of actual surveys made by me or under my supervision, and that the same is true and correct to the best of my knowledge and belief.

3-18-91

Date Surveyed  
William E. Mahrke II

Signature & Seal of Professional Surveyor

NEW MEXICO  
#8466

Certificate No. 8466

PROFESSIONAL LAND SURVEYOR

ADING POST QUADRANGLE  
XICO-SAN JUAN CO.  
SERIES (TOPOGRAPHIC)

UNITED STATES  
DEPARTMENT OF THE INTERIOR  
GEOLOGICAL SURVEY

