



STATE OF NEW MEXICO  
ENERGY, MINERALS AND NATURAL RESOURCES DEPARTMENT  
OIL CONSERVATION DIVISION

BRUCE KING  
GOVERNOR

POST OFFICE BOX 2088  
STATE LAND OFFICE BUILDING  
SANTA FE, NEW MEXICO 87504  
(505) 827-5800

September 11, 1991

Meridian Oil, Inc.  
P.O. Box 4289  
Farmington, New Mexico 87499-4289

Attention: Peggy Bradfield

**RECEIVED**  
SEP 13 1991  
**OIL CON. DIV.**  
**DIST. 3**

*Administrative Order NSL-3046*

Dear Ms. Bradfield:

Reference is made to your application dated August 2, 1991 for a non-standard gas well location for your Huerfano Unit Well No. 302 to be located 815 feet from the North line and 1515 feet from the West line (Unit C) of Section 31, Township 27 North, Range 10 West, NMPM, Undesignated Angels Peak - Gallup Associated Pool, San Juan County, New Mexico. Lots 1 and 2, NE/4, and E/2 NW/4 (N/2 equivalent) of said Section 31 shall be dedicated to the well forming a standard 327.90-acre gas spacing and proration unit for said pool.

By authority granted me under the provisions of Rule 2(c) of the Special Rules and Regulations for the Angels Peak - Gallup Associated Pool, as promulgated by Division Order No. R-5353, as amended, the above described unorthodox gas well location is hereby approved:

Sincerely,

WILLIAM J. LEMAY  
Director

WJL/MES/jc

cc: Oil Conservation Division - Aztec ✓  
USBLM - Farmington



STATE OF NEW MEXICO  
ENERGY AND MINERALS DEPARTMENT  
OIL CONSERVATION DIVISION  
AZTEC DISTRICT OFFICE

GARREY CAPRUTHERS  
GOVERNOR

1000 RIO BRAZOS ROAD  
AZTEC, NEW MEXICO 87410  
(505) 334-6178

Date: 8-24-91

*att: Mike Stagner*

Oil Conservation Division  
P.O. Box 2088  
Santa Fe, NM 87504-2088

Re: Proposed MC \_\_\_\_\_  
Proposed DHC \_\_\_\_\_  
Proposed NSL X \_\_\_\_\_  
Proposed SWD \_\_\_\_\_  
Proposed WFX \_\_\_\_\_  
Proposed PMX \_\_\_\_\_

Gentlemen:

I have examined the application dated 8-7-91  
for the Mudion Oil Inc. Horsehead Unit #300  
Operator Lease & Well No.

C 31-27K-200 and my recommendations are as follows:  
Unit, S-T-R

*Approved*

Yours truly,

*Garrey Capruthers*

**MERIDIAN OIL**

August 2, 1991

**RECEIVED**

AUG 07 1991

**OIL CON. DIV.  
DIST. 3**

Mr. William LeMay  
New Mexico Oil Conservation Division  
Post Office Box 2088  
Santa Fe, New Mexico 87503

Re: Huerfano Unit #302  
815'FNL, 1515'FWL  
Section 31, T-27-N, R-10-W, San Juan County, NM

Gentlemen:

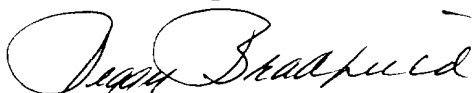
This is an application for administrative approval for non-standard location of the referenced well in the Angels Peak Gallup formation. This location is necessary due to the terrain features of this section as shown on the topographic map.

The following are items for your consideration:

1. Application for Permit to Drill as filed with the Bureau of Land Management.
2. Completed C-102 showing well location, proration unit and leases within the unit.
3. Plat showing offset operators/owners.
4. 7.5 minute topographic map of well location, showing the orthodox windows; and enlargement of the map to define topographic features.
5. Archaeological report.
6. This well may be deemed economically unfeasible due to incremental directional drilling costs of \$110,000.00.
7. Affidavit of notification of offset operators/owners; waiver from Bonneville Fuels.

Please let me know if you require further information.

Sincerely,



Peggy Bradfield  
Regulatory Affairs

encs.

xc: Bureau of Land Management, Farmington District  
New Mexico Oil Conservation Division, Aztec District

UNITED STATES  
DEPARTMENT OF THE INTERIOR  
BUREAU OF LAND MANAGEMENT

APPLICATION FOR PERMIT TO DRILL, DEEPEN, OR PLUG BACK

1a. TYPE OF WORK DRILL	5. LEASE NUMBER SF-078422
1b. TYPE OF WELL GAS	6. IF INDIAN, ALL. OR TRIBE NAME
2. OPERATOR MERIDIAN OIL INC.	7. UNIT AGREEMENT NAME HUERFANO UNIT
3. ADDRESS & PHONE NO. OF OPERATOR P O BOX 4289 FARMINGTON, NM 87499	8. FARM OR LEASE NAME HUERFANO UNIT
4. LOCATION OF WELL 815'FNL 1515'FWL	9. WELL NO. 302
10. FIELD, POOL, OR WILDCAT ANGEL PEAK GALLUP	11. SEC. T. R. M OR BLK. SEC. 31 T27N R10W NMPM
14. DISTANCE IN MILES FROM NEAREST TOWN 12 MILES S OF BLOOMFIELD	12. COUNTY SAN JUAN
	13. STATE NM
15. DISTANCE FROM PROPOSED LOCATION 815' TO NEAREST PROPERTY OR LEASE LINE.	16. ACRES IN LEASE 17. ACRES ASSIGNED TO WE 327.90
18. DISTANCE FROM PROPOSED LOCATION TO NEAREST WELL DR. 850' COMPL., OR APPLIED FOR ON THIS LEASE.	19. PROPOSED DEPTH 20. ROTARY OR CABLE TOOL 5920' ROTARY
21. ELEVATIONS (DF, FT, GR, ETC.) 6165'GL	22. APPROX. DATE WORK WILL START
23. PROPOSED CASING AND CEMENTING PROGRAM	
*SEE OPERATIONS PLAN	
24. AUTHORIZED BY: <u>W. D. [Signature] E/SWC</u> REG. DRILLING ENGR.	<u>6/17/91</u> DATE

PERMIT NO. \_\_\_\_\_ APPROVAL DATE \_\_\_\_\_  
APPROVED BY \_\_\_\_\_ TITLE \_\_\_\_\_ DATE \_\_\_\_\_

NOTE: THIS FORMAT IS ISSUED IN LIEU OF US BLM FORM 3160-3.  
ARCH REPORT SUBMITTED 05/30/91

**RECEIVED**  
AUG 07 1991  
OIL CON. DIV.  
DIST 3

Submit to Appropriate  
District Office  
State Lease - 4 copies  
Fee Lease - 3 copies

State of New Mexico  
Energy, Minerals and Natural Resources Department

CFH

Form C-10  
Revised 1-1

OIL CONSERVATION DIVISION

P.O. Box 2088  
Santa Fe, New Mexico 87504-2088

DISTRICT I  
P.O. Box 1980, Hobbs, NM 88240

DISTRICT II  
P.O. Drawer 00, Aztec, NM 88210

DISTRICT III  
1000 Rio Brazos Rd., Aztec, NM 87410

WELL LOCATION AND ACREAGE DEDICATION PLAT

All Distances must be from the outer boundaries of the section

Operator Meridian Oil Inc.			Lease Huerfano Unit		Well No. 302	
Unit/Letter C	Section 31	Township 27 North	Range 10 West	County San Juan		
Actual Footage Location of Well: 815 feet from the North line and 1515 feet from the West line						
Ground level Elev. 6165'		Producing Formation Gallup		Pool Angel Peak		
				Dedicated Acreage: 327.90 A		

1. Outline the acreage dedicated to the subject well by colored pencil or lacquer marks on the plat below.

2. If more than one lease is dedicated to the well, outline each and identify the ownership thereof (both as to working interest and royalty).

3. If more than one lease of different ownership is dedicated to the well, have the interest of all owners been consolidated by communitization, unitization, force-pooling, etc.?

☒ Yes ☐ No If answer is "yes" type of consolidation unitization

If answer is "no" list the owners and tract descriptions which have actually been consolidated. (Use reverse side of this form if necessary.)

No allowable will be assigned to the well until all interests have been consolidated (by communitization, unitization, force-pooling, or otherwise) or until a non-standard unit, encompassing such interest, has been approved by the Division.

1448.04		1320.00		2640.00	
815'		1515'		USA SF 078422	
2		31			
3					
4					
1457.28'		1320.00'			

OPERATOR CERTIFICATE

I hereby certify that the information herein is true and correct to the best of my knowledge and belief.

Signature  
Peggy Bradfield

Printed Name  
Regulatory Affairs

Position  
Meridian Oil Inc.

Company  
6-18-91

Date

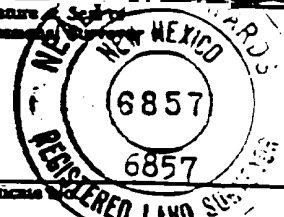
SURVEYOR CERTIFICATE

I hereby certify that the well location on this plat was plotted from field actual surveys made by me or my supervisor, and that the same is correct to the best of my knowledge and belief.

5-14-91

Date Surveyed

Signature of Surveyor  
Professional Surveyor



Well Name: 302 HUERFANO UNIT  
 Sec. 31 T27N R10W  
 ANGEL PEAK GALLUP

815' FNL 1315' FWL  
 SAN JUAN NEW MEXICO  
 Elevation 6165' GL

Formation tops: Surface- NACIMIENTO

Ojo Alamo- 763	Lewis- 2108	Mancos- 4453
Kirtland- 873	Mesaverde- 3173	Niobrara- 5648
Fruitland- 1538	Menefee- 3343	Juana Lopez- 5818
Pictured Cliffs- 1758	Pictured Lewis- 4178	

Total Depth- 5920  
 Longstring

Logging Program: Mud logs from 5000 to total depth.

Mud Program:	Interval	Type	Weight	Visc.	Fl. Loss
	0 - 200	Spud	8.4 - 8.9	40-50	no contr
	200 - 5920	Non-dispersed	8.4 - 9.5	30-60	no contr

Casing Program:	Hole Size	Depth Interval	Csg. Size	Weight	Grade
	12 1/4"	0 - 200	8 5/8"	24.0#	K-55
	7 7/8"	0 - 5920	4 1/2"	10.5#	K-55
Tubing Program:		0 - 5920	2 3/8"	4.7#	J-55

Float Equipment: 8 5/8" surface casing - saw tooth guide shoe. Centralizer will be run in accordance with Onshore Order #2.

4 1/2" production casing - float shoe on bottom. Three centralizers run every other joint above shoe. Two turbolizing type centralizers - one below and one into the base of the Ojo Alamo @ 873'. Standard centralizers thereafter every fourth joint up to the base of the surface pipe.

Wellhead Equipment: 8 5/8" x 4 1/2" x 2 3/8" x 11" 3000 psi xmas tree assem.

#### Cementing:

8 5/8" surface casing - cement with 211 sacks of Class "B" cement with 1/4# flocele/sack and 3% calcium chloride (248 cu. ft. of slurry, 200% excess to circulate to surface). WOC 12 hours. Test casing to 600 psi for 30 minutes.

4 1/2" production casing - First stage: Lead with 160 sacks of 65/35 Class "B" pozmix with 6% gel, 2% CaCl<sub>2</sub>, 5#/sack gilsonite, and 1/4#/sack Flocele. Tail with 240 sacks of Class "B" cement with 2% CaCl<sub>2</sub>, (570 cu. ft., 75% excess to circulate stage tool @ 4500'). Second stage: Lead with 290 sacks of 65/35 Class "B" pozmix with 6% gel, 2% CaCl<sub>2</sub>, 5#/sack gilsonite, and 1/4#/sack Flocele. Tail with 435 sacks of Class "B" cement with 2% CaCl<sub>2</sub>, (1025 cu. ft., 100% excess to circulate stage tool @ 2250'). Third stage: Lead with 290 sacks of 65/35 Class "B" pozmix with 6% gel, 2% CaCl<sub>2</sub>, 5#/sack gilsonite, and 1/4#/sack Flocele. Tail with 436 sacks of Class "B" cement with 2% CaCl<sub>2</sub>, (1030 cu. ft., 100% excess to circulate surface).

## BOP and Tests:

Surface to TD - 11" 2000 psi (minimum) double gate BOP stack (Reference Figure #1 and #2). Prior to drilling out surface casing, test rams to 500 psi for 30 minutes.

Completion - 6" 2000 psi (minimum) double gate BOP stack (Reference Figure #2). Prior to completion operations, test rams to 3000 psi for 15 minutes.

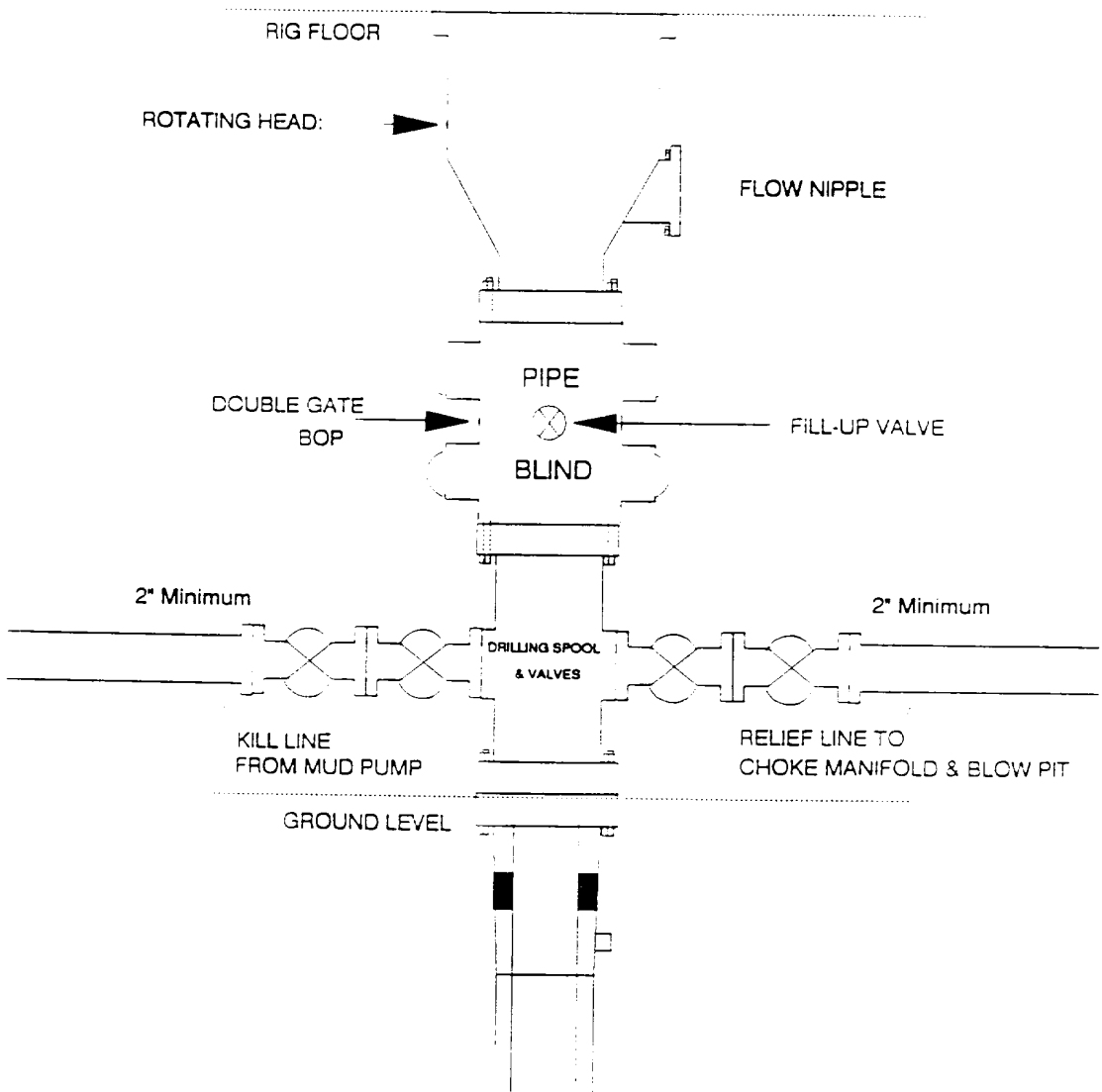
From surface to TD - choke manifold (Reference Figure #3).

Pipe rams will be actuated at least once each day and blind rams actuated once each trip to test proper functioning. An upper kelly cock valve with handle and drill string safety valves to fit each drill string will be maintained and available on the rig floor.

## Additional Information:

- \* This gas is dedicated.
- \* New casing will be utilized.
- \* Cementing Contractor will provide the BLM with a chronological log including the pump rate and pressure, and the slurry density and volume for all cement jobs.
- \* Pipe movement (either rotation or reciprocation) will be done if hole conditions permit.

**MERIDIAN OIL INC.**  
Drilling Rig  
BOP Configuration



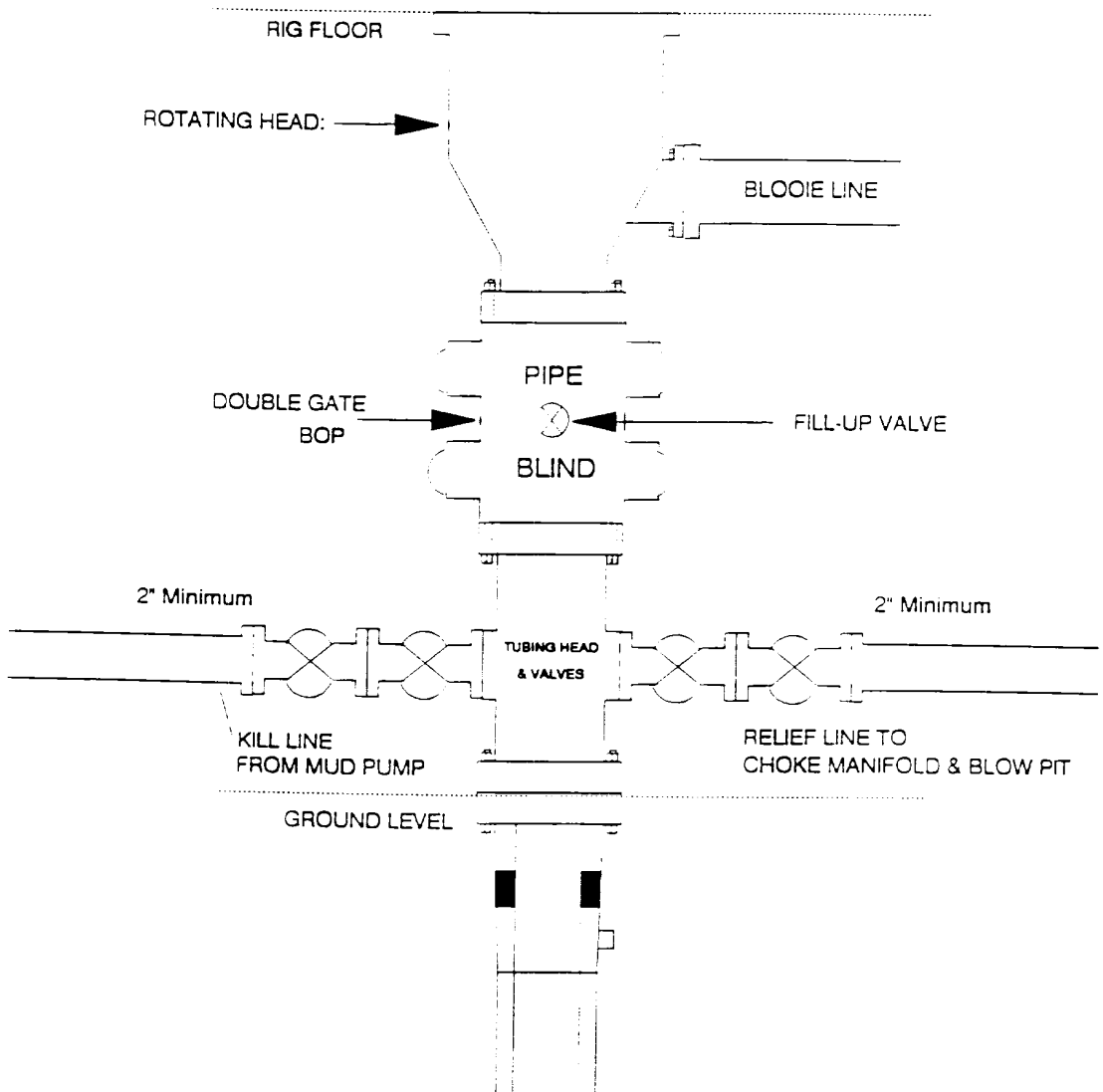
Minimum BOP installation for a typical Gallup well from surface to Total Depth. 11" Bore (10" Nominal), 2000psi minimum working pressure double gate BOP to be equipped with blind and pipe rams. A Schaffer Type 50 equivalent rotating head to be installed on the top of BOP. All equipment is 2000psi working pressure/or greater.

**Figure #1**



# MERIDIAN OIL INC.

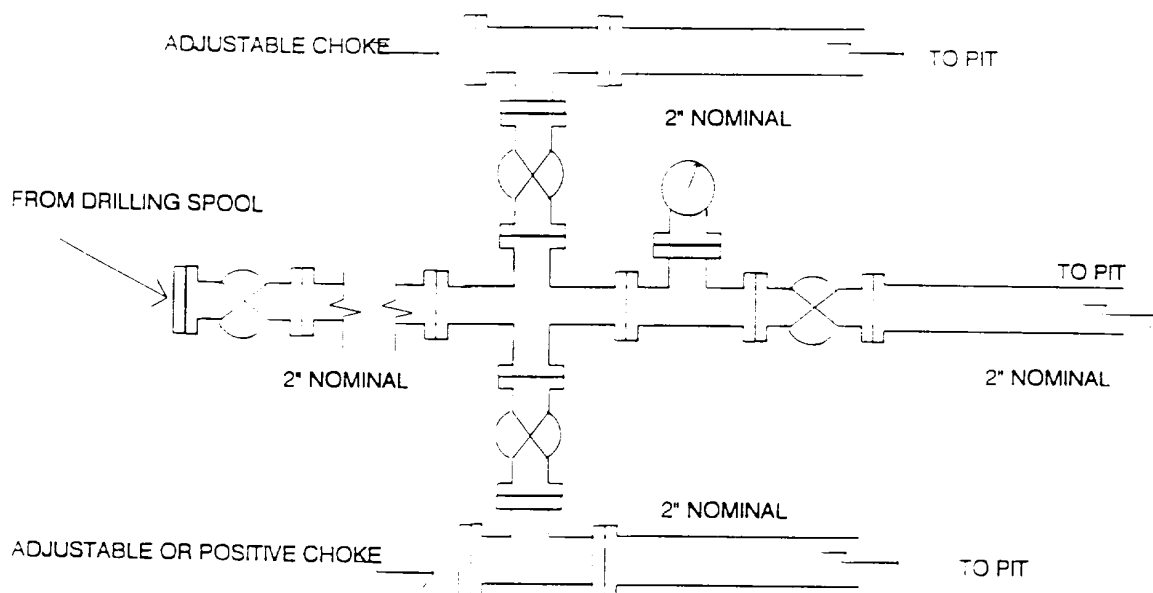
## Completion Rig BOP Configuration



Minimum BOP installation for Completion Operations. 7 1/16" Bore  
(6" Nominal), 2000psi minimum working pressure double gate BOP to  
be equipped with blind and pipe rams

**Figure #2**

**MERIDIAN OIL INC.**  
Typical Gallup Well  
Choke Manifold Configuration



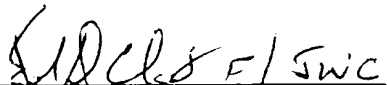
Minimum choke manifold installation for a typical Gallup well from surface to Total Depth. 2", 2000psi working pressure equipment with two chokes.

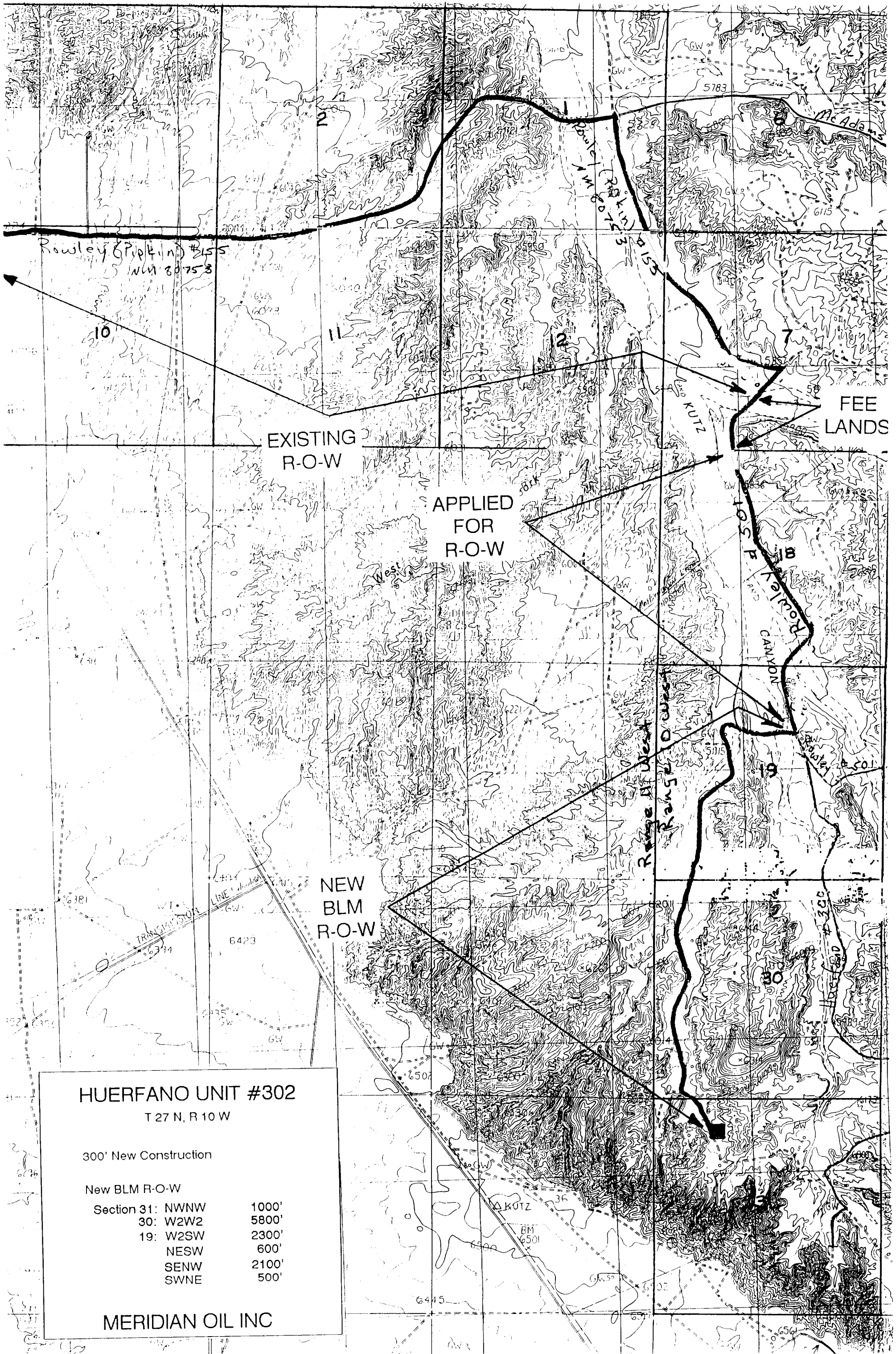
**Figure #3**

Multi-Point Surface Use Plan  
Meridian Oil Inc.  
Huerfano Unit #302

1. Existing Roads - Refer to Map No. 1. Existing roads used to access the proposed location will be properly maintained for the duration of the project. Bureau of Land Management right-of-way has been applied for as shown on Map No. 1.
2. Planned Access Road - Refer to Map No. 1. The required new access road is shown on Map No. 1. The gradient, shoulder, crowning and other design elements will meet or exceed those specified by the responsible government agency. The new access road surface will not exceed twenty feet (20') in width. No additional turnarounds or turnouts will be required. Upon completion of the project, the access road will be adequately drained to control soil erosion. Approximately 300' of access road will be constructed. Pipelines are indicated on Map No. 1A.
3. Location of Existing Wells - Refer to Map No. 1A.
4. Location of Existing and/or Proposed Facilities if Well is Productive -
  - a. On the Well Pad - Refer to Plat No. 1, anticipated production facilities plat.
  - b. Off the Well Pad - Anticipated facilities off the well pad will be applied for as required.
5. Location and Type of Water Supply - Water will be hauled by truck for the proposed project and will be obtained from Rowley #7 Bradenhead located in SW/4 Section 07, T-27-N, R-10-W, New Mexico.
6. Source of Construction Materials - If construction materials are required for the proposed project, such materials will be obtained from a commercial quarry.
7. Methods of Handling Waste Materials - All garbage and trash materials will be removed from the site for proper disposal. A portable toilet will be provided for human waste and serviced in a proper manner. If liquids are left in the reserve pit after completion of the project, the pit will be fenced until the liquids have had adequate time to dry. The location clean-up will not take place until such time as the reserve pit can be properly covered over to prevent run-off from carrying waste materials into the watershed. All earthen pits will be so constructed as to prevent leakage from occurring; no earthen pit will be located on natural drainage. Hazardous waste will be disposed of in accordance with Federal Regulations.
8. Ancillary Facilities - None anticipated.
9. Wellsite Layout - Refer to the location diagram (Plat No. 2) and to the wellsite cut and fill diagram (Plat No. 2A). The Blow Pit will be constructed with a 2'/160' grade to allow positive drainage to the Reserve Pit and prevent standing liquids in the Blow Pit.

10. Plans for Restoration of the Surface - After completion of the proposed project, the location will be cleaned and leveled. The location will be left in such a condition that will enable reseeding operations to be carried out. Seed mixture as designated by the responsible government agency will be used. The reseeding operations will be performed during the time period set forth by the responsible government agency. The permanent location facilities will be painted as designated by the responsible government agency.
11. Surface Ownership - Bureau of Land Management.
12. Other Information - Environmental stipulations as outlined by the responsible government agency will be adhered to. Refer to the archaeological report for a description of the topography, flora, fauna, soil characteristics, dwellings, historical and cultural sites.
13. Operator's Representative and Certification - Meridian Oil Regional Drilling Manager, Post Office Box 4289, Farmington, NM 87499, telephone (505) 326-9700. I hereby certify that I, or persons under my direct supervision, have inspected the proposed drill site and access route; that I am familiar with the conditions which presently exist; that the statements made in this plan are, to the best of my knowledge, true and correct; and that the work associated with the operations proposed herein will be performed by Meridian Oil Inc. and its contractors and subcontractors in conformity with this plan and the terms and conditions under which it is approved.

  
Regional Drilling Engineer



**HUERFANO UNIT #302**

T 27 N, R 10 W

300' New Construction

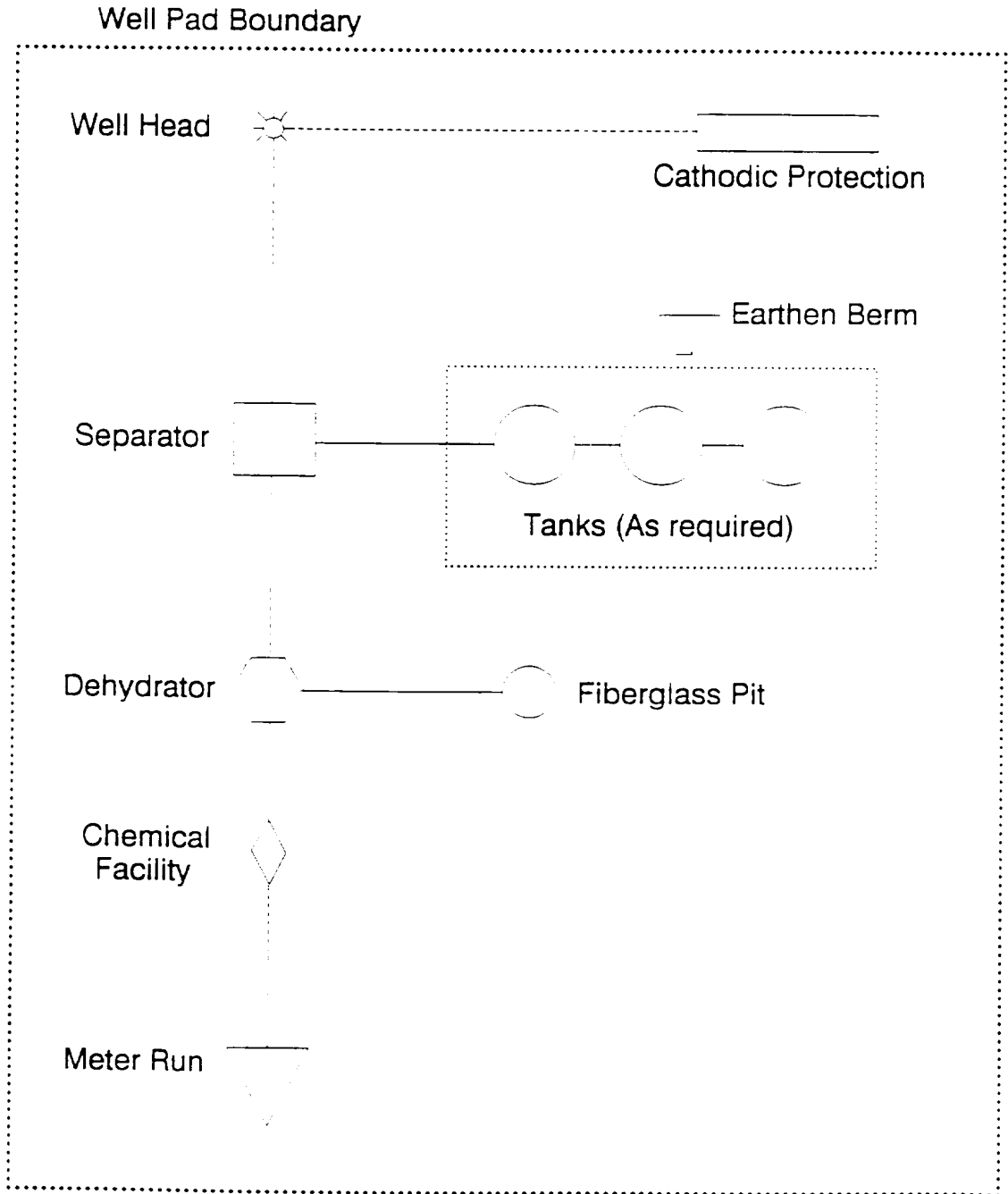
New BLM R-O-W

Section 31:	NWNW	1000'
30:	W2W2	5800'
19:	W2SW	2300'
	NESW	600'
	SENW	2100'
	SWNE	500'

**MERIDIAN OIL INC**



**MERIDIAN OIL INC.**  
**ANTICIPATED PRODUCTION FACILITIES**  
**FOR A GALLUP WELL**



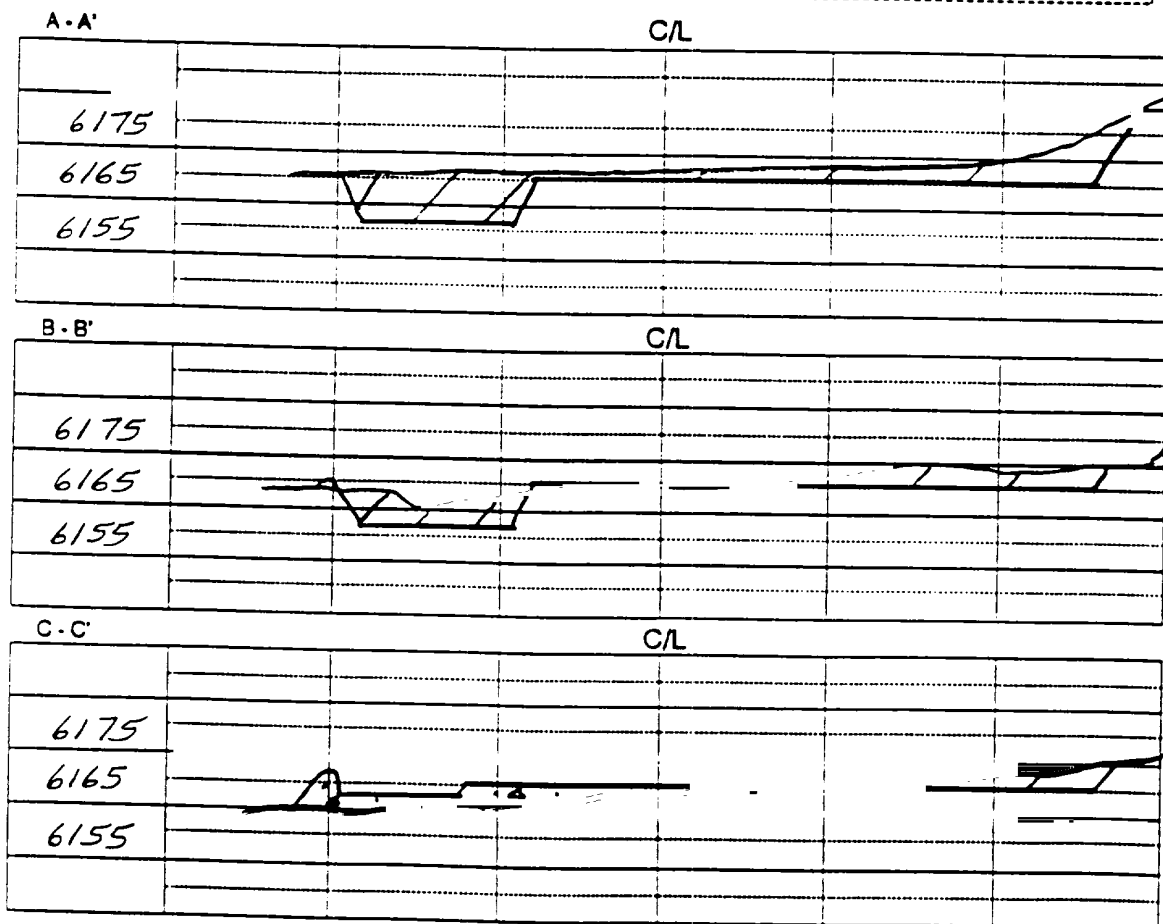
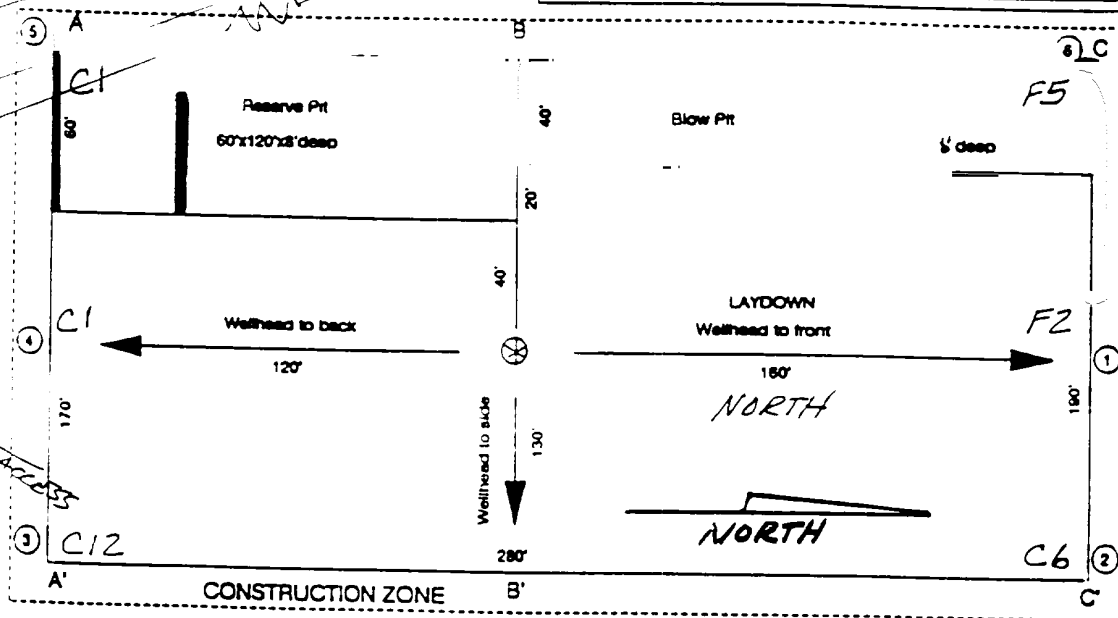
PLAT #1

FIGURE #4

# MERIDIAN OIL

## Figure #4

Name: HUERFANO UNIT # 302  
 Footage: 815 FNL 1515 FWL  
 Sec 31 T. 27 N.R. 10 W NMPM  
 Co. SAN JUAN SL NM  
 Elevation: 6165 Date: 5-14-91





Submit to Administrator  
District Office  
State Lease - 4 copies  
Fee Lease - 3 copies

State of New Mexico  
Energy, Minerals and Natural Resources Department

CEH

Form C-102  
Revised 1-1-91

OIL CONSERVATION DIVISION

P.O. Box 2088  
Santa Fe, New Mexico 87504-2088

DISTRICT I  
P.O. Box 1980, Hobbs, NM 88240

DISTRICT II  
P.O. Drawer 00, Artesia, NM 88210

DISTRICT III  
1000 Rio Arriba Rd., Aztec, NM 87410

WELL LOCATION AND ACREAGE DEDICATION PLAT

All Distances must be from the outer boundaries of the section

Operator

Meridian Oil Inc.

Lease

Huerfano Unit

Well No.

302

Unit Letter

Section

Township

Range

County

C

31

27 North

10 West

NMPM

San Juan

Actual Footage Location of Well:

815

feet from the

North

line and

1515

feet from the

West

line

Ground level Elev.

Producing formation

Pool

6165'

Gallup

Angel Peak

Dedicated Acreage:

327.90

Ac

1. Outline the acreage dedicated to the subject well by colored pencil or become started on the plat below.

2. If more than one lease is dedicated to the well, outline each and identify the ownership thereof (both as to working interest and royalty).

3. If more than one lease of different ownership is dedicated to the well, have the interest of all owners been consolidated by commutation, unitization, force-pooling, etc.?

☒ Yes

☐ No

If answer is "yes" type of consolidation

unitization

If answer is "no" list the owners and tract descriptions which have actually been consolidated. (Use reverse side of this form if necessary).

No allowable will be assigned to the well until all interests have been consolidated (by commutation, unitization, force-pooling, or otherwise) or until a non-standard unit, commencing such interest, has been approved by the Division.

OPERATOR CERTIFICATION

I hereby certify that the info contained herein is true and correct best of my knowledge and belief.

*Peggy Bradfield*  
Signature

Peggy Bradfield

Printed Name

Regulatory Affairs

Position

Meridian Oil Inc.

Company

Date

6-18-91

SURVEYOR CERTIFICATION

I hereby certify that the well location on this plat was obtained from field actual surveys made by me or my supervisor, and that the same is correct to the best of my knowledge and belief.

5-14-91

Date Surveyed

*[Signature]*  
Signature of Surveyor  
Professional Surveyor



Carroll County

RECEIVED

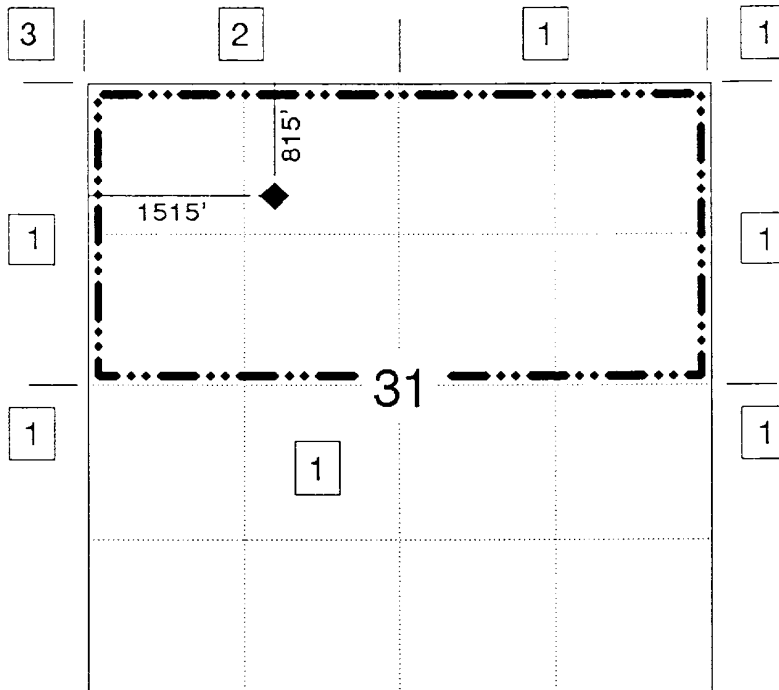
AUG 07 1991

OIL CON. DIV.  
DIST. 3

# OFFSET OPERATOR PLAT

## HUERFANO UNIT #302

Township 27 North, Range 10 West



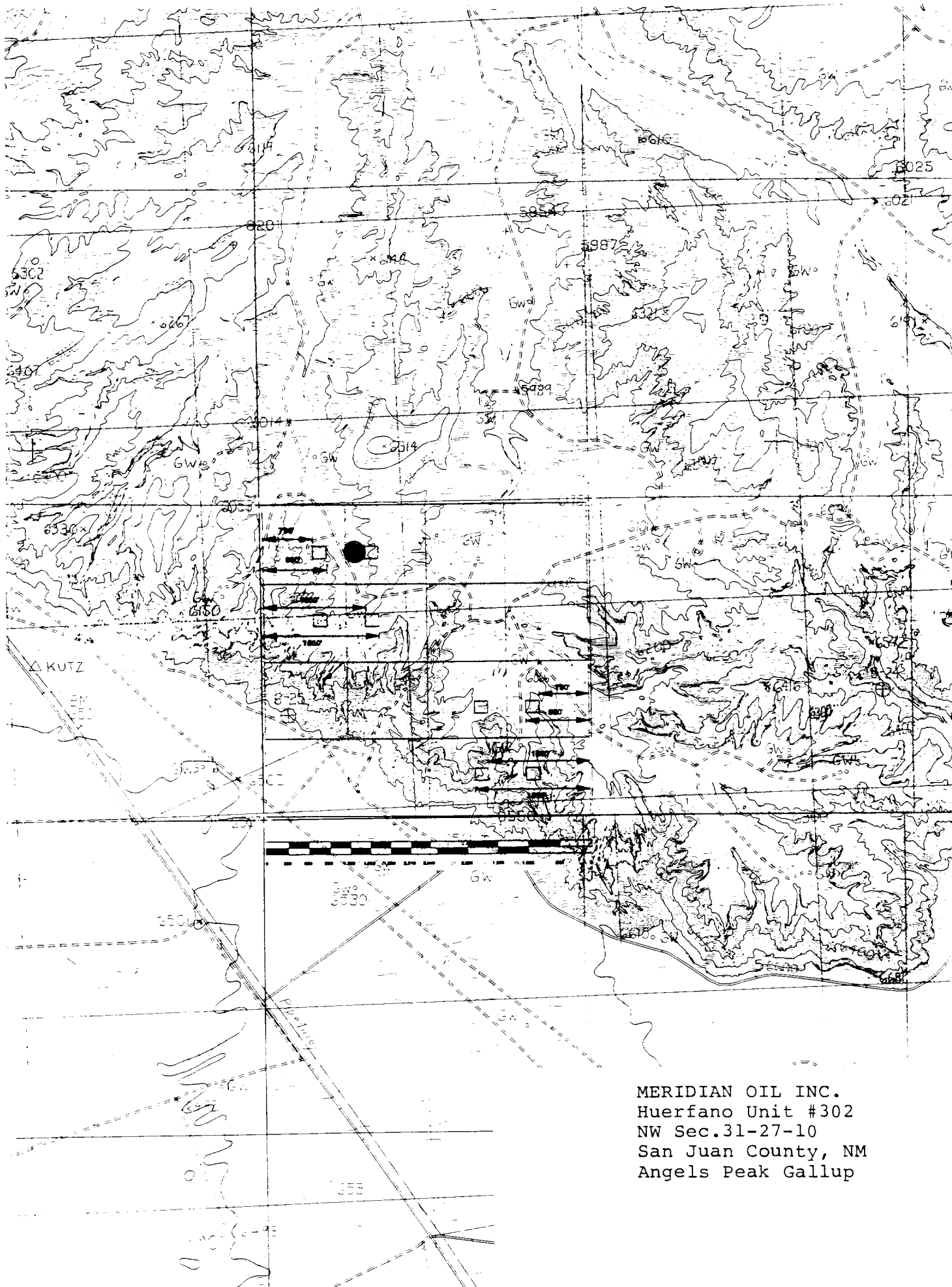
1) Meridian Oil Inc.

2) Parker & Parley Petroleum Company

600 W Illinois, Ste 103, Midland, TX 79701

3) Bonneville Fuels Corporation

1600 Broadway, Ste 1110, Denver, CO 80202



MERIDIAN OIL INC.  
Huerfano Unit #302  
NW Sec. 31-27-10  
San Juan County, NM  
Angels Peak Gallup



**MERIDIAN OIL**

JUN 5 1991

An Archaeological Survey of the Proposed **FARMINGTON, NEW MEXICO**  
Huerfano Unit No. 302 Well Pad and Access Road **Construction Supervisor**  
near Angel Peak, San Juan County, New Mexico  
(T27N, R10W, Section 31, 815' F/NL, 1515' F/WL)

for

Meridian Oil Inc.

by

Scott Wilcox  
Supervisory Archaeologist

Submitted by

Byron P. Johnson  
Director

DIVISION OF CONSERVATION ARCHAEOLOGY

Technical Report No. 2491  
San Juan County Archaeological Research Center and Library

May 30, 1991

## ABSTRACT

On May 21, 1991, the Division of Conservation Archaeology of the San Juan County Museum Association completed an archaeological survey of the proposed Huerfano Unit No. 302 well pad and access road for Meridian Oil Inc. The survey area is located at the south end of Kutz Canyon near Angel Peak in San Juan County, New Mexico and is under the jurisdiction of the Bureau of Land Management. Approximately 7.9 acres were intensively inventoried.

No cultural resources were found. We recommend archaeological clearance for the proposed Huerfano Unit No. 302 well pad and access road as described in this report.

## INTRODUCTION

On May 21, 1991, the Division of Conservation Archaeology (DCA) of the San Juan County Museum Association conducted an archaeological survey for Meridian Oil Inc. of Farmington, New Mexico. Charles Werner requested the survey on May 17, 1991 and administered the project for Meridian Oil Inc. Byron P. Johnson administered the project for DCA.

In recognition of the limited, nonrenewable nature of archaeological remains, the federal government has enacted legislation that is designed to conserve and protect these resources. The principal legislation includes the Antiquities Act of 1906 (PL 52-209), the National Historic Preservation Act of 1966 (PL 89-665) and as amended in 1976 and 1980 (PL 96-515), the National Environmental Policy Act of 1969 (PL 91-852), the 1971 Executive Order No. 11593, the Historic and Archaeological Data Preservation Act of 1974 (PL 93-291), and the Archaeological Resources Protection Act of 1979 (PL 96-95). In addition, the Navajo Nation and the states of Arizona, New Mexico, Utah, and Colorado have enacted laws to ensure compliance with federal legislation and to protect archaeological resources within their jurisdiction. Work undertaken in the course of this project complies with these statutes and is governed by the stipulations of Cultural Resource Use Permit 7-2920-91-Z (NM BLM).

DCA archaeologist Scott Wilcox surveyed the project area for cultural remains.

## METHODS

The area was surveyed by walking straight line transects spaced 10 m apart. A construction zone of 50 ft and a cultural resource buffer zone of 100 ft were surveyed around the proposed well pad. A 200 x 200 ft buffer zone was surveyed around the access road intersection.

The archaeologist recorded all cultural remains. Those whose information potential exceeded what could be extracted during the survey phase were assigned site status. Other cultural remains were documented as isolated loci (IL). Pertinent environmental data were also recorded.

## PREVIOUSLY RECORDED SITES

In addition to field inspection, the archaeologist conducted a search of the records at DCA and at the Bureau of Land Management (BLM) Farmington Resource Area office on May 20, 1991 to determine if any sites had been recorded in the project area. Site records required by the BLM and the New Mexico Historic Preservation Division were completed.

The records check revealed seven previously recorded sites within one mile of the proposed project area. Those sites are shown on BLM Supplement 1 A which is provided to the BLM only. None of the sites are within 1000 ft of the project.

## PROJECT DESCRIPTION

The Proposed Huerfano Unit No. 302 Well Pad and Access Road (Figures 1 and 2)

Legal Description: T27N, R10W, Section 31, 815' F/NL, 1515' F/WL  
W 1/2 NE 1/4 NW 1/4  
N.M.P.M., San Juan County, New Mexico

Map Source: U.S.G.S. 7.5' East Fork Kutz Canyon, New Mexico (1985 Provisional Edition)

Land Jurisdiction: Bureau of Land Management

Project Area: 330' x 380' (well pad and construction zone)  
35' x 300' (access road)

Surveyed Area: 530' x 580' (well pad and construction zone with buffer, includes access)  
200' x 200' (t-intersection)  
7.9 Acres

Environment: The proposed Huerfano Unit No. 302 well pad is located at the upper end of Kutz Canyon on a relatively flat area of the floodplain. Topography surrounding the well pad can be characterized as badlands and consists of steep clay-shale hills.

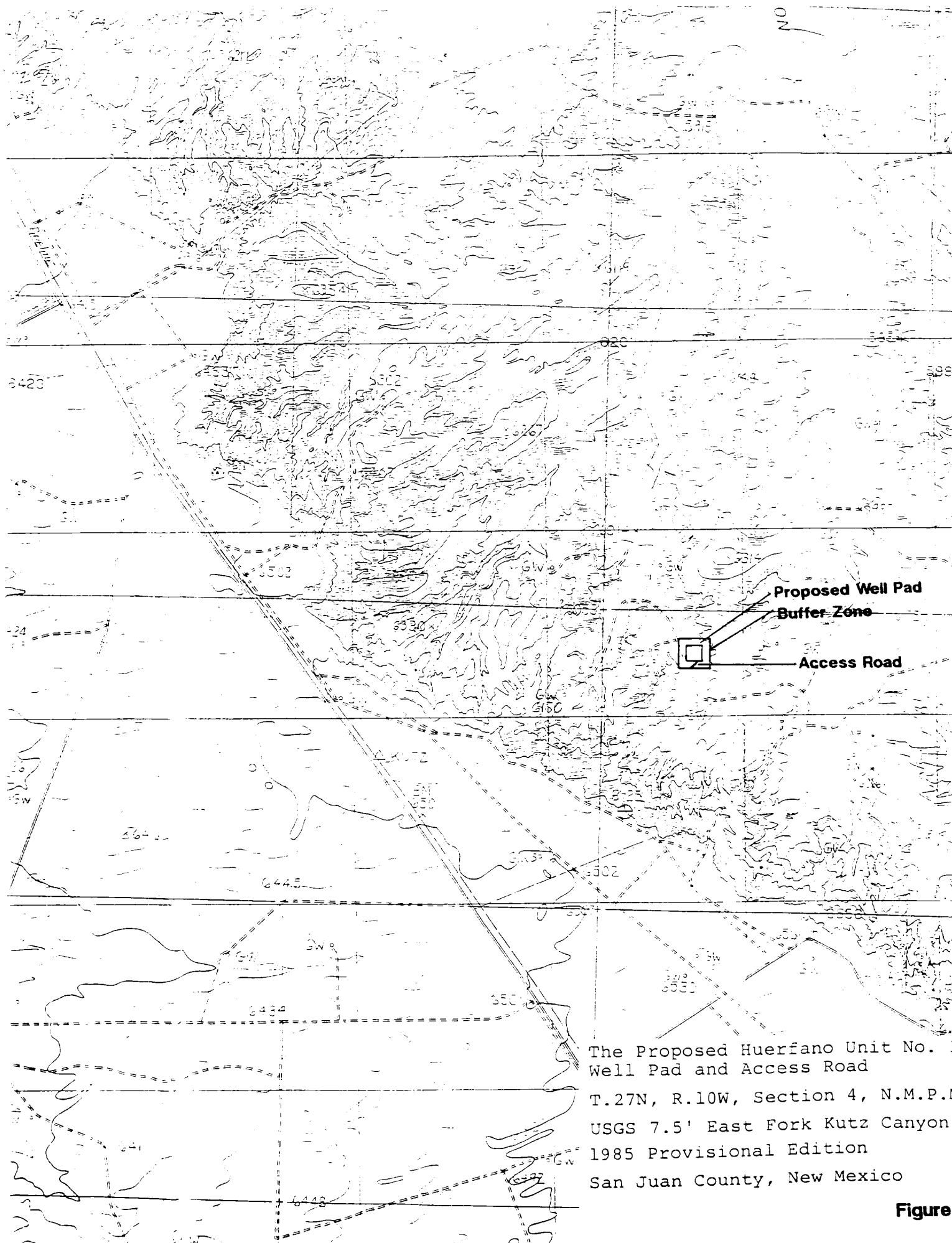
Vegetation consists of fourwing saltbush (Atriplex canescens), sagebrush (Artemisia tridentata), grasses, annuals, narrowleaf yucca (Yucca angustissima), and greasewood (Sarcobatus vermiculatus).

The access road was entirely within the buffer zone of the well pad.

Cultural Resources: No cultural resources were found during the survey.

Recommendations: We recommend archaeological clearance for the proposed Huerfano Unit No. 302 well pad and access road.



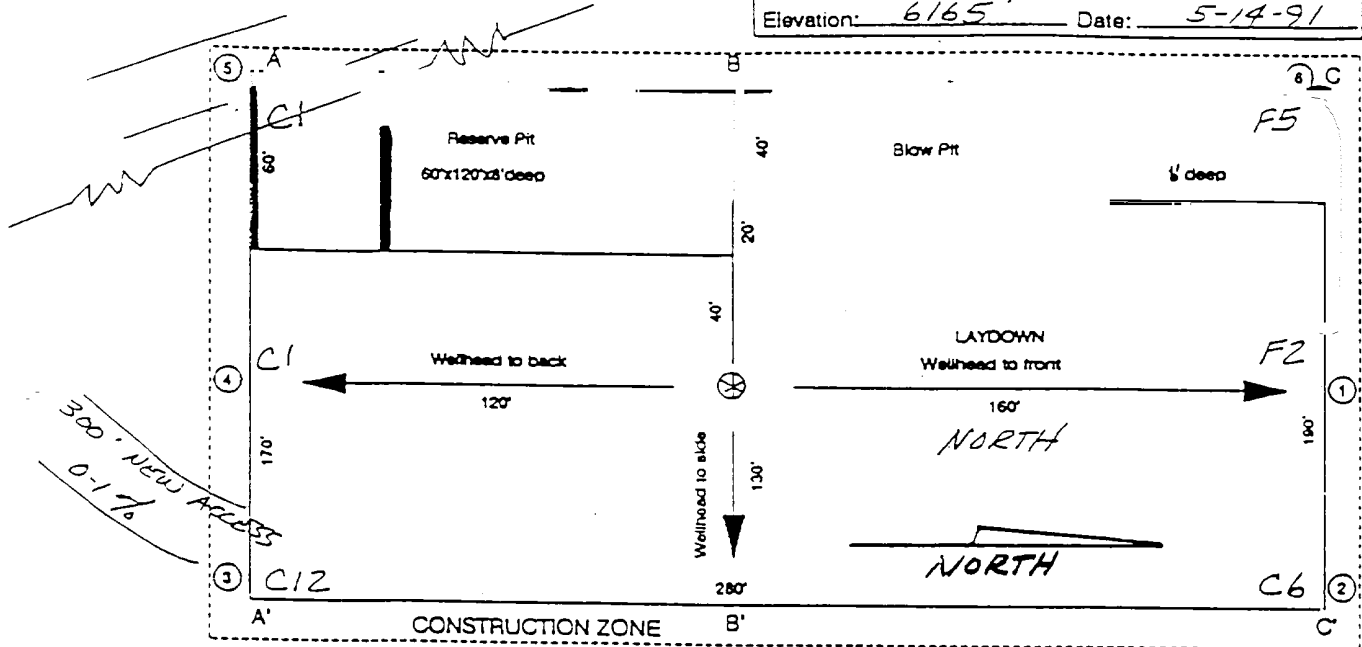


The Proposed Huerfano Unit No. 1 Well Pad and Access Road  
T.27N, R.10W, Section 4, N.M.P.M  
USGS 7.5' East Fork Kutz Canyon  
1985 Provisional Edition  
San Juan County, New Mexico

Figure

# MERIDIAN OIL

Name: HUERFANO UNIT # 302  
 Footage: 815 FNL 1515 FNL  
 Sec 31 T. 27 N.R. 10 W NMPM  
 Co. SAN JUAN St. NM  
 Elevation: 6165 Date: 5-14-91



A - A'		C/L	
6175			
6165			
6155			
B - B'		C/L	
6175			
6165			
6155			
C - C'		C/L	
6175			
6165			
6155			

Huerfano Unit #302  
815'FNL, 1515'FWL Section 31, T-27-N, R-10-W  
San Juan County, New Mexico

I hereby certify that the following offset operators/owners have been mailed notification of our application for non-standard location to drill the subject well.

Parker & Parsley Petroleum  
600 W. Illinois, Suite 103  
Midland, TX 79701

Bonneville Fuels Corp  
1600 Broadway, Suite 1110  
Denver, CO 80202

A handwritten signature in cursive script that reads "Peggy A. Bradfield". The signature is written in dark ink and is positioned above the printed name.

Peggy A. Bradfield

San Juan County  
State of New Mexico

July 24, 1991

My commission expires August 17, 1992

# MERIDIAN OIL


To: Offset Owners/Operators

This is notification that Meridian Oil Inc. is seeking administrative approval for a non-standard location for the Huerfano Unit #302, located at 815'FNL, 1515'FWL, Section 31, T-27-N, R-10-W, San Juan County, New Mexico, due to topographic reasons.

A copy of the C-102 showing the location of this well and a topographic map are enclosed.

A copy of this application is being submitted to all offset owners/operators by certified mail with a request that you furnish the New Mexico Oil Conservation Division, PO Box 2088, Santa Fe, NM 87501 with a Waiver of Objection, and return one copy to this office.

Sincerely yours,



Peggy Bradfield

encl.

## WAIVER

Bonneville Fuels Corporation hereby waives objection to Meridian Oil Inc.'s application for a non-standard location for their Huerfano Unit #302 as proposed above.

By: 

President

Date: July 30, 1991

xc: Parker & Parsley Pet., 600 W. Illinois, Ste#103, Midland, TX  
Bonneville Fuels, 1600 Broadway, Ste 1110, Denver, CO