

UNITED STATES
DEPARTMENT OF THE INTERIOR
BUREAU OF LAND MANAGEMENT

SUBMIT IN TRIPLICATE*
(Other instructions on
reverse side)

FORM APPROVED.
Budget Bureau No. 1004-0136
Expires August 31, 1985

APPLICATION FOR PERMIT TO DRILL, DEEPEN, OR PLUG BACK

1a. TYPE OF WORK

DRILL ☒

DEEPEN ☐

PLUG BACK ☐

b. TYPE OF WELL

OIL WELL ☐

GAS WELL ☒

OTHER

SINGLE ZONE ☒

MULTIPLE ZONE ☐

2. NAME OF OPERATOR

TEXACO EXPLORATION AND PRODUCTION INC. 023641

3. ADDRESS OF OPERATOR

P.O. Box 3109, Midland, TX 79702

4. LOCATION OF WELL (Report location clearly and in accordance with any State requirements.)

At surface

945' FSL & 1595' FWL, UNIT LETTER N, SE/SW

At proposed prod. zone

SAME AS SURFACE

14. DISTANCE IN MILES AND DIRECTION FROM NEAREST TOWN OR POST OFFICE*

9 MILES SOUTH OF BLOOMFIELD, NM

15. DISTANCE FROM PROPOSED*
LOCATION TO NEAREST
PROPERTY OR LEASE LINE, FT.
(Also to nearest drig. unit line, if any)

945'

16. NO. OF ACRES IN LEASE

320

17. NO OF ACRES ASSIGNED
TO THIS WELL

S/320

18. DISTANCE FROM PROPOSED LOCATION*
TO NEAREST WELL, DRILLING, COMPLETED,
OR APPLIED FOR, ON THIS LEASE, FT.

240'

19. PROPOSED DEPTH

2330'

20. ROTARY OR CABLE TOOLS

ROTARY

21. ELEVATIONS (Show Whether DF, RT, GR, ETC.)

GR-6271' This section is subject to technical and

22. APPROX. DATE WORK WILL START

AUGUST 07, 1992

23. PROPOSED CASING AND CEMENTING PROGRAM

SIZE OF HOLE	SIZE OF CASING	WEIGHT PER FOOT	SETTING DEPTH	QUANTITY OF CEMENT
12 1/4	8 5/8	24#	300'	340 SACKS
7 7/8	5 1/2	15.5#	2330'	460 SACKS

SEE ATTACHED DRILLING PROGRAM FOR CEMENT AND MUD PROGRAMS.

RECEIVED
JUL 28 1992
OIL CON. DIV
DIST. 3

IN ABOVE SPACE DESCRIBE PROPOSED PROGRAM: If proposal is to deepen or plug back, give data on present productive zone and proposed new productive zone. If proposal is to drill or deepen directionally, give pertinent data on subsurface locations and measured and true vertical depths. Give blowout preventer program, if any.

24.

SIGNED

C.P. Baahum/cwh

TITLE

DRILLING OPERATIONS MANAGER

DATE

07-07-92

(This space for Federal or State office use)

PERMIT NO.

APPROVAL DATE

APPROVED
AS AMENDED

APPROVED BY

TITLE

DATE

JUL 24 1992

CONDITIONS OF APPROVAL, IF ANY:

AREA MANAGER

*See Instructions On Reverse Side

TITLE 18 U.S.C. SECTION 1001, makes it a crime for any person knowingly and willfully to make to any department or agency of the United States any false, fictitious or fraudulent statements or representations as to any matter within its jurisdiction.

Submit to Appropriate
District Office
State Lease - 4 copies
Fee Lease - 3 copies

State of New Mexico
Energy, Minerals and Natural Resources Department

RECEIVED
Form C-102
Revised 1-1-99

OIL CONSERVATION DIVISION

P.O. Box 2088
Santa Fe, New Mexico 87504-2088

52 JUL -92 PM 1:12

055 11 11 AM N.M.

DISTRICT I
P.O. Box 1980, Hobbs, NM 88240

DISTRICT II
P.O. Drawer DD, Artesia, NM 88210

DISTRICT III
1000 Rio Brazos Rd., Aztec, NM 87410

WELL LOCATION AND ACREAGE DEDICATION PLAT

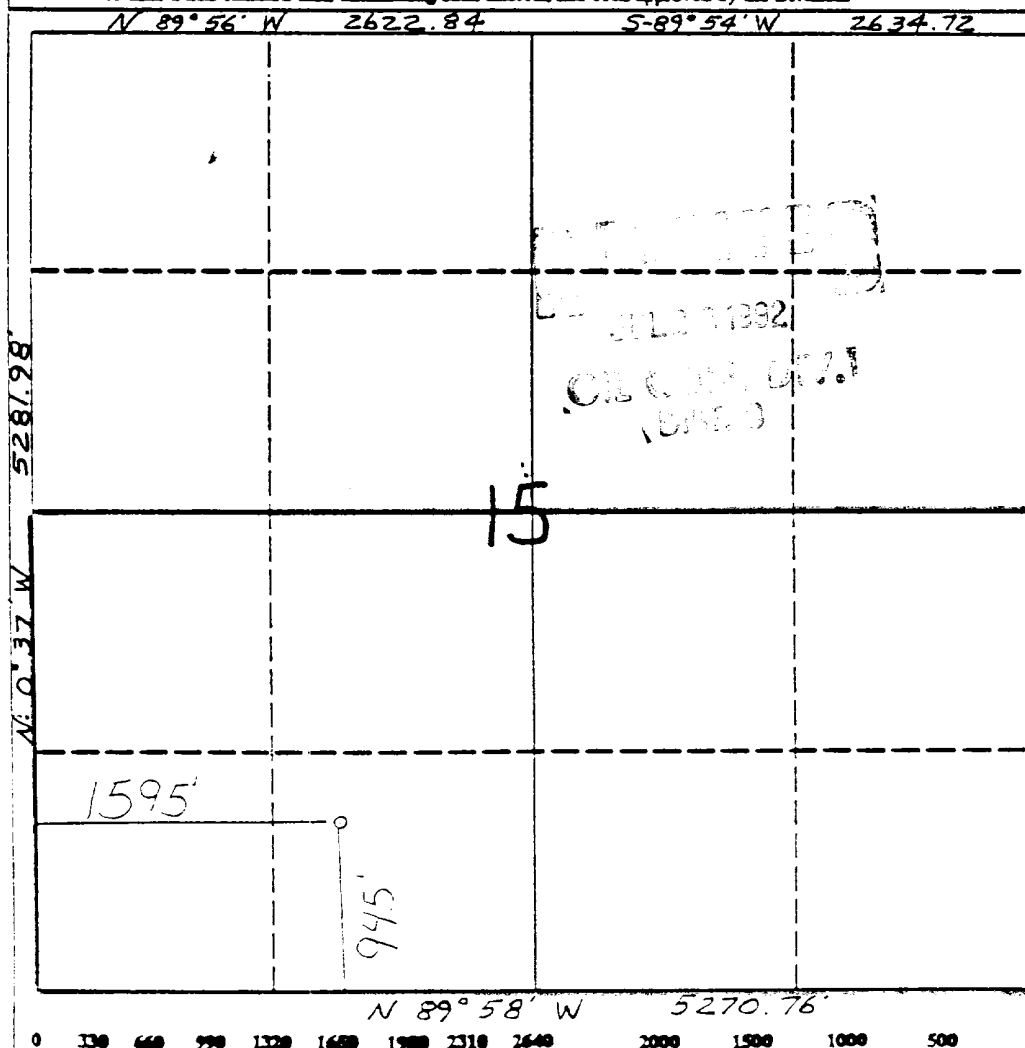
All Distances must be from the outer boundaries of the section

Operator Texaco EXPLORATION AND PRODUCTION INC.		Lease Marshall A		Well No. 8
Unit Letter N	Section 15	Township 27 North	Range 9 West	County San Juan

Actual Footage Location of Well:

945	feet from the	South	line and	1595	feet from the	West	line
Ground level Elev. 6271'	Producing Formation Fruitland COAL		Pool Basin Fruitland Coal		Dedicated Acreage: 5/320 Acres		

- Outline the acreage dedicated to the subject well by colored pencil or hectare marks on the plat below.
- If more than one lease is dedicated to the well, outline each and identify the ownership thereof (both as to working interest and royalty).
- If more than one lease of different ownership is dedicated to the well, have the interest of all owners been consolidated by communitization, unitization, force-pooling, etc.?
☐ Yes ☐ No If answer is "yes" type of consolidation _____
If answer is "no" list the owners and tract descriptions which have actually been consolidated. (Use reverse side of this form if necessary.) _____
No allowable will be assigned to the well until all interests have been consolidated (by communitization, unitization, forced-pooling, or otherwise) or until a non-standard unit, eliminating such interest, has been approved by the Division.



OPERATOR CERTIFICATION

I hereby certify that the information contained herein is true and complete to the best of my knowledge and belief.

Signature
Royce Mariott
Printed Name
Royce Mariott
Position
Division Surveyor
Company
TEXACO E&P Inc
Date
7-6-92

SURVEYOR CERTIFICATION

I hereby certify that the well location shown on this plat was plotted from field notes of actual surveys made by me or under my supervision, and that the same is true and correct to the best of my knowledge and belief.

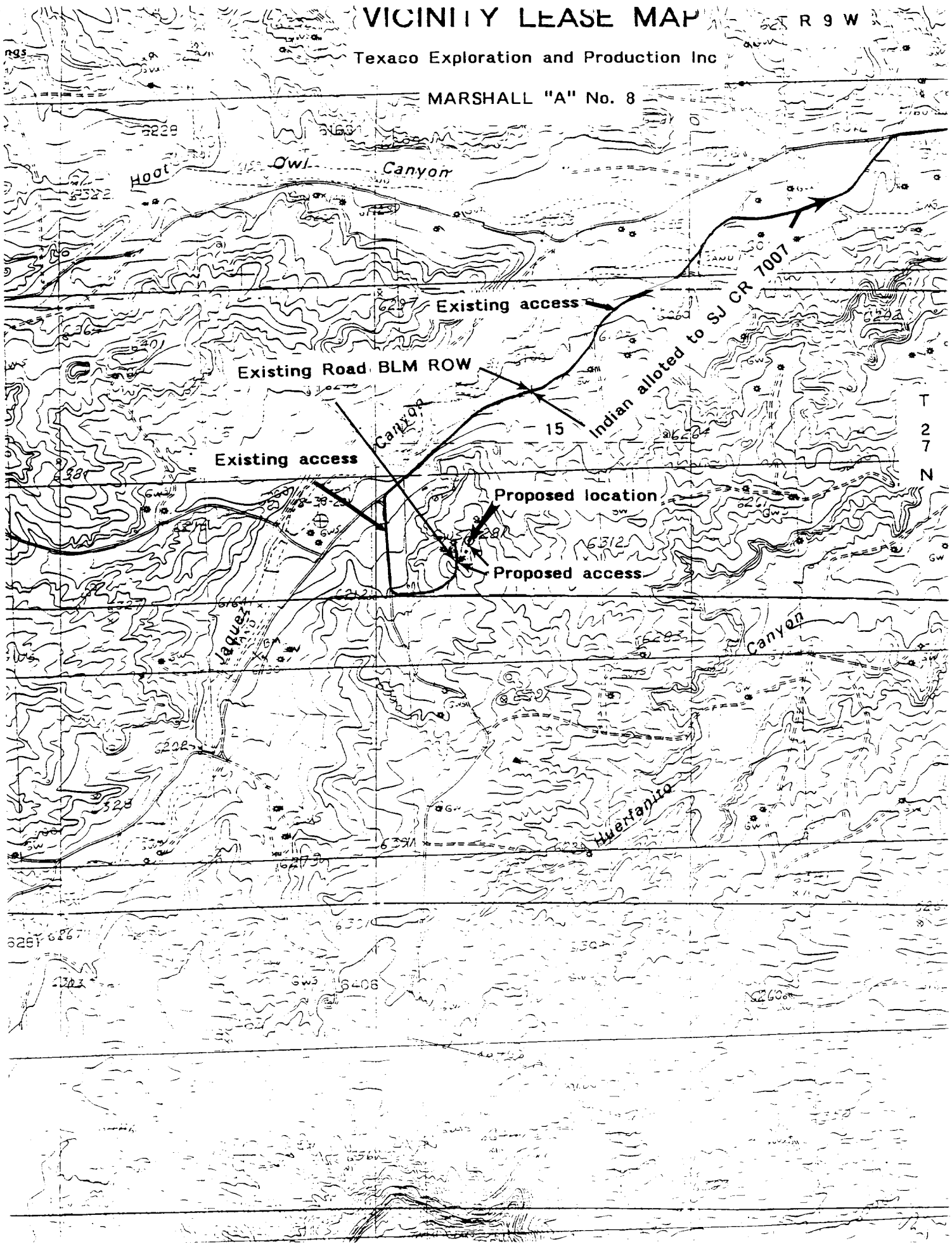
Date Surveyed
Near
Signature
Professional Surveyor
6857
Certificate No.
6857

VICINITY LEASE MAP

R 9 W

Texaco Exploration and Production Inc

MARSHALL "A" No. 8



T
2
7
N