



STATE OF NEW MEXICO  
ENERGY, MINERALS AND NATURAL RESOURCES DEPARTMENT  
OIL CONSERVATION DIVISION

BRUCE KING  
GOVERNOR

December 9, 1994

2040 S. PACHECO  
SANTA FE, NEW MEXICO 87505  
(505) 827-7131

Meridian Oil, Inc.  
P.O. Box 4289  
Farmington, NM 87499-4289

Attention: Peggy Bradfield

*Administrative Order NSL-3443*

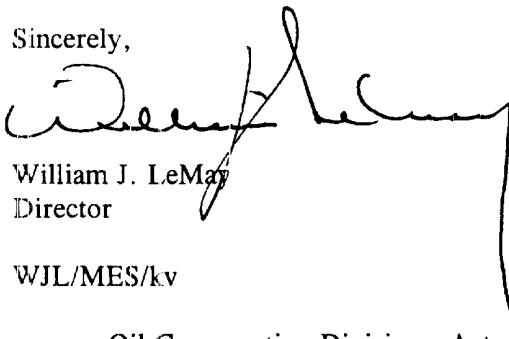
Dear Ms. Bradfield:

Reference is made to your application dated September 15, 1994 for an unorthodox gas well location for both the Blanco-Mesaverde and Basin-Dakota Pools for your proposed Huerfanito Unit Well No. 78M (API No. **30-045-28971**) to be drilled 1545 feet from the South line and 1270 feet from the East line (Unit I) of Section 36, Township 27 North, Range 9 West, NMPM, San Juan County, New Mexico. It is our understanding that production from both zones are to be downhole commingled under the authority of Division Order No. R-9887, dated April 27, 1993.

The existing standard 320-acre gas spacing and proration units in both the Blanco-Mesaverde and Basin Dakota Pools comprising the E/2 of said Section 36, which are both currently dedicated to Meridian's Huerfanito Unit Well No. 78 (API No. **30-045-06177**), located at a standard gas well location 930 feet from the North line and 1650 feet from the East lines (Unit B) of said Section 36 are to be dedicated to said well.

By the authority granted me under the provisions of Rule 2(c) of the 'Special Rules and Regulations for the Blanco-Mesaverde Pool' and the 'Basin-Dakota Pool', as promulgated by Division Order No. R-8170, as amended, the above-described unorthodox gas well location is hereby approved.

Sincerely,



William J. LeMay  
Director

WJL/MES/kv

cc: Oil Conservation Division - Aztec  
New Mexico State Land Office - Santa Fe  
File Case 10701

RECEIVED  
DEC 15 1994

OIL CON. DIV.  
DIST. 3

## **Ernie Busch**

---

**From:** Ernie Busch  
**To:** Mike Stogner  
**Subject:** MERIDIAN OIL INC (NSL)  
**Date:** Thursday, November 03, 1994 8:22AM  
**Priority:** High

HUERFANO UNIT #76M  
I-36-27N-09W  
1545' FSL; 1270' FEL  
RECOMMEND: APPROVAL

SR. NO.	POD IDN	POD LOCATION TWP RNS SFC UI	POD SDIV TYP	LOT NUM	TRCT NUM	OGRID CODE	OGRID NAME
5268	2582630	27N 07W 24 J	G N/P	10		023708	UNION OIL CO OF CALIFORNIA
5269	2566850	27N 07W 24 J	W N/P	10		023708	UNION OIL CO OF CALIFORNIA
5270	2582610	27N 07W 24 J	O N/P	10		023708	UNION OIL CO OF CALIFORNIA
5271	2575650	27N 07W 24 K	W N/P	11		023708	UNION OIL CO OF CALIFORNIA
5272	2557510	27N 07W 24 K	O N/P	11		023708	UNION OIL CO OF CALIFORNIA
5273	2575630	27N 07W 24 K	G N/P	11		023708	UNION OIL CO OF CALIFORNIA
5274	2575610	27N 07W 24 K	O N/P	11		023708	UNION OIL CO OF CALIFORNIA
5275	2557550	27N 07W 24 K	W N/P	11		023708	UNION OIL CO OF CALIFORNIA
5276	2557530	27N 07W 24 K	G N/P	11		023708	UNION OIL CO OF CALIFORNIA
5277	2566950	27N 07W 24 M	W N/P	13		023708	UNION OIL CO OF CALIFORNIA
5278	2566930	27N 07W 24 M	G N/P	13		023708	UNION OIL CO OF CALIFORNIA
5279	2567130	27N 07W 25 C	G N/P	1		023708	UNION OIL CO OF CALIFORNIA
5280	2567150	27N 07W 25 C	W N/P	1		023708	UNION OIL CO OF CALIFORNIA
5281	2557750	27N 07W 25 K	W N/P	5		023708	UNION OIL CO OF CALIFORNIA
5282	2567250	27N 07W 25 K	W N/P	5		023708	UNION OIL CO OF CALIFORNIA
5283	2567230	27N 07W 25 K	G N/P	5		023708	UNION OIL CO OF CALIFORNIA
5284	2557710	27N 07W 25 K	O N/P	5		023708	UNION OIL CO OF CALIFORNIA
5285	2557730	27N 07W 25 K	G N/P	5		023708	UNION OIL CO OF CALIFORNIA
5286	2579150	27N 07W 25 M	W N/P	7		023708	UNION OIL CO OF CALIFORNIA
5287	2579130	27N 07W 25 M	G N/P	7		023708	UNION OIL CO OF CALIFORNIA
5288	2575210	27N 07W 26 A	O N/P	1		023708	UNION OIL CO OF CALIFORNIA
5289	2575250	27N 07W 26 A	W N/P	1		023708	UNION OIL CO OF CALIFORNIA
5290	2575230	27N 07W 26 A	G N/P	1		023708	UNION OIL CO OF CALIFORNIA

# MERIDIAN OIL

September 15, 1994

Sent Federal Express

Mr. William LeMay  
New Mexico Oil Conservation Division  
Post Office Box 2088  
Santa Fe, New Mexico 87501

RECEIVED  
IN SEP 16 1994  
OIL CON. DIV.  
DIST. 3

Re Meridian Oil Inc. Huerfanito Unit #78M  
1545'FSL, 1270'FEL Section 36, T-27-N, R-9-W - San Juan County, New Mexico  
API # 30-045-28971

Dear Mr. LeMay:

Meridian Oil Inc. is applying for administrative approval of a non-standard location for the above location in both the Blanco Mesa Verde and Basin Dakota formations. This application for the referenced location is due to terrain as shown on the topographic map, the presence of pipelines and a dwelling to the east of the location.

This well was drilled as a Blanco Mesa Verde/Basin Dakota commingle. Order R-9887 was received from the Mexico Oil Conservation Division for commingling.

The following attachments are for your review:

1. Application for Permit to Drill.
2. Completed C-102 at referenced location.
3. Offset operators/owners plat and affidavit of notification.
4. 7.5 minute topographic map showing the orthodox windows for the east half dedication for the Mesa Verde and Dakota; and enlargement of the map to define topographic features.

A copy of this application is being submitted to all offset owners/ operators by certified mail with a request that they furnish you with a Waiver of Objection, and return one copy to this office.

Sincerely,



Peggy Bradfield  
Regulatory/Compliance Representative  
encs.

## WAIVER

\_\_\_\_\_ hereby waives objection to Meridian Oil's application for a non-standard location for their Huerfanito Unit #78M as proposed above.

By: \_\_\_\_\_ Date: \_\_\_\_\_

xc: Snyder Oil  
Merit Energy

RECEIVED  
SEP 16 1994

UNITED STATES  
DEPARTMENT OF THE INTERIOR  
BUREAU OF LAND MANAGEMENT

OIL CON. DIV.  
DIST. 3

APPLICATION FOR PERMIT TO DRILL, DEEPEN, OR PLUG BACK

1a. Type of Work DRILL	5. Lease Number <i>2651</i> NO-G-0955-1134
1b. Type of Well GAS	6. If Indian, All. or Tribe Navajo Tribe
2. Operator <b>MERIDIAN OIL</b>	7. Unit Agreement Name Huerfanito Unit
3. Address & Phone No. of Operator PO Box 4289, Farmington, NM 87499  (505) 326-9700	8. Farm or Lease Name Huerfanito Unit 9. Well Number 78M
4. Location of Well 1545'FSL, 1270'FEL  Latitude 36° 31' 42", Longitude 107° 44' 07"	10. Field, Pool, Wildcat Blanco Mesa Verde/ Basin Dakota 11. Sec., Twn, Rge, Mer. Sec 36, T-27-N, R-9-W NMPM
14. Distance in Miles from Nearest Town 11 miles from Huerfano Trading Post	12. County San Juan 13. State NM
15. Distance from Proposed Location to Nearest Property or Lease Line 1270'	
16. Acres in Lease <i>160 ac</i>	17. Acres Assigned to Well 320 E/2
18. Distance from Proposed Location to Nearest Well, Drig, Compl, or Applied for on this Lease 600'	
19. Proposed Depth 6693'	This action is subject to technical and procedural review pursuant to 43 CFR 3165.3 and appeal pursuant to 43 CFR 3165.4.
20. Rotary or Cable Tools Rotary	
21. Elevations (DF, FT, GR, Etc.) 6161'GR	22. Approx. Date Work will Start 2nd quarter 1993
23. Proposed Casing and Cementing Program See Operations Plan attached	
24. Authorized by: <i>[Signature]</i> Regional Drilling Engineer	Date <i>3/15/93</i>

PERMIT NO. \_\_\_\_\_ APPROVAL DATE \_\_\_\_\_  
APPROVED BY \_\_\_\_\_ TITLE \_\_\_\_\_

Archaeological Report to be submitted  
Threatened and Endangered Species Report to be submitted  
NOTE: This format is issued in lieu of U.S. BLM Form 3160-3

OPERATOR

DATE  
APPROVED  
AS AMENDED

DISTRICT MANAGER

Schedule to Assignment  
District Office  
Date Lease - 4 copies  
Fee (Lease - 3 copies)

State of New Mexico  
Energy, Minerals and Natural Resources Department

Form C-182  
Revised 1-1-89

OIL CONSERVATION DIVISION

P.O. Box 2088

Santa Fe, New Mexico 87504-2088

DISTRICT I  
P.O. Box 1980, Hobbs, NM 88240

DISTRICT II  
P.O. Drawer DD, Artesa, NM 88210

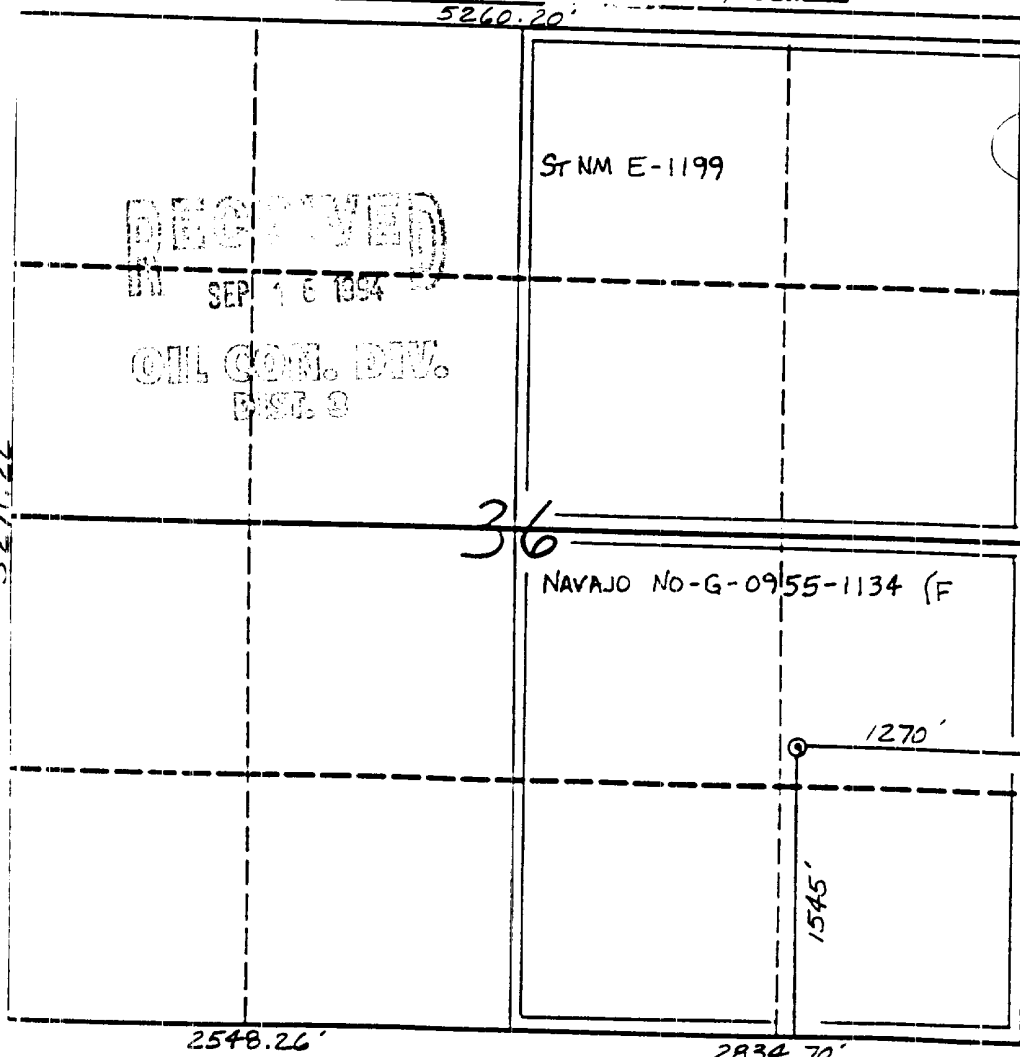
DISTRICT III  
100 Rio Brazos St., Aztec, NM 87410

WELL LOCATION AND ACREAGE DEDICATION PLAT

All Distances must be from the outer boundaries of the section

Operator		Lease		Well No.	
Meridian Oil Inc.		Huerfanito Unit		78M	
Unit Letter	Section	Township	Range	County	
I	36	27 North	9 West	San Juan	
Acres Footage Location of Well:					
1545	feet from the	South	line and	1270	feet from the
6161'	Casino level Elev.	Producing Formations	Pool	East	line
	Mesa Verde/Dakota		Blanco/Basin		Dedicated Acreage:
					320
					Acres

- Outline the acreage dedicated to the subject well by colored pencil or ink on the plat below.
- If more than one lease is dedicated to the well, outline each and identify the ownership thereof (both as to working interest and royalty).
- If more than one lease of different ownership is dedicated to the well, have the interest of all owners (less consolidated by communitization, unitization, force-pooling, etc.)  
☒ Yes ☐ No If answer is "yes" type of communitization unitization  
If answer is "no" list the owners and their descriptions which have actually been communitized. (Use reverse side of this form if necessary.)  
No acreage will be assigned to the well until all interests have been consolidated (by communitization, unitization, force-pooling, or otherwise) or until a non-standard unit, eliminating such interest, has been approved by the Division.



OPERATOR CERTIFICATION

I hereby certify that the information contained herein is true and complete to the best of my knowledge and belief.

Peggy Bradfield  
Signature

Peggy Bradfield

Printed Name

Regulatory Representative

Position

Meridian Oil Inc.

Company

3-12-93

Date

SURVEYOR CERTIFICATION

I hereby certify that the well location shown on this plat was plotted from field notes of actual surveys made by me or under my supervision, and that the same is true and correct to the best of my knowledge and belief.

12-22-92

Date Surveyed

NEAL C. EDWARDS

Signature of Surveyor

Professional Surveyor

3857

Surveyor's License No.

2873.64'

2603.70'

6857

March 15, 1993

OPERATIONS PLAN

Well Name: Huerfanito Unit #78M  
Location: 1545'FSL, 1270'FEL Section 36, T-27-N, R-9-W  
 San Juan County, New Mexico  
 Latitude 36° 31' 42", Longitude 107° 44' 07"  
Formation: Blanco Mesa Verde/Basin Dakota  
Elevation: 6161'GL

<u>Formation Tops:</u>	<u>Top</u>	<u>Bottom</u>	<u>Contents</u>
Surface	Nacimiento	1188'	
Ojo Alamo	1188'	1319'	aquifer
Kirtland	1319'	1813'	
Fruitland	1813'	2003'	gas
Pictured Cliffs	2003'	3271'	gas
Mesa Verde	3271'	3658'	salt water
Menefee	3658'	4368'	salt water
Point Lookout	4368'	4933'	gas & oil
Mancos	4933'	5455'	
Gallup	5455'	6273'	gas & oil
Greenhorn	6273'	6331'	
Graneros	6331'	6405'	gas & oil
Dakota	6405'		gas & oil
<b>Total Depth</b>	<b>6693'</b>		

Logging Program:

Mud Logs/Coring/DST -  
 Mud logs - yes  
 Coring - none  
 DST - none  
 Electric logs - DIL/FDC-CNL

Mud Program:

<u>Interval</u>	<u>Type</u>	<u>Weight</u>	<u>Vis.</u>	<u>Fluid Loss</u>
0- 200'	Spud	8.4-8.9	40-50	no control
200-6693'	LSND	8.4-9.1	30-60	no control

Pit levels will be visually monitored to detect gain or loss of fluid control.

Casing Program:

<u>Hole Size</u>	<u>Depth Interval</u>	<u>Csg. Size</u>	<u>Wt.</u>	<u>Grade</u>
12 1/4"	0' - 200'	8 5/8"	24.0#	K-55
7 7/8"	0' - 6693'	4 1/2"	10.5#	K-55

Tubing Program:

0' - 6693'      2 3/8"      4.7#      J-55 EUE

BOP Specifications, Wellhead and Tests:

## Surface to TD -

11" 3000 psi minimum double gate BOP stack (Reference Figure #1). After nipple-up prior to drilling out surface casing, rams and casing will be tested to 600 psi for 30 minutes.

2" nominal, 3000 psi minimum choke manifold (Reference Figure #3).

## Completion Operations -

6" 3000 psi double gate BOP stack (Reference Figure #2). After nipple-up prior to completion, pipe rams and casing top will be tested to 3000 psi for 15 minutes.

## Surface to Total Depth -

2" nominal, 3000 psi minimum choke manifold (Reference Figure #3).

## Wellhead -

8 5/8" x 4 1/2" x 2 3/8" x 3000 psi tree assembly.

## General -

- Pipe rams will be actuated once each day and blind rams will be actuated once each trip to test proper functioning.
- An upper kelly cock valve with handle available and drill string valves to fit each drill string will be available on the rig floors at all times.
- A BOP pit level drill will be conducted weekly for each drilling crew.
- All of the BOP tests and drills will be recorded in the daily drilling reports.
- Blind and pipe rams will be equipped with extension hand wheels.

Cementing:

## 8 5/8" surface casing -

Cement to surface w/140 sx Class "B" cement w/3% calcium chloride and 1/4#/sx cellophane flakes (165 cu.ft. of slurry, 100% excess to circulate to surface.) WOC 12 hours prior to drilling out surface casing. Test casing to 600 psi for 30 minutes.

Saw tooth guide shoe on bottom. Bowspring centralizers will be run in accordance with Onshore Order #2.

## Production Casing - 4 1/2"

First Stage: Cement to circulate to stage tool @ 4518'. Lead w/494 sx 65/35 Class "B" Pozmix w/6% gel, 2% calcium chloride, and 1/4#/sx cellophane flakes. Tail w/100 sx Class "B" cement w/2% calcium chloride. WOC 4 hours prior to pumping second stage. (Slurry volume: 992 cu.ft. Excess slurry 100%.)

Second Stage: Cement to circulate to stage tool @ 1469'. Lead w/719 sx 65/35 Class "B" Pozmix w/6% gel, 2% calcium chloride, and 1/4#/sx cellophane flakes. Tail w/100 sx Class "B" cement w/2% calcium chloride. WOC a minimum of 18 hours prior to cleanout. (Slurry volume: 1390 cu.ft. Excess slurry: 100%.)



Third Stage: Cement to circulate to surface. Cement w/312 sx 65/35 Class "B" Pozmix w/6% gel, 2% calcium chloride, and 1/4#/sx cellophane flakes. Tail w/100 sx Class "B" cement w/2% calcium chloride. WOC a minimum of 18 hours prior to cleanout. (Slurry volume: 670 cu.ft. Excess slurry: 100%.)

Float shoe on bottom. Three centralizers run every other joint above shoe. Thirty-two centralizers - one every 4th joint to the base of the Ojo Alamo @ 1319'. Two turbolizing type centralizers - one below and one into the base of the Ojo Alamo @ 1319'. Standard centralizers thereafter every fourth joint up to the base of the surface pipe.

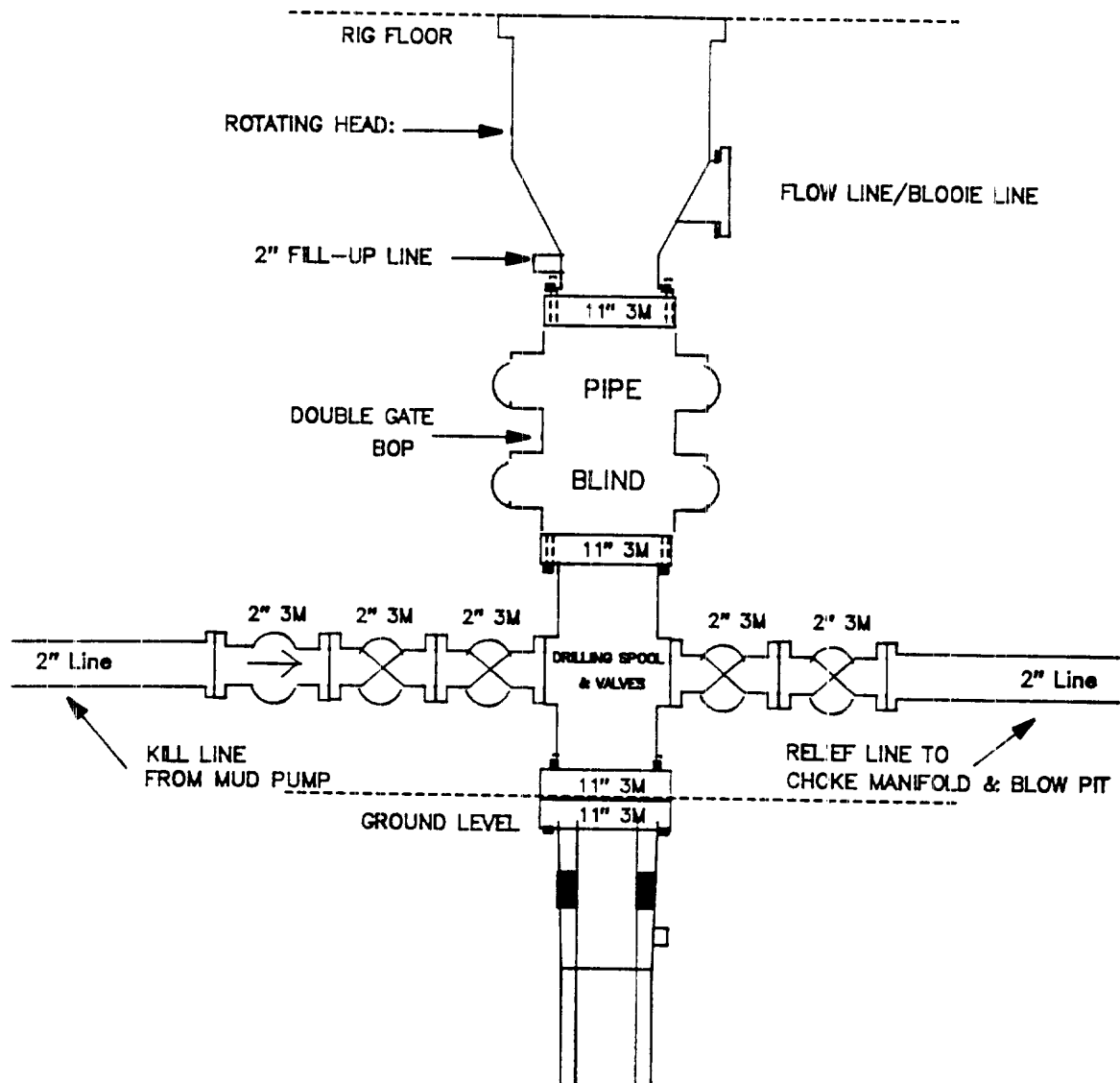
- If hole conditions permit, an adequate water spacer will be pumped ahead of each cement job to prevent cement/ mud contamination or cement hydration.
- The pipe will be rotated and/or reciprocated, if hole conditions permit.

Additional Information:

- Mesa Verde and Dakota formations will be completed and commingled per New Mexico Oil Conservation Division Order.
- No abnormal temperatures or hazards are anticipated.
- Sufficient LCM will be added to the mud system to maintain well control, if lost circulation is encountered below the top of the Pictured Cliffs.
- The East half of Section 36 is dedicated to both the Mesa Verde and Dakota formations.
- This gas is dedicated.
- New casing will be utilized.
- Pipe movement (either rotation or reciprocation) will be done if hole conditions permit.

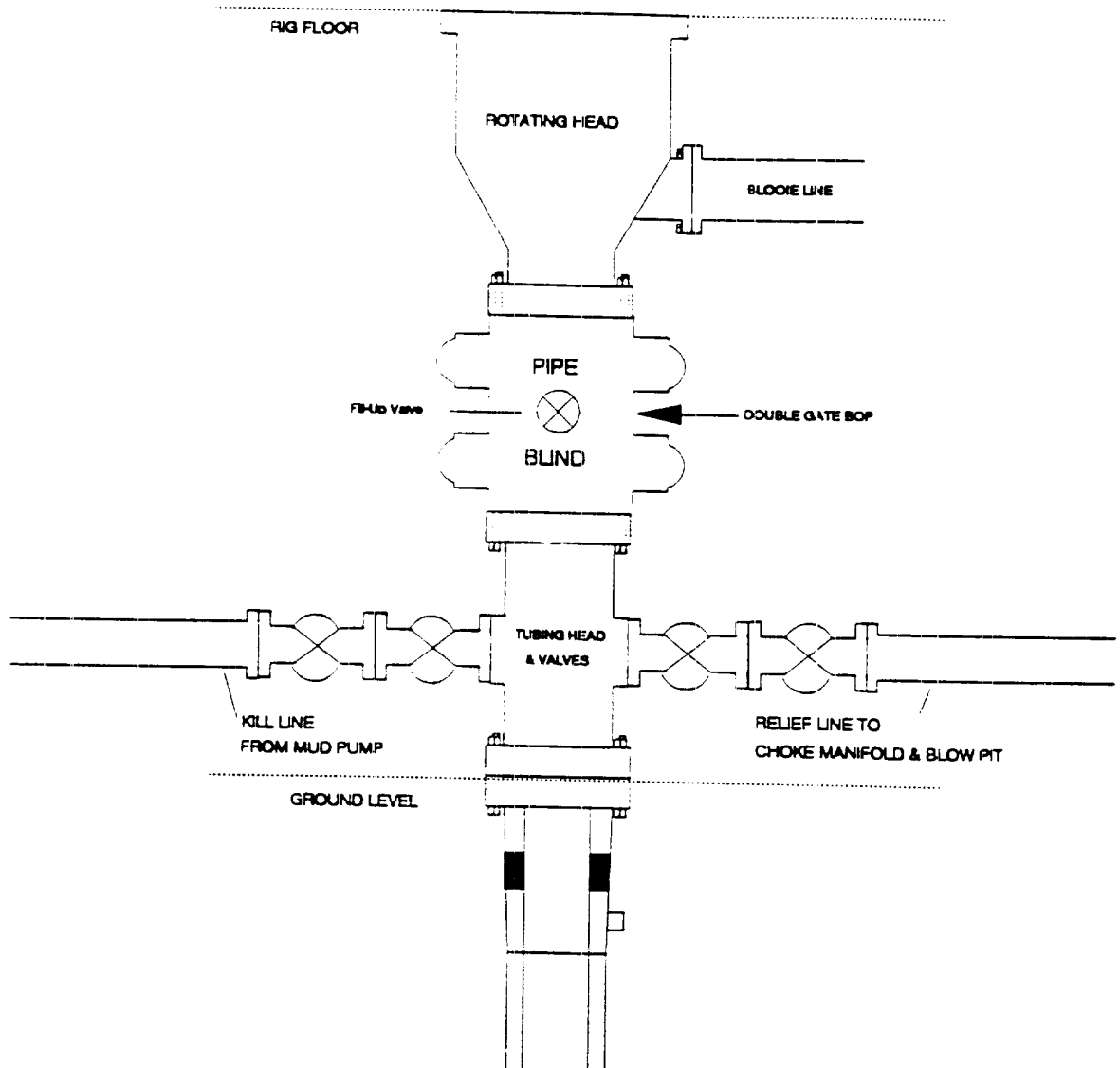
# MERIDIAN OIL INC.

## Drilling Rig 3000 psi System



11" Bore (10" Nominal), 3000psi working pressure minimum double gate BOP to be equipped with blind and pipe rams. A rotating head on the top of the rams. All BOP equipment is 3000psi working pressure.

**MERIDIAN OIL INC.**  
**Dakota Well - Completion Rig**  
**BOP Configuration**

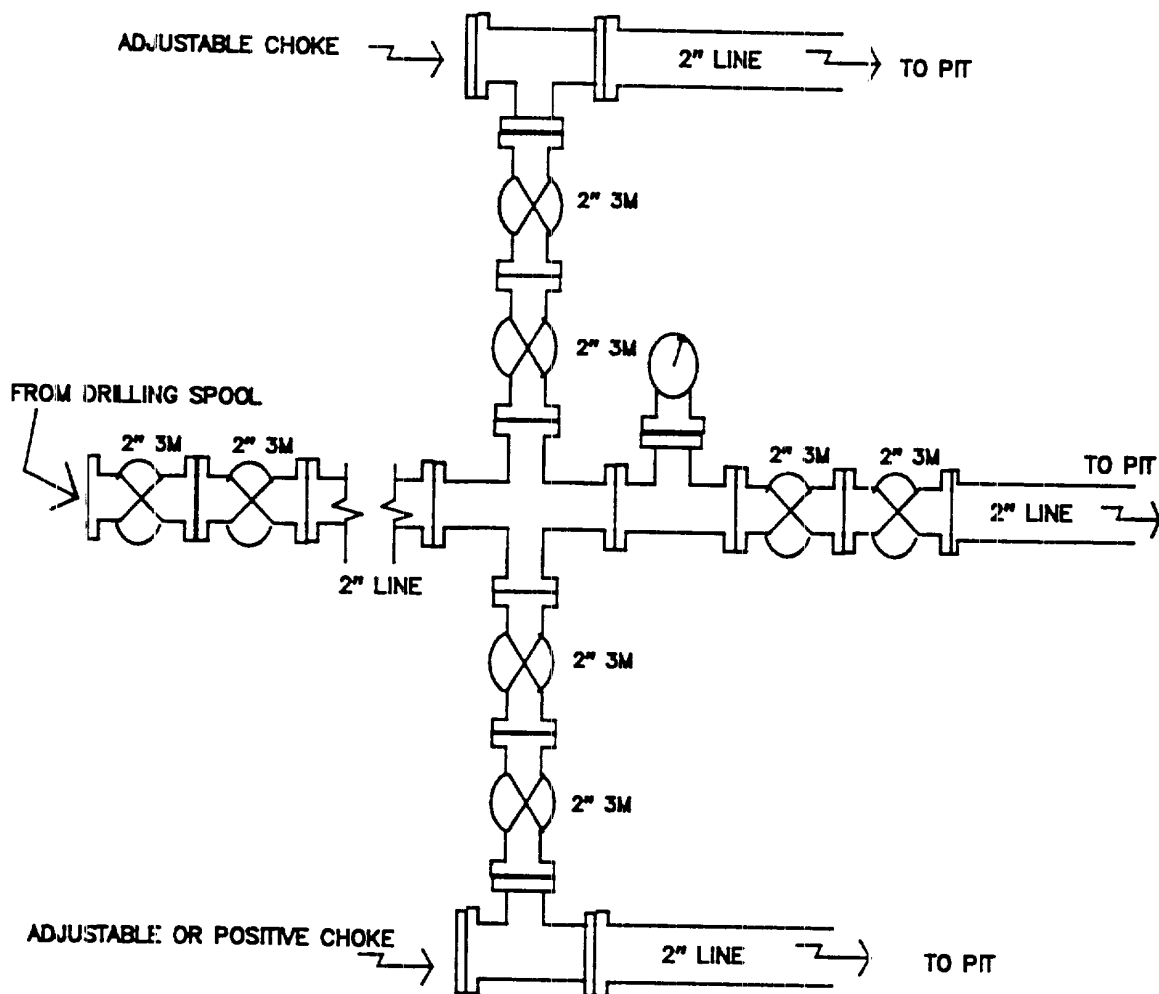


Minimum BOP installation for Completion Operations. 7 1/16" Bore  
(6" Nominal), 3000psi minimum working pressure double gate BOP to  
be equipped with blind and pipe rams.

**Figure #2**

# MERIDIAN OIL INC.

## Drilling Rig Choke Manifold Configuration 3000 psi System



3000psi working pressure equipment with two chokes.

# **MERIDIAN OIL**

## **Huerfanito Unit #78M Multi-Point Surface Use Plan**

1. **Existing Roads - Refer to Map No. 1. Existing roads used to access the proposed location will be properly maintained for the duration of the project. Bureau of Land Management right-of-way has been applied for as shown on Map No. 1.**
2. **Planned Access Road - Refer to Map No. 1. The required new access road is shown on Map No. 1. The gradient, shoulder, crowning and other design elements will meet or exceed those specified by the responsible government agency. The new access road surface will not exceed twenty feet (20') in width. No additional turnarounds or turnouts will be required. Upon completion of the project, the access road will be adequately drained to control soil erosion. Approximately 550' of access road will be constructed. Pipelines are indicated on Map No. 1A.**
3. **Location of Existing Wells - Refer to Map No. 1A.**
4. **Location of Existing and/or Proposed Facilities if Well is Productive -**
  - a. **On the Well Pad - Refer to Plat No. 1, anticipated production facilities plat.**
  - b. **Off the Well Pad - Anticipated facilities off the well pad will be applied for as required.**
5. **Location and Type of Water Supply - Water will be hauled by truck for the proposed project and will be obtained from Kah-Des-Pah Water Hole located in SW/4 Section 18, T-26-N, R-8-W, New Mexico.**
6. **Source of Construction Materials - If construction materials are required for the proposed project, such materials will be obtained from a commercial quarry.**
7. **Methods of Handling Waste Materials - All garbage and trash materials will be removed from the site for proper disposal. A portable toilet will be provided for human waste and serviced in a proper manner. If liquids are left in the reserve pit after completion of the project, the pit will be fenced until the liquids have had adequate time to dry. The location clean-up will not take place until such time as the reserve pit can be properly covered over to prevent run-off from carrying waste materials into the watershed. All reserve pits will be lined with 12 mil bio-degradable plastic liner. All earthen pits will be so constructed as to prevent leakage from occurring; no earthen pit will be located on natural drainage. Generation of hazardous waste is not anticipated. Federal regulations will be adhered to regarding handling and disposal of such waste if so generated.**
8. **Ancillary Facilities - None anticipated.**
9. **Wellsite Layout - Refer to the location diagram and to the wellsite cut and fill diagram (Figure No. 4). The blow pit will be constructed with a 2'/160' grade to allow positive drainage to the reserve pit and prevent standing liquids in the blow pit.**

10. Plans for Restoration of the Surface - After completion of the proposed project, the location will be cleaned and leveled. The location will be left in such a condition that will enable reseeding operations to be carried out. Seed mixture as designated by the responsible government agency will be used. The reseeding operations will be performed during the time period set forth by the responsible government agency. The permanent location facilities will be painted as designated by the responsible government agency.
11. Surface Ownership - State of New Mexico.
12. Other Information - Environmental stipulations as outlined by the responsible government agency will be adhered to. Refer to the archaeological report for a description of the topography, flora, fauna, soil characteristics, dwellings, historical and cultural sites.
13. Operator's Representative and Certification - Meridian Oil Regional Drilling Manager, Post Office Box 4289, Farmington, NM 87499, telephone (505) 326-9700. I hereby certify that I, or persons under my direct supervision, have inspected the proposed drill site and access route; that I am familiar with the conditions which presently exist; that the statements made in this plan, are to the best of my knowledge, true and correct; and that the work associated with the operations proposed herein will be performed by Meridian Oil Inc. and its contractors and subcontractors in conformity with this plan and the terms and conditions under which it is approved.

  
\_\_\_\_\_  
Regional Drilling Engineer

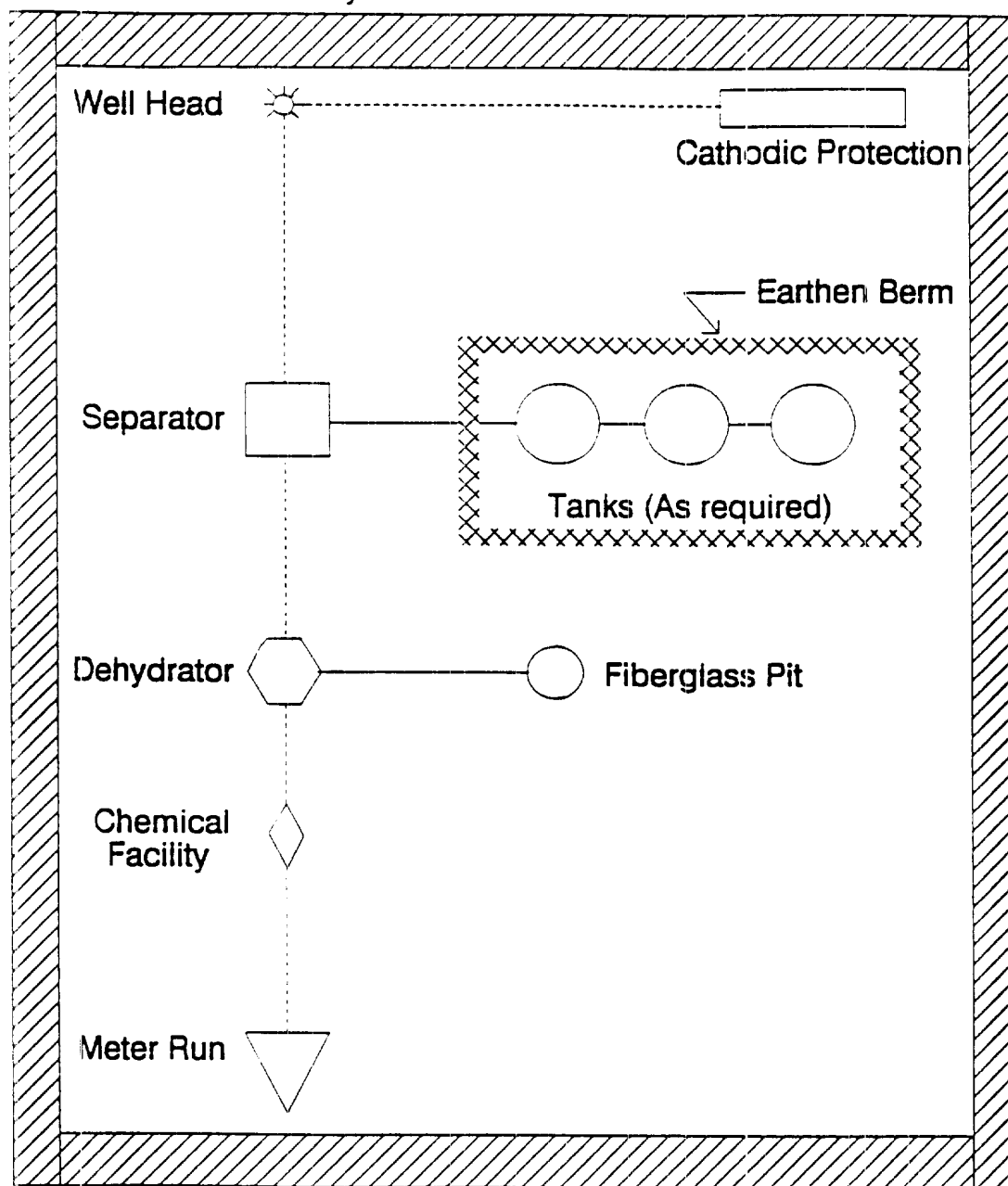
3/15/93  
\_\_\_\_\_  
Date







Well Pad Boundary



PLAT #1

# MERIDIAN OIL

ANTICIPATED  
PRODUCTION FACILITIES  
FOR A  
DAKOTA WELL

SPF 8/81

# MERIDIAN OIL

## Plat 5

Name: MOI HUERFANITO UNIT #78M  
 Footage: 1545 FSL 1270 FEL  
 Sec 36 T- 27 N.R- 9 W NMPM  
 Co. SAN JUAN St. N.M.  
 Elevation: 6161' Date: 12-22-92

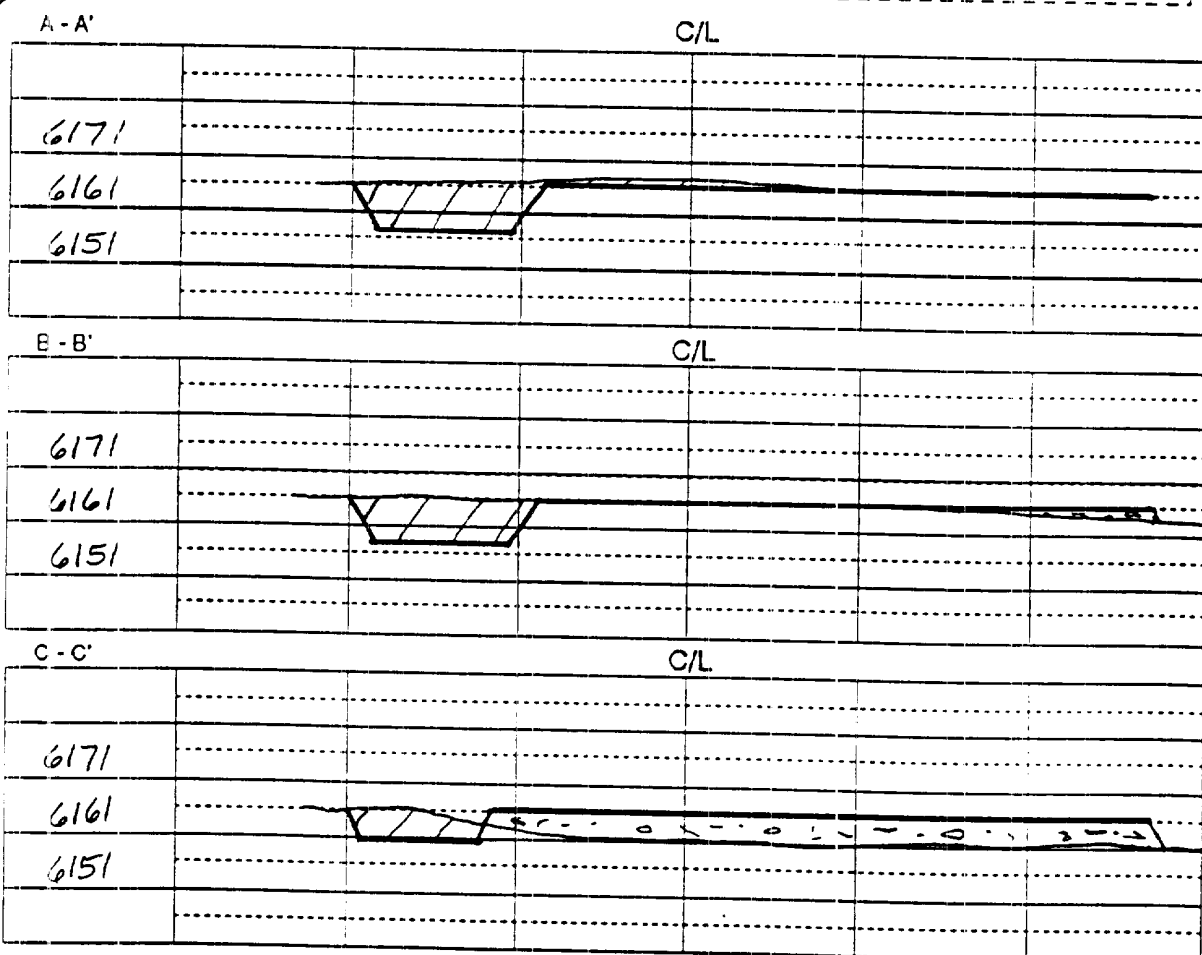
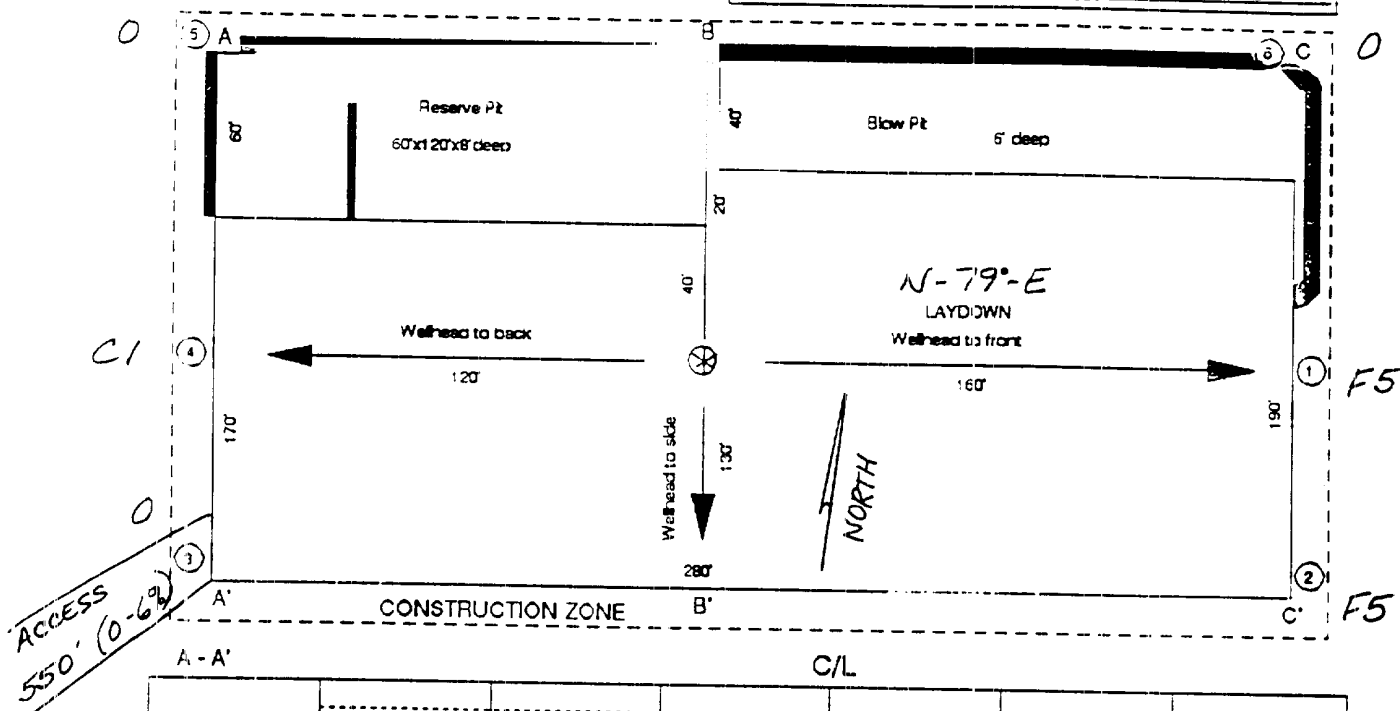


Figure #4

Submit to Applicant:  
District Office  
State Lease - 4 copies  
Fee Lease - 3 copies

State of New Mexico  
Energy, Minerals and Natural Resources Department

Form C-102  
Revised 1-1-89

OIL CONSERVATION DIVISION

P.O. Box 2088  
Santa Fe, New Mexico 87504-2088

DISTRICT I  
P.O. Box 1980, Hobbs, NM 88240

DISTRICT II  
P.O. Drawer 00, Arama, NM 88210

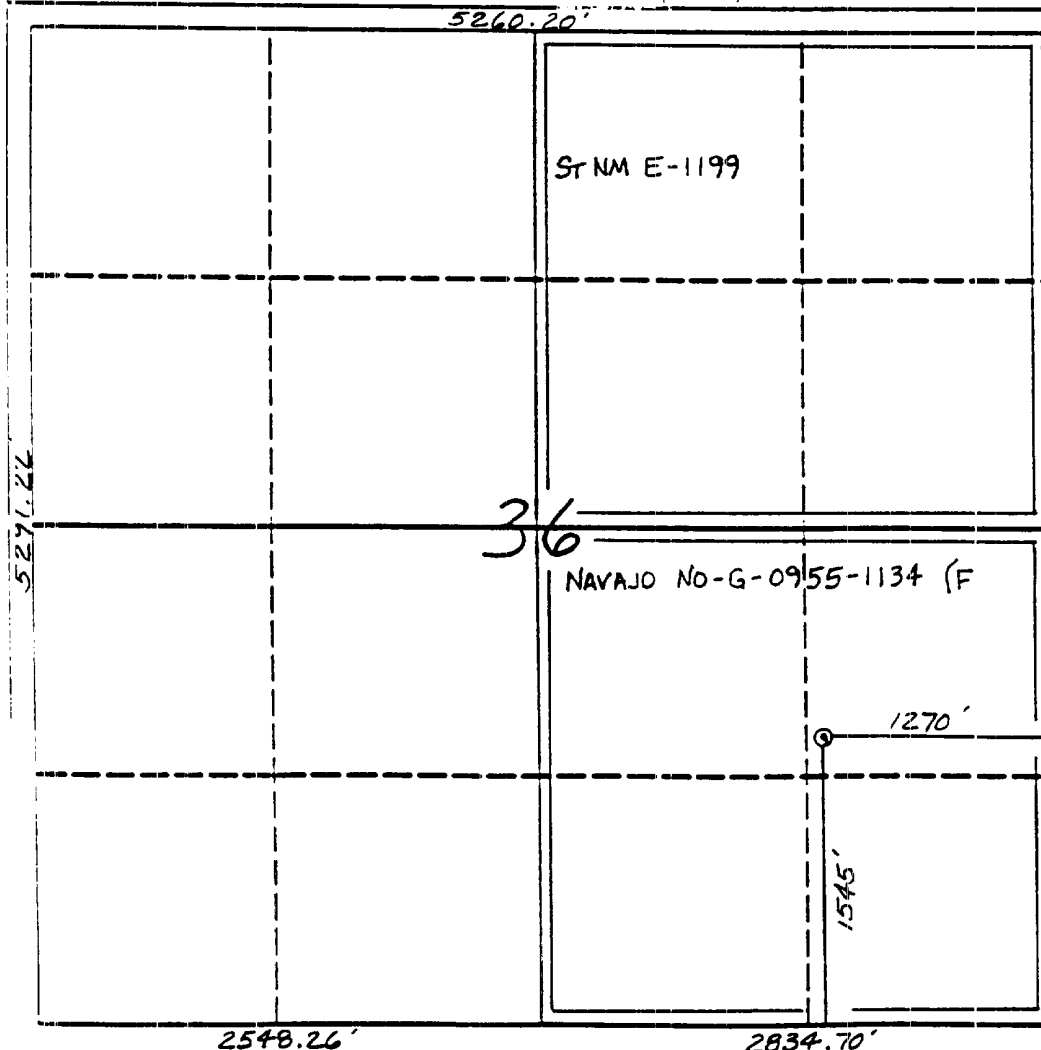
DISTRICT III  
1000 Rio Blanco Rd., Aztec, NM 87410

WELL LOCATION AND ACREAGE DEDICATION PLAT

All Distances must be from the outer boundaries of the section

Operator Meridian Oil Inc.		Lease Huerfanito Unit		Well No. 78M	
Just. Letter I	Section 36	Township 27 North	Range 9 West	County San Juan	
Actual Footage Location of Well: 1545 feet from the South line and 1270 feet from the East line					
Ground Level Elev. 6161'	Producing Formation Mesa Verde/Dakota	Pool Blanco/Basin	Dedicated Acreage 320 Acres		

- Outline the acreage dedicated to the subject well by colored pencil or inkline marks on the plat below.
- If more than one lease is dedicated to the well, outline each and identify the ownership thereof (both as to working interest and royalty).
- If more than one lease of different ownership is dedicated to the well, have the names of all owners been consolidated by commutation, unitization, force-pooling, etc.?  
☒ Yes ☐ No If answer is "yes" type of consolidation unitization  
If answer is "no" list the owners and tract descriptions which have actually been consolidated. (Use reverse side of this form if necessary.)  
No allowable will be assigned to the well until all interests have been consolidated (by commutation, unitization, force-pooling, or otherwise) or until a non-standard unit, eliminating such interest, has been approved by the Division.



OPERATOR CERTIFICATION

I hereby certify that the information contained herein is true and complete to the best of my knowledge and belief.

Signature  
Peggy Bradfield  
Printed Name  
Regulatory Representative  
Position  
Meridian Oil Inc.  
Company  
Date

SURVEYOR CERTIFICATION

I hereby certify that the well location shown on this plat was plotted from field notes actual surveys made by me or under supervision, and that the same is true, correct to the best of my knowledge and belief. 12-22-92

Date Surveyed  
C. EDWARDS  
Needle  
Signature  
Professional Surveyor  
9857  
6857

Re: Meridian Oil Inc. Huerfanito Unit #78M  
1545'FSL, 1270'FEL Section 36, T-27-N, R-9-W - San Juan County, New Mexico  
API # 30-045-28971

I hereby certify that the following offset operators/owners have been mailed notification of our application for non-standard location to drill the referenced well.

**Mesa Verde**

Snyder Oil  
1801 California Street  
Suite 3500  
Denver, Colorado 80202

**Dakota**

Merit Energy  
12222 Merit Drive, Suite 1500  
Dallas, TX 75251

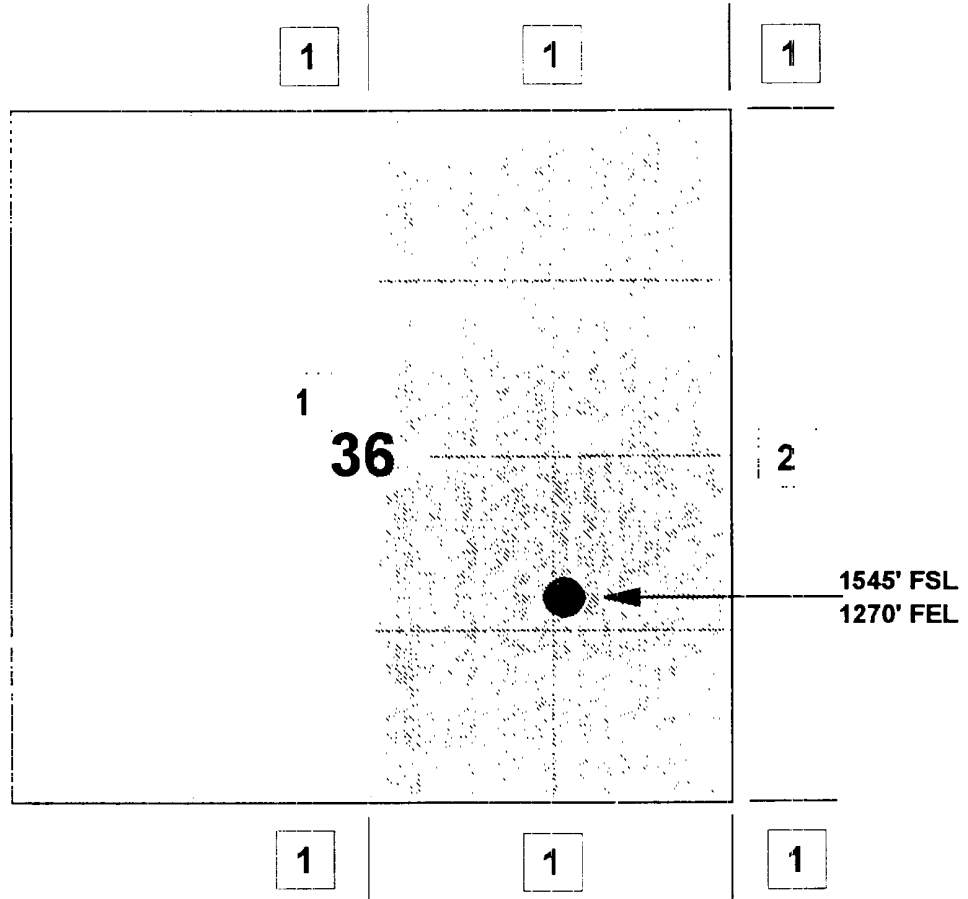
A handwritten signature in black ink, appearing to read "Peggy A. Bradfield". The signature is fluid and cursive, with a large initial "P" and "B".

Peggy A. Bradfield  
San Juan County, State of New Mexico  
My commission expires August 17, 1996

**MERIDIAN OIL INC**  
**HUERFANITO UNIT #78M**  
**OFFSET OPERATOR \ OWNER PLAT**

Unorthodox Mesaverde Well Location

Township 27 North, Range 9 West



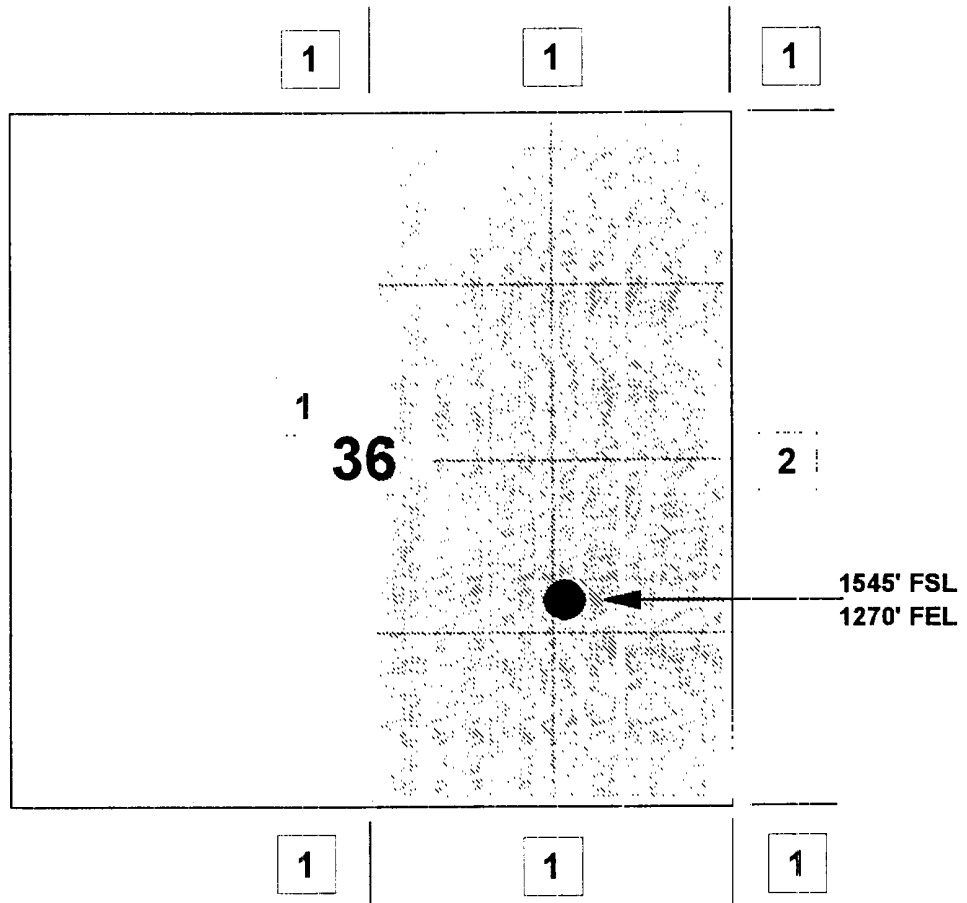
1) Meridian Oil Inc

2) Snyder Oil Company

1801 California St., Suite 3500, Denver, CO 80202

**MERIDIAN OIL INC**  
**HUERFANITO UNIT #78M**  
**OFFSET OPERATOR \ OWNER PLAT**

Unorthodox Dakota Well Location  
Township 27 North, Range 9 West



1) Meridian Oil Inc

2) Merit Energy Company

12222 Merit Drive, Suite 1500, Dallas, TX 75251

