

UNITED STATES
DEPARTMENT OF THE INTERIOR
BUREAU OF LAND MANAGEMENT

Form approved.
Budget Bureau No. 1004-0136
Expires: December 31, 1991

APPLICATION FOR PERMIT TO DRILL OR DEEPEN

1a. TYPE OF WORK

DRILL ☒

DEEPEN ☐

b. TYPE OF WELL

OIL WELL ☐

GAS WELL ☒

OTHER

SINGLE ZONE ☒

MULTIPLE ZONE ☐

2. NAME OF OPERATOR

AMOCO PRODUCTION COMPANY

778

Attention:

Julie L. Acevedo

3. ADDRESS AND TELEPHONE NO.

P.O. Box 800, Denver, Colorado 80201

(303) 830-6003

4. LOCATION OF WELL (Report location clearly and in accordance with any State requirements. *)

At surface

1570FNL

1510FWL

At proposed prod. zone

14. DISTANCE IN MILES AND DIRECTION FROM NEAREST TOWN OR POST OFFICE*

11 Miles from Bloomfield, N.M.

15. DISTANCE FROM PROPOSED* LOCATION TO NEAREST PROPERTY OR LEASE LINE, FT.
(Also to nearest drig. unit line, if any)

18. DISTANCE FROM PROPOSED LOCATION* TO NEAREST WELL, DRILLING COMPLETED, OR APPLIED FOR, ON THIS LEASE, FT.

21. ELEVATIONS (Show whether DF, RT, GR., etc.)

5994' GR

16. NO. OF ACRES IN LEASE

161.53

19. PROPOSED DEPTH

2093' TD

17. NO. OF ACRES ASSIGNED TO THIS WELL

161.53

20. ROTARY OR CABLE TOOLS

Rotary

22. APPROX. DATE WORK WILL START*

05-01-95

5. LEASE DESIGNATION AND SERIAL NO.

048567
NM-48567

6. IF INDIAN, ALLOTTEE OR TRIBE NAME

7. UNIT AGREEMENT NAME

8. FARM OR LEASE NAME, WELL NO.

16965 Bolack F #1

9. API WELL NO.

30-045-2923.3
77200 Fulcher Kutz Pictured Cliffs
EXT

11. SEC., T., R., M., OR BLK. AND SURVEY OR AREA

Section 2
Township 27N Range 11W

12. COUNTY OR PARISH

SAN JUAN

13. STATE

NEW MEXICO

PROPOSED CASING AND CEMENTING PROGRAM

SIZE OF HOLE	GRADE, SIZE OF CASING	WEIGHT PER FOOT	SETTING DEPTH	QUANTITY OF CEMENT
8.75"	7"	23#	250'	100sx CI B to Surface
6.25" technical and procedural review pursuant to 43 CFR 3165.3 and appeal pursuant to 43 CFR 3165.4	9.2"		2093'	227sx CI B to Surface

Notice of staking submitted as the Bolack F #1 on 12/6/94.

Lease Discription: T27N-R11W

Sec 2: Lots 3, 4, S/2 NW/4

DRILLING OPERATIONS TO BE PERFORMED ARE
SUBJECT TO THE GENERAL AND SPECIAL ATTACHED
"GENERAL REGULATIONS FOR DRILLING"

RECEIVED
APR 17 1995
OIL & GAS DIV.
BUREAU

IN ABOVE SPACE DESCRIBE PROPOSED PROGRAM: If proposal is to deepen, give data on present productive zone and proposed new productive zone. If proposal is to drill or deepen directionally, give pertinent data on subsurface locations and measured and true vertical depths. Give blowout-preventer program, if any.

24. SIGNED Julie L. Acevedo TITLE Sr. Staff Assistant DATE 03-24-1995

(This space for Federal or State office use)

PERMIT NO.

APPROVAL DATE

APPROVED
AS AMENDED

Application approval does not warrant or certify that the applicant holds legal or equitable title to those rights in the subject lease which would entitle the applicant to conduct operations thereon.

CONDITIONS OF APPROVAL, IF ANY:

APPROVED BY

TITLE

NMOC

*See Instructions On Reverse Side

Title 18 U.S.C. Section 1001, makes it a crime for any person knowingly and willfully to make to any department or agency of the United States any false, fictitious or fraudulent statements or representations as to any matter within its jurisdiction.

District I
PO Box 1980, Hobbs, NM 88241-1980
District II
PO Drawer DD, Artesia, NM 88211-0719
District III
1000 Rio Brazos Rd., Aztec, NM 87410
District IV
PO Box 2088, Santa Fe, NM 87504-2088

State of New Mexico
Energy, Minerals & Natural Resources Department

OIL CONSERVATION DIVISION
PO Box 2088
Santa Fe, NM 87504-2088

Form C-102
Revised February 21, 1994
Instructions on back
Submit to Appropriate District Office
State Lease - 4 Copies
Fee Lease - 3 Copies

☐ AMENDED REPORT

WELL LOCATION AND ACREAGE DEDICATION PLAT

1 API Number 30-045-29233		1 Pool Code 77200		1 Pool Name Fulcher Kutz Pictured Cliffs EXT	
1 Property Code 16965		1 Property Name Bolack F			1 Well Number #1
1 OGRID No. 00778		1 Operator Name AMOCO PRODUCTION COMPANY			1 Elevation 5994

10 Surface Location

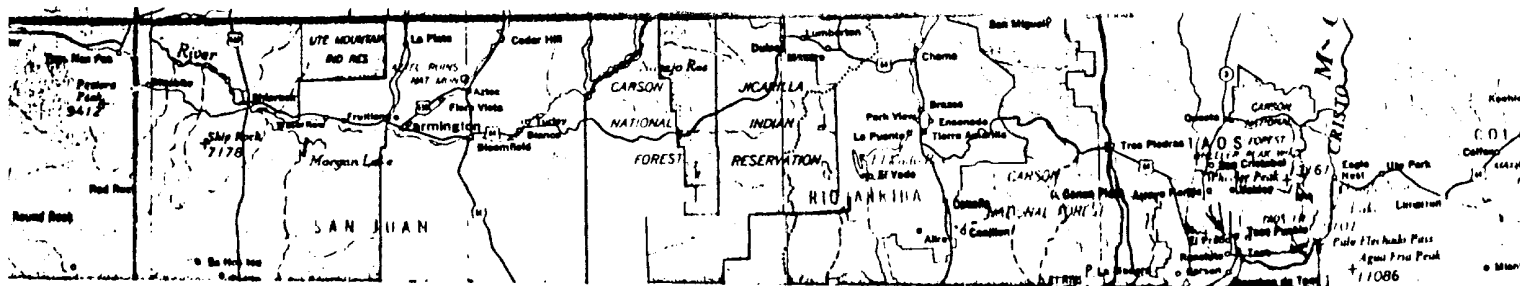
UL or lot no.	Section	Township	Range	Lot Idn	Feet from the	North/South line	Feet from the	East/West line	County
F	2	27 N	11 W		1570	NORTH	1510	WEST	SAN JUAN

11 Bottom Hole Location If Different From Surface

UL or lot no.	Section	Township	Range	Lot Idn	Feet from the	North/South line	Feet from the	East/West line	County
12 Dedicated Acres 161.53		13 Joint or Infill		14 Consolidation Code		15 Order No.			

NO ALLOWABLE WILL BE ASSIGNED TO THIS COMPLETION UNTIL ALL INTERESTS HAVE BEEN CONSOLIDATED
OR A NON-STANDARD UNIT HAS BEEN APPROVED BY THE DIVISION

<div>16</div> <div>RECEIVED APR 17 1995 OIL & GAS DIVISION</div>				<div>17 OPERATOR CERTIFICATION</div> <p>I hereby certify that the information contained herein is true and complete to the best of my knowledge and belief.</p> <p><i>Julie L. Acevedo</i> Signature Julie L. Acevedo Printed Name Sr. Staff Assistant Title 12/6/94 Date</p>	
				<div>18 SURVEYOR CERTIFICATION</div> <p>I hereby certify that the well location shown on this plat was plotted from field notes of actual surveys made by me or under my supervision, and that the same is true and correct to the best of my belief.</p> <p>October 12, 1994 Date of Survey <i>GARY D. VANDERKAM</i> Signature and Seal of Professional Surveyor: 7016 Certificate Number</p>	



NW 2 - 27 - 11 PC

1570' F/NL

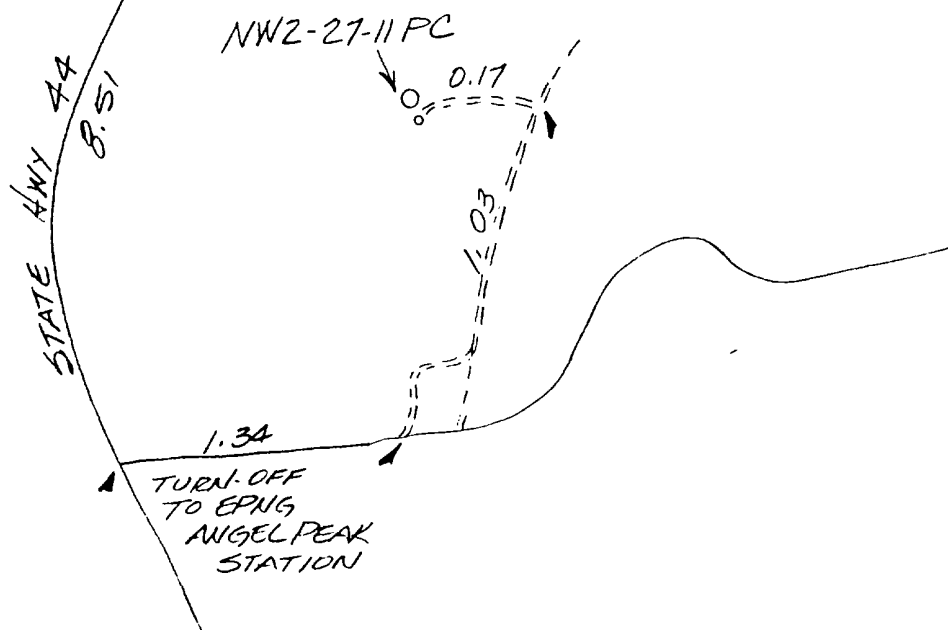
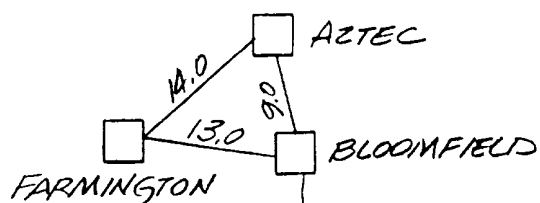
1510' F/WL

SECTION 2, T 27 N, R 11 W, N.M.P.M.

RAIL POINT:

MUD POINT:

CEMENT POINT:



R11W

236



AMOCO PRODUCTION COMPANY
NW 2 - 27 - 11 PC
1570' F/NL
SECTION 2, T 27 N, R 11 W, N.M.P.M.
SAN JUAN COUNTY, NEW MEXICO