

UNITED STATES  
DEPARTMENT OF THE INTERIOR

BUREAU OF LAND MANAGEMENT

RECEIVED

Form approved.  
Budget Bureau No. 1004-0136  
Expires: December 31, 1991

APPLICATION FOR PERMIT TO DRILL OR DEEPEN

1a. TYPE OF WORK

DRILL ☒

DEEPEN ☐

b. TYPE OF WELL

OIL WELL ☐

GAS WELL ☒

OTHER

SINGLE ZONE ☐

MULTIPLE ZONE ☒

2. NAME OF OPERATOR

Attention:

Amoco Production Company

Julia L. Acevedo

3. ADDRESS AND TELEPHONE NO.

P.O. Box 800, Denver, Colorado 80201

(303) 830-6003

4. LOCATION OF WELL (Report location clearly and in accordance with any State requirements. \*)

At surface

1590FSL

1090FEL

At proposed prod. zone

14. DISTANCE IN MILES AND DIRECTION FROM NEAREST TOWN OR POST OFFICE\*

31 miles from Aztec, N.M.

15. DISTANCE FROM PROPOSED\* LOCATION TO NEAREST PROPERTY OR LEASE LINE, FT. (Also to nearest drlg. unit line, if any)

16. NO. OF ACRES IN LEASE

935.36

17. NO. OF ACRES ASSIGNED TO THIS WELL

S/295.36

18. DISTANCE FROM PROPOSED LOCATION\* TO NEAREST WELL, DRILLING, COMPLETED, OR APPLIED FOR, ON THIS LEASE, FT.

19. PROPOSED DEPTH

6673' TD

20. ROTARY OR CABLE TOOLS

Rotary

21. ELEVATIONS (Show whether DF, RT, GR., etc.)

5841' GL

This action is subject to technical and procedural review and appeal pursuant to 43 CFR 3155.3 and 3155.4.

22. APPROX. DATE WORK WILL START\*

06-01-95

23.

PROPOSED CASING AND CEMENTING PROGRAM

SIZE OF HOLE	GRADE, SIZE OF CASING	WEIGHT PER FOOT	SETTING DEPTH	QUANTITY OF CEMENT
12.25"	9.625"	36# 5-59	50'	30cu.ft. CI B Cement Circ. to surface
9.75"	7"	20# 5-59	2403'	577cu.ft CI B Circ. to surface
6.25"	3.5"	9.2# 5-59	6673'	785cu.ft. CI B

Amoco Production Company submitted the NOS on 3/9/95 as the Bolack E #1E. DRILLING OPERATIONS AUTHORIZED ARE SUBJECT TO THE TERMS AND CONDITIONS WITH ATTACHED "GENERAL PERMIT CONDITIONS"

Lease Description: T28N-R8W:

Sec. 33: Lots 1,2,3,4, N/2S/2, N2

RECEIVED  
MAY 17 1995  
OIL CON. DIV.  
DIST. 3

IN ABOVE SPACE DESCRIBE PROPOSED PROGRAM: If proposal is to deepen, give data on present productive zone and proposed new productive zone. If proposal is to drill or deepen directionally, give pertinent data on subsurface locations and measured and true vertical depths. Give blowout preventer program, if any.

24.

SIGNED

Julia L. Acevedo

TITLE Sr. Staff Assistant

DATE

04-20-1995

(This space for Federal or State office use)

PERMIT NO.

APPROVAL DATE

Application approval does not warrant or certify that the applicant holds legal or equitable title to those rights in the subject lease which would entitle the applicant to conduct operations thereon.

CONDITIONS OF APPROVAL, IF ANY:

APPROVED BY

TITLE

NMDCO

\*See Instructions On Reverse Side

Title 18 U.S.C. Section 1001, makes it a crime for any person knowingly and willfully to make to any department or agency of the United States any false, fictitious or fraudulent statements or representations as to any matter within its jurisdiction.

APPROVED  
AS AMENDED

MAY 15 1995

DISTRICT MANAGER

District I  
PO Box 1980, Hobbs, NM 88241-1980

District II  
PO Drawer DD, Artesia, NM 88211-0719

District III  
1000 Rio Brazos Rd., Aztec, NM 87410

District IV  
PO Box 2088, Santa Fe, NM 87504-2088

**State of New Mexico**  
**Energy, Minerals & Natural Resources Department**

Form C-102  
Revised February 21, 1994  
Instructions on back  
o Appropriate District Office  
State Lease - 4 Copies  
Fee Lease - 3 Copies

OIL CONSERVATION DIVISION  
PO Box 2088  
Santa Fe, NM 87504-2088

**Submit to Appropriate District Office**  
**State Lease - 4 Copies**  
**Fee Lease - 3 Copies**

95 APR 26 AM 10:10

☐ AMENDED REPORT

# WELL LOCATION AND ACREAGE DEDICATION PLAT

' API Number 30-045-19251	' Pool Code 72319	' Pool Name Blanco Mesaverde
' Property Code 329	' Property Name BOLACK E	' Well Number # 1 EM
' OGRID No. 000778	' Operator Name AMOCO PRODUCTION COMPANY	' Elevation 5841

### <sup>10</sup> Surface Location

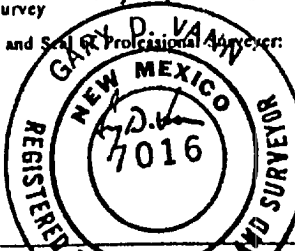
UL or lot no.	Section	Township	Range	Lot Ida	Feet from the	North/South line	Feet from the	East/West line	County
1	33	28 N	8 W		1590	SOUTH	1090	EAST	SAN JUAN

## " Bottom Hole Location If Different From Surface

UL or lot no.	Section	Township	Range	Lot Ida	Feet from the	North/South line	Feet from the	East/West line	County
---------------	---------	----------	-------	---------	---------------	------------------	---------------	----------------	--------

" Dedicated Acres	" Joint or Infill	" Consolidation Code	" Order No.
295.36			

**NO ALLOWABLE WILL BE ASSIGNED TO THIS COMPLETION UNTIL ALL INTERESTS HAVE BEEN CONSOLIDATED  
OR A NON-STANDARD UNIT HAS BEEN APPROVED BY THE DIVISION**

16				<b>17 OPERATOR CERTIFICATION</b> I hereby certify that the information contained herein is true and complete to the best of my knowledge and belief.
		<div data-bbox="576 1193 914 1443"><p>RECEIVED</p><p>MAY 17 1995</p><p>OIL CON. DIV.</p><p>DATE 3</p></div> <p>33</p>	<p>26.40'</p>	<p><i>Julie L. Acevedo</i></p> <p>Signature</p> <p>Julie L. Acevedo</p> <p>Printed Name</p> <p>Sr. Staff Assistant</p> <p>Title</p> <p>3/9/95</p> <p>Date</p>
			<p>1090'</p> <p>1590'</p> <p>1320'</p> <p>1320'</p>	<b>18 SURVEYOR CERTIFICATION</b> I hereby certify that the well location shown on this plat was plotted from field notes of actual surveys made by me or under my supervision, and that the same is true and correct to the best of my belief.  February 9, 1995 Date of Survey Signature and Seal of Professional Surveyor:  7016 Certificate Number

GLO RECORD

District I  
PO Box 1900, Hobbs, NM 88241-1900  
District II  
PO Drawer DD, Artesia, NM 88211-0719  
District III  
1000 Rio Brazos Rd., Aztec, NM 87410  
District IV  
PO Box 2088, Santa Fe, NM 87504-2088

**State of New Mexico**  
**Energy, Minerals & Natural Resources Department**

OIL CONSERVATION DIVISION  
PO Box 2088  
Santa Fe, NM 87504-2088

Form C-102  
Revised February 21, 1994  
Instructions on back  
Appropriate District Office  
State Lease - 4 Copies  
Fed Lease - 3 Copies

☐ AMENDED REPORT

# WELL LOCATION AND ACREAGE DEDICATION PLAT

' API Number 30-045-29251	' Pool Code 71599	' Pool Name Basin Dakota
' Property Code	' Property Name BOLACK E	' Well Number # 1 <i>PA</i>
' OGRID No. 00778	' Operator Name AMOCO PRODUCTION COMPANY	' Elevation 5841

### **<sup>10</sup> Surface Location**

UL or lot no.	Section	Township	Range	Lot Ida	Feet from the	North/South line	Feet from the	East/West line	County
1	33	28 N	8 W		1590	SOUTH	1090	EAST	SAN JUAN

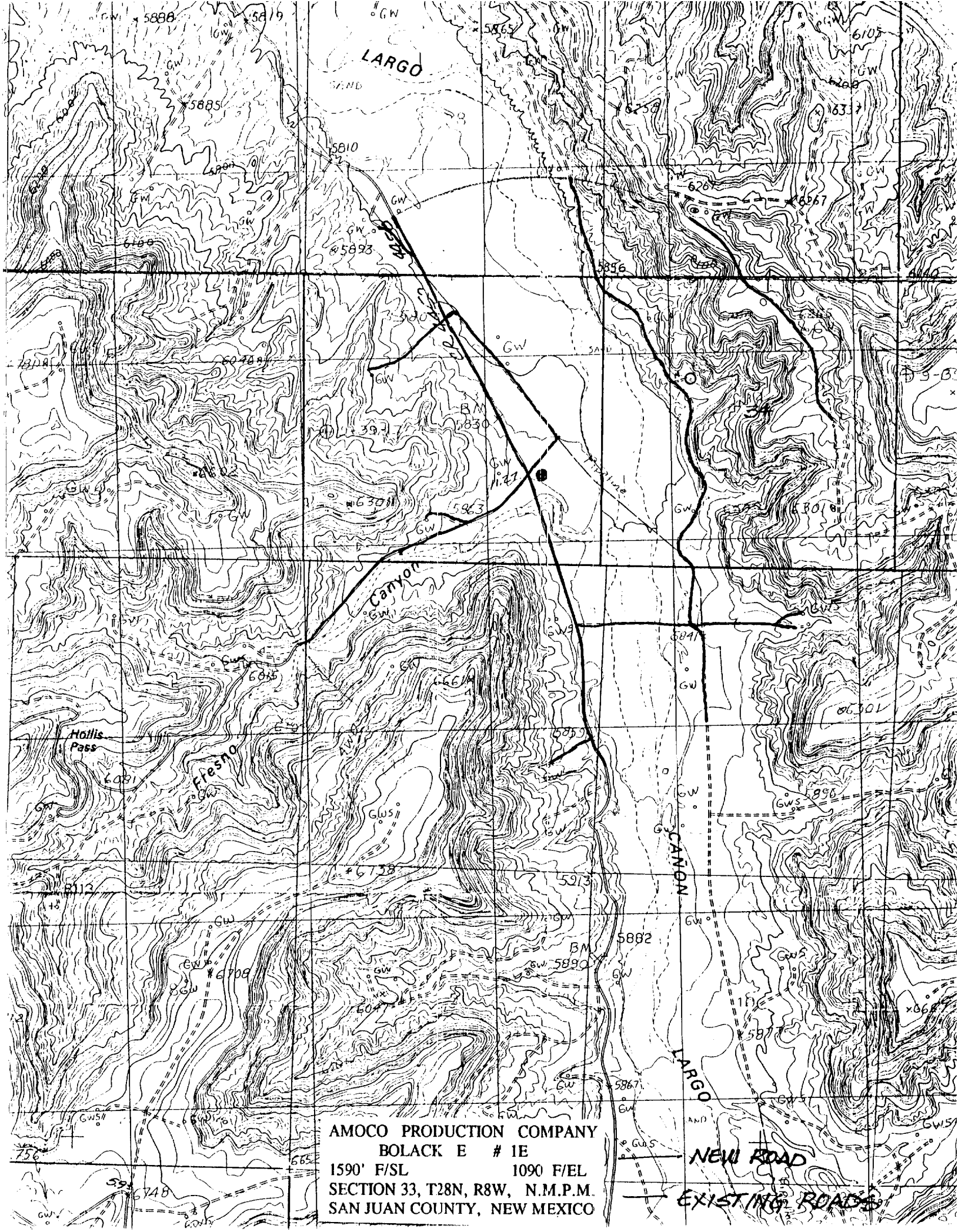
## 11 Bottom Hole Location If Different From Surface

UL, or lot no.	Section	Township	Range	Lot Ida	Feet from the	North/South line	Feet from the	East/West line	County
----------------	---------	----------	-------	---------	---------------	------------------	---------------	----------------	--------

" Dedicated Acres 295.36	" Joint or Infill	" Consolidation Code	" Order No.
-----------------------------	-------------------	----------------------	-------------

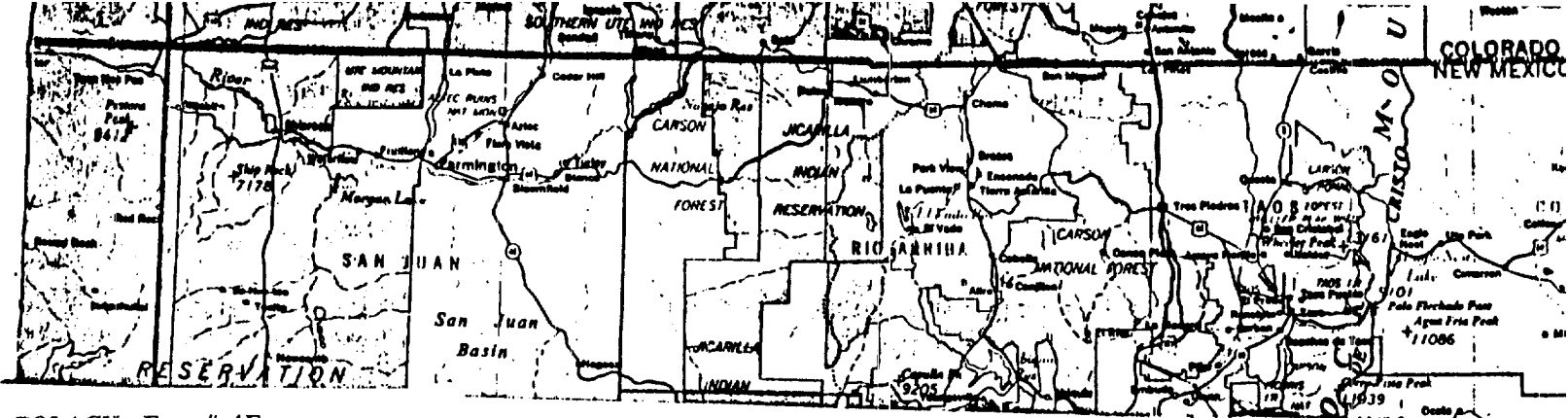
NO ALLOWABLE WILL BE ASSIGNED TO THIS COMPLETION UNTIL ALL INTERESTS HAVE BEEN CONSOLIDATED  
OR A NON-STANDARD UNIT HAS BEEN APPROVED BY THE DIVISION

16					<p><b>17 OPERATOR CERTIFICATION</b></p> <p>I hereby certify that the information contained herein is true and complete to the best of my knowledge and belief</p> <div style="border-bottom: 1px solid black; margin-bottom: 5px;"> </div> <p>Signature _____</p> <p>Julie L. Acevedo</p> <p>Printed Name _____</p> <p>Sr. Staff Assistant</p> <p>Title _____</p> <p>3/9/95</p> <p>Date _____</p>
			<p><b>RECEIVED</b></p> <p>MAY 17 1995</p> <p><b>OIL CON. DIV.</b></p> <p><b>DIST. 3</b></p>		
		33			<p><b>18 SURVEYOR CERTIFICATION</b></p> <p>I hereby certify that the well location shown on this plat was plotted from field notes of actual surveys made by me or under my supervision, and that the same is true and correct to the best of my belief.</p> <p style="text-align: center; font-weight: bold;">February 9, 1995</p> <p>Date of Survey _____</p> <p>Signature and Seal of Professional Surveyor: _____</p> <div style="text-align: center;"> </div> <p>7016</p> <p>Certificate Number _____</p>
			1320'		



AMOCO PRODUCTION COMPANY  
BOLACK E # 1E  
1590' F/SL 1090 F/EL  
SECTION 33, T28N, R8W, N.M.P.M.  
SAN JUAN COUNTY, NEW MEXICO

NEW ROAD  
EXISTING ROADS



BOLACK E # 1E  
1590' F/SL 1090 F/EL  
SECTION 33, T28N, R8W, N.M.P.M.  
RAIL POINT: 174 miles from Montrose, Co.  
MUD POINT: 31 miles from Aztec, N.M.  
CEMENT POINT: 35 miles from Farmington, N.M.

