

UNITED STATES
DEPARTMENT OF THE INTERIOR
BUREAU OF LAND MANAGEMENT

APPLICATION FOR PERMIT TO DRILL OR DEEPEN

1A. TYPE OF WORK

DRILL ☒DEEPEN ☐

B. TYPE OF WELL

OIL
WELL ☐GAS
WELL ☒

OTHER

SINGLE
ZONE ☒MULTIPLE
ZONE ☐

2. NAME OF OPERATOR

DUGAN PRODUCTION CORP. 6515

3. ADDRESS AND TELEPHONE NO.

P.O. Box 420, Farmington, NM 87499

4. LOCATION OF WELL (Report location clearly and in accordance with any State requirements.)

At surface
2500' FNL & 990' FEL (SE/4 NE/4)
At proposed prod. zone

14. DISTANCE IN MILES AND DIRECTION FROM NEAREST TOWN OR POST OFFICE*

3 miles northwest of El Paso Natural Gas Chaco Plant

16. DISTANCE FROM PROPOSED*

LOCATION TO NEAREST
PROPERTY OR LEASE LINE, FT. 990'(Also to nearest drig. unit line, if any)
1200' from
TO NEAREST WELL, DRILLING, COMPLETED,
OR APPLIED FOR, ON THIS LEASE, FT. DPC Lobo #1

16. NO. OF ACRES IN LEASE

640

19. PROPOSED DEPTH

1281'

17. NO. OF ACRES ASSIGNED
TO THIS WELL

E/ 320

20. ROTARY OR CABLE TOOLS

Rotary

21. ELEVATIONS (Show whether DF, RT, GR, etc.)

5917' GL (est)

22. APPROX. DATE WORK WILL START*

ASAP

23.

PROPOSED CASING AND CEMENTING PROGRAM

SIZE OF HOLE	GRADE SIZE OF CASING	WEIGHT PER FOOT	SETTING DEPTH	QUANTITY OF CEMENT
9-7/8"	7"	20#	120'	50 sx (59 cu.ft.) circ. to surf.
6-1/4"	4 1/2"	10.5#	1281'	135 sx (225 cu.ft.) circ. to surf.

This action is subject to technical and
procedural review pursuant to 43 CFR 3185.3
and appeal pursuant to 43 CFR 3185.4.DRILLING OPERATIONS AUTHORIZED ARE
SUBJECT TO COMPLIANCE WITH ATTACHED
"GENERAL REQUIREMENTS".

Plan to drill a 9-7/8" hole and set 120' of 7" OD, 20#, J-55 surface casing;
then plan to drill a 6-1/4" hole to total depth with gel-water-mud program to
test the Fruitland Coal formation. Plan to run IES and CDL logs. If determined
productive, will run 4 1/2", 10.5#, J-55 casing, selectively perforate, frac,
clean out after frac and complete well.

RECEIVED
APR 25 1997OIL CON. DIV.
DIST. 3RECEIVED
BLM
96 JUL 16 PM 3:47
070 FARMINGTON, NMIN ABOVE SPACE DESCRIBE PROPOSED PROGRAM: If proposal is to deepen, give data on present productive zone and proposed new productive zone. If proposal is to drill or
deepen directionally, give pertinent data on subsurface locations and measured and true vertical depths. Give blowout preventer program, if any.

24.

SIGNED

Sherman E. Dugan

TITLE

Vice-President

DATE

6/19/96

(This space for Federal or State office use)

PERMIT NO.

APPROVAL DATE

Application approval does not warrant or certify that the applicant holds legal or equitable title to those rights in the subject lease which would entitle the applicant to conduct operations thereon.
CONDITIONS OF APPROVAL, IF ANY:

APPROVED BY /S/ Duane W. Spencer

TITLE

DATE

JUN 28 1996

*See Instructions On Reverse Side

Title 18 U.S.C. Section 1001, makes it a crime for any person knowingly and willfully to make to any department or agency of the
United States any false, fictitious or fraudulent statements or representations as to any matter within its jurisdiction.

NMOCD

District I
PO Box 1988, Hobbs, NM 88241-1988
District II
PO Drawer DD, Artesia, NM 88211-8719
District III
1000 Rio Brazos Rd., Aztec, NM 87410
District IV
PO Box 2088, Santa Fe, NM 87504-2088

State of New Mexico
Energy, Minerals & Natural Resources Department

OIL CONSERVATION DIVISION
PO Box 2088
Santa Fe, NM 87504-2088

Form C-102
Revised February 21, 1994
Instructions on back
Submit to Appropriate District Office
State Lease - 4 Copies
Fee Lease - 3 Copies

RECEIVED
JUL 16 PM 3:47

☐ AMENDED REPORT

WELL LOCATION AND ACREAGE DEDICATION PLAT

1 API Number 30 045 29455		2 Pool Code 71629		3 Pool Name Basin Fruitland Coal		
4 Property Code 003586		5 Property Name Bengal C			6 Well Number 90	
7 OGRID No. 006515		8 Operator Name Dugan Production Corporation			9 Elevation 5917 Estimated	

10 Surface Location

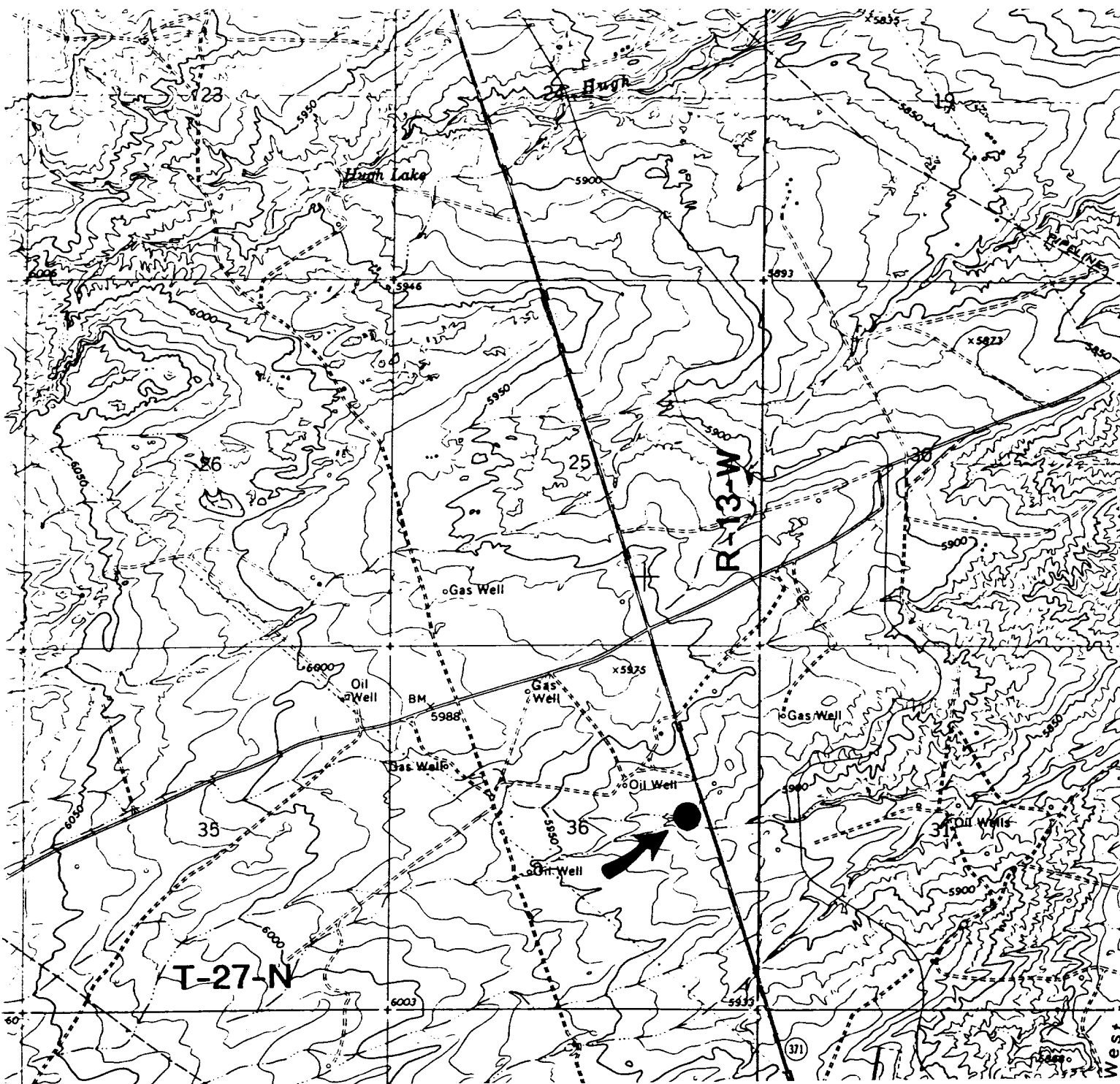
UL or lot no. H	Section 36	Township 27N	Range 13W	Lot Idn	Feet from the 2500	North/South line North	Feet from the 990	East/West line East	County San Juan
--------------------	---------------	-----------------	--------------	---------	-----------------------	---------------------------	----------------------	------------------------	--------------------

11 Bottom Hole Location If Different From Surface

UL or lot no.	Section	Township	Range	Lot Idn	Feet from the	North/South line	Feet from the	East/West line	County
12 Dedicated Acres 320		13 Joint or Infill		14 Consolidation Code		15 Order No.			

NO ALLOWABLE WILL BE ASSIGNED TO THIS COMPLETION UNTIL ALL INTERESTS HAVE BEEN CONSOLIDATED
OR A NON-STANDARD UNIT HAS BEEN APPROVED BY THE DIVISION

16		Dugan Prod. NM 16476		2500'		17 OPERATOR CERTIFICATION I hereby certify that the information contained herein is true and complete to the best of my knowledge and belief Signature Sherman E. Dugan Printed Name Vice-President Title 6/19/96 Date	
RECEIVED APR 25 1997 OIL CON. DIV. BFL 3		Section 36		990'		18 SURVEYOR CERTIFICATION I hereby certify that the well location shown on this plat was plotted from field notes of actual surveys made by me or under my supervision, and that the same is true and correct to the best of my belief. August 2, 1995 Date of Survey Signature and Seal of Surveyor: EDGAR L. RISENHOVER NEW MEXICO 5979 Certification Number	



Dugan Production Corp. - Bengal C #90
Existing Roads Exhibit E

Vicinity of nearest town or reference pt.
3 miles northwest of EPNG Chaco Plant

Type of surface dirt

Conditions good

Other _____

Reference map: USGS map - Moncisco Wash, NM

Planned Access Road(s)

Exhibit E

Width _____ Maximum grades _____

Drainage design as required

Cuts & Fills as required

Surfacing material none

☒ Turnouts ☐ Waterbars

☐ Culverts ☐

☒ Gates ☐ Access Road & Pipeline

☒ Cattleguards ☐

☒ Fence cuts ☐

Access road(s) ☒ do not cross Fed/Ind land.

No New Access Road Required