

UNITED STATES DEPARTMENT OF THE INTERIOR BUREAU OF LAND MANAGEMENT

APPLICATION FOR PERMIT TO DRILL OR DEEPEN

5. LEASE DESIGNATION AND SERIAL NO. NM020496
6. IF INDIAN, ALLOTTEE OR TRIBE NAME
7. UNIT AGREEMENT NAME
8. FARM OR LEASE NAME, WELL NO. Yockey No. 4R 14240
9. API WELL NO. 30045-39671
10. FIELD AND POOL, OR WILDCAT West Kutz Pictured Cliffs
11. SEC., T., R., M., OR BLK AND SURVEY OR AREA Sec. 20, T27N, R11W, NMPM
12. COUNTY San Juan 13. STATE NM
22. APPROX. DATE WORK WILL START* February, 1998

a. TYPE OF WORK DRILL [X] DEEPEN []
b. TYPE OF WELL OIL WELL [] GAS WELL [X] OTHER [] SINGLE ZONE [X] MULTIPLE ZONE []
2. NAME OF OPERATOR Roddy Production Company 36845
3. ADDRESS AND TELEPHONE NO. P. O. Box 2221, Farmington, NM, 87499 505 - 325 - 5220
4. LOCATION OF WELL (Report location clearly and in accordance with any State requirements.) At surface 1570' FSL - 1800' FWL
14. DISTANCE IN MILES AND DIRECTION FROM NEAREST TOWN OR POST OFFICE* 11 miles SW of Bloomfield, New Mexico
15. DISTANCE FROM PROPOSED LOCATION TO NEAREST PROPERTY OR LEASE LINE, FT 1570
16. NO. OF ACRES IN LEASE 640
17. NO. OF ACRES ASSIGNED TO THIS WELL 160
18. DISTANCE FROM PROPOSED LOCATION TO NEAREST WELL, DRILLING, COMPLETED, OR APPLIED FOR, ON THIS LEASE, FT 110'
19. PROPOSED DEPTH 1946'
20. ROTARY OR CABLE TOOLS Rotary
21. ELEVATIONS (Show whether OF, RT, OR, etc.) 6193' GL
22. APPROX. DATE WORK WILL START* February, 1998

RECEIVED SEP 21 1998

OIL CON. DIV. DIST. 3

This section is subject to technical and procedural review pursuant to 43 CFR 3165.3 and appeal pursuant to 43 CFR 3165.4

Table with 5 columns: SIZE OF HOLE, GRADE, SIZE OF CASING, WEIGHT PER FOOT, SETTING DEPTH, QUANTITY OF CEMENT. Includes rows for 12.250" and 7.875" hole sizes.

Roddy Production Company proposes to spud in the Nacimiento formation and drill a 12 1/4 " hole to 200 '. Run and cement surface casing with cement returns to surface. WOC 12 hours. Test casing and BOPE to 600 psig for 15 minutes. Drill a 7 7/8 " hole to 1946 ' using a fresh water mud system. No abnormal pressures or poisonous gases are anticipated. Log well from TD to base of surface casing. Run and cement production casing with cement returns to surface. WOC 12 hours. Move out drilling rig and move in completion unit. Test casing to 2500 psig. Run cased hole correlation logs. Perforate Pictured Cliffs and stimulate with a fresh water based foam system.

Surface ownership is Federal (NAPI). Existing Road and Pipeline Right of Way are included in this application.

IN ABOVE SPACE DESCRIBE PROPOSED PROGRAM: If proposal is to deepen, give data on present productive zone and proposed new productive zone. If proposal is to drill or deepen directionally give pertinent data on subsurface locations and measured true vertical depths. Give blowout preventer program, if any.

24 SIGNED [Signature] TITLE Agent DATE January 15, 1998

(This space for Federal or State office use)

PERMIT NO. APPROVAL DATE SEP 15 1998

Application approval does not warrant or certify that the applicant holds legal or equitable title to those rights in the subject lease which would entitle the applicant to conduct operations thereon. CONDITIONS OF APPROVAL, IF ANY

APPROVED BY [Signature] TITLE DATE SEP 15 1998

[Handwritten initials]

NMOCD

District I
 PO Box 1980, Hobbs, NM 88241-1980
 District II
 PO Drawer DD, Artesia, NM 88211-0719
 District III
 1000 Rio Hrazos Rd., Aztec, NM 87410
 District IV
 PO Box 2088, Santa Fe, NM 87504-2088

State of New Mexico
 Energy, Minerals & Natural Resources Department

OIL CONSERVATION DIVISION
 PO Box 2088
 Santa Fe, NM 87504-2088

Form C-102
 Revised February 21, 1994
 Instructions on back
 Submit to Appropriate District Office
 State Lease - 4 Copies
 Fee Lease - 3 Copies

AMENDED REPORT

WELL LOCATION AND ACREAGE DEDICATION PLAT

API Number 30-045-296-71		Pool Code 79860	Pool Name W. Kutz Pictured Cliffs
Property Code 14240	Property Name Yockey		Well Number 4R
OGRID No. 36845	Operator Name RODDY PRODUCTION INC.		Elevation 6193'

10 Surface Location

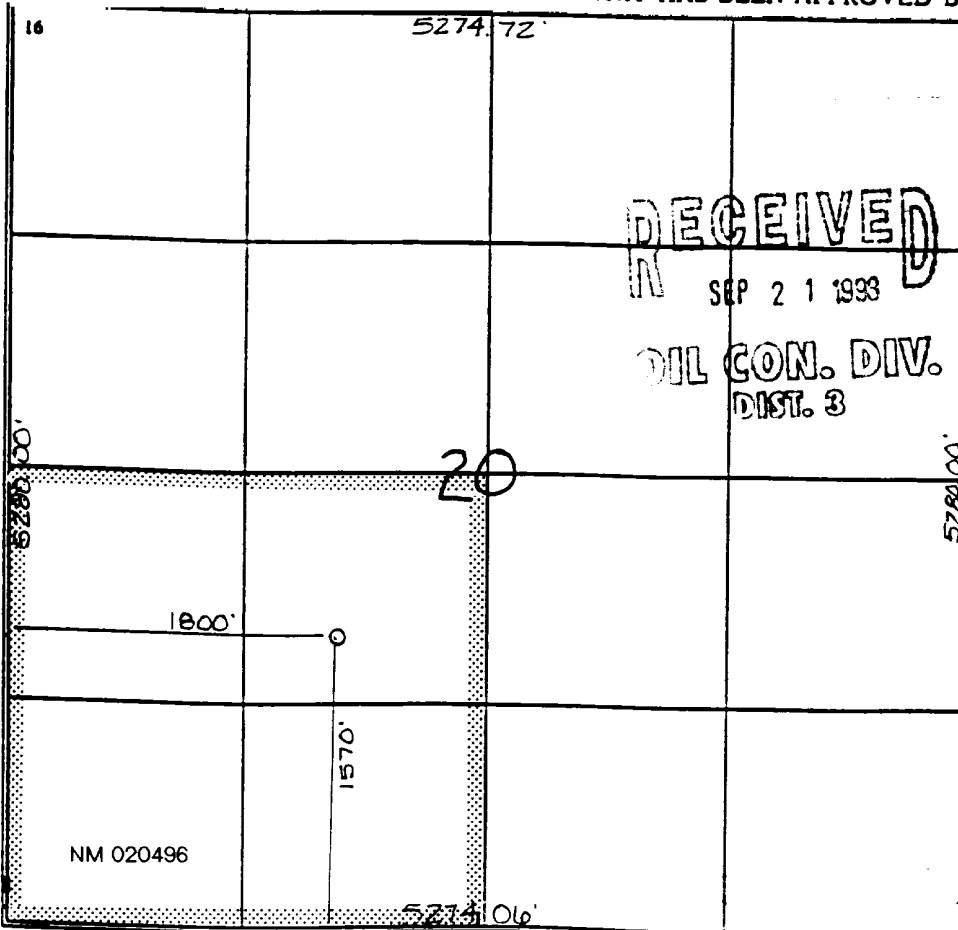
UL or lot no.	Section	Township	Range	Lot Ida	Feet from the	North/South line	Feet from the	East/West line	County
K	20	27 N	11 W		1570	South	1800	West	S.J.

11 Bottom Hole Location If Different From Surface

UL or lot no.	Section	Township	Range	Lot Ida	Feet from the	North/South line	Feet from the	East/West line	County

12 Dedicated Acres 160	13 Joint or Infill	14 Consolidation Code	15 Order No.
---------------------------	--------------------	-----------------------	--------------

NO ALLOWABLE WILL BE ASSIGNED TO THIS COMPLETION UNTIL ALL INTERESTS HAVE BEEN CONSOLIDATED OR A NON-STANDARD UNIT HAS BEEN APPROVED BY THE DIVISION



17 OPERATOR CERTIFICATION

I hereby certify that the information contained herein is true and complete to the best of my knowledge and belief

John D. Steuble
 Signature
 John D. Steuble
 Printed Name
 AGENT
 Title
 1-15-98
 Date

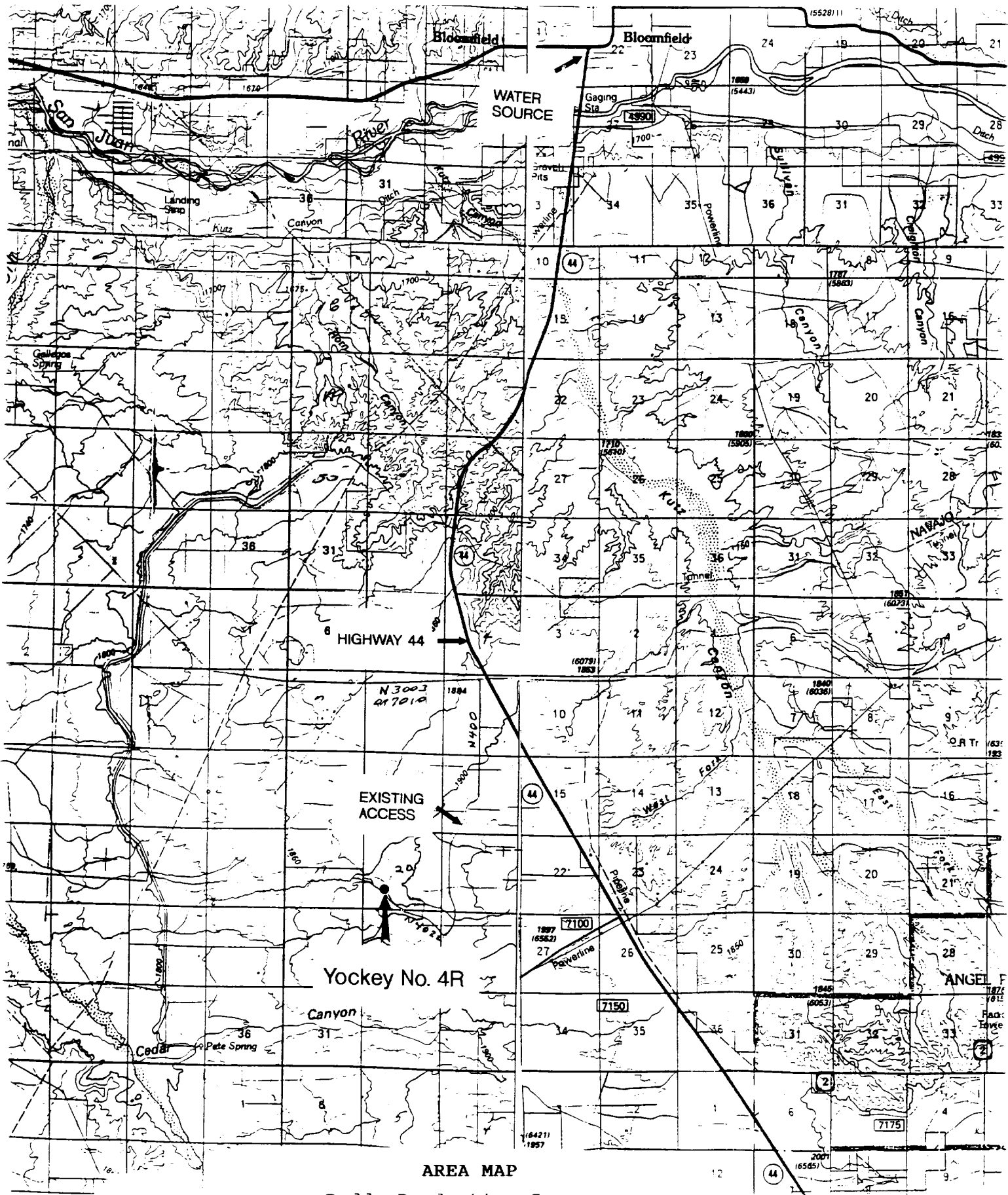
18 SURVEYOR CERTIFICATION

I hereby certify that the well location shown on this plat was plotted from field notes of actual surveys made by me or under my supervision, and that the same is true and correct to the best of my belief.

7-23-96
 Date of Survey
 Signature and Seal of Professional Approver:

 Certificate Number

RECEIVED
 SEP 21 1993
 OIL CON. DIV.
 DIST. 3



AREA MAP

Roddy Production Company
 Yockey No. 4R
 1570' FSL & 1800' FWL
 Sec 20, T27N, R11W, NMPM
 San Juan County, New Mexico