

UNITED STATES  
DEPARTMENT OF THE INTERIOR  
BUREAU OF LAND MANAGEMENT

RECEIVED  
BLM

APPLICATION FOR PERMIT TO DRILL OR DEEPEN

1a. TYPE OF WORK

DRILL ☒

DEEPEN ☐

b. TYPE OF WELL

OIL  
WELL ☐

GAS  
WELL ☒

OTHER

2. NAME OF OPERATOR

Bonneville Fuels Corporation

3. ADDRESS AND TELEPHONE NO.

1660 Lincoln St. Suite 2200 Denver, CO 80264 (303) 576-2562

4. LOCATION OF WELL (Report location clearly and in accordance with any State requirements.)

At surface

1850' FSL & 1850' FWL  
At proposed prod. zone

14. DISTANCE IN MILES AND DIRECTION FROM NEAREST TOWN OR POST OFFICE\*

10 Miles SW of Bloomfield, NM

15. DISTANCE FROM PROPOSED\*

LOCATION TO NEAREST  
PROPERTY OR LEASE LINE, FT.  
(Also to nearest drig. unit line, if any) 1850'

18. DISTANCE FROM PROPOSED LOCATION\*

TO NEAREST WELL, DRILLING, COMPLETED,  
OR APPLIED FOR, ON THIS LEASE, FT. 1,485'

16. NO. OF ACRES IN LEASE

±2,560c

19. PROPOSED DEPTH

6800' 6650'

17. NO. OF ACRES ASSIGNED

TO THIS WELL 320 ac/80 ac

20. ROTARY OR CABLE TOOLS

Rotary

21. ELEVATIONS (Show whether DF, RT, GR, etc.)

GR 6,118' (est)

22. APPROX. DATE WORK WILL START\*

December 1, 1998

23.

PROPOSED CASING AND CEMENTING PROGRAM

SIZE OF HOLE	GRADE, SIZE OF CASING	WEIGHT PER FOOT	SETTING DEPTH	QUANTITY OF CEMENT
12 1/4	8 5/8" J-55 ST&C	24#	±300	175 sx CI-B Cmt. To Surf.
7-7/8"	4-1/2" J-55 LT/L	11.6#	±6800' 6650'	425 sx '50/50 Poz G + 675 sx 65/30 Poz G

This action is subject to technical and  
procedural review pursuant to 43 CFR 3165.3  
and appeal pursuant to 43 CFR 3165.4.

DRILLING OPERATIONS AUTHORIZED ARE  
SUBJECT TO COMPLIANCE WITH ATTACHED  
"GENERAL REQUIREMENTS"

Attached: 13 Pt Surface Use Plan w/ Archaeology Report  
8 Pt Drilling Plan  
Exhibit 1 BOP diagram  
Exhibit 2a C102 Form  
Well Location & Acreage Dedication Plat -Gallup  
Exhibit 2b C102 Form  
Well Location & Acreage Dedication Plat - Dakota  
Exhibit 3 Vicinity Map

Exhibit 4 One Mile Radius Map  
Exhibit 5 Topography & Pad Layout  
Exhibit 6 Cut & Fill Diagram  
Exhibit 7 Rig Layout  
Exhibit 8 Production Facility Layout  
Exhibit 9 Pipeline survey

IN ABOVE SPACE DESCRIBE PROPOSED PROGRAM: If proposal is to deepen, give data on present productive zone and proposed new productive zone. If proposal is to drill or deepen directionally, give pertinent data on subsurface locations and measured and true vertical depths. Give blowout preventer program, if any.

24.

Alan L. Merrill

Operations Engineer

11/20/98

SIGNED

TITLE

DATE

(This space for Federal or State office use)

PERMIT NO.

APPROVAL DATE

Application approval does not warrant or certify that the applicant holds legal or equitable title to those rights in the subject lease which would entitle the applicant to conduct operations thereon.  
CONDITIONS OF APPROVAL, IF ANY:

Diene W. Spencer

JAN 20 1999

APPROVED BY

TITLE

DATE

\*See Instructions Reverse Side

Title 18 U.S.C. Section 1001 makes it a crime for any person knowingly and willfully to make to any department or agency of the

District I  
190 Box 1980, Hobbs, NM 88241-1980  
District II  
811 South First, Artesia, NM 88210  
District III  
1000 Rio Brazos Rd., Aztec, NM 87410  
District IV  
2040 South Pacheco, Santa Fe, NM 87505

State of New Mexico  
Energy, Minerals & Natural Resources Department

RECEIVED  
OIL CONSERVATION DIVISION BLM  
2040 South Pacheco  
Santa Fe, NM 87505  
58 NOV 23 AM 9:27

Form C-102  
Revised October 18, 1994  
Instructions on back  
Submit to Appropriate District Office  
State Lease - 4 Copies  
Fee Lease - 3 Copies

☐ AMENDED REPORT

WELL LOCATION AND ACREAGE DEDICATION PLAT  
070 FARMINGTON, NM

APL Number 30-045-29740		Pool Code 96852	Pool Name South Kutz-Gallup
Property Code 24188	Property Name FULLERTON FEDERAL 23 CD		Well Number 11-23CD
GRID No. 02678	Operator Name BONNEVILLE FUELS		Elevation 6118

10 Surface Location

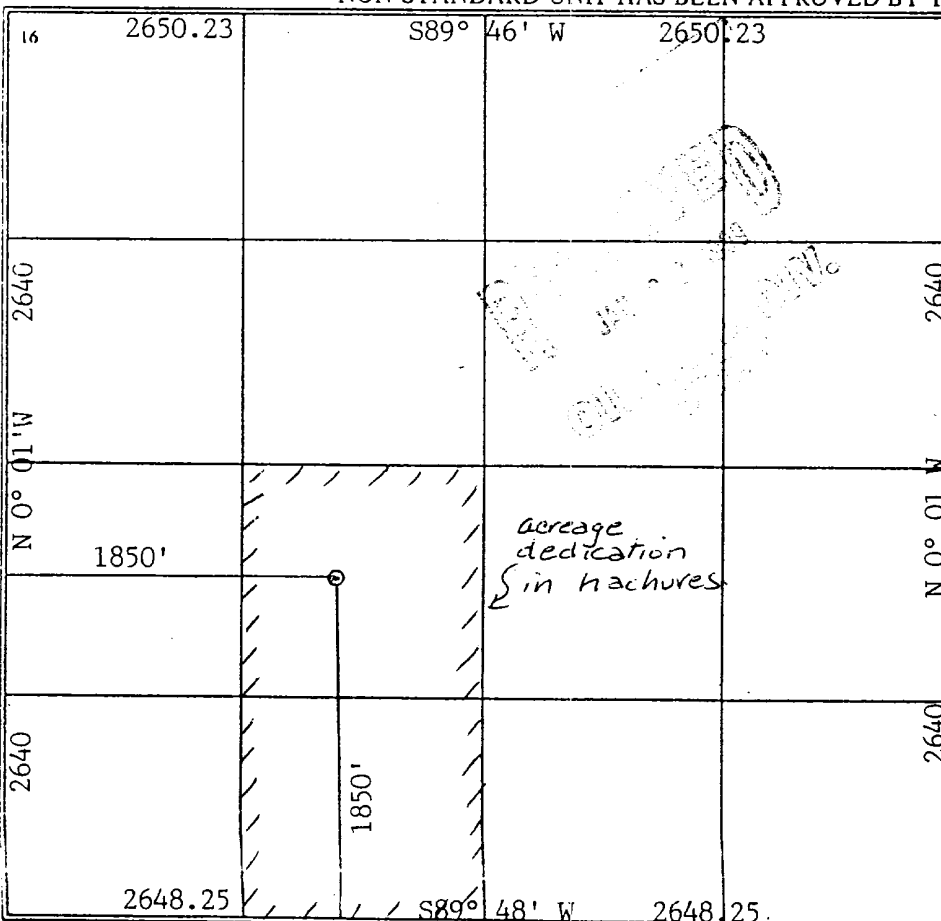
UL or lot no. K	Section 11	Township 27N	Range 11W	Lot Idn	Feet from the 1850	North/South line SOUTH	Feet from the 1850	East/West line WEST	County SAN JUAN
--------------------	---------------	-----------------	--------------	---------	-----------------------	---------------------------	-----------------------	------------------------	--------------------

11 Bottom Hole Location If Different From Surface

UL or lot no.	Section	Township	Range	Lot Idn	Feet from the	North/South line	Feet from the	East/West line	County
---------------	---------	----------	-------	---------	---------------	------------------	---------------	----------------	--------

12 Dedicated Acres	13 Joint or Infill	14 Consolidation Code	15 Order No.
--------------------	--------------------	-----------------------	--------------

NO ALLOWABLE WILL BE ASSIGNED TO THIS COMPLETION UNTIL ALL INTERESTS HAVE BEEN CONSOLIDATED OR A NON-STANDARD UNIT HAS BEEN APPROVED BY THE DIVISION



17 OPERATOR CERTIFICATION

I hereby certify that the information contained herein is true and complete to the best of my knowledge and belief

Signature *Alan L. Merrill*

Printed Name Alan L. Merrill

Title Operations Engineer

Date 11/20/98

Date

18 SURVEYOR CERTIFICATION

I hereby certify that the well location shown on this plat was plotted from field notes of actual surveys made by me or under my supervision, and that the same is true and correct to the best of my belief.

NOVEMBER 5, 1998

Date of Survey

Signature and Seal of Professional Surveyor:



Cecil D. Willis

Certificate Number 9672

Exhibit 2a

District I  
PO Box 1980, Hobbs, NM 88241-1980  
District II  
811 South First, Artesia, NM 88210  
District III  
1000 Rio Brazos Rd., Aztec, NM 87410  
District IV  
2040 South Pacheco, Santa Fe, NM 87505

State of New Mexico  
Energy, Minerals & Natural Resources Department

OIL CONSERVATION DIVISION

2040 South Pacheco  
Santa Fe, NM 87505

RECEIVED

NOV 23 AM 9:27

Form C-102

Revised October 18, 1994

Instructions on back

Submit to Appropriate District Office

State Lease - 4 Copies

Fee Lease - 3 Copies

☐ AMENDED REPORT

070 FARMINGTON, NM

WELL LOCATION AND ACREAGE DEDICATION PLAT

1. API Number 30-045-23740		2. Pool Code 71599		3. Pool Name Basin Dakota	
4. Property Code 24188		5. Property Name FULLERTON FEDERAL 23GD			6. Well Number 11-2380
7. OGRID No. 02678		8. Operator Name BONNEVILLE FUELS			9. Elevation 6118

10 Surface Location

UL or lot no. K	Section 11	Township 27N	Range 11W	Lot Idn	Feet from the 1850	North/South line SOUTH	Feet from the 1850	East/West line WEST	County SAN JUAN
--------------------	---------------	-----------------	--------------	---------	-----------------------	---------------------------	-----------------------	------------------------	--------------------

11 Bottom Hole Location If Different From Surface

UL or lot no.	Section	Township	Range	Lot Idn	Feet from the	North/South line	Feet from the	East/West line	County
---------------	---------	----------	-------	---------	---------------	------------------	---------------	----------------	--------

12 Dedicated Acres	13 Joint or Infill	14 Consolidation Code	15 Order No.
--------------------	--------------------	-----------------------	--------------

NO ALLOWABLE WILL BE ASSIGNED TO THIS COMPLETION UNTIL ALL INTERESTS HAVE BEEN CONSOLIDATED OR A NON-STANDARD UNIT HAS BEEN APPROVED BY THE DIVISION

16	2650.23	S89°	46' W	2650.23
2640				2640
N 0° 01' W				
2640				
	1850'			
2648.25		S89°	48' W	2648.25

acreage dedication in hachures

17 OPERATOR CERTIFICATION

I hereby certify that the information contained herein is true and complete to the best of my knowledge and belief

Signature *Alan L. Merrill*

Printed Name Alan L. Merrill

Operations Engineer

Title

Date 11/20/98

18 SURVEYOR CERTIFICATION

I hereby certify that the well location shown on this plat was plotted from field notes of actual surveys made by me or under my supervision, and that the same is true and correct to the best of my belief.

NOVEMBER 9 1998

Date of Survey

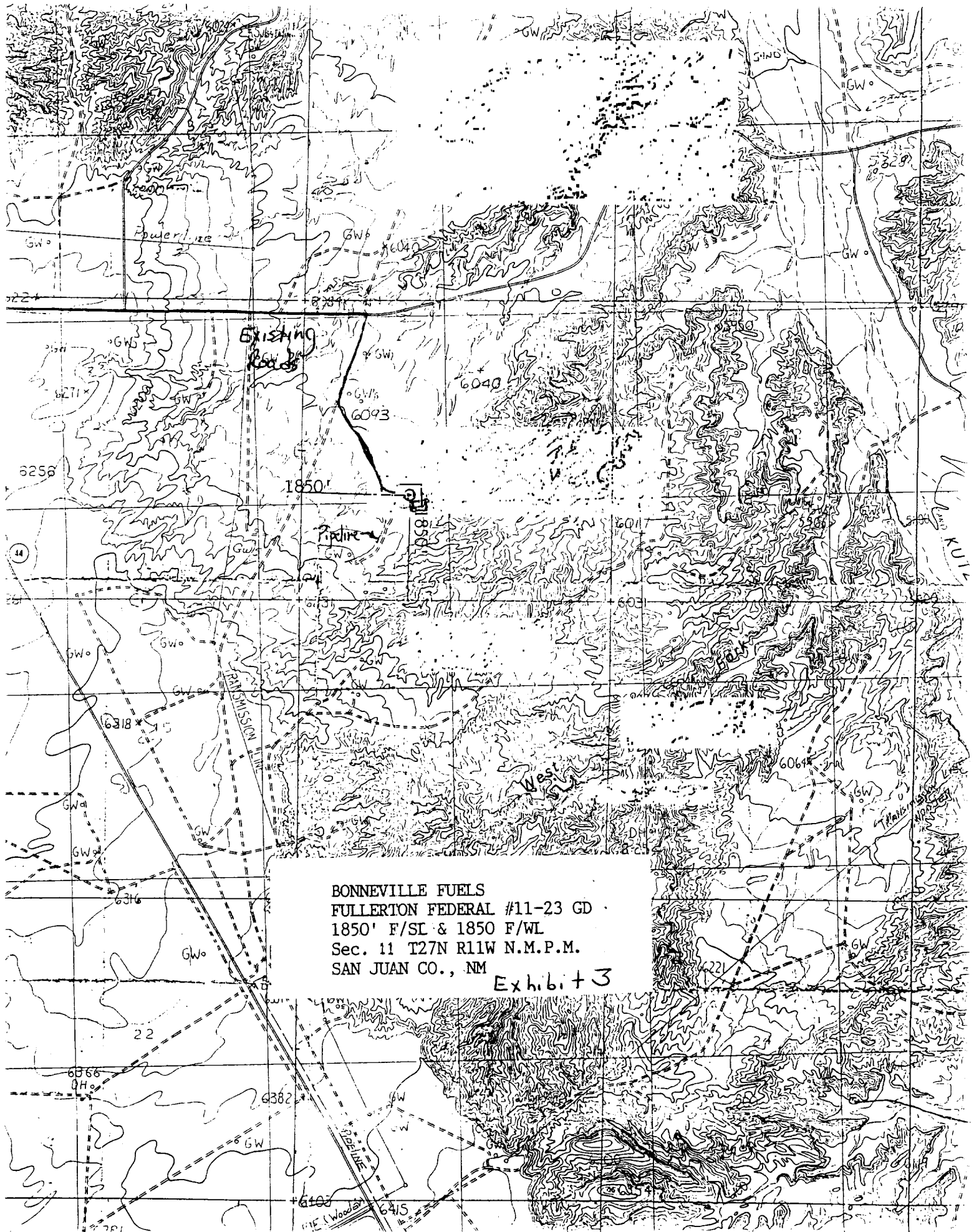
Signature and Seal of Professional Surveyor:

REGISTERED PROFESSIONAL LAND SURVEYOR

Cecil B. Morris

Certificate Number 9672

Exhibit 2b



Bonneville Fuels  
Fullerton Federal #11-23 GD  
1850' F/SL & 1850 F/WL  
Sec. 11 T27N R11W N.M.P.M.  
San Juan Co., NM

Exhibit 3