

District I
PO Box 1980, Hobbs, NM 88241-1980
District II
811 S. 1st Street, Artesia, NM 88210-2834
District III
1000 Rio Brazos Rd., Aztec, NM 87410
District IV
2040 South Pacheco, Santa Fe, NM 87505

State of New Mexico
Energy, Minerals & Natural Resources Department

OIL CONSERVATION DIVISION
2040 South Pacheco
Santa Fe, NM 87505

Form C-101
Revised October 18, 1999
Instructions on back
Submit to Appropriate District O
State Lease - 6 Copies
Fee Lease - 5 Copies

☐ AMENDED REPORT

APPLICATION FOR PERMIT TO DRILL, RE-ENTER, DEEPEN, PLUGBACK, OR ADD A ZONE

¹ Operator name and Address Cross Timbers Operating Company 2700 Farmington Ave., Bldg. K. Ste 1 Farmington, NM 87401		² OGRID Number 167067
⁴ Property Code 23631	⁵ Property Name R. B. SULLIVAN	³ API Number 30-0 45-30-155
		⁶ Well No. 1R

UL or lot no.	Section	Township	Range	Lot. Idn	Feet from the	North/South Line	Feet from the	East/West line	County
G	11	27N	10W		1,400'	NORTH	2,500'	EAST	SAN JUAN

⁸ Proposed Bottom Hole Location If Different From Surface									
UL or lot no.	Section	Township	Range	Lot. Idn	Feet from the	North/South Line	Feet from the	East/West line	County
⁹ Proposed Pool 1 FULCHER KUTZ PICTURED CLIFFS					¹⁰ Proposed Pool 2				

¹¹ Work Type Code N	¹² Well Type Code G	¹³ Cable/Rotary R	¹⁴ Lease Type Code P	¹⁵ Ground Level Elevation 6,034'
¹⁶ Multiple NO	¹⁷ Proposed Depth 2,130'	¹⁸ Formation PICTURED CLIFFS	¹⁹ Contractor UNKNOWN	²⁰ Spud Date APRIL 2000

²¹ Proposed Casing and Cement Program					
Hole Size	Casing Size	Casing weight/foot	Setting Depth	Sacks of Cement	Estimated TOC
8-3/4"	7"	20#, J-55	200'	75	SURFACE
6-1/4"	4-1/2"	10.5#, J-55	2,130'	165	SURFACE

²² Describe the proposed program. If this application is to DEEPEN or PLUG BACK give the data on the present productive zone and proposed new productive zone. Describe the blowout prevention program, if any. Use additional sheets if necessary.

Surface casing cement program: Approximately 75 sx Type III cement containing 1/4 PPS Celloflake, 2% CaCl₂ (mixed at 14.6 ppg, 1.39 cubic feet/sk 6.67 gal wtr/sk). Circulate cement to surface.

Production casing cement program: Approximately 165 sx of 35:65 Poz/Type III cement containing 10 PPS CSE, 3% KCl, 1/4 PPS Celloflake, 0.65% bwoc-FL-62, 6% gel (mixed at 12.5 ppg, 2.07 cubic feet/sk, 10.95 gal wtr/sk). Circulate cement to surface. Actual cement volume will be calculated fr/caliper log.

BOP program: 7-1/16" x 3,000 psig double ram BOP.

²³ I hereby certify that the information given above is true and complete to the best of my knowledge and belief.

Signature:

Printed name: Thomas DeLong

Title: Production Engineer

OIL CONSERVATION DIVISION

Approved by:

Title: DEPUTY OIL & GAS INSPECTOR, DIST. 3

Approval Date:

FEB 18 2000

Expiration Date:

FEB 18 2001

NSL-4403

District I
PO Box 1980, Hobbs, NM 88241-1980

State of New Mexico
Energy, Minerals & Natural Resources Department

Form C-102
Revised February 21, 1994

District II
PO Drawer DD, Artesia, NM 88211-0719

OIL CONSERVATION DIVISION

Instructions on back
Submit to Appropriate District Office
State Lease - 4 Copies
Fee Lease - 3 Copies

District III
1000 Rio Brazos Rd., Aztec, NM 87410

PO Box 2088
Santa Fe, NM 87504-2088

REC'D / SAN JUAN ☐ AMENDED REPORT

District IV
PO Box 2088, Santa Fe, NM 87504-2088

SEP 08 1999

WELL LOCATION AND ACREAGE DEDICATION PLAT

1 API Number 3045-30155		2 Pool Code 77200		3 Pool Name FULCHER KUTZ PICTURED CLIFFS	
4 Property Code 22631		5 Property Name R. B. SULLIVAN			6 Well Number 1R
7 OSRID No. 167057		8 Operator Name CROSS TIMBERS OPERATING COMPANY			9 Elevation 6034'

10 Surface Location

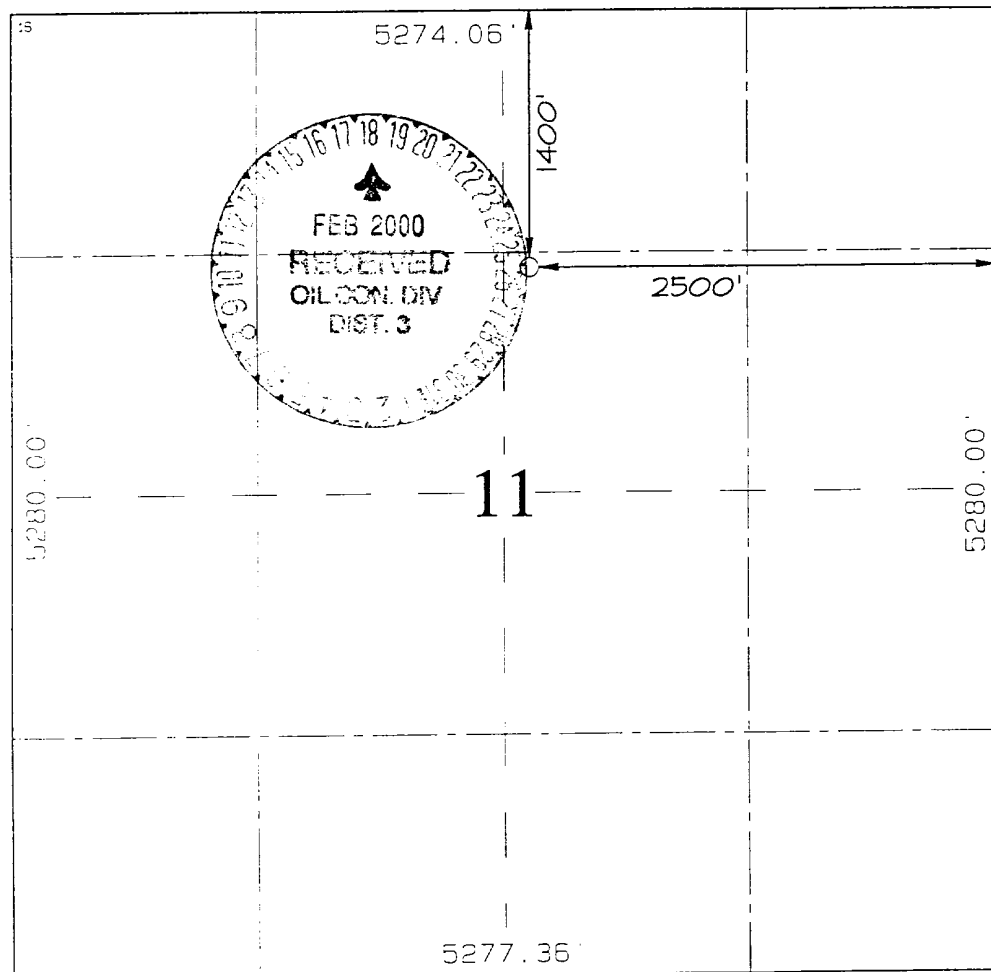

UL or lot no.	Section	Township	Range	Lot Idn	Feet from the	North/South line	Feet from the	East/West line	County
G	11	27N	10W		1400	NORTH	2500	EAST	SAN JUAN

11 Bottom Hole Location If Different From Surface

UL or lot no.	Section	Township	Range	Lot Idn	Feet from the	North/South line	Feet from the	East/West line	County

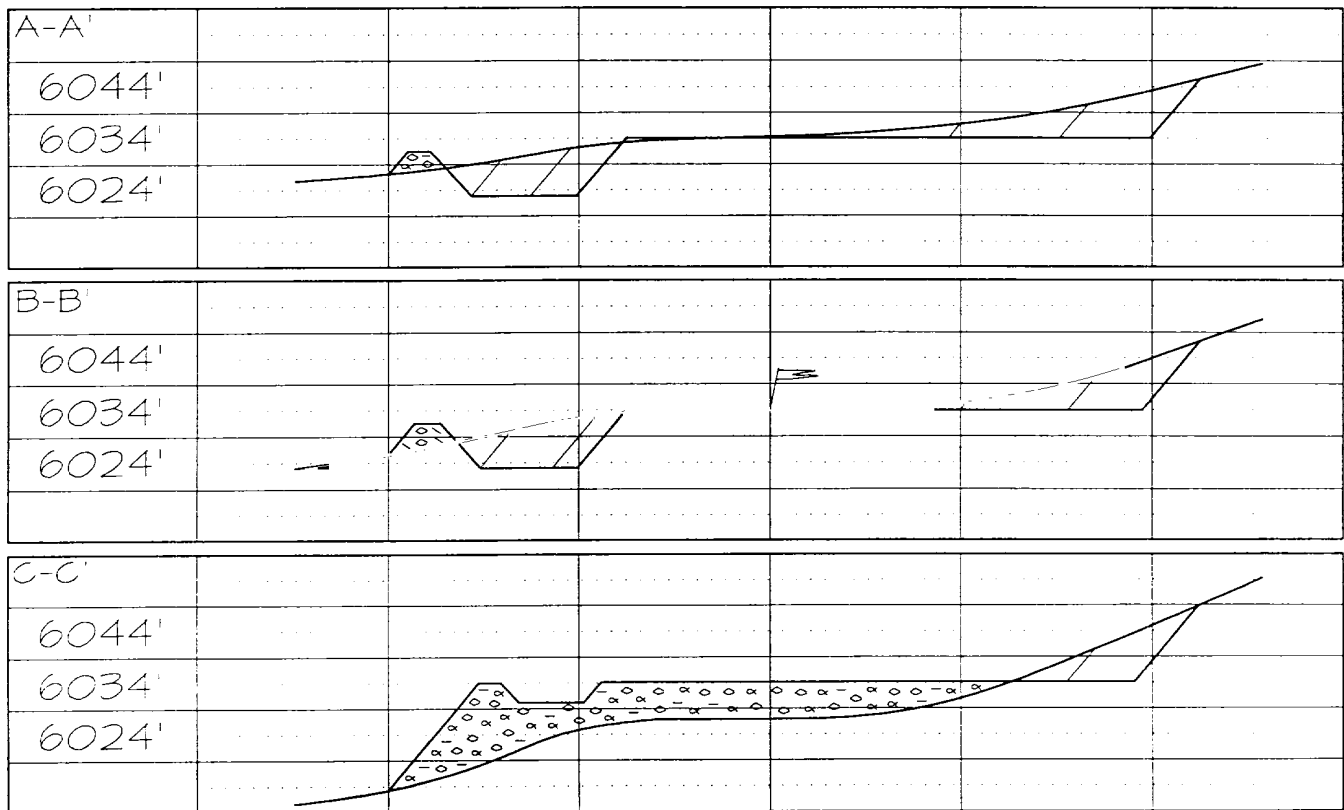
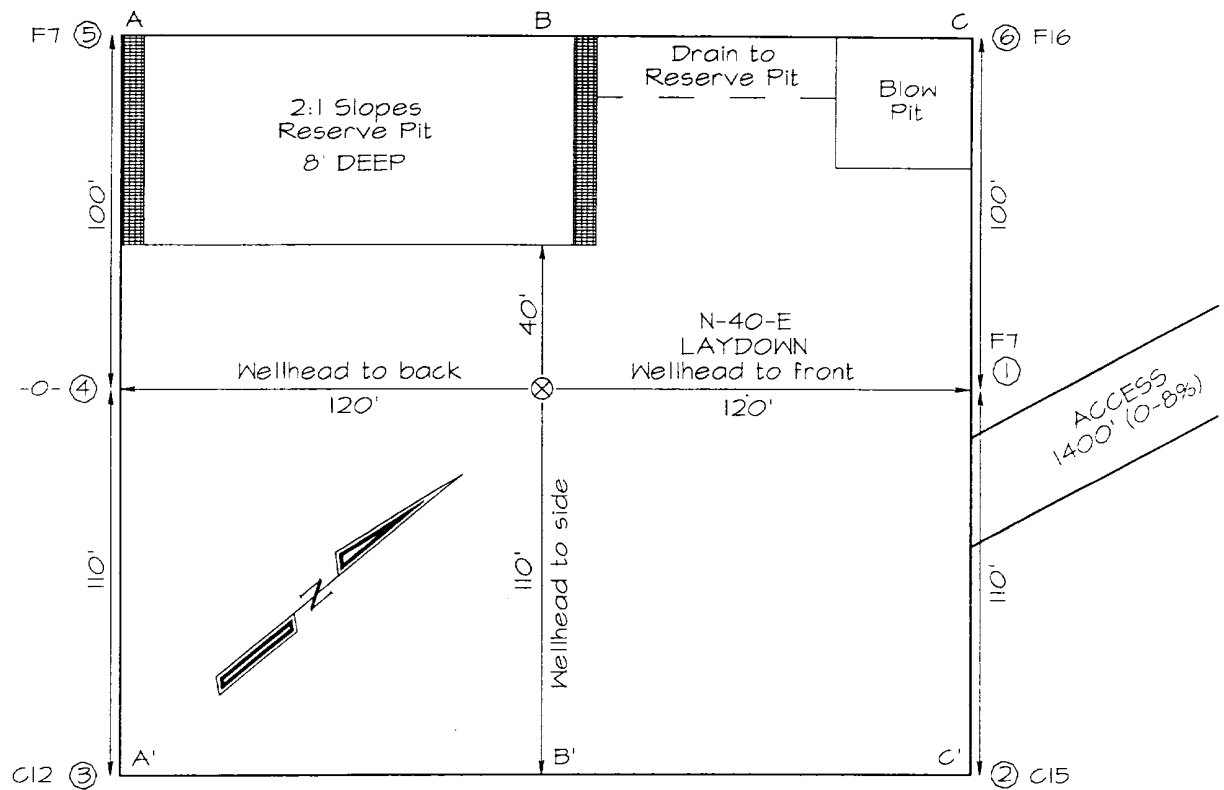
12 Dedicated Acres 160	13 Joint or Infill NE/4	14 Consolidation Code	15 Order No.
----------------------------------	-----------------------------------	-----------------------	--------------

NO ALLOWABLE WILL BE ASSIGNED TO THIS COMPLETION UNTIL ALL INTERESTS HAVE BEEN CONSOLIDATED OR A NON-STANDARD UNIT HAS BEEN APPROVED BY THE DIVISION

<div>16</div> 		<div>17 OPERATOR CERTIFICATION</div> <p>I hereby certify that the information contained herein is true and complete to the best of my knowledge and belief.</p> <p><i>Tom DeLong</i></p> <p>Signature Tom DeLong Printed Name Production Engineer Title 9-8-99 Date</p> <div>18 SURVEYOR CERTIFICATION</div> <p>I hereby certify that the well location shown on this plat was plotted from field notes of actual surveys made by me or under my supervision, and that the same is true and correct to the best of my belief.</p> <p>AUGUST 27, 1999 Date of Survey</p> <p><i>Neale C. Edwards</i> Signature and Seal of Professional Surveyor</p>  <p>Certificate Number 6857</p>
--	--	--

CROSS TIMBERS OPERATING COMPANY R. B. SULLIVAN #1R
1400' FNL & 2500' FEL, SECTION 11, T27N, R10W, NMPM, SAN JUAN COUNTY, NM
GROUND ELEVATION: 6034' DATE: AUGUST 27, 1999

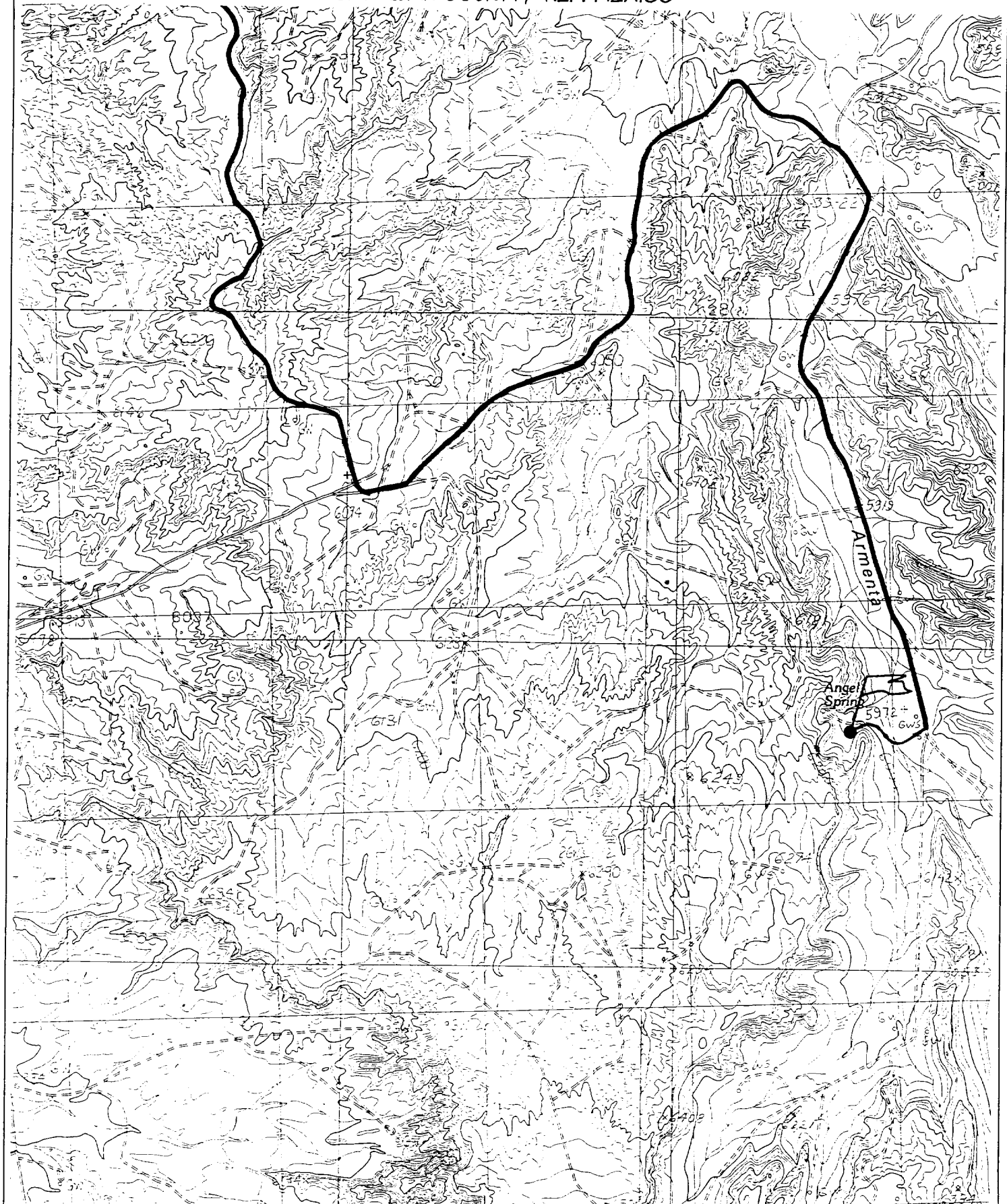
Dirt Contractor should verify at time of construction, whether or not a blow pit will be needed for the particular rig being used.



Note: Contractor should call One-Call for location of any marked or unmarked buried pipelines or cables on wellpaa and/or access road at least two (2) working days prior to construction.

CROSS TIMBERS OPERATING COMPANY R. B. SULLIVAN #1R

1400' FNL & 2500' FEL, SECTION II, T27N, R10W, N.M.P.M.
SAN JUAN COUNTY, NEW MEXICO



FEB-15-00 TUE 8:17

P. 01

**NEW MEXICO ENERGY, MINERALS
& NATURAL RESOURCES DEPARTMENT****OIL CONSERVATION DIVISION**
2040 South Pacheco Street
Santa Fe, New Mexico 87505
(505) 827-7131

February 10, 2000

Cross Timbers Operating Company
810 Houston Street - Suite 2000
Fort Worth, Texas 76102-6298
Attention: George A. Cox

Telefax No. (817) 870-1671

Administrative Order NSL-4403

Dear Mr. Cox:

Reference is made to the following: (I) your application dated January 21, 2000; (II) the New Mexico Oil Conservation Division's ("Division") initial response by letter dated January 28, 2000 from Mr. Michael E. Stogner, Engineer in Santa Fe; (III) your response by letter dated February 7, 2000 with the required data to complete this application; and (IV) the records of the Division: all concerning Cross Timbers Operating Company's ("Cross Timbers") request to drill the proposed R. B. Sullivan Well No. 1-R at an unorthodox Pictured Cliffs gas well location 1400 feet from the North line and 2500 feet from the East line (Unit G) of Section 11, Township 27 North, Range 10 West, NMPM, San Juan County, New Mexico. The NE/4 of Section 11 is to be dedicated to the well in order to form a standard 160-acre gas spacing and proration unit for the Fulcher Kutz-Pictured Cliffs Pool.

This application has been duly filed under the provisions of Division Rule 104.F, revised by Division Order No. R-11231, issued by the New Mexico Oil Conservation Commission in Case No. 12119 on August 12, 1999.

The geologic interpretation submitted with this application indicates that a well drilled at the proposed unorthodox gas well location will be at a more favorable geologic position within the potentially gas productive interval of the Pictured Cliffs formation than a well drilled at a location considered to be standard within the subject 160-acre gas spacing and proration unit.

Further, the N/2 of Section 11 is a single fee lease with common mineral interest ownership throughout in which Cross Timbers is the leasehold operator; therefore, there are no effected offsets to the subject 160-acre tract other than Cross Timbers.

By the authority granted me under the provisions of Division Rule 104.F (2), the above-described unorthodox gas well location is hereby approved.

Sincerely,

Lori Wrotenberg
Director

LW/MES/kv

cc: New Mexico Oil Conservation Division - Aztec