

UNITED STATES
DEPARTMENT OF THE INTERIOR
BUREAU OF LAND MANAGEMENT

APPLICATION FOR PERMIT TO DRILL, DEEPEN, OR PLUG BACK

1a. Type of Work DRILL	5. Lease Number SF-078092 Unit Reporting Number
1b. Type of Well GAS	6. If Indian, All. or Tribe Navajo -
2. Operator BURLINGTON RESOURCES Oil & Gas Company	7. Unit Agreement Name
3. Address & Phone No. of Operator PO Box 4289, Farmington, NM 87499 (505) 326-9700	8. Farm or Lease Name Douthit C Federal 9. Well Number #100 -
4. Location of Well 1805' FSL, 1585' FEL 1330' 1800' FSL Latitude 36° 31.8, Longitude 107° 59.3	10. Field, Pool, Wildcat Basin Fruitland Coal 11. Sec., Twn, Rge, Mer. (NMPM) K Sec. 34, T-27-N, R-11-W API # 30-045- 30184 -
14. Distance in Miles from Nearest Town 2 mi from Hilltop Store	12. County San Juan 13. State NM
15. Distance from Proposed Location to Nearest Property or Lease Line 1585'	
16. Acres in Lease	17. Acres Assigned to Well 320 S/2
18. Distance from Proposed Location to Nearest Well, Drig, Compl, or Applied for on this Lease 300'	
19. Proposed Date 1923' -	20. Rotary or Cable Tools Rotary
21. Elevations (DF, FT, GR, Etc.) 6373' GL 6342'	22. Approx. Date Work will Start DRILLING OPERATIONS AUTHORIZED ARE SUBJECT TO COMPLIANCE WITH ATTACHED "GENERAL REQUIREMENTS"
23. Proposed Casing and Cementing Program See Operations Plan attached	
24. Authorized by: <u>Jessy Cole</u> Regulatory/Compliance Administrator	3-6-00 Date

PERMIT NO. _____ APPROVAL DATE _____
APPROVED BY /s/ Jim Lovato TITLE _____ DATE JAN 19 2001

Archaeological Report to be submitted

Threatened and Endangered Species Report to be submitted

NOTE: This format is issued in lieu of U.S. BLM Form 3160-3

Title 18 U.S.C. Section 1001, makes it a crime for any person knowingly and willfully to make to any department or agency of the United States any false, fictitious or fraudulent statements or presentations as to any matter within its jurisdiction.

NMOCD

submitted in lieu of Form 3160-5

UNITED STATES
DEPARTMENT OF THE INTERIOR
BUREAU OF LAND MANAGEMENT

Sundry Notices and Reports on Wells

1. Type of Well
GAS

2. Name of Operator

**BURLINGTON
RESOURCES**

OIL & GAS COMPANY

3. Address & Phone No. of Operator

PO Box 4289, Farmington, NM 87499 (505) 326-9700

4. Location of Well, Footage, Sec., T, R, M

1330'FSL, 1800'FWL, Sec.34, T-27-N, R-11-W, NMPM

5. Lease Number

SF-078092

6. If Indian, All. or
Tribe Name

7. Unit Agreement Name

8. Well Name & Number

Douthit C Federal #100

9. API Well No.

30-045-30184

10. Field and Pool

Basin Fruitland Coal

11. County and State

San Juan Co, NM

12. CHECK APPROPRIATE BOX TO INDICATE NATURE OF NOTICE, REPORT, OTHER DATA

Type of Submission

☒ Notice of Intent

☐ Subsequent Report

☐ Final Abandonment

Type of Action

☐ Abandonment

☐ Recompletion

☐ Plugging Back

☐ Casing Repair

☐ Altering Casing

☒ Other -

☒ Change of Plans

☐ New Construction

☐ Non-Routine Fracturing

☐ Water Shut off

☐ Conversion to Injection

13. Describe Proposed or Completed Operations

The location of the subject well has been changed from 1805'FSL 1585'FEL to 1330'FSL 1800'FWL. Attached is the plat, cut & fill diagram, and topo map showing the revised location.

14. I hereby certify that the foregoing is true and correct.

Signed Regan Cole Title Regulatory Supervisor Date 7/12/00

TLW

(This space for Federal or State Office use)

APPROVED BY /s/ Jim Lovato

Title

Date

JAN 19 2001

CONDITION OF APPROVAL, if any:

Title 18 U.S.C. Section 1001, makes it a crime for any person knowingly and willfully to make to any department or agency of the United States any false, fictitious or fraudulent statements or representations as to any matter within its jurisdiction.

NMOCB

District I
PO Box 1980, Hobbs, NM 88241-1980

District II
PO Drawer 00, Artesia, NM 88211-0719

District III
1000 Rio Brazos Rd., Aztec, NM 87410

District IV
PO Box 2088, Santa Fe, NM 87504-2088

State of New Mexico
Energy, Minerals & Natural Resources Department

OIL CONSERVATION DIVISION
PO Box 2088
Santa Fe, NM 87504-2088

Form C-102
Revised February 21, 1994
Instructions on back
Submit to Appropriate District Office
State Lease - 4 Copies
Fee Lease - 3 Copies

☐ AMENDED REPORT

WELL LOCATION AND ACREAGE DEDICATION PLAT

*API Number 30-045-30184		*Pool Code 71629	*Pool Name Basin Fruitland Coal
*Property Code 6960	*Property Name DOUTHIT C FEDERAL		*Well Number 100
*GRID No. 14538	*Operator Name BURLINGTON RESOURCES OIL & GAS COMPANY		*Elevation 6342'

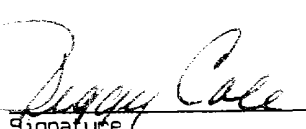
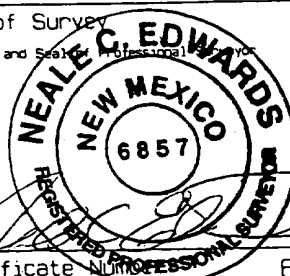
10 Surface Location

UL or lot no.	Section	Township	Range	Lot Idn	Feet from the	North/South line	Feet from the	East/West line	County
K	34	27N	11W		1330	SOUTH	1800	WEST	SAN JUAN

11 Bottom Hole Location If Different From Surface

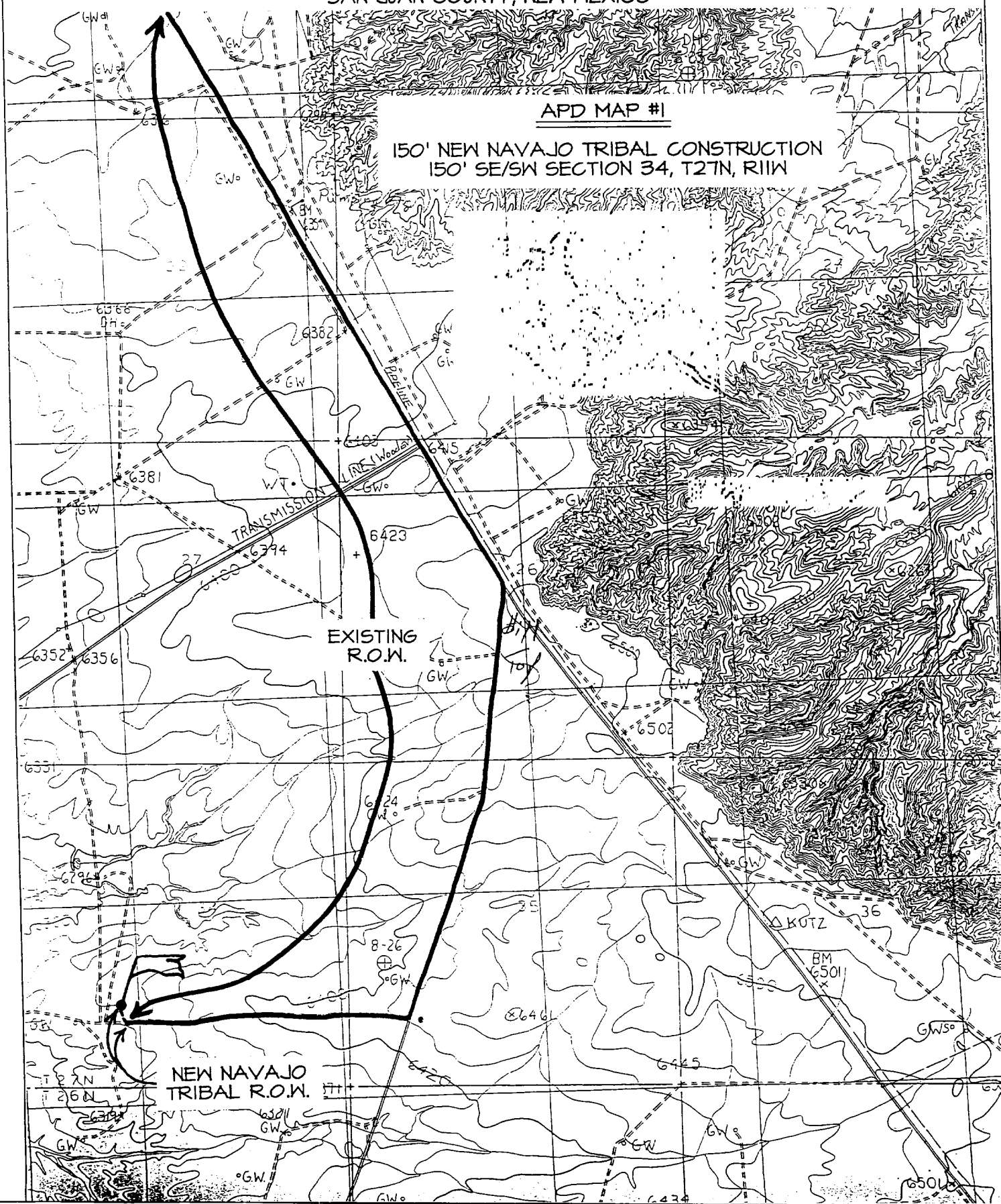
UL or lot no.	Section	Township	Range	Lot Idn	Feet from the	North/South line	Feet from the	East/West line	County
12 Dedicated Acres S/320		13 Joint or Infill		14 Consolidation Code		15 Order No.			

NO ALLOWABLE WILL BE ASSIGNED TO THIS COMPLETION UNTIL ALL INTERESTS HAVE BEEN CONSOLIDATED
OR A NON-STANDARD UNIT HAS BEEN APPROVED BY THE DIVISION

<div>16</div> <div>5278.02'</div> <div>Reissued to show moved location.</div> <div>34</div> <div>SF-078092</div> <div>LAT: 36°31.7'N LONG: 107°59.6'W</div> <div>1800'</div> <div>1330'</div> <div>5280.00'</div>	<div>17 OPERATOR CERTIFICATION</div> <div>I hereby certify that the information contained herein is true and complete to the best of my knowledge and belief.</div> <div></div> <div>Signature Peggy Cole</div> <div>Printed Name Regulatory Supervisor</div> <div>Title</div> <div>Date 4-13-00</div>	
	<div>18 SURVEYOR CERTIFICATION</div> <div>I hereby certify that the well location shown on this plat was plotted from field notes of actual surveys made by me or under my supervision, and that the same is true and correct to the best of my belief.</div> <div>APRIL 25, 2000</div> <div>Date of Survey</div> <div>Signature and Seal of Professional Surveyor</div> <div></div> <div>Certificate Number 6857</div>	

1330' FSL & 1800' FWL, SECTION 34, T27N, R11W, N.M.P.M.
SAN JUAN COUNTY, NEW MEXICO

150' NEW NAVAJO TRIBAL CONSTRUCTION
150' SE/SW SECTION 34, T27N, R11W



OPERATIONS PLAN

Well Name: Douthit C Federal #100
Location: 1805' FSL, 1585' FEL Section 34, T-27-N, R-11-W
Latitude 36° 31.8, Longitude 107° 59.3
San Juan County, NM
Formation: Basin Fruitland Coal
Elevation: 6373' GL

Formation:	Top	Bottom	Contents
Surface	San Jose	813'	
Ojo Alamo	813'	953'	aquifer
Kirtland	953'	1373'	
Fruitland	1373'	1873'	gas
Fruitland Coal	1873'	1883'	gas
Pictured Cliffs	1883'	1923'	gas
Total Depth	1923'		

Logging Program: Platform express TD-surface.

Coring Program: none

Mud Program:

<u>Interval</u>	<u>Type</u>	<u>Weight</u>	<u>Vis.</u>	<u>Fluid Loss</u>
0- 120'	Spud	8.4-9.0	40-50	no control
120-1373'	Non-dispersed	8.4-9.0	30-60	no control
1373-1923'	Air			

Casing Program (as listed, the equivalent, or better):

<u>Hole Size</u>	<u>Depth Interval</u>	<u>Csq. Size</u>	<u>Wt.</u>	<u>Grade</u>
12 1/4"	0' - 120'	9 5/8"	32.3#	H-40
8 3/4"	120' - 1373'	7"	20.0#	K-55
6 1/4"	1273' - 1923'	5 1/2"	15.5#	K-55

Tubing Program:

0' - 1923'	2 3/8"	4.7#	J-55
------------	--------	------	------

Float Equipment: 9 5/8" surface casing - saw tooth guide shoe. Centralizers will be run in accordance with Onshore Order #2.

7" intermediate casing - guide shoe and self-fill float collar. Three centralizers run every fourth joint above shoe. Two turbolizing type centralizers - one below and one into the base of the Ojo Alamo @ 953'. Standard centralizers thereafter every fourth joint up to the base of the surface pipe.

5 1/2" production casing - Pre-drilled liner run to the 7" casing with an overlap. Liner hanger is a slip grip type.

Wellhead Equipment: 9 5/8" x 7" x 2 3/8" x 11" 3000 psi xmas tree assembly.

Cementing:

9 5/8" surface casing - cement with 96 sx Class "B" cement with 1/4# flocele/sx and 3% calcium chloride (112 cu.ft. of slurry, 200% excess to circulate to surface). WOC 8 hrs. Test casing to 600 psi/30 minutes.

7" intermediate casing - lead w/289 sacks Class "B" with 3% sodium metasilicate, 5 pps gilsonite, and 1/2#/sack flocele. Tail with 90 sacks 50/50 Class "B" Pozmix with 2% gel, 2% calcium chloride, 1/2#/sack flocele and 5 pps gilsonite (413 cu.ft., 100% excess to circulate to surface).

5 1/2" liner - uncemented.

BOP and tests:

Surface to intermediate TD - 11" 2000 psi (minimum) double gate BOP stack (Reference Figure #1). Prior to drilling out surface casing, test rams to 600#/30 min.

Intermediate TD to Total Depth - 7 1/6" 3000 psi (minimum) double gate BOP stack (Reference Figure #2). Prior to drilling out intermediate casing, test blind rams and casing to 2500 psi for 30 minutes; all pipe rams and casing to 2500 psi for 30 minutes each.

From surface to TD - choke manifold (Reference Figure #3).

Pipe rams will be actuated at least once each day and blind rams actuated once each trip to test proper functioning. An upper kelly cock valve with handle and drill string safety valves to fit each drill string will be maintained and available on the rig floor.

Additional information:

- * The Fruitland Coal formation will be completed.
- * Anticipated pore pressure for the Fruitland is 1000 psi.
- * This gas is dedicated.
- * The south half of section 34 is dedicated to the Fruitland Coal.

Date: 3/7/2000

Drilling Engineer: Steve Capwell