

UNITED STATES
DEPARTMENT OF THE INTERIOR
BUREAU OF LAND MANAGEMENT

APPLICATION FOR PERMIT TO DRILL, DEEPEN, OR PLUG BACK

1a. Type of Work
DRILL ✓

1b. Type of Well
GAS ✓

2. Operator
**BURLINGTON
RESOURCES** Oil & Gas Company

3. Address & Phone No. of Operator
PO Box 4289, Farmington, NM 87499

(505) 326-9700

4. Location of Well
1980' FNL, 1310' FWL

Latitude 36° 36.3, Longitude 107° 48.8

5. Lease Number
SF-077874
Unit Reporting Number

6. If Indian, All. or Tribe

7. Unit Agreement Name

8. Farm or Lease Name
Hanks

9. Well Number
#19R

10. Field, Pool, Wildcat
Blanco Pict'd Cliffs South

11. Sec., Twn, Rge, Mer. (NMPM)
E Sec. 5, T-27-N, R-9-W
API # 30-045-30199

14. Distance in Miles from Nearest Town
7 mi from Blanco

12. County
San Juan

13. State
NM

15. Distance from Proposed Location to Nearest Property or Lease Line
1310'

16. Acres in Lease
This action is subject to technical and
procedural review pursuant to 43 CFR 3165.3
and appeal pursuant to 43 CFR 3165.4.

17. Acres Assigned to Well
174.48 NW/4

18. Distance from Proposed Location to Nearest Well, Drig, Compl, or Applied for on this Lease
400'

19. Proposed Depth
3120' ✓

20. Rotary or Cable Tools
Rotary

21. Elevations (DF, FT, GR, Etc.)
6906' ✓

22. Approx. Date Work will Start

23. Proposed Casing and Cementing Program
See Operations Plan attached

DRILLING OPERATIONS AUTHORIZED ARE
SUBJECT TO COMPLIANCE WITH ATTACHED
"GENERAL REQUIREMENTS"

24. Authorized by: *Randy Cale*
Regulatory/Compliance Administrator

2-8-00
Date

PERMIT NO. _____

APPROVAL DATE _____

APPROVED BY /s/ Jim Lovato

TITLE _____

DATE JUL 12 2000

Archaeological Report to be submitted

Threatened and Endangered Species Report to be submitted

NOTE: This format is issued in lieu of U.S. BLM Form 3160-3

Title 18 U.S.C. Section 1001, makes it a crime for any person knowingly and willfully to make to any department or agency of the United States any false, fictitious or fraudulent statements or presentations as to any matter within its jurisdiction.

BMOC

District I
PO Box 1980, Hobbs, NM 88241-1980

State of New Mexico
Energy, Minerals & Natural Resources Department

Form C-102
Revised February 21, 1994
Instructions on back
Submit to Appropriate District Office
State Lease - 4 Copies
Fee Lease - 3 Copies

District II
PO Drawer DD, Artesia, NM 88211-0719

OIL CONSERVATION DIVISION

PO Box 2088

Santa Fe, NM 87504-2088

District III
1000 Rio Brazos Rd., Aztec, NM 87410

District IV
PO Box 2088, Santa Fe, NM 87504-2088

☐ AMENDED REPORT

WELL LOCATION AND ACREAGE DEDICATION PLAT

*API Number 30-045-30199		*Pool Code 72439	*Pool Name Blanco Pictured Cliffs South
*Property Code 2082	*Property Name HANKS		*Well Number 19R
*GRID No. 14538	*Operator Name BURLINGTON RESOURCES OIL & GAS COMPANY		*Elevation 6906

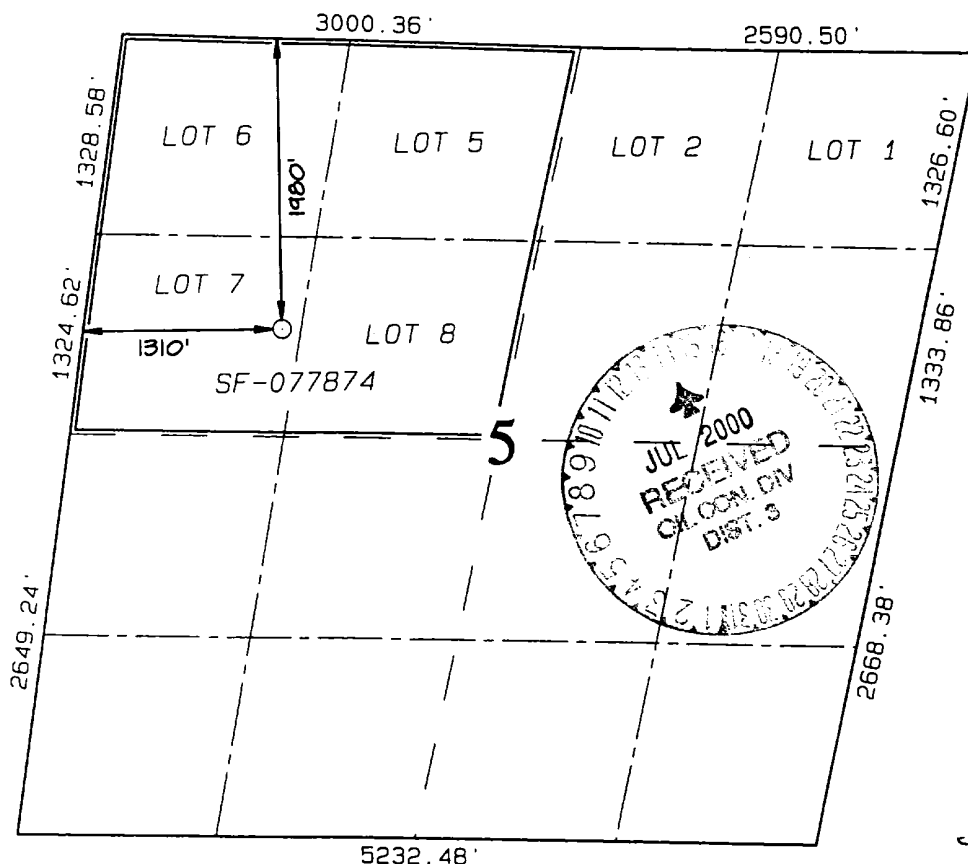
10 Surface Location

UL or lot no.	Section	Township	Range	Lot Idn	Feet from the	North/South line	Feet from the	East/West line	County
E	5	27N	9W		1980	NORTH	1310	WEST	SAN JUAN

11 Bottom Hole Location If Different From Surface

UL or lot no.	Section	Township	Range	Lot Idn	Feet from the	North/South line	Feet from the	East/West line	County
12 Dedicated Acres NW/174.48		13 Joint or Infill		14 Consolidation Code		15 Order No.			

NO ALLOWABLE WILL BE ASSIGNED TO THIS COMPLETION UNTIL ALL INTERESTS HAVE BEEN CONSOLIDATED OR A NON-STANDARD UNIT HAS BEEN APPROVED BY THE DIVISION



17 OPERATOR CERTIFICATION

I hereby certify that the information contained herein is true and complete to the best of my knowledge and belief

Peggy Cole
Signature
Peggy Cole
Printed Name
Regulatory Administrator
Title
2-8-00
Date

18 SURVEYOR CERTIFICATION

I hereby certify that the well location shown on this plat was plotted from field notes of actual surveys made by me or under my supervision and that the same is true and correct to the best of my belief.

JANUARY 6, 1999

Date of Survey
Signature and Seal of Professional Surveyor

NEALE C. EDWARDS
NEW MEXICO
6857
Certificate Number 6857

OPERATIONS PLAN

Well Name: Hanks #19R
Location: 1980' FNL, 1310' FWL, Section 5, T-27-N, R-9-W
San Juan County, New Mexico
Latitude 36° 36.3, Longitude 107° 48.8
Formation: Blanco Pictured Cliffs South
Elevation: 6906' GL

Formation:	Top	Bottom	Contents
Surface	San Jose	1975'	
Ojo Alamo	1975'	2100'	aquifer
Kirtland	2100'	2474'	gas
Fruitland	2474'	2920'	gas
Pictured Cliffs	2920'		gas
Total Depth	3120'		

Logging Program: cased hole - CCL-GR TD to surface

Coring Program: None

Mud Program:

<u>Interval</u>	<u>Type</u>	<u>Weight</u>	<u>Vis.</u>	<u>Fluid Loss</u>
0- 200'	Spud	8.4-9.0	40-50	no control
200-3120'	FW	8.4-9.0	32-45	no control

Casing Program (as listed, equivalent, or better):

<u>Hole Size</u>	<u>Depth Interval</u>	<u>Csg. Size</u>	<u>Wt.</u>	<u>Grade</u>
7 7/8"	0 - 200'	5 1/2"	15.5#	J-55
4 3/4"	0 - 3120' —	2 7/8"	6.4#	J-55

Float Equipment: 5 1/2" surface casing - saw tooth guide shoe.
Centralizers will be run in accordance with Onshore Order #2.

2 7/8" production casing - float shoe on bottom. Three centralizers run every other joint above shoe. Seven centralizers run every 3rd joint to the base of the Ojo Alamo @ 2100'. Two turbolizing type centralizers - one below and one into the base of the Ojo Alamo @ 2100'. Standard centralizers thereafter every fourth joint up to the base of the surface pipe.

Wellhead Equipment: 7 7/8" x 2 7/8" 2000 psi screw on independent wellhead.

Cementing:

5 1/2" surface casing - cement with 88 sx Class "B" cement with 1/4# flocele/sx and 3% calcium chloride (104 cu.ft. of slurry, 200% excess to circulate to surface). WOC 8 hrs. Test casing to 600 psi for 30 minutes.

2 7/8" production casing - Lead w/145 sx Class "B" w/3% sodium metasilicate, 1/4 pps cellophane and 10 pps gilsonite. Tail w/50 sx 50/50 Class "B" Poz w/2% gel, 1/4 pps cellophane, 10 pps gilsonite and 2% calcium chloride (487 cu.ft. of slurry, 100% excess to circulate to surface). WOC 8 hrs. If cement does not circulate to surface, a CBL will be run during completion to determine TOC.

BOP and tests:

Surface to TD - 11" 2000 psi (minimum double gate BOP stack (Reference Figure #1 and #2). Prior to drilling out surface casing, test rams to 600 psi/30 min.

Completion - 6" 2000 psi (minimum) double gate BOP stack (Reference Figure #2). Prior to completion operations, test rams and casing to 2000 psi/15 min.

From surface to TD - choke manifold (Reference Figure #3).

Pipe rams will be actuated to least once each day and blind rams actuated once each trip to test proper functioning. An upper kelly cock valve with handle and drill string safety valves to fit each drill string will be maintained and available on the rig floor.

Additional information:

- * The Pictured Cliffs formation will be completed.
- * Anticipated pore pressure for the Pictured Cliffs is 600 psi.
- * This gas is dedicated.
- * The northwest quarter of section 5 is dedicated to the Pictured Cliffs.

Steve Campbell
Drilling Engineer

2/9/2000
Date

BURLINGTON RESOURCES OIL & GAS COMPANY HANKS #19R

1980' FNL & 1310' FWL, SECTION 5, T27N, R9W, N.M.P.M.
SAN JUAN COUNTY, NEW MEXICO

APD MAP #1

400' NEW BLM CONSTRUCTION
SE/NW SECTION 5, T27N, R9W

