

UNITED STATES
DEPARTMENT OF THE INTERIOR
BUREAU OF LAND MANAGEMENT

APPLICATION FOR PERMIT TO DRILL, DEEPEN, OR PLUG BACK

1a. Type of Work
DRILL

1b. Type of Well
GAS

2. Operator
BURLINGTON RESOURCES Oil & Gas Company

3. Address & Phone No. of Operator
PO Box 4289, Farmington, NM 87499
(505) 326-9700

4. Location of Well
1610' FSL, 1775' FEL
Latitude 36° 34.3, Longitude 107° 50.7

5. Lease Number
NM-027
Unit Reporting Number

6. If Indian, All. or Tribe

7. Unit Agreement Name

8. Farm or Lease Name
Knauff

9. Well Number
#2R

10. Field, Pool, Wildcat
Fulcher Kutz Pict'd Cliffs

11. Sec., Twn, Rge, Mer. (NMPM)
Sec. 13, T-27-N, R-10-W
API # 30-045-30211

12. County
San Juan

13. State
NM

14. Distance in Miles from Nearest Town
12 mi from Bloomfield

15. Distance from Proposed Location to Nearest Property or Lease Line
1610'

16. Acres in Lease

17. Acres Assigned to Well
152.72 SE/4

18. Distance from Proposed Location to Nearest Well, Drlg, Compl, or Applied for on this Lease
50'

19. Proposed Depth
2274'

20. Rotary or Cable Tools
Rotary

21. Elevations (DF, FT, GR, Etc.)
6183' GL

22. Approx. Date Work will Start
3-23-00

23. Proposed Casing and Cementing Program
See Operations Plan attached

24. Authorized by: Jerry Cole
Regulatory/Compliance Administrator

PERMIT NO. _____

APPROVAL DATE _____

APPROVED BY /s/ Jim Lovato

TITLE _____

DATE JUN 1 2000

Archaeological Report to be submitted

Threatened and Endangered Species Report to be submitted

NOTE: This format is issued in lieu of U.S. BLM Form 3160-3

Title 18 U.S.C. Section 1001, makes it a crime for any person knowingly and willfully to make to any department or agency of the United States any false, fictitious or fraudulent statements or presentations as to any matter within its jurisdiction.

[Handwritten signature]

[Stamp]

[Handwritten signature]

District I
PO Box 1980, Hobbs, NM 86241-1980

State of New Mexico
Energy, Minerals & Natural Resources Department

Form C-102
Revised February 21, 1994

District II
PO Drawer DD, Artesia, NM 86211-0719

OIL CONSERVATION DIVISION
PO Box 2088
Santa Fe, NM 87504-2088

Submit to Appropriate District Office
State Lease - 4 Copies
Free Lease - 3 Copies

District III
1000 Rio Brazos Rd., Aztec, NM 87410

District IV
PO Box 2088, Santa Fe, NM 87504-2088

AMENDED REPORT

WELL LOCATION AND ACREAGE DEDICATION PLAT

*API Number 30-045-30211		*Pool Code 77200	*Pool Name Fulcher Kutz Pictured Cliffs
*Property Code 7230	*Property Name KNAUFF		*Well Number 2R
*OGRID No. 14538	*Operator Name BURLINGTON RESOURCES OIL & GAS COMPANY		*Elevation 6183 ✓

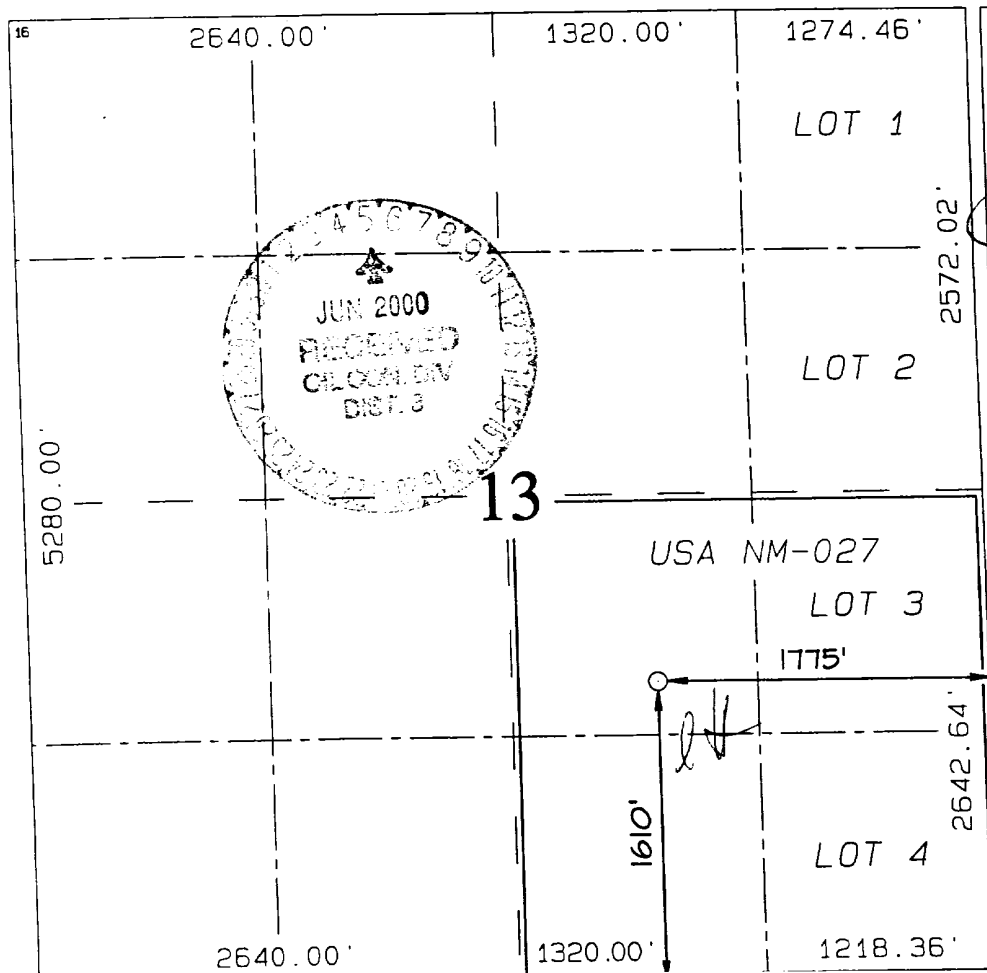
¹⁰ Surface Location

UL or lot no.	Section	Township	Range	Lot 10n	Feet from the	North/South line	Feet from the	East/West line	County
J	13	27N	10W		1610	SOUTH	1775	EAST	SAN JUAN

¹¹ Bottom Hole Location If Different From Surface

UL or lot no.	Section	Township	Range	Lot 10n	Feet from the	North/South line	Feet from the	East/West line	County
¹² Dedicated Acres SE/152.72		¹³ Joint or Infill		¹⁴ Consolidation Code		¹⁵ Order No.			

NO ALLOWABLE WILL BE ASSIGNED TO THIS COMPLETION UNTIL ALL INTERESTS HAVE BEEN CONSOLIDATED
OR A NON-STANDARD UNIT HAS BEEN APPROVED BY THE DIVISION



¹⁷ OPERATOR CERTIFICATION

I hereby certify that the information contained herein is true and complete to the best of my knowledge and belief.

Signature

Peggy Cole

Printed Name

Regulatory Administrator

Title

3-23-00

Date

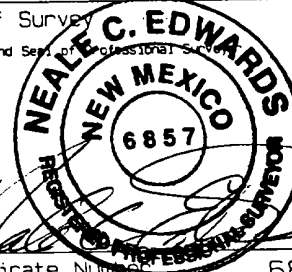
¹⁸ SURVEYOR CERTIFICATION

I hereby certify that the well location shown on this plat was plotted from field notes of actual surveys made by me or under my supervision, and that the same is true and correct to the best of my belief.

JANUARY 24, 2000

Date of Survey

Signature and Seal of Professional Surveyor



Certificate Number

6857

OPERATIONS PLAN

Well Name: Knauff #2R
Location: 1610' FSL, 1775' FEL, Section 13, T-27-N, R-10-W
San Juan County, New Mexico
Latitude 36° 34.3, Longitude 107° 50.7
Formation: Fulcher Kutz Pictured Cliffs
Elevation: 6183' GL

Formation:	Top	Bottom	Contents
Surface	San Jose	1133'	
Ojo Alamo	1133'	1282'	aquifer
Kirtland	1282'	1644'	gas
Fruitland	1644'	2074'	gas
Pictured Cliffs	2074'		gas
Total Depth	2274'		

Logging Program: cased hole - CCL-GR TD to surface

Coring Program: None

Mud Program:

<u>Interval</u>	<u>Type</u>	<u>Weight</u>	<u>Vis.</u>	<u>Fluid Loss</u>
0- 120'	Spud	8.4-9.0	40-50	no control
120-2274'	FW	8.4-9.0	32-45	no control

Casing Program (as listed, equivalent, or better):

<u>Hole Size</u>	<u>Depth Interval</u>	<u>Csq.Size</u>	<u>Wt.</u>	<u>Grade</u>
7 7/8"	0 - 120' ✓	5 1/2"	15.5#	J-55
4 3/4"	0 - 2274' ✓	2 7/8"	6.4#	J-55

Float Equipment: 5 1/2" surface casing - saw tooth guide shoe.
Centralizers will be run in accordance with Onshore Order #2.

2 7/8" production casing - float shoe on bottom. Three centralizers run every other joint above shoe. Seven centralizers run every 3rd joint to the base of the Ojo Alamo @ 1282'. Two turbolizing type centralizers - one below and one into the base of the Ojo Alamo @ 1282'. Standard centralizers thereafter every fourth joint up to the base of the surface pipe.

Wellhead Equipment: 7 7/8" x 2 7/8" 2000 psi screw on independent wellhead.

Cementing:

5 1/2" surface casing - cement with 53 sx Class "B" cement with 1/4# flocele/sx and 3% calcium chloride (63 cu.ft. of slurry, 200% excess to circulate to surface). WOC 8 hrs. Test casing to 600 psi for 30 minutes.

2 7/8" production casing - Lead w/99 sx Class "B" w/3% sodium metasilicate, 1/4 pps cellophane and 5 pps gilsonite. Tail w/50 sx 50/50 Class "B" Poz w/2% gel, 1/4 pps cellophane, 5 pps gilsonite and 2% calcium chloride (355 cu.ft. of slurry, 100% excess to circulate to surface). WOC 8 hrs. If cement does not circulate to surface, a CBL will be run during completion to determine TOC.

BOP and tests:

Surface to TD - 11" 2000 psi (minimum double gate BOP stack (Reference Figure #1 and #2). Prior to drilling out surface casing, test rams to 600 psi/30 min.

Completion - 6" 2000 psi (minimum) double gate BOP stack (Reference Figure #2). Prior to completion operations, test rams and casing to 2000 psi/15 min.

From surface to TD - choke manifold (Reference Figure #3).

Pipe rams will be actuated to least once each day and blind rams actuated once each trip to test proper functioning. An upper kelly cock valve with handle and drill string safety valves to fit each drill string will be maintained and available on the rig floor.

Additional information:

- * The Pictured Cliffs formation will be completed.
- * Anticipated pore pressure for the Pictured Cliffs is 600 psi.
- * This gas is dedicated.
- * The southeast quarter of section 13 is dedicated to the Pictured Cliffs.

Steve Campbell
Drilling Engineer

4/3/2000
Date

BURLINGTON RESOURCES OIL & GAS COMPANY KNAUFF #2R

1610' FSL & 1775' FEL, SECTION 13, T27N, R10W, N.M.P.M.
SAN JUAN COUNTY, NEW MEXICO

APD MAP #1

NO NEW CONSTRUCTION
NWSE SECTION 13, T27N, R10W

