

UNITED STATES
DEPARTMENT OF THE INTERIOR
BUREAU OF LAND MANAGEMENT

APPLICATION FOR PERMIT TO DRILL, DEEPEN, OR PLUG BACK

1a. Type of Work
DRILL

1b. Type of Well
GAS

2. Operator
BURLINGTON RESOURCES Oil & Gas Company

3. Address & Phone No. of Operator
PO Box 4289, Farmington, NM 87499
(505) 326-9700

4. Location of Well
795' FNL, 1150' FWL
Latitude 36° 33.1', Longitude 107° 44.5'

14. Distance in Miles from Nearest Town
10 miles from Huerfano Trading Post

15. Distance from Proposed Location to Nearest Property or Lease Line
795'

16. Acres in Lease

5. Lease Number
I-149-IND-84
Unit Reporting Number

6. If Indian, All. or Tribe
Navajo

7. Unit Agreement Name
Huerfanito Unit

8. Farm or Lease Name
Huerfanito Unit

9. Well Number
#93R

10. Field, Pool, Wildcat
Blanco Pict'd Cliffs South

11. Sec., Twn, Rge, Mer. (NMPM)
0 Sec. 25, T-27-N, R-9-W
API # 30-045-30510

12. County
San Juan

13. State
NM

18. Distance from Proposed Location to Nearest Well, Drig, Compl, or Applied for on this Lease
250'

19. Proposed Depth
2251'

20. Rotary or Cable Tools
Rotary

21. Elevations (DF, FT, GR, Etc.)
6105' GR

22. Approx. Date Work will Start

23. Proposed Casing and Cementing Program
See Operations Plan attached

DRILLING OPERATIONS AUTHORIZED ARE
SUBJECT TO COMPLIANCE WITH ATTACHED
"GENERAL REQUIREMENTS"

24. Authorized by: [Signature]
Regulatory/Compliance Supervisor

Date

12-29-00

PERMIT NO. _____

APPROVAL DATE _____

APPROVED BY /s/ Jim Lovato

TITLE _____

DATE JUL 31

Archaeological Report to be submitted

Threatened and Endangered Species Report to be submitted

NOTE: This format is issued in lieu of U.S. BLM Form 3160-3

Title 18 U.S.C. Section 1001, makes it a crime for any person knowingly and willfully to make to any department or agency of the United States any false, fictitious or fraudulent statements or presentations as to any matter within its jurisdiction.

NMOCD

K

District I
PO Box 1980, Hobbs, NM 88241-1980

District II
PO Drawer DD, Artesia, NM 88211-0719

District III
1000 Rio Brazos Rd., Aztec, NM 87410

District IV
PO Box 2088, Santa Fe, NM 87504-2088

State of New Mexico
Energy, Minerals & Natural Resources Department

OIL CONSERVATION DIVISION
PO Box 2088
Santa Fe, NM 87504-2088

Form C-102
Revised February 21, 1994
Instructions on back
Submit to Appropriate District Office
State Lease - 4 Copies
Fee Lease - 3 Copies

☐ AMENDED REPORT

WELL LOCATION AND ACREAGE DEDICATION PLAT

API Number 30-045- 30510		Pool Code 72439	Pool Name Blanco Pictured Cliffs South
Property Code 7138	Property Name HUERFANITO UNIT		Well Number 93R
GRID No. 14538	Operator Name BURLINGTON RESOURCES OIL & GAS COMPANY		Elevation 6105'

10 Surface Location

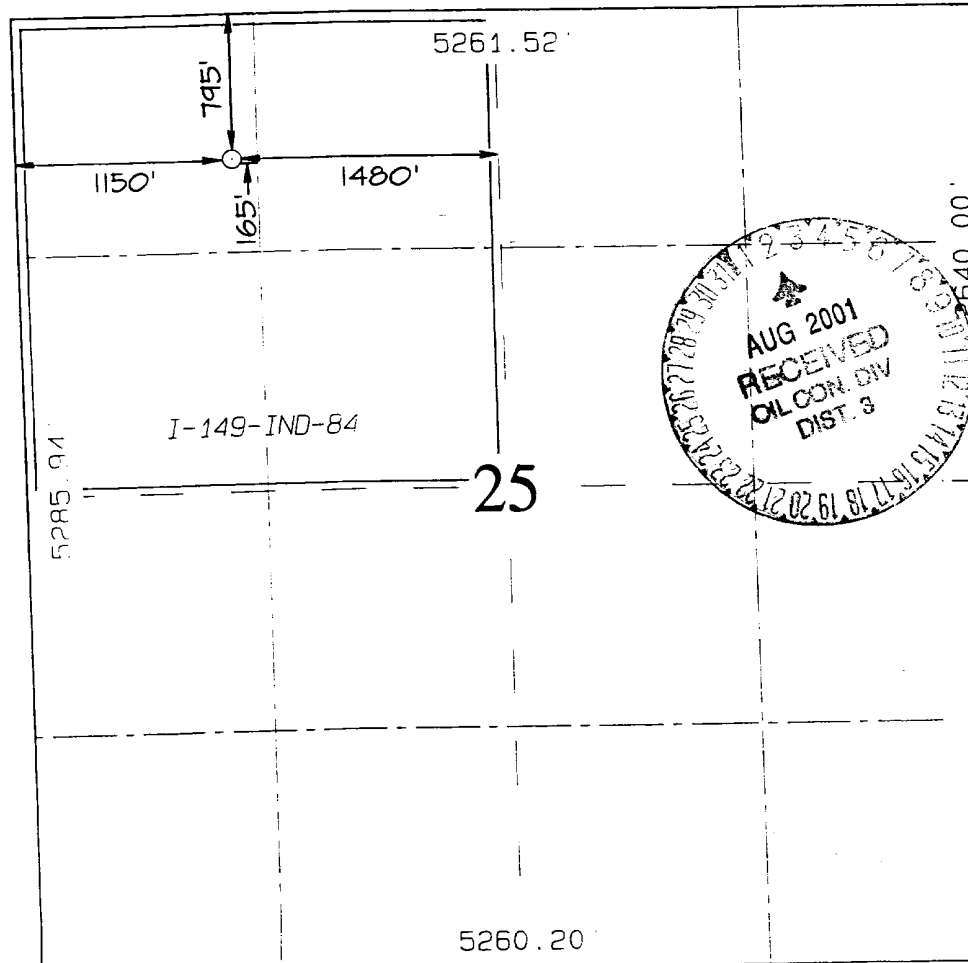
UL or lot no.	Section	Township	Range	Lot 101	Feet from the	North/South line	Feet from the	East/West line	County
C	25	27N	9W		795	NORTH	1150	WEST	SAN JUAN

11 Bottom Hole Location If Different From Surface

UL or lot no.	Section	Township	Range	Lot 101	Feet from the	North/South line	Feet from the	East/West line	County

Dedicated Acres NW/160	Joint or Infill	Consolidation Code	Order No.
---------------------------	-----------------	--------------------	-----------

NO ALLOWABLE WILL BE ASSIGNED TO THIS COMPLETION UNTIL ALL INTERESTS HAVE BEEN CONSOLIDATED
OR A NON-STANDARD UNIT HAS BEEN APPROVED BY THE DIVISION



17 OPERATOR CERTIFICATION

I hereby certify that the information contained herein is true and complete to the best of my knowledge and belief

Signature
Peggy Cole
Printed Name
Regulatory Supervisor
Title
12-24-00
Date

18 SURVEYOR CERTIFICATION

I hereby certify that the well location shown on this plat was plotted from field notes of actual surveys made by me or under my supervision, and that the same is true and correct to the best of my belief.

REVISED: DECEMBER 3, 2000
MARCH 30, 1998

Date of Survey
Signature and Seal of Professional Surveyor

NEALE G. EDWARDS
NEW MEXICO
6857
Professional Surveyor
Certificate No. 6857

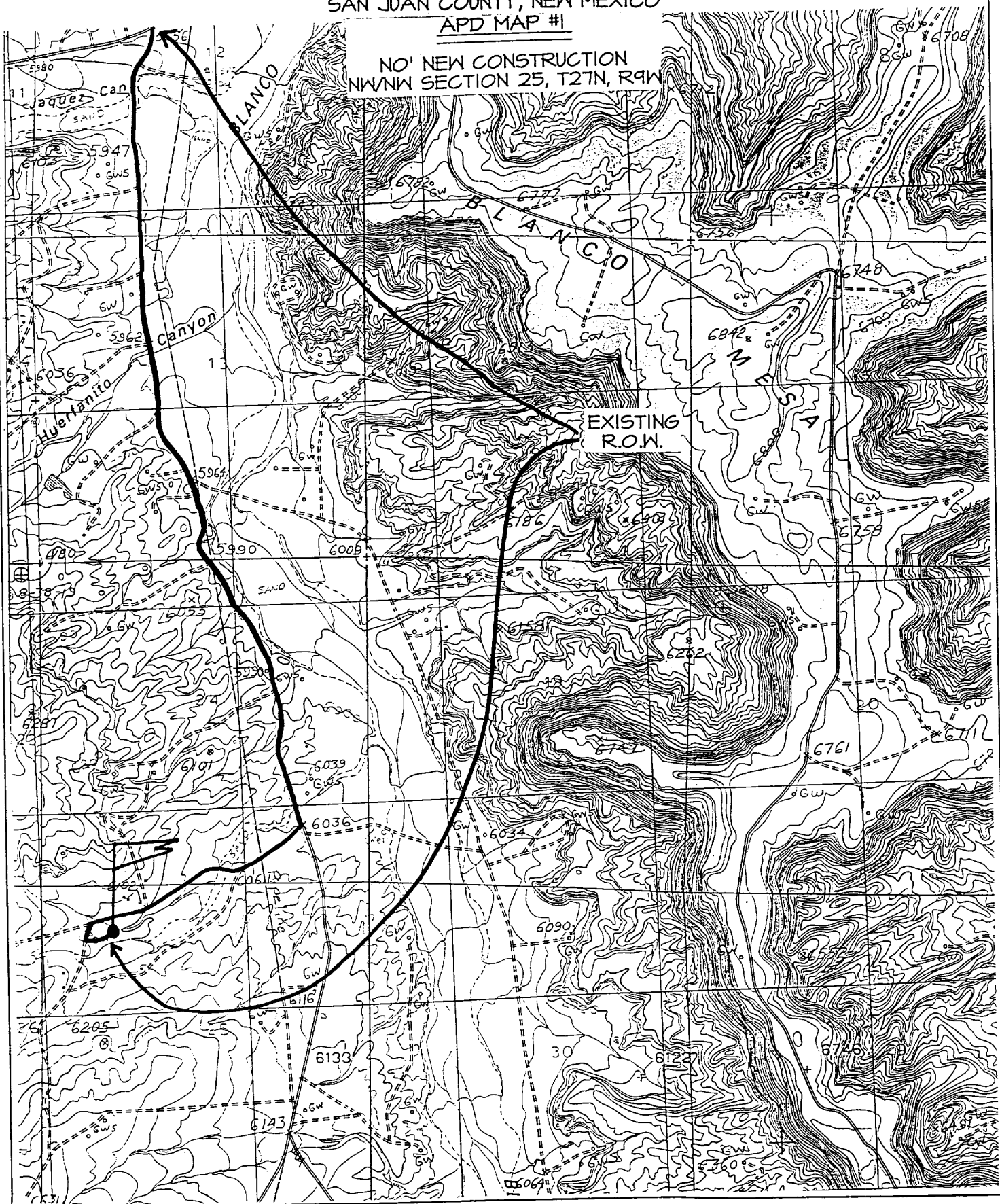
BURLINGTON RESOURCES OIL & GAS COMPANY HUERFANITO UNIT #93R

795' FNL & 1150' FWL, SECTION 25, T27N, R9W, N.M.P.M.
SAN JUAN COUNTY, NEW MEXICO

APD MAP #1

NO' NEW CONSTRUCTION
NWNW SECTION 25, T27N, R9W

EXISTING
R.O.W.



OPERATIONS PLAN

Well Name: Huerfanito Unit #93R
Location: 795' FNL, 1150' FWL, Section 25, T-27-N, R-9-W
San Juan County, New Mexico
Latitude 36° 33.1', Longitude 107° 44.5'
Formation: Blanco Pictured Cliffs South
Elevation: 6105' GR

Formation:	Top	Bottom	Contents
Surface	San Jose	1157'	
Ojo Alamo	1157'	1301'	aquifer
Kirtland	1301'	1665'	gas
Fruitland	1665'	2051'	gas
Pictured Cliffs	2051'		gas
Total Depth	2251'		

Logging Program: cased hole - CBL/GR/CCL TD to surface

Coring Program: None

Mud Program:

Interval	Type	Weight	Vis.	Fluid Loss
0- 120'	Spud	8.4-9.0	40-50	no control
120-2251'	FW	8.4-9.0	32-45	no control

Casing Program (as listed, equivalent, or better):

Hole Size	Depth Interval	Csg. Size	Wt.	Grade
8 3/4"	0 - 120'	7"	20#	J-55
6 1/4"	0 - 2251'	2 7/8"	6.5#	J-55

Float Equipment: 7" surface casing - saw tooth guide shoe.
Centralizers will be run in accordance with Onshore Order #2.

2 7/8" production casing - float shoe on bottom. Three centralizers run every other joint above shoe. Seven centralizers run every 3rd joint to the base of the Ojo Alamo @ 1301'. Two turbolizing type centralizers - one below and one into the base of the Ojo Alamo @ 1301'. Standard centralizers thereafter every fourth joint up to the base of the surface pipe.

Wellhead Equipment: 7" x 2 7/8" 2000 psi screw on independent wellhead.

Cementing:

7" surface casing - cement with 46 sx Class "H" cement with 1/4# flocele/sx and 3% calcium chloride (54 cu.ft. of slurry, 200% excess to circulate to surface). WOC 8 hrs. Test casing to 600 psi for 30 minutes.

2 7/8" production casing - Lead w/249 sx Class "G" TXI lightweight cement w/2.5% sodium metasilicate, 1/2 pps flocele, 10 pps gilsonite, 2% calcium chloride, and 0.2% antifoam agent. Tail w/90 sx 50/50 Class "G" Poz w/2% gel, 2% calcium chloride, 1/4 pps flocele, 5 pps gilsonite, and 0.1% antifoam agent (756 cu.ft. of slurry, 100% excess to circulate to surface).

Note: If open hole logs are run, cement volumes will be based on 25% excess over caliper volumes.

BOP and tests:

Surface to TD - 11" 2000 psi (minimum double gate BOP stack (Reference Figure #1). Prior to drilling out surface casing, test rams to 600 psi/30 min.

Completion - 7 1/16" 2000 psi (minimum) double gate BOP stack (Reference Figure #2). Prior to completion operations, test rams and casing to 2000 psi/15 min.

From surface to TD - choke manifold (Reference Figure #3).

Pipe rams will be actuated to least once each day and blind rams actuated once each trip to test proper functioning. An upper kelly cock valve with handle and drill string safety valves to fit each drill string will be maintained and available on the rig floor.

Additional information:

- * The Pictured Cliffs formation will be completed.
- * Anticipated pore pressure for the Pictured Cliffs is 500 psi.
- * This gas is dedicated.
- * The northwest quarter of Section 25 is dedicated to the Pictured Cliffs.

E. J. Giles

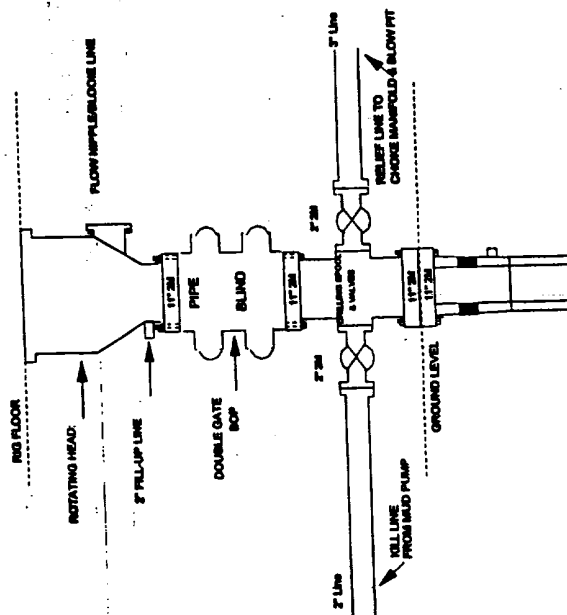
Drilling Engineer

12/29/00

Date

Burlington Resources

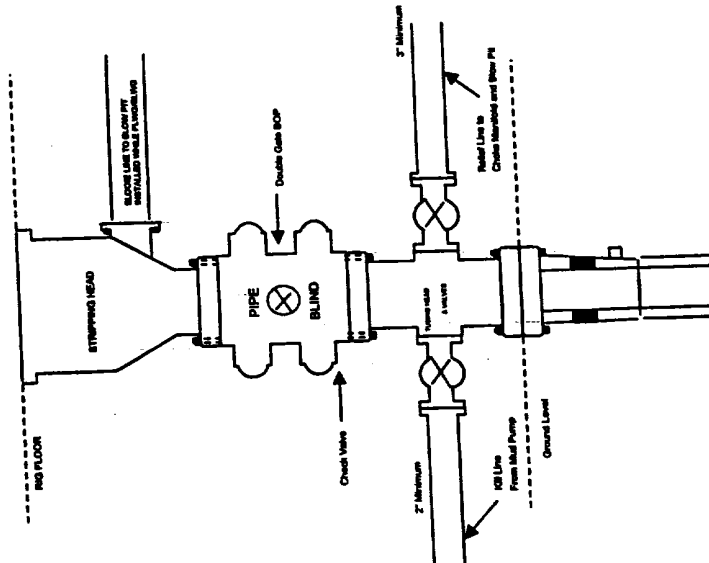
Drilling Rig 2000 psi System



BOP Installation from Surface Casing Point to Total Depth, 11" Bore
10" Nominal, 2000 psi working pressure. Double Gate BOP to be
equipped with blind rams and pipe rams. A stripping head on top of
ram preventers. All BOP equipment is 2,000 psi working pressure
greater.

Figure #1

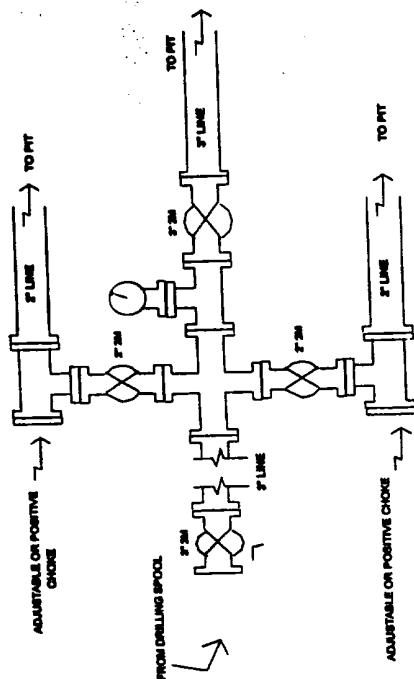
BURLINGTON RESOURCES Completion/Workover Rig BOP Configuration 2,000 psi System



Minimum BOP Installation for all Completion/Workover
Operations. 7-1/16" bore, 2000 psi minimum working
pressure double gate BOP to be equipped with blind and
pipe rams. A stripping head to be installed on the top of
the BOP. All equipment is 2000 psi working pressure or
greater.

Figure #2

Drilling Rig Choke Manifold Configuration 2000 psi System



Choke manifold Installation from Surface Casing
Point to Total Depth, 2,000psi working pressure
equipment with two chokes.

Figure #3