

DISTRICT I
1625 N. French Dr., Hobbs, NM 88240

DISTRICT II
811 South Frist, Artesia, NM 88210

DISTRICT III
1000 Rio Brazos Rd., Aztec, NM 87410

DISTRICT IV
2040 South Pacheco, Santa Fe, NM 87505

State of New Mexico
Energy, Minerals and Natural Resources

OIL CONSERVATION DIVISION

2040 South Pacheco
Santa Fe, NM 87505

Form C-10

Revised March 25, 1999

Instructions on back

Submit to Appropriate District Office

State Lease - 6 Copy

Fee Lease - 5 Copy

☐ AMENDED REPORT

APPLICATION FOR PERMIT TO DRILL, RE-ENTER, DEEPEN, PLUGBACK, OR ADD A ZONE

¹ Operator Name and Address Four Star Oil and Gas Co. 3300 N. Butler Ave, Ste100 Farmington NM 87401				² OGRID Number 131994	
⁴ Property Code 17664		⁵ Property Name BURROUGHS COM B		³ API Number 30-045-30541	
				⁶ Well No. 4B	

⁷ Surface Location									
UI or lot no	Section	Township	Range	Lot.Idn	Feet From The	North/South Line	Feet From The	East/West Line	County
J	2	27N	9W		1510	SOUTH	1880	EAST	SAN JUAN

⁸ Proposed Bottom Hole Location If Different From Surface									
UI or lot no	Section	Township	Range	Lot.Idn	Feet From The	North/South Line	Feet From The	East/West Line	County
⁹ Proposed Pool 1 MESA VERDE					¹⁰ Proposed Pool 2				

¹¹ Work Type Code N	¹² WellType Code G	¹³ Rotary or C.T. R	¹⁴ Lease Type Code S	¹⁵ Ground Level Elevation 6164'
¹⁶ Multiple N	¹⁷ Proposed Depth 4775'	¹⁸ Formation MV	¹⁹ Contractor BEAR CAT	²⁰ Spud Date 7/1/01

²¹ Proposed Casing and Cement Program					
SIZE OF HOLE	SIZE OF CASING	WEIGHT PER FOOT	SETTING DEPTH	SACKS OF CEMENT	EST. TOP
12-1/4"	8-5/8" K-55	24#	350'	260	SURFACE
7-7/8"	4-1/2" K-55	11.6#	4775'	550	SURFACE

²² Describe the proposed program. If this application is to DEEPEN or PLUG BACK give the data on the present productive zone and proposed new productive zone. Describe the blowout prevention program, if any. Use additional sheets if necessary.

Four Star Oil and Gas Company proposes to drill this development well to a depth of 4775'. This well will test the productivity of the MESA VERDE formation. If the well is unproductive, it will be plugged and abandoned as per state requirements.
Bond coverage for this well is provided by Bond NO. K02907914-C4073 nation wide BLM bond & Bond No. K02907914-F4072-Nation wide BIA bond.

A threatened and endangered species survey and archaeological survey were performed as required.

²³ I hereby certify that the rules and regulations of the Oil Conservation Division have been complied with and that the information given above is true and complete to the best of my knowledge and belief.

Signature Arthur D. Archibeque
Printed Name Arthur D. Archibeque
Title Eng. Assistant
Date 1/30/01 Telephone 325-4397

OIL CONSERVATION DIVISION	
Approved By: <u>[Signature]</u>	
Title: <u>DEPUTY OIL & GAS INSPECTOR, DIST. #3</u>	
Approval Date: <u>FEB - 1 2001</u>	Expiration Date: <u>FEB - 1 2002</u>
Conditions of Approval: Attached <u>1</u>	

District I
PO Box 1980, Hobbs, NM 88241-1980

District II
PO Drawer 00, Artesia, NM 88211-0719

District III
1000 Rio Brazos Rd., Aztec, NM 87410

District IV
PO Box 2088, Santa Fe, NM 87504-2088

State of New Mexico
Energy, Minerals & Natural Resources Department

OIL CONSERVATION DIVISION
PO Box 2088
Santa Fe, NM 87504-2088

Form C-102
Revised February 21, 1994
Instructions on back
Submit to Appropriate District Office
State Lease - 4 Copies
Fee Lease - 3 Copies

☐ AMENDED REPORT

WELL LOCATION AND ACREAGE DEDICATION PLAT

*API Number 30-045-30541		*Pool Code 72319	*Pool Name BLANCO MESAVERDE
*Property Code 17664	*Property Name BURROUGHS COM B		*Well Number 4B
*GRID No. 131994	*Operator Name FOUR STAR OIL & GAS COMPANY		*Elevation 6164'

¹⁰ Surface Location

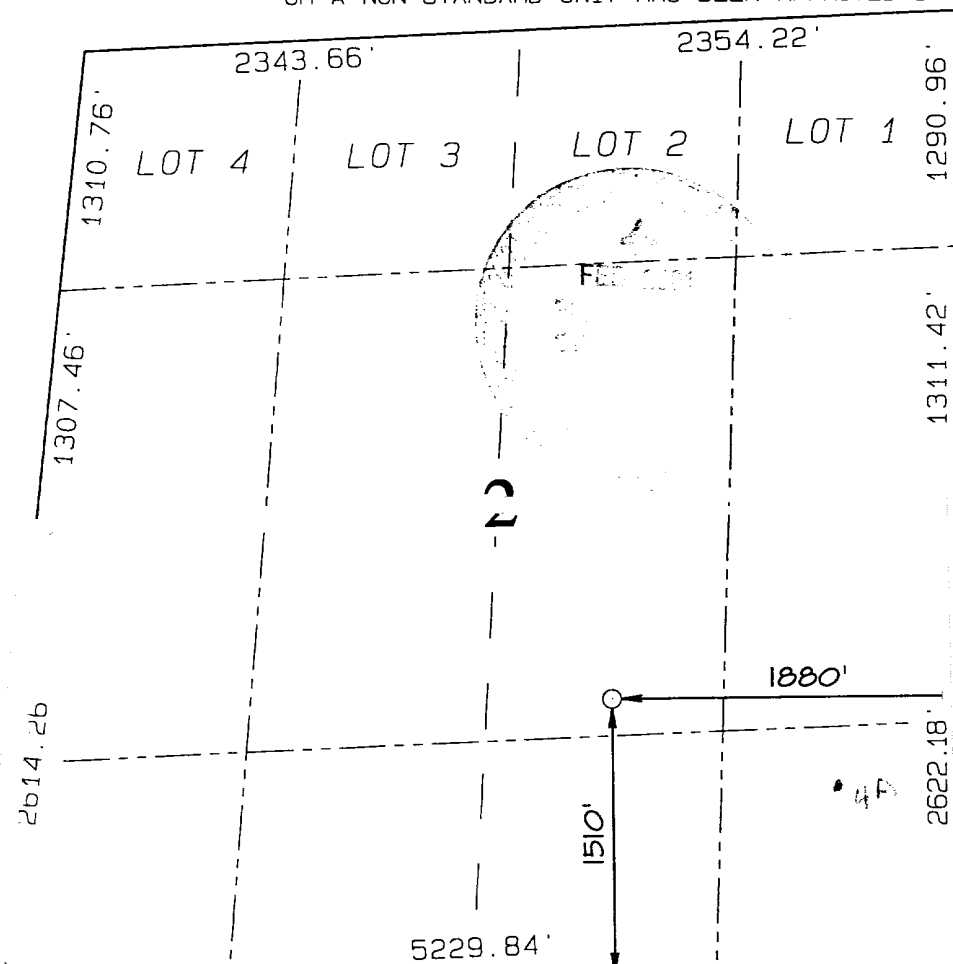
UL or lot no.	Section	Township	Range	Lot Idn	Feet from the	North/South line	Feet from the	East/West line	County
J	2	27N	9W		1510	SOUTH	1880	EAST	SAN JUAN

¹¹ Bottom Hole Location If Different From Surface

UL or lot no.	Section	Township	Range	Lot Idn	Feet from the	North/South line	Feet from the	East/West line	County

¹² Dedicated Acres 320 5/2	¹³ Joint or Infill L	¹⁴ Consolidation Code	¹⁵ Order No.
--	------------------------------------	----------------------------------	-------------------------

NO ALLOWABLE WILL BE ASSIGNED TO THIS COMPLETION UNTIL ALL INTERESTS HAVE BEEN CONSOLIDATED
OR A NON-STANDARD UNIT HAS BEEN APPROVED BY THE DIVISION



¹⁷ OPERATOR CERTIFICATION

I hereby certify that the information contained herein is true and complete to the best of my knowledge and belief

Signature: Arthur D. Archibez
Printed Name: Arthur D. Archibez
Title: Engineer Assistant
Date: 4/27/2000

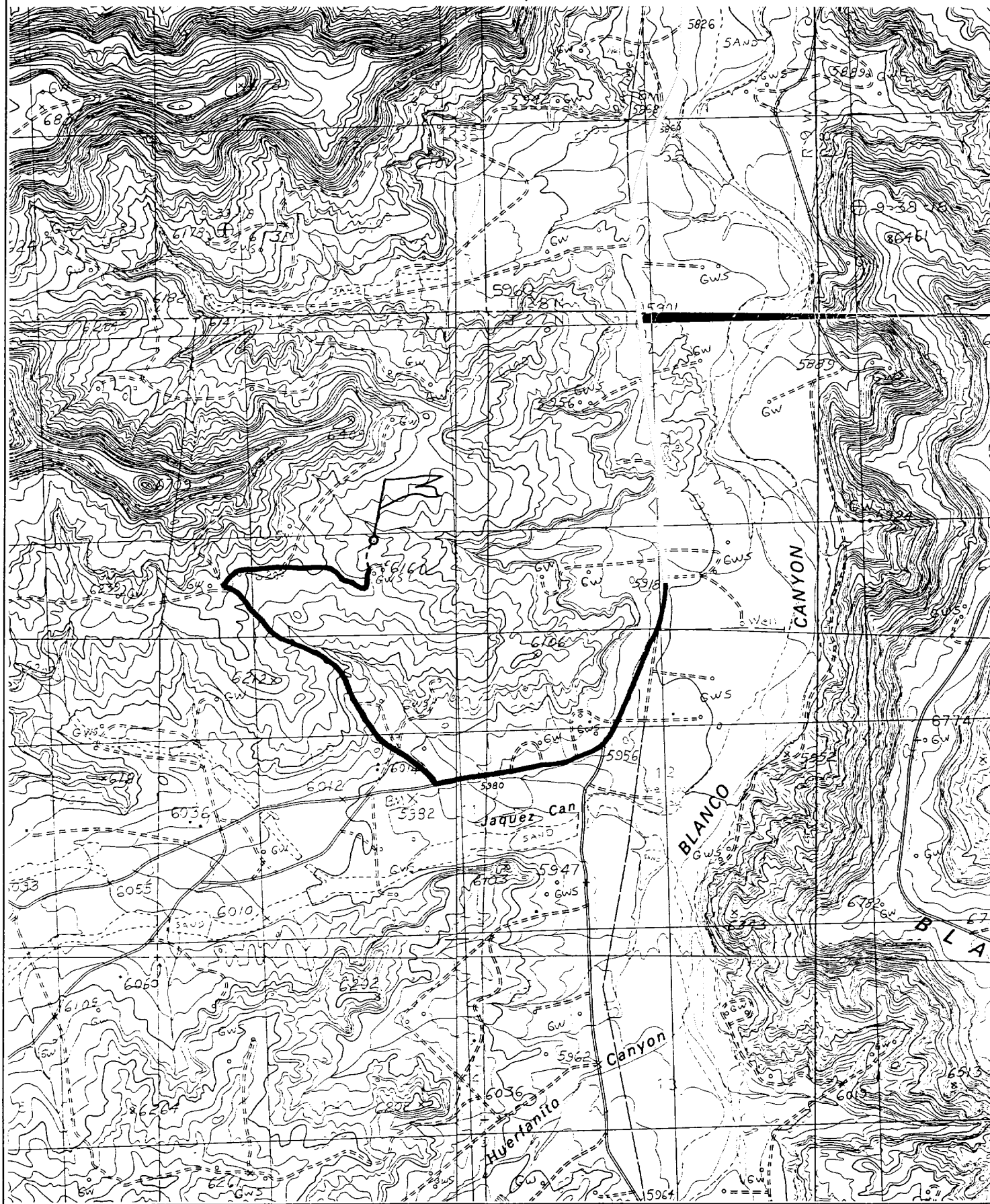
¹⁸ SURVEYOR CERTIFICATION

I hereby certify that the well location shown on this plat was plotted from field notes of actual surveys made by me or under my supervision, and that the same is true and correct to the best of my belief.

NOVEMBER 20, 2000
Date of Survey
Signature and Seal of Professional Surveyor: NEALEC. EDWARDS
Certificate Number: 6857

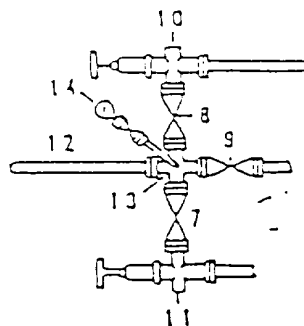
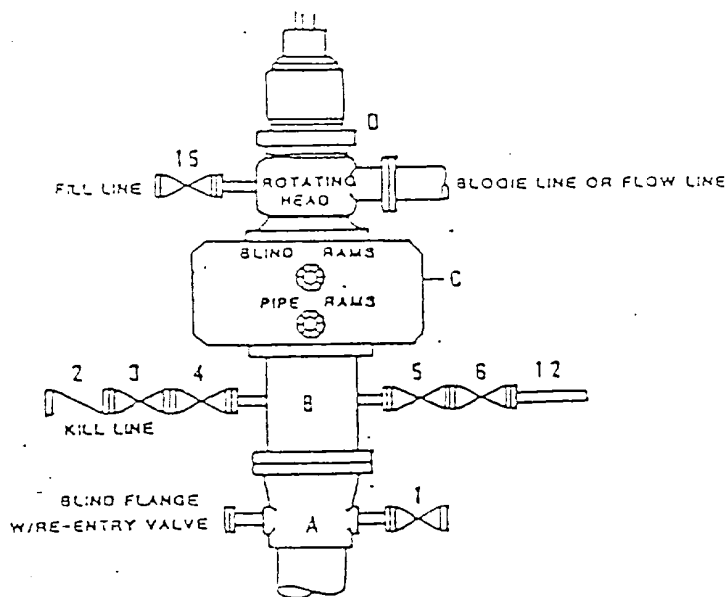
FOUR STAR OIL & GAS COMPANY BURROUGHS COM B #4B

1510' FSL & 1880' FEL, SECTION 2, T27N, R9W, N.M.P.M.
SAN JUAN COUNTY, NEW MEXICO



DRILLING CONTROL
CONDITION II-B 3000 WP
FOR AIR DRILLING OR
WHERE NITROGEN OR AIR BLOWS ARE EXPECTED

H₂S TRIM REQUIRED
YES _____ NO _____



DRILLING CONTROL

MATERIAL LIST - CONDITION II - B

- | | |
|-------------------|---|
| A. | Texaco Wellhead |
| B. | 3000# W.P. drilling spool with a 2" minimum flanged outlet for kill line and 3" minimum flanged outlet for choke line. |
| C. | 3000# W.P. Dual ram type preventer, hydraulic operated with 1" steel, 3000# W.P. control lines (where sub-structure height is adequate, 2 - 3000# W.P. single ram type preventers may be utilized). |
| D. | Rotating Head with fill up outlet and extended Bleed Line. |
| 1, 3, 4,
7, 8. | 2" minimum 3000# W.P. flanged full opening steel gate valve, or Halliburton Lo Torc Plug valve. |
| 2 | 2" minimum 3000# W.P. back pressure valve. |
| 5, 6, 9 | 3" minimum 3000# W.P. flanged full opening steel gate valve, or Halliburton Lo Torc Plug valve. |
| 12 | 3" minimum schedule 40, Grade "B", seamless line pipe. |
| 13 | 2" minimum x 3" minimum 3000# W.P. flanged cross. |
| 10, 11 | 2" minimum 3000# W.P. adjustable choke bodies. |
| 14 | Cameron Mud Gauge or equivalent (location optional in choke line). |
| 15 | 2" minimum 3000# W.P. flanged or threaded full opening steel gate valve, or Halliburton Lo Torc Plug valve. |

BTJ

TEXACO, INC.
DALLAS, TEXAS

BTJ