

UNITED STATES
DEPARTMENT OF THE INTERIOR
BUREAU OF LAND MANAGEMENT

SUBMIT IN TRIPLICATE*
(Other instructions on
reverse side)

FORM APPROVED
OMB NO. 1004-0136
Expires: February 28, 1995

APPLICATION FOR PERMIT TO DRILL OR DEEPEN

1a. TYPE OF WORK

DRILL ☒

DEEPEN ☐

b. TYPE OF WELL

OIL
WELL ☐

GAS
WELL ☒

OTHER

SINGLE
ZONE ☒

MULTIPLE
ZONE ☐

2. NAME OF OPERATOR

Cross Timbers Operating Company

3. ADDRESS AND TELEPHONE NO.

2700 Farmington Ave., Bldg. K. Ste 1 Farmington, NM 87401

4. LOCATION OF WELL (Report location clearly and in accordance with any State requirements.)
At surface

2,465' FNL & 890' FEL Sec 28, T27N, R08W

At proposed prod. zone

same

14. DISTANCE IN MILES AND DIRECTION FROM NEAREST TOWN OR POST OFFICE*

Approx 24 miles south down Largo Canyon from the Blanco NM Post Office

15. DISTANCE FROM PROPOSED*
LOCATION TO NEAREST
PROPERTY OR LEASE LINE, FT.

(Also to nearest drlg. unit line, if any) 890'

16. NO. OF ACRES IN LEASE

312.22

17. NO. OF ACRES ASSIGNED
TO THIS WELL

312.22

18. DISTANCE FROM PROPOSED LOCATION*
TO NEAREST WELL, DRILLING, COMPLETED,
OR APPLIED FOR, ON THIS LEASE, FT.

900'

19. PROPOSED DEPTH

4,950'

20. ROTARY OR CABLE TOOLS

0'-4,950' w/Rotary Tools

21. ELEVATIONS (Show whether DF, RT, GR, etc.)

6,115' GL

22. APPROX. DATE WORK WILL START*

July, 2001

23.

PROPOSED CASING AND CEMENTING PROGRAM

SIZE OF HOLE	GRADE SIZE OF CASING	WEIGHT PER FOOT	SETTING DEPTH	QUANTITY OF CEMENT
12-1/4"	8-5/8", J-55	24#	365'	260 sx c1 "B" Circ.
7-7/8"	4-1/2", J-55	10.5#	4,950'—	Lead: 275 sx c1 "B" w/2% Extender Tail: 461 sx c1 "B" w/2% Extender

This action is subject to technical and
procedural review pursuant to 43 CFR 3160.3
and appeal pursuant to 43 CFR 3160.4.

PROPOSED PROGRAM - HORIZONTAL AND
SUBSURFACE DATA NOT AVAILABLE
"GENERAL REQUIREMENTS"

Cross Timbers plans to drill the above mentioned well as described in the enclosed Surface Use
Program.

IN ABOVE SPACE DESCRIBE PROPOSED PROGRAM: If proposal is to deepen, give data on present productive zone and proposed new productive zone. If proposal is to drill or deepen directionally, give pertinent data on subsurface locations and measured and true vertical depths. Give blowout preventer program, if any.

24.

SIGNED

TITLE Drilling Engineer

DATE 3/28/01

(This space for Federal or State office use)

PERMIT NO.

APPROVAL DATE

Application approval does not warrant or certify that the applicant holds legal or equitable title to those rights in the subject lease which would entitle the applicant to conduct operations thereon.

CONDITIONS OF APPROVAL, IF ANY:

JUN 18

APPROVED BY

/s/ Lee Otten

TITLE

DATE

*See Instructions On Reverse Side

NMOCD

Title 18 U.S.C. Section 1001, makes it a crime for any person knowingly and willfully to make to any department or agency of the United States any false, fictitious or fraudulent statements or representations as to any matter within its jurisdiction.

DISTRICT I
P.O. Box 1980, Hobbs, N.M. 88241-1980

DISTRICT II
P.O. Drawer DD, Artesia, N.M. 88211-0719

DISTRICT III
1000 Rio Brazos Rd., Aztec, N.M. 87410

DISTRICT IV
PO Box 2088, Santa Fe, NM 87504-2088

State of New Mexico
Energy, Minerals & Natural Resources Department

OIL CONSERVATION DIVISION

P.O. Box 2088
Santa Fe, NM 87504-2088

Form C-102

Revised February 21, 1994

Instructions on back

Submit to Appropriate District Office

State Lease - 4 Copies

Fee Lease - 3 Copies

DEC 14 2000

☐ AMENDED REPORT

WELL LOCATION AND ACREAGE DEDICATION PLAT

¹ API Number 30-045-30657		² Pool Code 72319	³ Pool Name BLANCO MESA VERDE
⁴ Property Code 28096	⁵ Property Name BOLACK C		⁶ Well Number 10B
⁷ GRID No. 167067	⁸ Operator Name CROSS TIMBERS OPERATING CO.		⁹ Elevation 6115'

¹⁰ Surface Location

UL or lot no.	Section	Township	Range	Lot Idn	Feet from the	North/South line	Feet from the	East/West line	County
H	28	27-N	8-W		2465'	NORTH	890'	EAST	SAN JUAN

¹¹ Bottom Hole Location If Different From Surface

UL or lot no.	Section	Township	Range	Lot Idn	Feet from the	North/South line	Feet from the	East/West line	County
¹² Dedicated Acres 312.22 E/2		¹³ Joint or Infill I		¹⁴ Consolidation Code		¹⁵ Order No.			

NO ALLOWABLE WILL BE ASSIGNED TO THIS COMPLETION UNTIL ALL INTERESTS HAVE BEEN CONSOLIDATED
OR A NON-STANDARD UNIT HAS BEEN APPROVED BY THE DIVISION

¹⁶ FD 3 1/2" BC B.L.M. 1955	N 86-32-00 W	4999.50' (G.L.O.)	CALC'D CORNER	¹⁷ OPERATOR CERTIFICATION I hereby certify that the information contained herein is true and complete to the best of my knowledge and belief Signature <u>NEW Patten</u> Printed Name <u>SEYMOUR W PATTEN</u> Title <u>DRILLING ENGINEER</u> Date <u>12/14/00</u>
	LAT: 36°32.7' N. LONG: 107°40.9' W.			
N 0-30 W (RECORD)		28	377'	¹⁸ SURVEYOR CERTIFICATION I hereby certify that the well location shown on this plat was plotted from field notes of actual surveys made by me or under my supervision, and that the same is true and correct to the best of my belief Date of Survey <u>12-8-00</u> Signature and Seal of Professional Surveyor: <u>ROY A. RUSH</u> 8894 Certificate Number

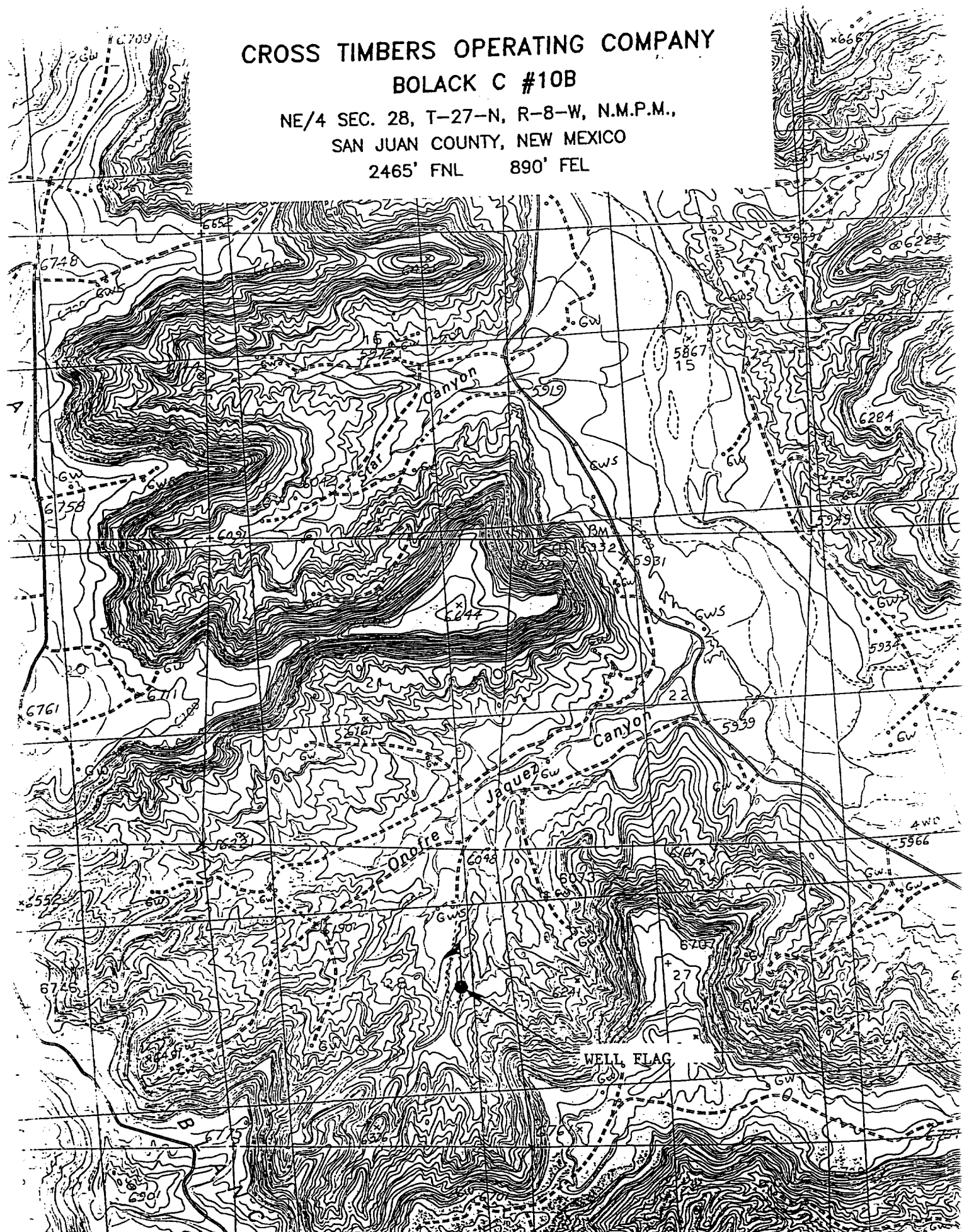
CROSS TIMBERS OPERATING COMPANY

BOLACK C #10B

NE/4 SEC. 28, T-27-N, R-8-W, N.M.P.M.,

SAN JUAN COUNTY, NEW MEXICO

2465' FNL 890' FEL



4. CEMENT PROGRAM (Slurry design may change slightly, but the plan is to circulate cement to surface on both casing strings):

A. Surface: 8-5/8", 24#, J-55, STC casing to be set at $\pm 365'$.

Lead: 260 sx of Class "B" cement containing 2% CaCl_2 , ¼ pps celloflake, mixed at 15.6 ppg, 1.18 ft^3/sk , & 5.20 gal wtr/sk.

Total slurry volume is 306 ft^3 , 100% excess of calculated annular volume to 400'.

B. Production: 4-1/2", 10.5#, J-55, STC casing to be set at $\pm 4,950'$.

Lead: 275 sx of Class "B" cement containing 2% D-79 (extender), ¼ pps D-29 (celloflake) and 2% S-1 (CaCl_2) mixed at 11.4 ppg, 2.87 ft^3/sk , 17.63 gal wtr/sx.

Tail: 461 sx of Class "B" cement containing 2% D-79 (extender), ¼ pps D-29 (celloflake) and 2% S-1 (CaCl_2) mixed at 13.5 ppg, 1.71 ft^3/sk , 8.93 gal wtr/sx..

Total estimated slurry volume (including 40% excess) for the 4-1/2" production casing is 1,577 ft^3 .

Note: The slurry design may change slightly based upon actual conditions. Final cement volumes will be determined for the caliper logs plus 40%. It will be attempted to circ cement to surface.

5. LOGGING PROGRAM:

A. Mud Logger: There are no plans to use a mud logger at this time.

B. Open Hole Logs as follows: Run Dual Induction/SFL/GR/SP fr/TD ($\pm 4,975'$) to the bottom of the surface csg. Run CNL/LDT (Lithodensity)/GR/Cal and Pe from TD to 1,500'.

6. FORMATION TOPS:

Formation	Subsea Depth	Well Depth
Ojo Alamo SS	+4822'	1308'
Kirtland Shale	+4671'	1459'
Fruitland Formation	+4325'	1805'
Lower Fruitland Coal	+4025'	2105'
Pictured Cliffs SS	+3960'	2170'
Lewis Shale	+3835'	2295'
Chacra	+3055'	3075'
Cliffhouse SS	+2379'	3751'
Menefee*	+2291'	3839'
Point Lookout SS*	+1669'	4461'
Mancos Shale	+1284'	4846'
Projected TD	+1180'	4950'

* Target Reservoir. Maximum anticipated reservoir pressure will be $\pm 1,550$ psig.



Cross Timbers Operating Company

BOP SCHEMATIC FOR DRILLING OPERATIONS CLASS 1 (2M) NORMAL PRESSURE

ROTATING HEAD
(OPTIONAL)

FILL UP LINE

FLOW LINE
TO PIT

BLIND
RAMS

PIPE
RAMS

KILL LINE
2" dia min.

TO CHOKE
MANIFOLD
2" dia min.

See Choke Manifold drawing for
specifications

HCR VALVE (OPTIONAL)

2" (MIN) FULL OPENING
VALVE

MUD CROSS

** Remove check or ball
from check valve and
press test to same press
as BOP's. **

1. Test BOP after installation:

Pressure test BOP to 200-300
psig (low pressure) for 5 min.

Test BOP to Working Press or
to 70% internal yield of surf csg
(10 min).

2. Test operation of (both) rams
on every trip.

3. Check and record Accumulator
pressure on every tour.

4. Re-pressure test BOP stack after
changing out rams.

5. Have kelly cock valve with handle available.

6. Have safety valve and subs to fit all sizes of
drill string.

TESTING
PROCEDURE