

UNITED STATES
DEPARTMENT OF THE INTERIOR
BUREAU OF LAND MANAGEMENT

FORM APPROVED
OMB No. 1004-0136
Expires November 30, 2000

APPLICATION FOR PERMIT TO DRILL OR REENTER

1a. Type of Work: <input checked="" type="checkbox"/> DRILL <input type="checkbox"/> REENTER		5. Lease Serial No. NMSF - 078590 0 7717-3	
1b. Type of Well: <input type="checkbox"/> Oil Well <input checked="" type="checkbox"/> Gas Well <input type="checkbox"/> Other		6. If Indian, Allottee or Tribe Name	
2. Name of Operator AMOCO PRODUCTION COMPANY		7. If Unit or CA Agreement, Name and No.	
3a. Address P.O. BOX 3092 HOUSTON, TX 77253		8. Lease Name and Well No. WARREN COM 1M	
3b. Phone No. (include area code) Ph: 281.366.4491 Fx: 281.366.0700		9. API Well No. 30-045-30707	
4. Location of Well (Report location clearly and in accordance with any State requirements.) At surface SWNW Lot E 1980FNL 660FWL 35.39800 N Lat, 107.44800 W Lon At proposed prod. zone		10. Field and Pool, or Exploratory BASIN DAKOTA/BLANCO MESAVERDE	
14. Distance in miles and direction from nearest town or post office* 17 MILES FROM BLOOMFIELD, NM		11. Sec., T., R., M., or Blk. and Survey or Area E Sec 13 T28N R9W Mer NMP	
15. Distance from proposed location to nearest property or lease line, ft. (Also to nearest drig. unit line, if any)		12. County or Parish SAN JUAN	
16. No. of Acres in Lease 320.00		13. State NM	
18. Distance from proposed location to nearest well, drilling, completed, applied for, on this lease, ft.		17. Spacing Unit: dedicated to this well 320.00 W 2	
19. Proposed Depth 7057.3 MD 7036		20. BLM/BIA Bond No. on file	
21. Elevations (Show whether DF, KB, RT, GL, etc.) 5962 GL		23. Estimated duration	
22. Approximate date work will start 07/15/2001			

24. Attachments

The following, completed in accordance with the requirements of Onshore Oil and Gas Order No. 1, shall be attached to this form:

1. Well plat certified by a registered surveyor.
2. A Drilling Plan.
3. A Surface Use Plan (if the location is on National Forest System Lands, the SUPO shall be filed with the appropriate Forest Service Office).
4. Bond to cover the operations unless covered by an existing bond on file (see Item 20 above).
5. Operator certification
6. Such other site specific information and/or plans as may be required by the authorized officer.

25. Signature	Name (Printed/Typed) MARY CORLEY	Date 06/19/2001
Title AUTHORIZED REPRESENTATIVE		
Approved by (Signature) /s/ Joel Farrell	Name (Printed/Typed)	Date AUG - 6
Title	Office	

Application approval does not warrant or certify the applicant holds legal or equitable title to those rights in the subject lease which would entitle the applicant to conduct operations thereon.
Conditions of approval, if any, are attached.

Title 18 U.S.C. Section 1001 and Title 43 U.S.C. Section 1212, make it a crime for any person knowingly and willfully to make to any department or agency of the United States any false, fictitious or fraudulent statements or representations as to any matter within its jurisdiction.

Additional Operator Remarks (see next page)

Electronic Submission #5109 verified by the BLM Well Information System
For AMOCO PRODUCTION COMPANY, sent to the Farmington
Committed to AFMSS for processing by Maurice Johnson on 06/20/2001 ()

This action is subject to technical and
procedural review pursuant to 43 CFR 3165.3
and appeal pursuant to 43 CFR 3165.4.

** ORIGINAL ** ORIGINAL ** ORIGINAL ** ORIGINAL ** ORIGINAL ** ORIGINAL ** ORIGINAL **

10000

K

Dist 'ct 4
PO Box 1980, Hobbs NM 88241-1980
District II
PO Drawer KK, Artesia, NM 87211-0719
District III
1000 Rio Brazos Rd., Aztec, NM 87410
District IV
PO Box 2088, Santa Fe, NM 87504-2088

State of New Mexico
Energy, Minerals & Natural Resources Department

OIL CONSERVATION DIVISION
PO Box 2083
Santa Fe, NM 87504-2083

Form C-102
Revised February 21, 1994
Instructions on back
Submit to Appropriate District Office
State Lease - 4 Copies
Fee Lease - 3 Copies

☐ AMENDED REPORT

WELL LOCATION AND ACREAGE DEDICATION PLAT

1 API Number 30-045-30707		2 Pool Code 71599-72319		3 Pool Name BASIN DAKOTA * BLANCO YESAVERDE	
4 Property Code 001211		5 Property Name Warren Com			6 Well Number # 1M
7 OGRID No. 000778		8 Operator Name AMOCO PRODUCTION COMPANY			9 Elevation 5962

10 Surface Location

UL or Lot No. E	Section 13	Township 28 N	Range 9 W	Lot Idn	Feet from the 1980	North/South line NORTH	Feet from the 660	East/West line WEST	County SAN JUAN
--------------------	---------------	------------------	--------------	---------	-----------------------	---------------------------	----------------------	------------------------	--------------------

11 Bottom Hole Location If Different From Surface

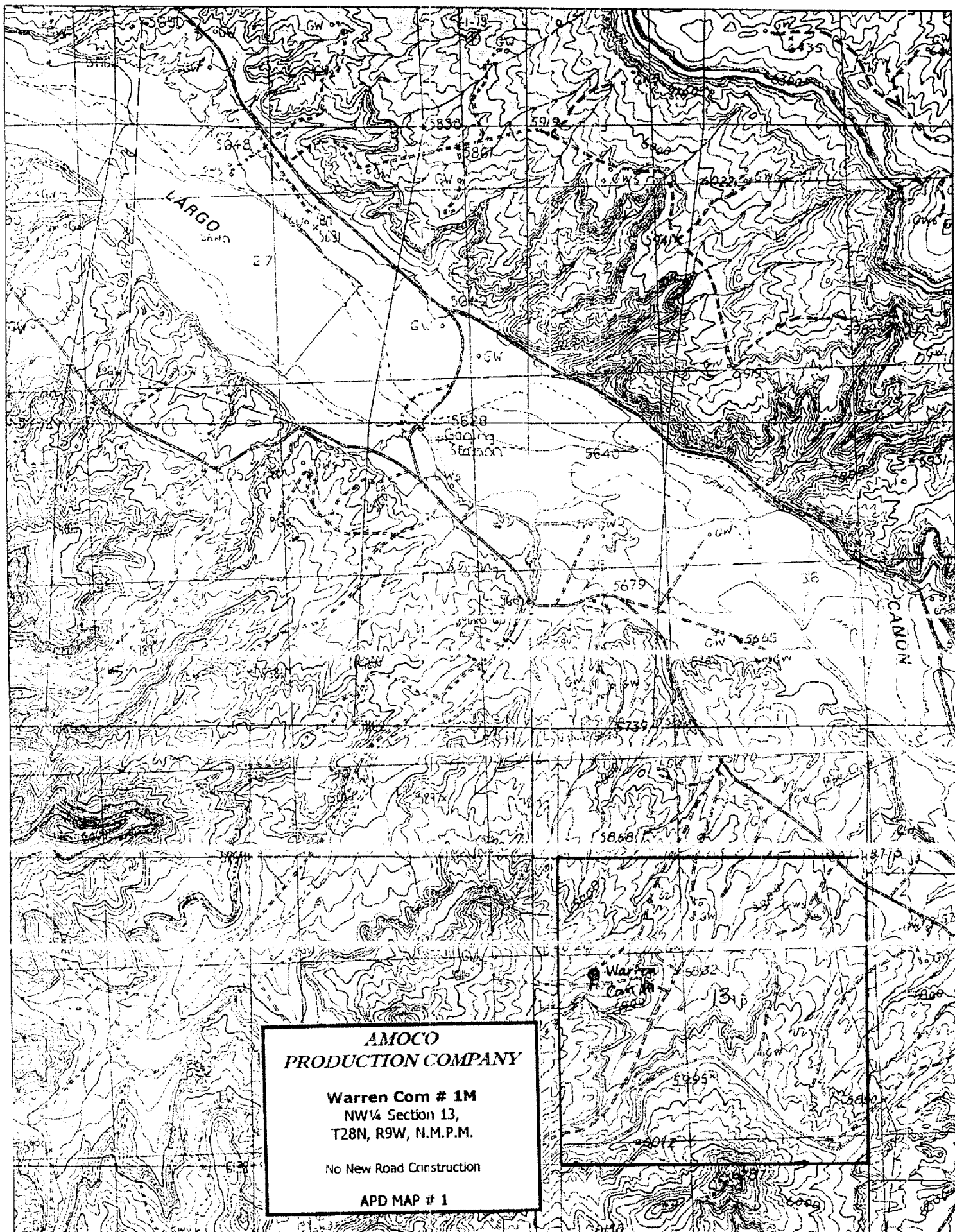
UL or lot no.	Section	Township	Range	Lot Idn	Feet from the	North/South line	Feet from the	East/West line	County
---------------	---------	----------	-------	---------	---------------	------------------	---------------	----------------	--------

12 Dedicated Acres 320.	13 Joint or Infill	14 Consolidation Code	15 Order No.
----------------------------	--------------------	-----------------------	--------------

NO ALLOWABLE WILL BE ASSIGNED TO THIS COMPLETION UNTIL ALL INTERESTS HAVE BEEN CONSOLIDATED
OR A NON-STANDARD UNIT HAS BEEN APPROVED BY THE DIVISION

	<p>17 OPERATOR CERTIFICATION</p> <p>I hereby certify that the information contained herein is true and complete to the best of my knowledge and belief.</p> <p>Signature: <i>Mary Corley</i></p> <p>Printed Name: MARY CORLEY</p> <p>Title: SR. ADMIN ANALYST</p> <p>Date: 06.19.2001</p>
	<p>18 SURVEYOR CERTIFICATION</p> <p>I hereby certify that the well location shown on this plat was plotted from field notes of actual surveys made by me or under my supervision, and that the same is true and correct to the best of my belief.</p> <p>Date of Survey: February 22, 2001</p> <p>Signature and Seal of Professional Surveyor: <i>GARY D. ANN</i></p> <p>7016</p> <p>Certificate Number</p>

(R) - OLC Record



Well No: 1M
Surface Location: 13-28N-9W, 1980 FNL,660 FWL
Field: Blanco Mesaverde/Basin Dakota

Form 46 12-00 KAT

Amoco Production Company
BOP Pressure Testing Requirements

Well Name: Warren Com 3M
County: San Juan State: New Mexico

Formation	TVD	Anticipated Bottom Hole Pressure	Maximum Anticipated Surface Pressure **
Ojo Alamo	1163		
Fruitland Coal	1763		
PC	2323		
Lewis Shale	2423		
Cliff House	4004	500	0
Menefee Shale	4034		
Point Lookout	4581	600	0
Mancos	4903		
Dakota	6643	2600	1416

** Note: Determined using the following formula: ABHP - (.22 * TVD) = ASP

Requested BOP Pressure Test Exception: 3000 PSI

SAN JUAN BASIN
Dakota Formation
Pressure Control Equipment

Background

The objective Dakota formation maximum surface pressure is anticipated to be less than 1000 PSI, based on shut-in surface pressures from adjacent wells. Pressure control equipment working pressure minimum requirements are therefore 2000 PSI. Equipment to be used will conform to API RP-53 (Figure 2.C.2) for a 2000 PSI system per Federal Onshore Order No. 2. Due to available conventional equipment within the area, 3000 PSI rated pressure control equipment will typically be utilized in a double ram type arrangement. Regional drilling rights to be utilized have substructure height limitations which exclude the use of annular preventers; therefore a rotating head will be installed above these rams. This pressure control equipment will be utilized for conventional drilling below conductor to total depth in the Basin Dakota. No abnormal temperature, pressure, or H2S anticipated.

Equipment Specification

Interval

BOP Equipment

Below conductor casing to total depth 11" nominal or 7 1/16",3000 PSI
double ram preventer with rotating
head.

All ram type preventers and related control equipment will be hydraulically tested to 250 PSI (low pressure) and 2000 PSI (high pressure), upon installation, following any repairs or equipment replacements, or at 30 day intervals. Accessories to BOP equipment will include kelly cock, upper kelly cock with a handle available, floor safety valves and choke manifold which will also be tested to equivalent pressure.