

APPLICATION FOR PERMIT TO DRILL OR DEEPEN

b1

District II
PO Drawer DD, Artesia, NM 88211-0719
District III
1000 Rio Brazos Rd., Aztec, NM 87410
District IV
PO Box 2088, Santa Fe, NM 87504-2088

OIL CONSERVATION DIVISION
PO Box 2088
Santa Fe, NM 87504-2088

Submit to Appropriate District Office
State Lease - 4 Copies
Fee Lease - 3 Copies

☐ AMENDED REPORT

WELL LOCATION AND ACREAGE DEDICATION PLAT

* API Number 30045-30781		* Post Code 87190	* Pool Name WAW FR SN PC
* Property Code 29413	* Property Name No Doubt		* Well Number 90
* OGRID No. C06515	* Operator Name Dugan Production Corporation		* Elevation 5875' Estimated

¹⁰ Surface Location


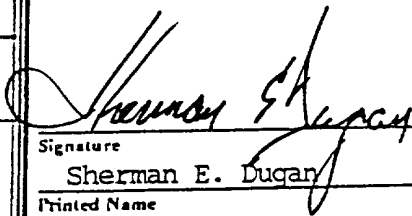

UL or lot no.	Section	Township	Range	Lot Idn	Feet from the	North/South line	Feet from the	East/West line	County
8	6	27N	13W		790	North	1850	East	San Juan

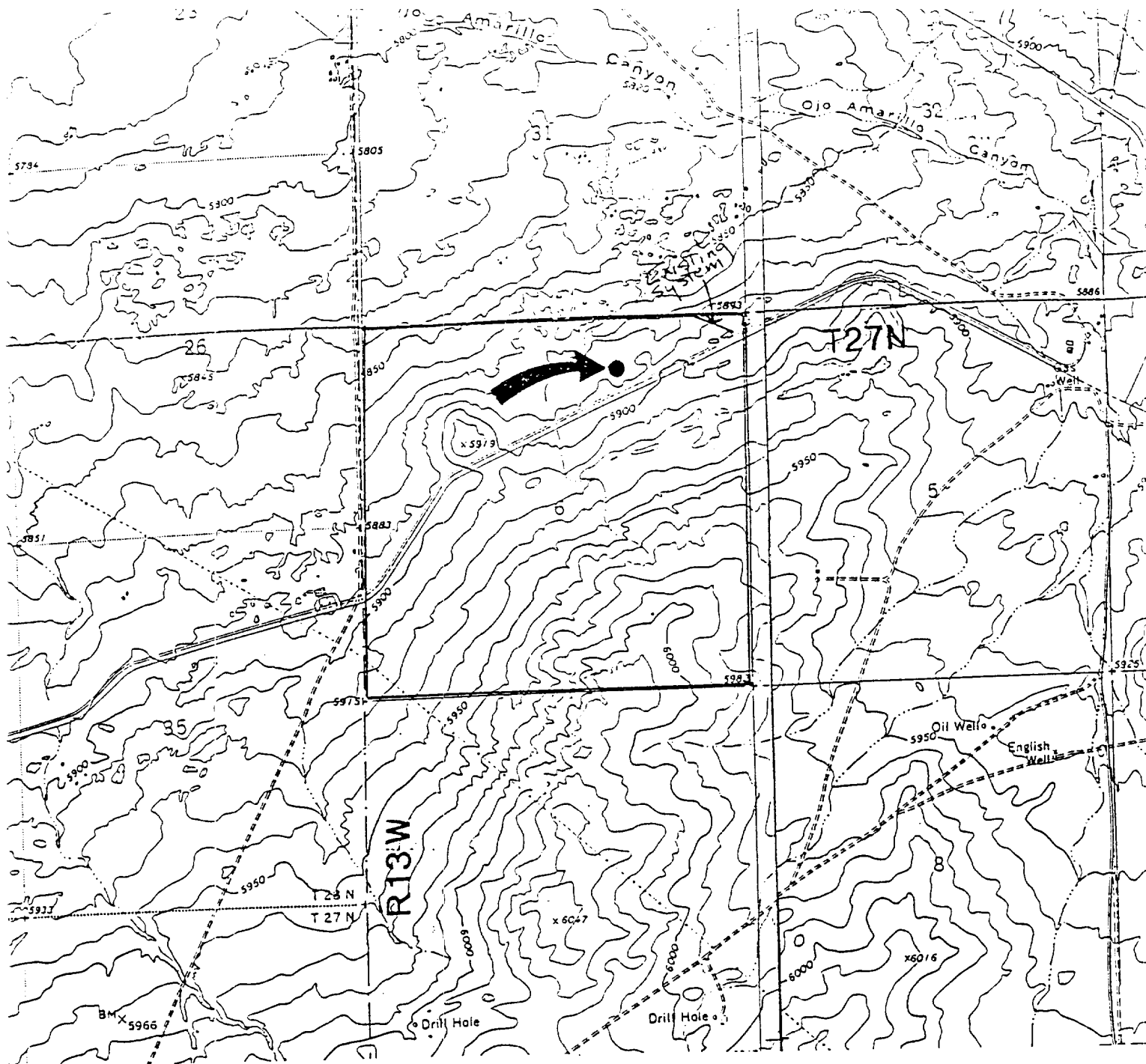
" Bottom Hole Location If Different From Surface

UL or lot no.	Section	Township	Range	Lot lds	Feet from the	North/South line	Feet from the	East/West line	County
---------------	---------	----------	-------	---------	---------------	------------------	---------------	----------------	--------

" Dedicated Acres 160159.49	" Joint or Infill	" Consolidation Code	" Order No.
--------------------------------	-------------------	----------------------	-------------

NO ALLOWABLE WILL BE ASSIGNED TO THIS COMPLETION UNTIL ALL INTERESTS HAVE BEEN CONSOLIDATED
OR A NON-STANDARD UNIT HAS BEEN APPROVED BY THE DIVISION

16		Dugan Production Corp. 790' NM-89131 	17 OPERATOR CERTIFICATION I hereby certify that the information contained herein is true and complete to the best of my knowledge and belief  Signature Sherman E. Dugan Printed Name Vice-President Title June 4, 1997 Date
	Section 6		18 SURVEYOR CERTIFICATION I hereby certify that the well location shown on this plat was plotted from actual surveys made by me or under my direction and the same is true and correct to the best of my knowledge and belief. Date of Survey Signature of Professional Surveyor  Edgar L. Risenkover Certificate Number 5979



Existing Roads

Exhibit E

Vicinity of nearest town or reference pt.
Approx. 3 mi. SW of NAPI Headquarters

Type of surface dirt

Conditions good

Other _____

Reference map: USGS map Kirtland

SE and Hugh Lake, NM

Dugan Production Corp.-No Doubt 90

Planned Access Road(s)

Exhibit E

Width --- Maximum grades ---

Drainage design as required

Cuts & Fills as required

Surfacing material none

☒ Turnouts

☒ Culverts

☒ Gates

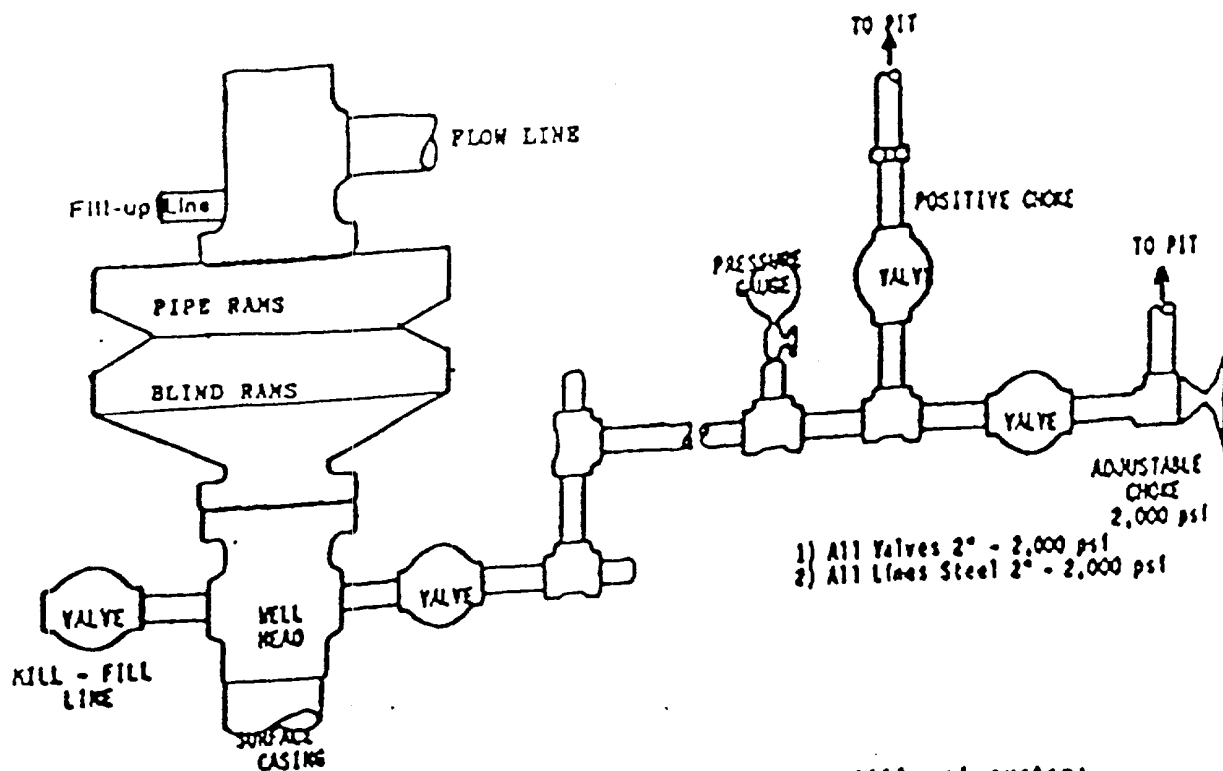
☒ Cattleguards

☒ Fence cuts

☒ Waterbars

☒ Access Road &
Pipeline

Access road(s) do do not cross Fed/Ind land.
No new access required--will use roads
designated by NAPI



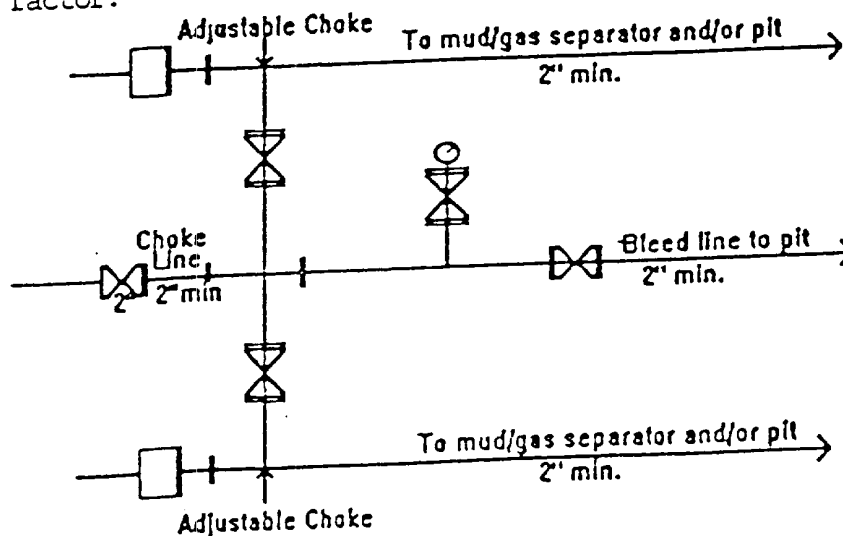
- 1) All Valves 2" - 2,000 psi
- 2) All Lines Steel 2" - 2,000 psi

BOP and Related Equipment will include for a 2000 psi system:

2000 PSI DOUBLE RAM BLOWOUT PREVENTER

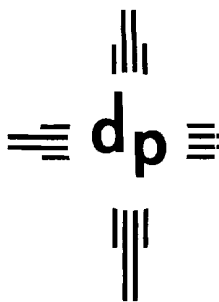
- Kill line (3" minimum)
- 1 kill line valve (3" minimum)
- 1 choke line valve
- 2 chokes
- Upper Kelly cock valve with handle available
- Safety valve and subs to fit all drill string connections in use
- Pressure gauge on choke manifold
- 2" minimum choke line
- Fill-up line above the uppermost preventer

BOP equipment will be tested as required in Section III A.1 of Onshore Order 2, plus a 30% safety factor.



200 PSI Choke Manifold Equipment - Configuration May Vary

NO DOUBT #90
EXHIBIT D



dugan production corp.

April 10, 2002

New Mexico Oil Conservation Division
1000 Rio Erazos Road
Aztec, NM 87410


Re: Dugan Production Corp.
No Doubt #90
API #30 045 30781
Unit B, Sec. 6, T27N, R13W
San Juan County, NM

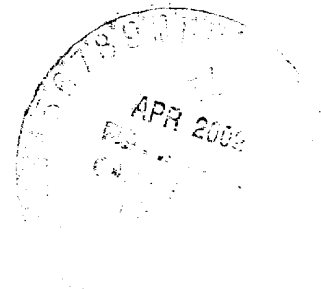
Gentlemen:

Below are the deviations reported by the drilling contractor for the subject well:

1/8° @ 500'
3/4° @ 1,000'
1° @ 1,395'

Sincerely,



John Alexander
Vice-President



JA:sh

State of New Mexico) ss
County of San Juan)

Subscribed and sworn to before me this 10th day of April, 2002.


Notary Public

My Commission Expires: 9/8/05