

APPLICATION FOR PERMIT TO DRILL, DEEPEN, OR PLUG BACK

~~700 OCT -2 PM 3:00~~

NOV 2001

ALL INFORMATION CONTAINED HEREIN IS UNCLASSIFIED
EXCEPT WHERE SHOWN OTHERWISE AND IS NOT TO BE RELEASED
EXCEPT TO THE EXTENT AUTHORIZED BY THE ATTACHED
"GENERAL REGULATIONS"

APPROVAL DATE

APPROVED BY

TITLE

AFM

DATE _____

Title 18 U.S.C. Section 1001, makes it a crime for any person knowingly and willfully to make to any department or agency of the United States any false, fictitious or fraudulent statements or presentations as to any matter within its jurisdiction.

District I
PO Box 1980, Hobbs, NM 88241-1980

District II
PO Drawer DD, Artesia, NM 88211-0719

District III
1000 Rio Brazos Rd., Aztec, NM 87410

District IV
PO Box 2088, Santa Fe, NM 87504-2088

State of New Mexico
Energy, Minerals & Natural Resources Department

OIL CONSERVATION DIVISION
PO Box 2088
Santa Fe, NM 87504-2088

Form C-102
Revised February 21, 1994
Instructions on back
Submit to Appropriate District Office
State Lease - 4 Copies
Fee Lease - 3 Copies

☐ AMENDED REPORT

WELL LOCATION AND ACREAGE DEDICATION PLAT

| | | | |
|-----------------------------|---|---------------------|--|
| *API Number 30-045-30862 | | *Pool Code 77200 | *Pool Name Fulcher Kutz Pictured Cliffs |
| *Property Code 6916 | *Property Name CLEVELAND | | *Well Number 7R |
| *OCRID No. 14538 | *Operator Name BURLINGTON RESOURCES OIL & GAS COMPANY LP | | *Elevation 6258' |

¹⁰ Surface Location

| UL or lot no. | Section | Township | Range | Lot Idn | Feet from the | North/South line | Feet from the | East/West line | County |
|---------------|---------|----------|-------|---------|---------------|------------------|---------------|----------------|----------|
| J | 21 | 27N | 9W | | 1675 | SOUTH | 1660 | EAST | SAN JUAN |

¹¹ Bottom Hole Location If Different From Surface

| UL or lot no. | Section | Township | Range | Lot Idn | Feet from the | North/South line | Feet from the | East/West line | County |
|---------------|---------|----------|-------|---------|---------------|------------------|---------------|----------------|--------|
| | | | | | | | | | |

| | | | |
|---|-------------------------------|----------------------------------|-------------------------|
| ¹² Dedicated Acres SE/4 160 | ¹³ Joint or Infill | ¹⁴ Consolidation Code | ¹⁵ Order No. |
|---|-------------------------------|----------------------------------|-------------------------|

NO ALLOWABLE WILL BE ASSIGNED TO THIS COMPLETION UNTIL ALL INTERESTS HAVE BEEN CONSOLIDATED
OR A NON-STANDARD UNIT HAS BEEN APPROVED BY THE DIVISION

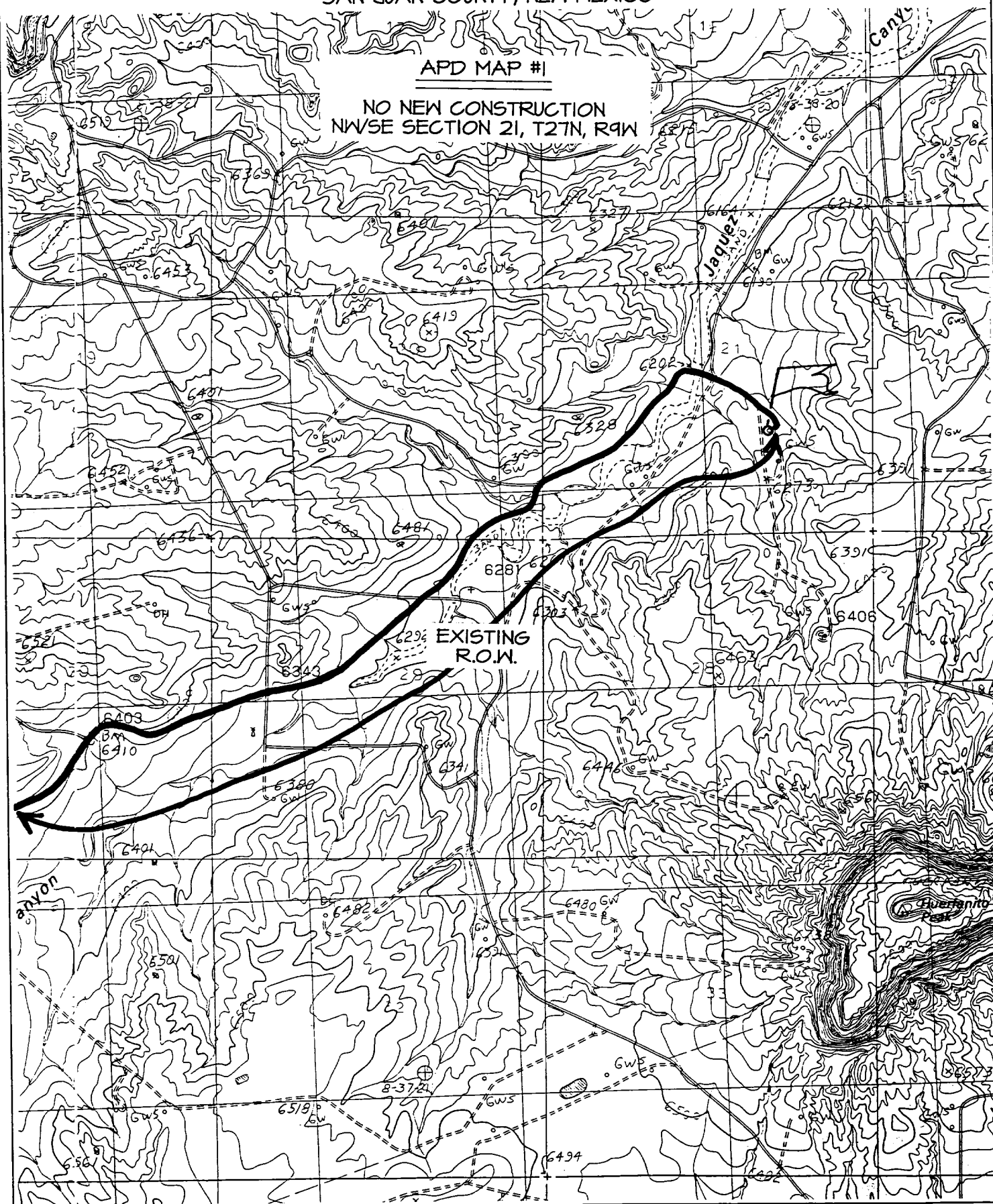
| | |
|--|--|
| <div>16</div> <div>5264.16'</div> <div>5212.68'</div> <div>5281.98'</div> <div>5247.00'</div> <div>965'</div> <div>1660'</div> <div>955'</div> <div>1675'</div> <div>LAT: 36°33.5'N</div> <div>LONG: 107°47.4'W</div> <div>USA NM-011393</div> | <div>17 OPERATOR CERTIFICATION</div> <p>I hereby certify that the information contained herein is true and complete to the best of my knowledge and belief</p> <div></div> <div>Signature</div> <div>Peggy Cole</div> <div>Printed Name</div> <div>Regulatory Supervisor</div> <div>Title</div> <div>9-28-01</div> <div>Date</div> |
| | <div>18 SURVEYOR CERTIFICATION</div> <p>I hereby certify that the well location shown on this plat was plotted from field notes of actual surveys made by me or under my supervision and that the same is true and correct to the best of my belief.</p> <div>JULY 14, 2001</div> <div>Date of Survey</div> <div></div> <div>Signature and Seal of Professional Surveyor</div> <div></div> <div>Certificate No. 6857</div> |

1675' FSL & 1660' FEL, SECTION 21, T27N, R9W, N.M.P.M.
SAN JUAN COUNTY, NEW MEXICO

1675' FSL & 1660' FEL, SECTION 21, T27N, R9W, N.M.P.M.
SAN JUAN COUNTY, NEW MEXICO

APD MAP #1

NO NEW CONSTRUCTION
NW/SE SECTION 21, T27N, R9W



OPERATIONS PLAN

Well Name: Cleveland #7R
Location: 1675' FSL, 1660' FEL, Section 21, T-27-N, R-9-W
San Juan County, New Mexico
Latitude 36° 33.5' N, Longitude 107° 47.4' W
Formation: Fulcher Kutz Pictured Cliffs
Elevation: 6258' GR

| Formation: | Top | Bottom | Contents |
|--------------------|--------------|---------------|-----------------|
| Surface | San Jose | 1238' | |
| Ojo Alamo | 1238' | 1360' | aquifer |
| Kirtland | 1360' | 1716' | gas |
| Fruitland | 1716' | 2144' | gas |
| Pictured Cliffs | 2144' | | gas |
| Total Depth | 2344' | | |

Logging Program: cased hole - CBL/GR/CCL TD to surface

Coring Program: None

Mud Program:

| <u>Interval</u> | <u>Type</u> | <u>Weight</u> | <u>Vis.</u> | <u>Fluid Loss</u> |
|-----------------|-------------|---------------|-------------|-------------------|
| 0- 120' | Spud | 8.4-9.0 | 40-50 | no control |
| 120-2344' | FW | 8.4-9.0 | 32-45 | no control |

Casing Program (as listed, equivalent, or better):

| <u>Hole Size</u> | <u>Depth Interval</u> | <u>Csg. Size</u> | <u>Wt.</u> | <u>Grade</u> |
|------------------|-----------------------|------------------|------------|--------------|
| 9 7/8" | 0 - 120' | 7" | 20# | J-55 |
| 6 1/4" | 0 - 2344' | 2 7/8" | 6.5# | J-55 |

Float Equipment: 7" surface casing - saw tooth guide shoe.
Centralizers will be run in accordance with Onshore Order #2.

2 7/8" production casing - float shoe on bottom. Three centralizers run every other joint above shoe. Seven centralizers run every 3rd joint to the base of the Ojo Alamo @ 1360'. Two turbolizing type centralizers - one below and one into the base of the Ojo Alamo @ 1360'. Standard centralizers thereafter every fourth joint up to the base of the surface pipe.

Wellhead Equipment: 7" x 2 7/8" 2000 psi screw on independent wellhead.

Cementing:

7" surface casing - cement with 27 sx Class A, B Portland Type I, II cement (32 cu.ft. of slurry, bring cement to surface through 3/4" line). WOC 8 hrs. Test casing to 600 psi for 30 minutes.

2 7/8" production casing - Lead w/311 sx Premium Lite cement w/3% calcium chloride, 1/4 pps flocele, 5 pps LCM-1, 0.4% FL-52, and 0.4% SMS. Tail w/90 sx Type III cement w/1% calcium chloride, 1/4 pps flocele, and 0.2% FL-52 (788 cu.ft. of slurry, 100% excess to circulate to surface).

Note: If open hole logs are run, cement volumes will be based on 25% excess over caliper volumes.

BOP and tests:

Surface to TD - 11" 2000 psi (minimum double gate BOP stack (Reference Figure #1). Prior to drilling out surface casing, test rams to 600 psi/30 min.

Completion - 7 1/16" 2000 psi (minimum) double gate BOP stack (Reference Figure #2). Prior to completion operations, test rams and casing to 2000 psi/15 min.

From surface to TD - choke manifold (Reference Figure #3).

Pipe rams will be actuated to least once each day and blind rams actuated once each trip to test proper functioning. An upper kelly cock valve with handle and drill string safety valves to fit each drill string will be maintained and available on the rig floor.

BOP and tests (If a coiled tubing drilling (CTD) rig is utilized.):

Surface to TD: 7-1/16" 2000 psi (minimum) Torus annular BOP stack (Reference Figure #1b). Prior to drilling out surface casing, test annular BOP to 600psi/30 min.

Completion: 7-1/16" 2000 psi (minimum) double gate BOP stack (Reference Figure #2). Prior to completion operations, test blind rams and casing to 1500 psi for 30 minutes; all pipe rams and casing to 1500 psi for 30 minutes each. **Same as in original APD operations plan.**

From surface to TD: choke manifold (Reference Figure #3). **Same as in original APD operations plan.**

The annular BOP will be actuated to close on drill pipe (coiled tubing) at least once each day and to close on open hole once each trip to test proper functioning.

Additional information:

- * The Pictured Cliffs formation will be completed.
- * Anticipated pore pressure for the Pictured Cliffs is 500 psi.
- * This gas is dedicated.
- * The southeast quarter of Section 21 is dedicated to the Pictured Cliffs.

Eric J. Giles

Drilling Engineer

10/1/01

Date