

UNITED STATES
DEPARTMENT OF THE INTERIOR
BUREAU OF LAND MANAGEMENT

APPLICATION FOR PERMIT TO DRILL, DEEPEN, OR PLUG BACK

1a. Type of Work DRILL	5. Lease Number NM-03465 Unit Reporting Number
1b. Type of Well GAS	6. If Indian, All. or Tribe
2. Operator BURLINGTON RESOURCES Oil & Gas Company	7. Unit Agreement Name 18471
3. Address & Phone No. of Operator PO Box 4289, Farmington, NM 87499 (505) 326-9700	8. Farm or Lease Name Hudson A D 9. Well Number 1R
4. Location of Well 1035' FNL, 900' FEL Latitude 36° 33.0'N, Longitude 107° 48.3'W	10. Field, Pool, Wildcat Fulcher Kutz Pictured Cliffs 11. Sec., Twn, Rge, Mer. (NMPM) A Sec. 29, T-27-N, R-9-W API # 30-045-30868
14. Distance in Miles from Nearest Town 23.6 miles to inter. Hwy 550 & 64 in Bloomfield	12. County San Juan 13. State NM
15. Distance from Proposed Location to Nearest Property or Lease Line 900'	
16. Acres in Lease	17. Acres Assigned to Well 160 NE/4
18. Distance from Proposed Location to Nearest Well, Drlg, Compl, or Applied for on this Lease 120'	
19. Proposed Depth 2316'	20. Rotary or Cable Tools Rotary
21. Elevations (DF, FT, GR, Etc.) 6289' GR	22. Approx. Date Work will Start
23. Proposed Casing and Cementing Program See Operations Plan attached	
24. Authorized by: <i>Beggy Cole</i> Regulatory/Compliance Supervisor	Date 9-28-01

PERMIT NO. _____ APPROVAL DATE _____
APPROVED BY: *[Signature]* TITLE AFM DATE 11/15/01

Archaeological Report to be submitted
Threatened and Endangered Species Report to be submitted

NOTE: This format is issued in lieu of U.S. BLM Form 3160-3

Title 18 U.S.C. Section 1001, makes it a crime for any person knowingly and willfully to make to any department or agency of the United States any false, fictitious or fraudulent statements or presentations as to any matter within its jurisdiction.

HOLD C104 FOR Change in State: Hudson #1

DISTRICT I
1625 N. French Dr., Hobbs, N.M. 88240

DISTRICT II
811 South First, Artesia, N.M. 88210

DISTRICT III
1000 Rio Brazos Rd., Aztec, N.M. 87410

DISTRICT IV
2040 South Pacheco, Santa Fe, NM 87505

State of New Mexico
Energy, Minerals & Natural Resources Department

OIL CONSERVATION DIVISION

2040 South Pacheco
Santa Fe, NM 87505

Form C-102
Revised August 15, 2000

Submit to Appropriate District Office
State Lease - 4 Copies
Fee Lease - 3 Copies

☐ AMENDED REPORT

WELL LOCATION AND ACREAGE DEDICATION PLAT

API Number 30-045- 30868		Pool Code 77200	Pool Name Fulcher Kutz Pictured Cliffs
Property Code 7136 18471	Property Name HUDSON A D		Well Number 1R
OGRIID No. 14538	Operator Name BURLINGTON RESOURCES OIL & GAS, INC.		Elevation 6289'

¹⁰ Surface Location

UL or lot no.	Section	Township	Range	Lot Idn	Feet from the	North/South line	Feet from the	East/West line	County
A	29	27-N	9-W		1035	NORTH	900	EAST	SAN JUAN

¹¹ Bottom Hole Location If Different From Surface

UL or lot no.	Section	Township	Range	Lot Idn	Feet from the	North/South line	Feet from the	East/West line	County
Dedicated Acres NE/4 160			Joint or Infill		Consolidation Code		Order No.		

NO ALLOWABLE WILL BE ASSIGNED TO THIS COMPLETION UNTIL ALL INTERESTS HAVE BEEN CONSOLIDATED
OR A NON-STANDARD UNIT HAS BEEN APPROVED BY THE DIVISION

16		FD U.S.G.L.O. BC. 1947	N 89-32-18 W 2622.13' (M)	FD U.S.G.L.O. BC. 1947	17 OPERATOR CERTIFICATION I hereby certify that the information contained herein is true and complete to the best of my knowledge and belief. <u>Peggy Cole</u> Signature Peggy Cole Printed Name Regulatory Supervisory Title 9.28.01 Date	
			1035'	900'		
			411'	269'		
LAT. 36-33.0 N LONG. 107-48.3 W.		USA NM-03465		5217.59' (M)		
29				S 00-08-58 W		
				FD U.S.G.L.O. BC. 1947		
				18 SURVEYOR CERTIFICATION I hereby certify that the well location shown on this plat was plotted from field notes of actual surveys made by me or under my supervision, and that the same is true and correct to the best of my belief. 5-16-01 Date of Survey Signature and Seal of Professional Surveyor: ROY A. RUSH REGISTERED PROFESSIONAL LAND SURVEYOR 8894 Certificate Number		

BURLINGTON RESOURCES OIL & GAS, INC.

HUDSON A D #1R

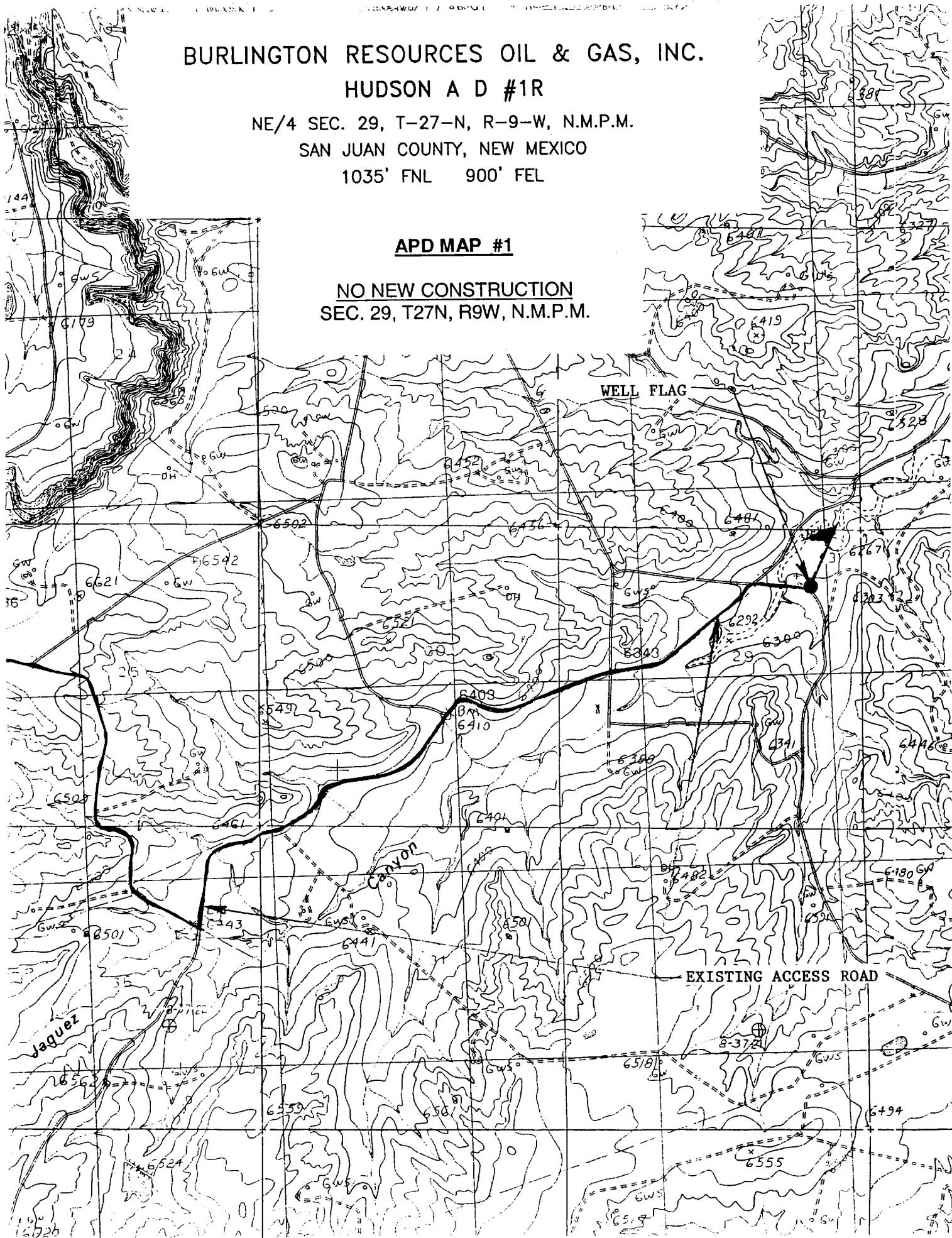
NE/4 SEC. 29, T-27-N, R-9-W, N.M.P.M.

SAN JUAN COUNTY, NEW MEXICO

1035' FNL 900' FEL

APD MAP #1

NO NEW CONSTRUCTION
SEC. 29, T27N, R9W, N.M.P.M.



OPERATIONS PLAN

Well Name: Hudson A D #1R
Location: 1035'FNL, 900'FEL, Section 29, T-27-N, R-9-W
San Juan County, New Mexico
Latitude 36° 33.0'N, Longitude 107° 48.3'W
Formation: Fulcher Kutz Pictured Cliffs
Elevation: 6289'GR

Formation:	Top	Bottom	Contents
Surface	San Jose	1229'	
Ojo Alamo	1229'	1361'	aquifer
Kirtland	1361'	1733'	gas
Fruitland	1733'	2116'	gas
Pictured Cliffs	2116'		gas
Total Depth	2316'		

Logging Program: cased hole - CBL/GR/CCL TD to surface

Coring Program: None

Mud Program:

<u>Interval</u>	<u>Type</u>	<u>Weight</u>	<u>Vis.</u>	<u>Fluid Loss</u>
0- 120'	Spud	8.4-9.0	40-50	no control
120-2316'	FW	8.4-9.0	32-45	no control

Casing Program (as listed, equivalent, or better):

<u>Hole Size</u>	<u>Depth Interval</u>	<u>Csg.Size</u>	<u>Wt.</u>	<u>Grade</u>
9 7/8"	0 - 120'	7"	20#	J-55
6 1/4"	0 - 2316'	2 7/8"	6.5#	J-55

Float Equipment: 7" surface casing - saw tooth guide shoe.
Centralizers will be run in accordance with Onshore Order #2.

2 7/8" production casing - float shoe on bottom. Three centralizers run every other joint above shoe. Seven centralizers run every 3rd joint to the base of the Ojo Alamo @ 1361'. Two turbolizing type centralizers - one below and one into the base of the Ojo Alamo @ 1361'. Standard centralizers thereafter every fourth joint up to the base of the surface pipe.

Wellhead Equipment: 7" x 2 7/8" 2000 psi screw on independent wellhead.

Cementing:

7" surface casing - cement with 27 sx Class A, B Portland Type I, II cement (32 cu.ft. of slurry, bring cement to surface through 3/4" line). WOC 8 hrs. Test casing to 600 psi for 30 minutes.

2 7/8" production casing - Lead w/307 sx Premium Lite cement w/3% calcium chloride, 1/4 pps flocele, 5 pps LCM-1, 0.4% FL-52, and 0.4% SMS. Tail w/90 sx Type III cement w/1% calcium chloride, 1/4 pps flocele, and 0.2% FL-52 (778 cu.ft. of slurry, 100% excess to circulate to surface).

Note: If open hole logs are run, cement volumes will be based on 25% excess over caliper volumes.

BOP and tests:

Surface to TD - 11" 2000 psi (minimum double gate BOP stack (Reference Figure #1). Prior to drilling out surface casing, test rams to 600 psi/30 min.

Completion - 7 1/16" 2000 psi (minimum) double gate BOP stack (Reference Figure #2). Prior to completion operations, test rams and casing to 2000 psi/15 min.

From surface to TD - choke manifold (Reference Figure #3).

Pipe rams will be actuated to least once each day and blind rams actuated once each trip to test proper functioning. An upper kelly cock valve with handle and drill string safety valves to fit each drill string will be maintained and available on the rig floor.

BOP and tests (If a coiled tubing drilling (CTD) rig is utilized.):

Surface to TD: 7-1/16" 2000 psi (minimum) Torus annular BOP stack (Reference Figure #1b). Prior to drilling out surface casing, test annular BOP to 600psi/30 min.

Completion: 7-1/16" 2000 psi (minimum) double gate BOP stack (Reference Figure #2). Prior to completion operations, test blind rams and casing to 1500 psi for 30 minutes; all pipe rams and casing to 1500 psi for 30 minutes each. **Same as in original APD operations plan.**

From surface to TD: choke manifold (Reference Figure #3). **Same as in original APD operations plan.**

The annular BOP will be actuated to close on drill pipe (coiled tubing) at least once each day and to close on open hole once each trip to test proper functioning.

Additional information:

- * The Pictured Cliffs formation will be completed.
- * Anticipated pore pressure for the Pictured Cliffs is 500 psi.
- * This gas is dedicated.
- * The northeast quarter of Section 29 is dedicated to the Pictured Cliffs.

Eric J. Giles
Drilling Engineer

10/1/01
Date