

UNITED STATES
DEPARTMENT OF THE INTERIOR
BUREAU OF LAND MANAGEMENT

APPLICATION FOR PERMIT TO DRILL OR DEEPEN

1a. TYPE OF WORK

DRILL ☒DEEPEN ☐

b. TYPE OF WELL

OIL
WELL ☐GAS
WELL ☒OTHER ☐SINGLE
ZONE ☒MULTIPLE
ZONE ☐

2. NAME OF OPERATOR

Cross Timbers Operating Company

3. ADDRESS AND TELEPHONE NO.

2700 Farmington Ave., Bldg. K. Ste 1 Farmington, NM 87401

4. LOCATION OF WELL (Report location clearly and in accordance with any State requirements)

At surface

1,390' FNL & 1.165' FWL

At proposed prod. zone

14. DISTANCE IN MILES AND DIRECTION FROM NEAREST TOWN OR POST OFFICE*

This well is located approx 23 southeast of the Bloomfield NM post office

15. DISTANCE FROM PROPOSED*
LOCATION TO NEAREST
PROPERTY OR LEASE LINE, FT.

(Also to nearest drlg. unit line, if any) 1,165'

18. DISTANCE FROM PROPOSED LOCATION*
TO NEAREST WELL, DRILLING, COMPLETED,
OR APPLIED FOR, ON THIS LEASE, FT.

800'

16. NO. OF ACRES IN LEASE

275.35

19. PROPOSED DEPTH

6850'

17. NO. OF ACRES ASSIGNED
TO THIS WELL

275.35

20. ROTARY OR CABLE TOOLS

0-6850' Rotary Tools

21. ELEVATIONS (Show whether DF, RT, GR, etc.)

6057' Ground Level

22. APPROX. DATE WORK WILL START*

Dec. 2001

23.

PROPOSED CASING AND CEMENTING PROGRAM

SIZE OF HOLE	GRADE SIZE OF CASING	WEIGHT PER FOOT	SETTING DEPTH	QUANTITY OF CEMENT
12-1/4"	8-5/8" J-55	24 #/ft	+350'	+ 245 sx c1 B cmt
7-7/8"	4-1/2" J-55	10.5 #/ft	+6850'	+ 700 sx cmt

This section is subject to technical and
procedural review pursuant to 43 CFR 3165.3
and appeal pursuant to 43 CFR 3165.4.

Cross Timbers plans to drill the above mentioned well as described in the enclosed Surface Use
Program.

ALL INFORMATION CONTAINED HEREIN IS
SUBJECT TO COMPLIANCE WITH APPLICABLE
"GENERAL REQUIREMENTS"

IN ABOVE SPACE DESCRIBE PROPOSED PROGRAM: If proposal is to deepen, give data on present productive zone and proposed new productive zone. If proposal is to drill or deepen directionally, give pertinent data on subsurface locations and measured and true vertical depths. Give blowout prevention program, if any.

24.

SIGNED

TITLE Drilling Engineer

DATE 10/30/01

(This space for Federal or State office use)

PERMIT NO.

APPROVAL DATE

Application approval does not warrant or certify that the applicant holds legal or equitable title to those rights in the subject lease which would entitle the applicant to conduct operations thereon.

CONDITIONS OF APPROVAL, IF ANY:

APPROVED BY

TITLE

DATE

Title 18 U.S.C. Section 1001, makes it a crime for any person knowingly and willfully to make to any department or agency of the United States any false, fictitious or fraudulent statements or representations as to any matter within its jurisdiction.

DISTRICT I
P.O. Box 1980, Hobbs, N.M. 88241-1980

DISTRICT II
P.O. Drawer DD, Artesia, N.M. 88211-0719

DISTRICT III
1000 Rio Brazos Rd., Aztec, N.M. 87410

DISTRICT IV
PO Box 2088, Santa Fe, NM 87504-2088

State of New Mexico
Energy, Minerals & Natural Resources Department

OIL CONSERVATION DIVISION

P.O. Box 2088
Santa Fe, NM 87504-2088

Form C-102
Revised February 21, 1994

Instructions on back
Submit to Appropriate District Office
State Lease - 4 Copies
Fee Lease - 3 Copies

☐ AMENDED REPORT

WELL LOCATION AND ACREAGE DEDICATION PLAT

¹ API Number 30-045-30894		² Pool Code 71599		³ Pool Name BASIN DAKOTA	
⁴ Property Code 22702		⁵ Property Name FEDERAL "H"			⁶ Well Number 1E
⁷ GRID No. 167067		⁸ Operator Name XTO ENERGY INC.			⁹ Elevation 6057'

¹⁰ Surface Location

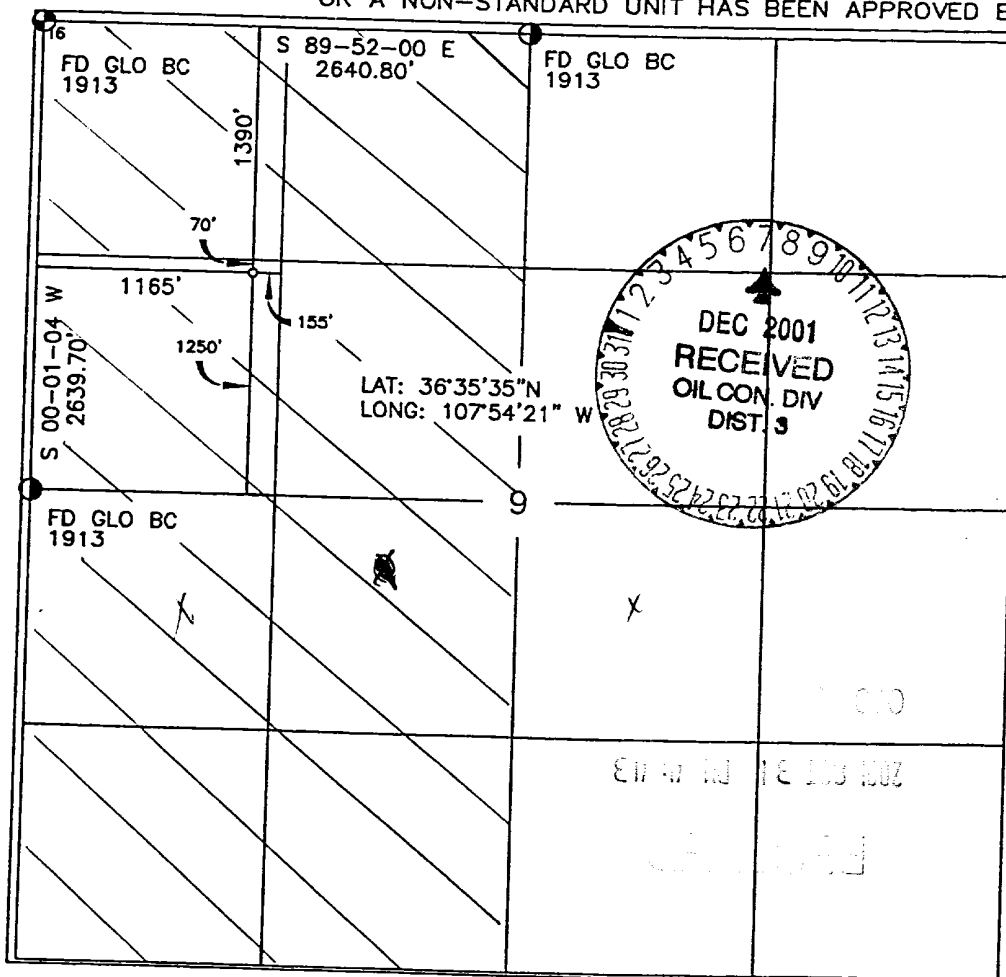
UL or lot no. E	Section 9	Township 27-N	Range 10-W	Lot Idn	Feet from the 1390	North/South line NORTH	Feet from the 1165	East/West line WEST	County SAN JUAN
--------------------	--------------	------------------	---------------	---------	-----------------------	---------------------------	-----------------------	------------------------	--------------------

¹¹ Bottom Hole Location If Different From Surface

UL or lot no.	Section	Township	Range	Lot Idn	Feet from the	North/South line	Feet from the	East/West line	County
---------------	---------	----------	-------	---------	---------------	------------------	---------------	----------------	--------

¹² Dedicated Acres 320 W/ 295 / 2		¹³ Joint or Infill I	¹⁴ Consolidation Code	¹⁵ Order No.
---	--	------------------------------------	----------------------------------	-------------------------

NO ALLOWABLE WILL BE ASSIGNED TO THIS COMPLETION UNTIL ALL INTERESTS HAVE BEEN CONSOLIDATED
OR A NON-STANDARD UNIT HAS BEEN APPROVED BY THE DIVISION



¹⁷ OPERATOR CERTIFICATION

I hereby certify that the information contained herein is true and complete to the best of my knowledge and belief

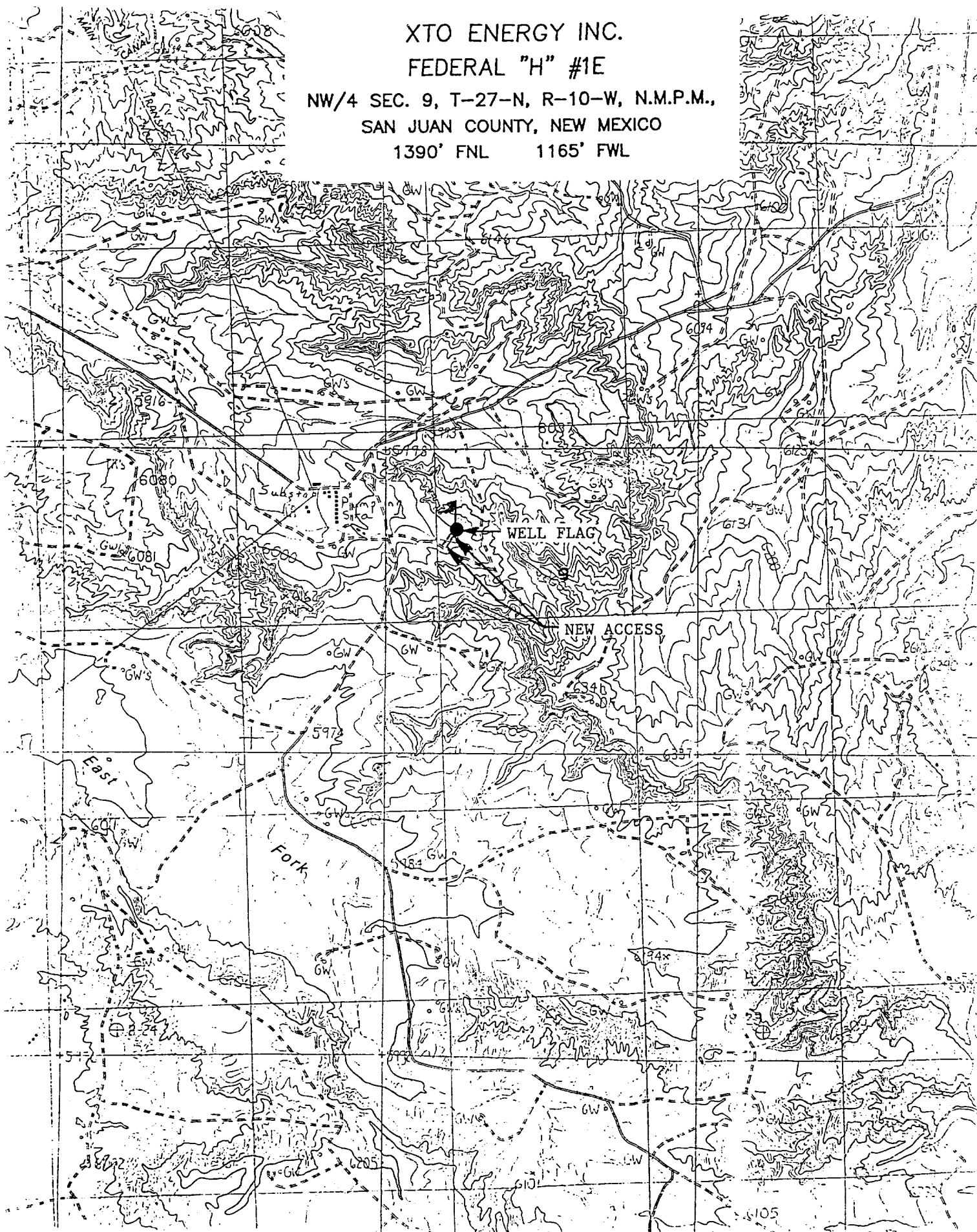
Signature
JEFFREY W PATTON
Printed Name
DRILLING ENGINEER
Title
Date
10-26-01

¹⁸ SURVEYOR CERTIFICATION

I hereby certify that the well location shown on this plat was plotted from field notes of actual surveys made by me or under my supervision and that the same is true and correct to the best of my belief.

Date of Survey
Signature of Registered Professional Surveyor
8894
Certificate Number

1390' FNL 1165' FWL



4. CEMENT PROGRAM (Slurry design may change slightly, but the plan is to circulate cement to surface on both casing strings):

A. Surface: 8-5/8", 24#, J-55, STC casing to be set at $\pm 350'$.

245 sx of Class "B" cement containing 2% CaCl_2 , 1/4 pps celloflake, mixed at 15.6 ppg, 1.18 ft^3/sk , & 5.20 gal wtr/sk.

Total slurry volume is 289 ft^3 , 100% excess of calculated annular volume to 350'.

B. Production: 4-1/2", 10.5#, J-55, STC casing to be set at $\pm 6,850'$.

500 sx of Lite-Crete cement (proprietary blend) containing 1/4 pps celloflake mixed at 9.5 ppg, 2.52 ft^3/sk , 11.50 gal wtr/sx followed by 200 sx 50/50 class "G" with poz, 6 % gel, 1/4#/sx cellofalke, 0.2% dispersant & 0.2% fluid loss additive mixed at 13.0 ppg, 1.42 cuft/sx, 9.85 gal/sx.

Total estimated slurry volume for the 4-1/2" production casing is 1,555 ft^3 (no excess).

Note: The slurry design may change slightly based upon actual conditions. Final cement volumes will be determined from the caliper logs plus 30%. It will be attempted to circulate cement to the surface.

5. LOGGING PROGRAM:

A. Mud Logger: The mud logger will come on at 5,300' and will remain on the hole until TD. The mud will be logged in 10' intervals.

B. Open Hole Logs as follows: Run Array Induction/SFL/GR/SP fr/TD to the bottom of the surface csg. Run Neutron/Lithodensity/Pe/GR/Cal from TD to 5,200 and 3,100' to 2,600'. FMI log will be run from $\pm 6,800'$ to 6,300'.

BOP SCHEMATIC FOR DRILLING OPERATIONS CLASS 1 (2M) NORMAL PRESSURE

TESTING PROCEDURE

1. Test BOP after installation:

Pressure test BOP to 200-300
psig (low pressure) for 5 min.

Test BOP to Working Press or
to 70% internal yield of surf csg
(10 min).

2. Test operation of (both) rams on every trip.

3. Check and record Accumulator pressure on every tour.

4. Re-pressure test BOP stack after changing out rams.

5. Have kelly cock valve with handle available.

6. Have safety valve and subs to fit all sizes of drill string.

