

UNITED STATES  
DEPARTMENT OF THE INTERIOR  
BUREAU OF LAND MANAGEMENT

SUBMIT IN TRIPLICATE\*  
(Other instructions on  
reverse side)

FORM APPROVED  
OMB NO. 1004-0136  
Expires: February 28, 1995

APPLICATION FOR PERMIT TO DRILL OR DEEPEN

1a. TYPE OF WORK

DRILL ☒

DEEPEN ☐

b. TYPE OF WELL

OIL  
WELL ☐

GAS  
WELL ☒

OTHER ☐

SINGLE  
ZONE ☒

MULTIPLE  
ZONE ☐

2. NAME OF OPERATOR

XTO  
Cross Timbers Operating Company

3. ADDRESS AND TELEPHONE NO.

2700 Farmington Ave., Bldg. K. Ste 1 Farmington, NM 87401

4. LOCATION OF WELL (Report location clearly and in accordance with any State requirements.)

At surface

1,520' FNL & 1,930' FWL Sec 26, T27N, R08W

At proposed prod. zone

5. LEASE DESIGNATION AND SERIAL NO.

SF - 078480

6. IF INDIAN, ALLOTTEE OR TRIBE NAME

7. UNIT AGREEMENT NAME

8. FARM OR LEASE NAME, WELL NO.

Dawson Federal #1C

9. API WELL NO.

30-045-31018

10. FIELD AND POOL, OR WILDCAT

Blanco Mesaverde

11. SEC., T., R., M. OR BLK.  
AND SURVEY OR AREA

Sec 26, T27N, R08W

12. COUNTY OR PARISH

San Juan

13. STATE

NM

14. DISTANCE IN MILES AND DIRECTION FROM NEAREST TOWN OR POST OFFICE\*

Approx 24 air miles south down Largo Canyon from the Blanco NM Post Office

15. DISTANCE FROM PROPOSED\*

LOCATION TO NEAREST

PROPERTY OR LEASE LINE, FT.

(Also to nearest drlg. unit line, if any) 766'

16. NO. OF ACRES IN LEASE

320

17. NO. OF ACRES ASSIGNED  
TO THIS WELL

320

1 1/2

18. DISTANCE FROM PROPOSED LOCATION\*

TO NEAREST WELL, DRILLING, COMPLETED,

OR APPLIED FOR, ON THIS LEASE, FT.

1,300'

19. PROPOSED DEPTH

4,875'

20. ROTARY OR CABLE TOOLS

0'-4,875' w/Rotary Tools

21. ELEVATIONS (Show whether DF, RT, GR, etc.)

5,974' Ground Level

22. APPROX. DATE WORK WILL START\*

Summer 2002

23

PROPOSED CASING AND CEMENTING PROGRAM

SIZE OF HOLE	GRADE SIZE OF CASING	WEIGHT PER FOOT	SETTING DEPTH	QUANTITY OF CEMENT
<u>12-1/4"</u>	<u>8-5/8", J-55</u>	<u>24#</u>	<u>365'</u>	<u>160 sx Type III</u>
<u>7-7/8"</u>	<u>4-1/2", J-55</u>	<u>10.5#</u>	<u>4,875'</u>	<u>675 sx Premium Lite FM</u>

This action is subject to technical and  
procedural review pursuant to 43 CFR 3165.8  
and appeal pursuant to 43 CFR 3165.4.

XTO Energy Inc. plans to drill the above mentioned well as described in the enclosed Surface Use  
Program.

DRILLING OPERATIONS AUTHORIZED ARE  
SUBJECT TO COMPLIANCE WITH ATTACHED  
"GENERAL REQUIREMENTS"

The pipeline ROW is also enclosed with this APD.

IN ABOVE SPACE DESCRIBE PROPOSED PROGRAM: If proposal is to deepen, give data on present productive zone and proposed new productive zone. If proposal is to drill or  
deepen directionally, give pertinent data on subsurface locations and measured and true vertical depths. Give blowout preventer program, if any.

24.

SIGNED

John W. Patton

TITLE

Drilling Engineer

DATE

3/04/02

(This space for Federal or State office use)

PERMIT NO.

APPROVAL DATE

4/8/02

Application approval does not warrant or certify that the applicant holds legal or equitable title to those rights in the subject lease which would entitle the applicant to conduct operations thereon.

CONDITIONS OF APPROVAL, IF ANY

/s/ David J. Mankiewicz

APPROVED BY

TITLE

AFM

DATE

4/8/02

\*See Instructions On Reverse Side

Title 18 U.S.C. Section 1001, makes it a crime for any person knowingly and willfully to make to any department or agency of the United States any false,  
fictitious or fraudulent statements or representations as to any matter within its jurisdiction.

NMCCD

DISTRICT I  
1625 N. French Dr., Hobbs, N.M. 88240

State of New Mexico  
Energy, Minerals & Natural Resources Department

Form C-102  
Revised August 15, 2000

DISTRICT II  
811 South First, Artesia, N.M. 88210

Submit to Appropriate District Office  
State Lease - 4 Copies  
Fee Lease - 3 Copies

DISTRICT III  
1000 Rio Brazos Rd., Aztec, N.M. 87410

OIL CONSERVATION DIVISION

2040 South Pacheco  
Santa Fe, NM 87505

☐ AMENDED REPORT

DISTRICT IV  
2040 South Pacheco, Santa Fe, NM 87505

WELL LOCATION AND ACREAGE DEDICATION PLAT

<sup>1</sup> API Number 30-045-31018		<sup>2</sup> Pool Code 72319		<sup>3</sup> Pool Name BLANCO NIEVAVERDE	
<sup>4</sup> Property Code 23602		<sup>5</sup> Property Name DAWSON FEDERAL			<sup>6</sup> Well Number 1C
<sup>7</sup> OGRID No. 167067		<sup>8</sup> Operator Name XTO ENERGY INC.			<sup>9</sup> Elevation 5974'

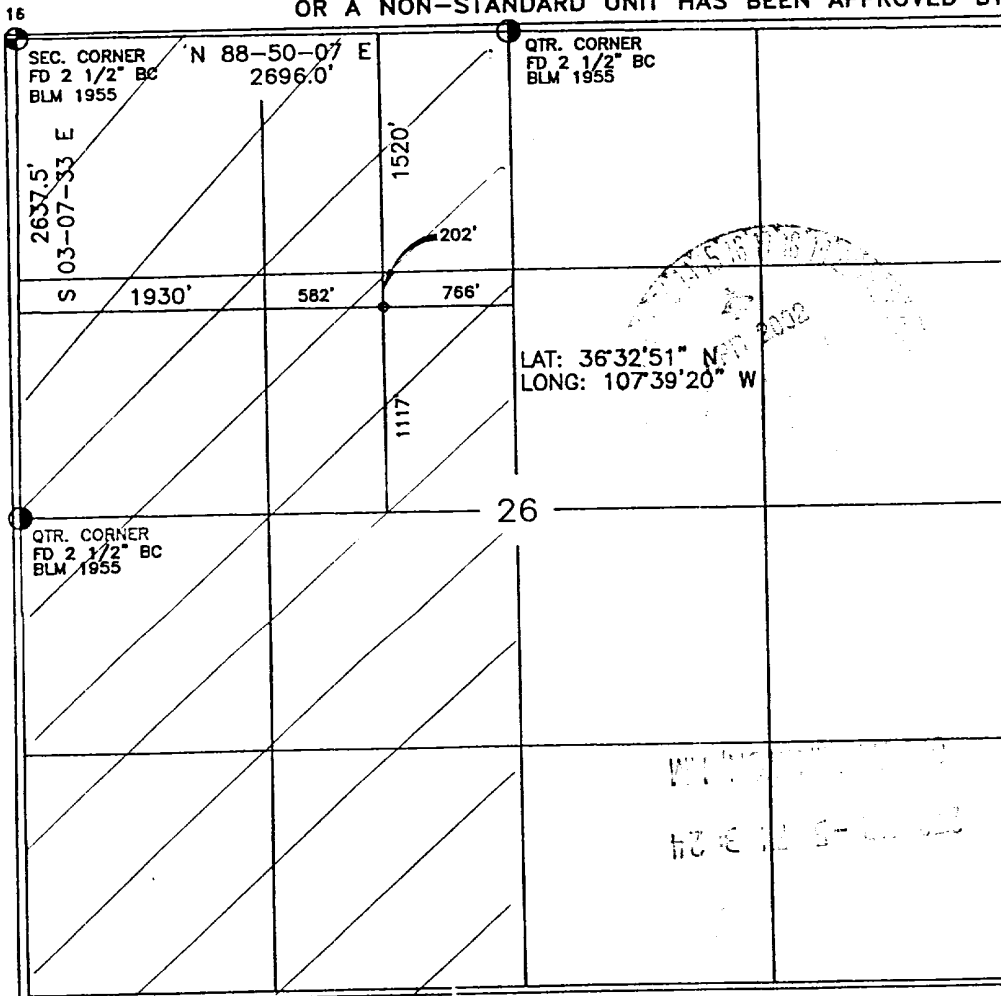
<sup>10</sup> Surface Location

UL or lot no.	Section	Township	Range	Lot Idn	Feet from the	North/South line	Feet from the	East/West line	County
F	26	27-N	8-W		1520	NORTH	1930	WEST	SAN JUAN

<sup>11</sup> Bottom Hole Location If Different From Surface

UL or lot no.	Section	Township	Range	Lot Idn	Feet from the	North/South line	Feet from the	East/West line	County
<sup>12</sup> Dedicated Acres 320 W/2					<sup>13</sup> Joint or Infill I		<sup>14</sup> Consolidation Code		<sup>15</sup> Order No.

NO ALLOWABLE WILL BE ASSIGNED TO THIS COMPLETION UNTIL ALL INTERESTS HAVE BEEN CONSOLIDATED  
OR A NON-STANDARD UNIT HAS BEEN APPROVED BY THE DIVISION



17 OPERATOR CERTIFICATION

I hereby certify that the information contained herein  
is true and complete to the best of my knowledge and  
belief.

Signature

*JW Patton*

JEFFREY W PATTON

Printed Name

DRILLING ENGINEER

Title

2-4-02

Date

18 SURVEYOR CERTIFICATION

I hereby certify that the well location shown on this plat  
was plotted from field notes of actual surveys made by  
me or under my supervision, and that the same is true  
and correct to the best of my belief.

Date of Survey

Signature and Seal of Professional Surveyor

8894

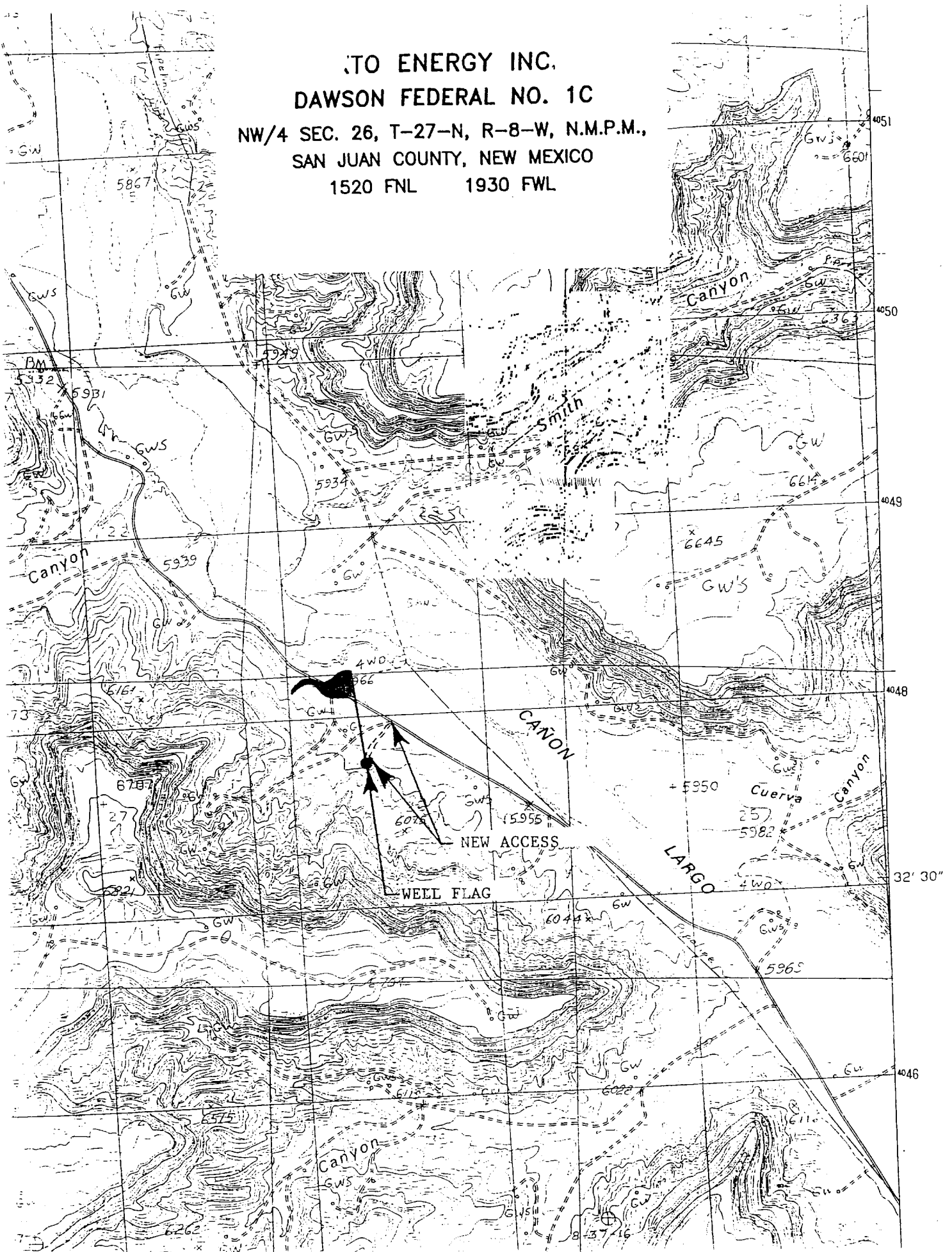
PROFESSIONAL LAND SURVEYOR

8894

Certificate Number

TO ENERGY INC.  
DAWSON FEDERAL NO. 1C

NW/4 SEC. 26, T-27-N, R-8-W, N.M.P.M.,  
SAN JUAN COUNTY, NEW MEXICO  
1520 FNL 1930 FWL



# XTO ENERGY INC.

Dawson Federal #1C

APD Data

March 4, 2002

Location: 1,520' FNL & 1,930' FWL, Sec 26, T27N, R08W

County: San Juan State: New Mexico

PROJECTED TOTAL DEPTH: ±4,875'  
GR ELEV: 5,974'

OBJECTIVE: Mesaverde  
Est KB ELEV: 5,986 (12' AGL)

## 1. MUD PROGRAM:

INTERVAL	0' to 270'	270' to 3,500'	3,500' to TD
HOLE SIZE	12-1/4"	7-7/8"	7-7/8"
MUD TYPE	FW/Spud Mud	FW/Polymer	LSND
WEIGHT	8.6-9.0	8.4-8.8	8.6-9.0
VISCOSITY	28-32	28-32	45-60
WATER LOSS	NC	NC	8-10

Remarks: Use fibrous materials as needed to control seepage and lost circulation. Pre-treat with 20% LCM @ 3,500'. Pump high viscosity sweeps as needed for hole cleaning. Raise viscosity (>85 sec) at TD for logging. Reduce viscosity after logging for cementing purposes.

## 2. CASING PROGRAM:

Surface Casing: 8-5/8" casing to be set at ± 270' in 8.8 ppg mud.

Interval	Length	Wt	Gr	Cplg	Coll Rating (psi)	Burst Rating (psi)	Jt Str (M-lbs)	ID (in)	Drift (in)	SF Coll	SF Burst	SF Ten
0'-270'	270'	24#	J-55	STC	1370	2950	244	8.097	7.972	7.32	7.95	29.39

Production Casing: 4-1/2" casing to be set at TD in 9.0 ppg mud.

Interval	Length	Wt	Gr	Cplg	Coll Rating (psi)	Burst Rating (psi)	Jt Str (M-lbs)	ID (in)	Drift (in)	SF Coll	SF Burst	SF Ten
0'-TD	4,875'	10.5#	J-55	STC	4010	4790	132	4.052	3.875	1.66	1.33	2.44

## 3. WELLHEAD:

- Casing Head: Larkin Fig 92 (or equivalent), 9" nominal, 2,000 psig WP (4,000 psig test) with 8-5/8" 8rnd thread on bottom and 11-3/4" 8rnd thread on top.
- Tubing Head: Larkin Fig 612 (or equivalent), 6.456" nominal, 2,000 psig WP (4,000 psig test), 4-1/2" 8rnd female thread on bottom, 8-5/8" 8rnd thread on top.

**4. CEMENT PROGRAM (Slurry design may change slightly, but the plan is to circulate cement to surface on both casing strings):**

A. Surface: 8-5/8", 24#, J-55, STC casing to be set at  $\pm 270'$ .

Lead: 160 sx of "Type III" cement containing 3%  $\text{CaCl}_2$ , ¼ pps celloflake, mixed at 14.5 ppg, 1.39  $\text{ft}^3/\text{sk}$ , & 6.50 gal wtr/sk.

*Total slurry volume is 222  $\text{ft}^3$ , 100% excess of calculated annular volume to 270'.*

B. Production: 4-1/2", 10.5#, J-55, STC casing to be set at  $\pm 4,875'$ .

Lead: 525 sx of Premium Lite FM (65/35/6) cement containing 2% KCl, ¼ pps celloflake, 2-4% Phenoseal mixed at 11.9 ppg, 2.39  $\text{ft}^3/\text{sk}$ , 15.60 gal wtr/sx.

Tail: 150 sx of Premium Lite HS (65/35/6) cement containing 2% KCl, ¼ pps celloflake, 0.5% Fluid loss, 0.2% Dispersant mixed at 12.5 ppg, 2.01  $\text{ft}^3/\text{sk}$ , 10.71 gal wtr/sx..

*Total estimated slurry volume (including 40% excess) for the 4-1/2" production casing is 1,555  $\text{ft}^3$ .*

*Note: The slurry design may change slightly based upon actual conditions. Final cement volumes will be determined for the caliper logs plus 40%. It will be attempted to circ cement to surface.*

**5. LOGGING PROGRAM:**

A. Mud Logger: There are no plans to use a mud logger at this time.

B. Open Hole Logs as follows: Run Dual Induction/SFL/GR/SP fr/TD ( $\pm 4,875'$ ) to the bottom of the surface csg. Run CNL/LDT (Lithodensity)/GR/Cal and Pe from TD to 2,875'.

**6. FORMATION TOPS:**

Formation	Subsea Depth	Well Depth
Ojo Alamo SS	+4639'	1350'
Kirtland Shale	+4563'	1426'
Fruitland Formation	+4175'	1814'
Lower Fruitland Coal	+3917'	2072'
Pictured Cliffs SS	+3855'	2134'
Lewis Shale	+3710'	2279'
Chacra	+2980'	3009'
Cliffhouse SS	+2290'	3699'
Menefee*	+2215'	3774'
Point Lookout SS*	+1625'	4364'
Mancos Shale	+1276'	4713'
Projected TD	+1114'	4875'

\* Target Reservoir. Maximum anticipated reservoir pressure will be  $\pm 1,550$  psig.

# BOP SCHEMATIC FOR DRILLING OPERATIONS CLASS 1 (2M) NORMAL PRESSURE

## 1. Test BOP after installation:

Pressure test BOP to 200-300  
psig (low pressure) for 5 min.

Test BOP to Working Press or  
to 70% internal yield of surf csg  
(10 min).

2. Test operation of (both) rams  
on every trip.

3. Check and record Accumulator  
pressure on every tour.

4. Re-pressure test BOP stack after  
changing out rams.

5. Have kelly cock valve with handle available.

6. Have safety valve and subs to fit all sizes of  
drill string.

## TESTING PROCEDURE

