

UNITED STATES  
DEPARTMENT OF THE INTERIOR  
BUREAU OF LAND MANAGEMENT

APPLICATION FOR PERMIT TO DRILL OR DEEPEN

1a. TYPE OF WORK

DRILL ☒

DEEPEN ☐

b. TYPE OF WELL

OIL  
WELL ☐

GAS  
WELL ☒

OTHER

SINGLE  
ZONE ☐

MULTIPLE  
ZONE ☒

2. NAME OF OPERATOR

XTO Energy Inc.

3. ADDRESS AND TELEPHONE NO.

2700 Farmington Ave., Bldg. K, Ste 1 Farmington, NM 87401

4. LOCATION OF WELL (Report location clearly and in accordance with any State requirements.)  
At surface

1980' FSL & 1920' FWL Sec 17, T27N, R08W  
At proposed prod. zone

14. DISTANCE IN MILES AND DIRECTION FROM NEAREST TOWN OR POST OFFICE\*

Approx 24 air miles south down Largo Canyon from the Blanco NM Post Office

15. DISTANCE FROM PROPOSED\*

LOCATION TO NEAREST  
PROPERTY OR LEASE LINE, FT.  
(Also to nearest drlg. unit line, if any) 663' (MV)

16. NO. OF ACRES IN LEASE

+ - 2880

17. NO. OF ACRES ASSIGNED  
TO THIS WELL

320 DK, 320 MV w/ MV

18. DISTANCE FROM PROPOSED LOCATION\*  
TO NEAREST WELL, DRILLING, COMPLETED,  
OR APPLIED FOR, ON THIS LEASE, FT.

+ - 1,000'

19. PROPOSED DEPTH

7,725'

20. ROTARY OR CABLE TOOLS

0' - 7,725' w/Rotary Tools

21. ELEVATIONS (Show whether DF, RT, GR, etc.)

6,767' Ground level

22. APPROX. DATE WORK WILL START\*

Summer 2002

23.

PROPOSED CASING AND CEMENTING PROGRAM

| SIZE OF HOLE | GRADE SIZE OF CASING | WEIGHT PER FOOT | SETTING DEPTH | QUANTITY OF CEMENT                |
|--------------|----------------------|-----------------|---------------|-----------------------------------|
| 12-1/4"      | 9-5/8", H-40         | 32.3#           | 265'          | 140 sx Class "B"                  |
| 8-3/4"       | 7", J-55             | 20.0#           | 3,150'        | 275 sx Liteweight cement          |
| 6-1/4"       | 4-1/2", J-55         | 10.5#           | 7,725'        | 435 sx C1 "H" / Liteweight Cement |

This action is subject to technical and  
procedural review pursuant to 43 CFR 3165.3  
and appeal pursuant to 43 CFR 3165.4

DRILLING OPERATIONS AUTHORIZED ARE  
SUBJECT TO COMPLIANCE WITH ATTACHED  
"GENERAL REQUIREMENTS".

XTO Energy Inc. plans to drill the above mentioned well as described in the enclosed Surface Use  
Program.

Please note that the attached APD also contains the El Paso well tie flat for

RECEIVED

JUN 6 2002

BUREAU OF LAND MANAGEMENT  
FARMINGTON FIELD OFFICE

IN ABOVE SPACE DESCRIBE PROPOSED PROGRAM. If proposal is to deepen, give data on present productive zone and proposed new productive zone. If proposal is to drill or  
deepen directionally, give pertinent data on subsurface locations and measured and true vertical depths. Give blowout preventer program, if any.

SIGNED

*JW Patton*

TITLE Drilling Engineer

DATE 6/4/02

(This space for Federal or State office use)

PERMIT NO.

APPROVAL DATE

Application approval does not warrant or certify that the applicant holds legal or equitable title to those rights in the subject lease which would entitle the applicant to conduct operations thereon.

CONDITIONS OF APPROVAL, IF ANY:

/s/ Charlie Beecham

ACTING

AUG 29 2002

APPROVED BY

TITLE

DATE

\*See Instructions On Reverse Side

Title 18 U.S.C. Section 1001, makes it a crime for any person knowingly and willfully to make to any department or agency of the United States any false,  
fictitious or fraudulent statements or representations as to any matter within its jurisdiction.

NMAOCD

DISTRICT I  
1825 N. French Dr., Hobbs, N.M. 88240

DISTRICT II  
811 South First, Artesia, N.M. 88210

DISTRICT III  
1000 Rio Brazos Rd., Aztec, N.M. 87410

DISTRICT IV  
2040 South Pacheco, Santa Fe, NM 87505

State of New Mexico  
Energy, Minerals & Natural Resources Department

Form C-102  
Revised August 15, 2000

Submit to Appropriate District Office  
State Lease - 4 Copies  
Fee Lease - 3 Copies

OIL CONSERVATION DIVISION

2040 South Pacheco  
Santa Fe, NM 87505

☐ AMENDED REPORT

WELL LOCATION AND ACREAGE DEDICATION PLAT

|   |  |   |  |  |                                 |
|---|--|---|--|--|---------------------------------|
| <sup>1</sup> API Number<br>30-043-31125 |  | <sup>2</sup> Pool Code<br>71599               |  | <sup>3</sup> Pool Name<br>BASIN DAKOTA |                                 |
| <sup>4</sup> Property Code<br>22608     |  | <sup>5</sup> Property Name<br>FLORANCE        |  |  | <sup>6</sup> Well Number<br>64M |
| <sup>7</sup> OGRID No.<br>167067        |  | <sup>8</sup> Operator Name<br>XTO ENERGY INC. |  |  | <sup>9</sup> Elevation<br>6767' |

<sup>10</sup> Surface Location

| UL or lot no. | Section | Township | Range | Lot Idn | Feet from the | North/South line | Feet from the | East/West line | County   |
|---------------|---------|----------|-------|---------|---------------|------------------|---------------|----------------|----------|
| K             | 17      | 27-N     | 8-W   |         | 1980'         | SOUTH            | 1920'         | WEST           | SAN JUAN |

<sup>11</sup> Bottom Hole Location If Different From Surface

| UL or lot no.                            | Section | Township                           | Range | Lot Idn                          | Feet from the | North/South line        | Feet from the | East/West line | County |
|--|---------|------------------------------------|-------|----------------------------------|---------------|-------------------------|---------------|----------------|--------|
|  |         |                                    |       |                                  |               |                         |               |                |        |
| <sup>12</sup> Dedicated Acres<br>320 5/2 |         | <sup>13</sup> Joint or Infill<br>I |       | <sup>14</sup> Consolidation Code |               | <sup>15</sup> Order No. |               |                |        |

NO ALLOWABLE WILL BE ASSIGNED TO THIS COMPLETION UNTIL ALL INTERESTS HAVE BEEN CONSOLIDATED  
OR A NON-STANDARD UNIT HAS BEEN APPROVED BY THE DIVISION

|   |  |   |
|---|--|---|
| <p>16</p> <p>FD 3 1/4"<br/>B.L.M. BC<br/>1955</p> <p>N 00-20-27 W 5336.4' (M)</p> <p>17</p> <p>688'</p> <p>629'</p> <p>1920'</p> <p>1980'</p> <p>663'</p> <p>646'</p> <p>Br</p> <p>FD 3 1/4"<br/>B.L.M. BC<br/>1955</p> <p>S 89-24-00 E<br/>2582.8' (M)</p> <p>LAT: 36°34'22" N.<br/>LONG: 107°42'25" W.</p> <p>RECEIVED</p> <p>WILKINSON FIELD OFFICE</p>  |  | <p>17 OPERATOR CERTIFICATION</p> <p>I hereby certify that the information contained herein is true and complete to the best of my knowledge and belief</p> <p>Signature <u>Jeffrey W. Patton</u></p> <p>Printed Name <u>JEFFREY W. PATTON</u></p> <p>Title <u>DRILLING ENGINEER</u></p> <p>Date <u>6-5-02</u></p> |
| <p>18 SURVEYOR CERTIFICATION</p> <p>I hereby certify that the well location shown on this plat was plotted from field notes of actual surveys made by me or under my supervision, and that the same is true and correct to the best of my belief</p> <p>Date of Survey <u>9-17-2000</u></p> <p>Signature and Seal of Professional Surveyor <u>[Signature]</u></p> <p>Certificate Number <u>8894</u></p> |  |   |

DISTRICT I  
1825 N. French Dr., Hobbs, N.M. 88240

DISTRICT II  
811 South First, Artesia, N.M. 88210

DISTRICT III  
1000 Rio Brazos Rd., Aztec, N.M. 87410

DISTRICT IV  
2040 South Pacheco, Santa Fe, NM 87505

State of New Mexico  
Energy, Minerals & Natural Resources Department

OIL CONSERVATION DIVISION

2040 South Pacheco  
Santa Fe, NM 87505

Form C-102  
Revised August 15, 2000

Submit to Appropriate District Office  
State Lease - 4 Copies  
Fee Lease - 3 Copies

☐ AMENDED REPORT

WELL LOCATION AND ACREAGE DEDICATION PLAT

|   |   |  |
|---|---|--|
| <sup>1</sup> API Number<br>30-045-31125 | <sup>2</sup> Pool Code<br>77319               | <sup>3</sup> Pool Name<br>BLANCO MESAVERDE |
| <sup>4</sup> Property Code<br>22608     | <sup>5</sup> Property Name<br>FLORANCE        | <sup>6</sup> Well Number<br>64M            |
| <sup>7</sup> OGRID No.<br>167067        | <sup>8</sup> Operator Name<br>XTO ENERGY INC. | <sup>9</sup> Elevation<br>6767'            |

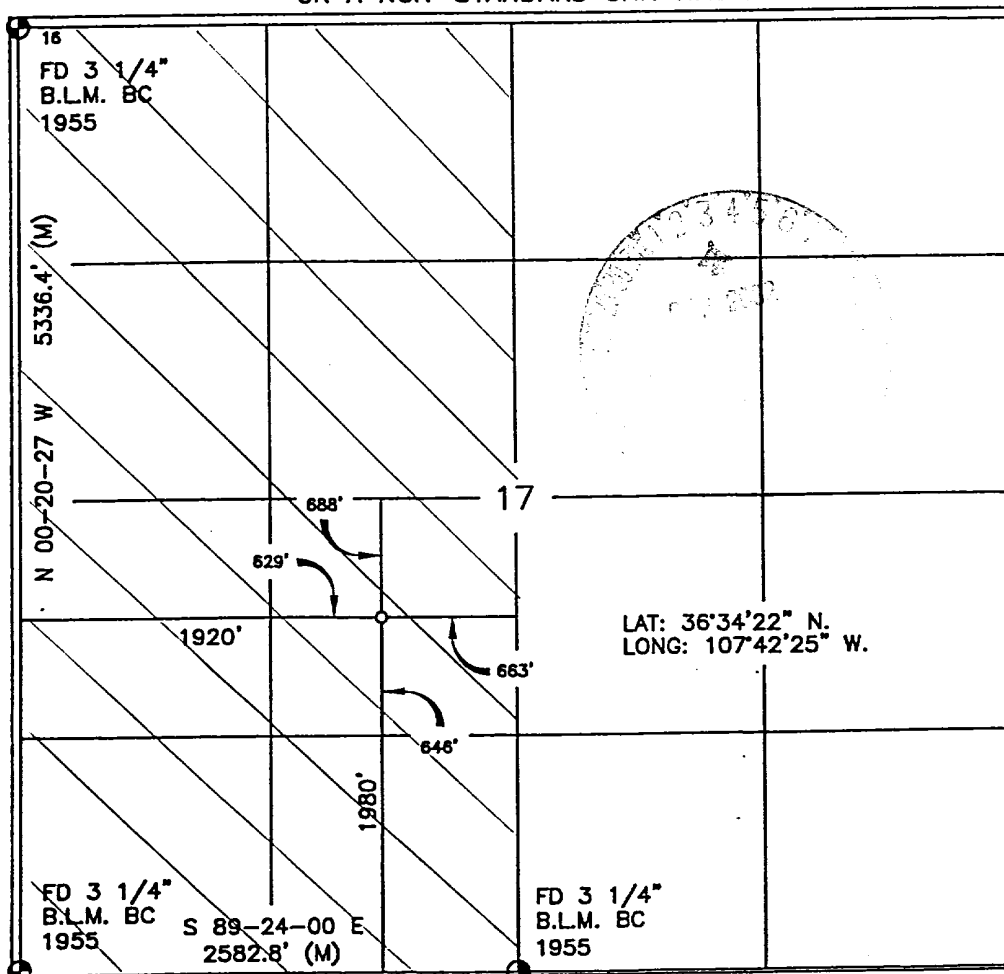
<sup>10</sup> Surface Location

| UL or lot no. | Section | Township | Range | Lot Idn | Feet from the | North/South line | Feet from the | East/West line | County   |
|---------------|---------|----------|-------|---------|---------------|------------------|---------------|----------------|----------|
| K             | 17      | 27-N     | 8-W   |         | 1980'         | SOUTH            | 1920'         | WEST           | SAN JUAN |

<sup>11</sup> Bottom Hole Location If Different From Surface

| UL or lot no.                        | Section | Township | Range                              | Lot Idn                          | Feet from the | North/South line        | Feet from the | East/West line | County |
|--------------------------------------|---------|----------|------------------------------------|----------------------------------|---------------|-------------------------|---------------|----------------|--------|
|                                      |         |          |                                    |                                  |               |                         |               |                |        |
| <sup>12</sup> Dedicated Acres<br>320 | W 1/2   |          | <sup>13</sup> Joint or Infill<br>I | <sup>14</sup> Consolidation Code |               | <sup>15</sup> Order No. |               |                |        |

NO ALLOWABLE WILL BE ASSIGNED TO THIS COMPLETION UNTIL ALL INTERESTS HAVE BEEN CONSOLIDATED  
OR A NON-STANDARD UNIT HAS BEEN APPROVED BY THE DIVISION



17 OPERATOR CERTIFICATION

I hereby certify that the information contained herein is true and complete to the best of my knowledge and belief

Signature: Jeffrey W. Patton  
Printed Name: JEFFREY W. PATTON  
Title: DRILLING ENGINEER  
Date: 6-5-02

18 SURVEYOR CERTIFICATION

I hereby certify that the well location shown on this plat was plotted from field notes of actual surveys made by me or under my supervision, and that the same is true and correct to the best of my belief.

Date of Survey: 9-17-02  
Signature and Seal of Professional Surveyor: [Signature]  
Certificate Number: 8894

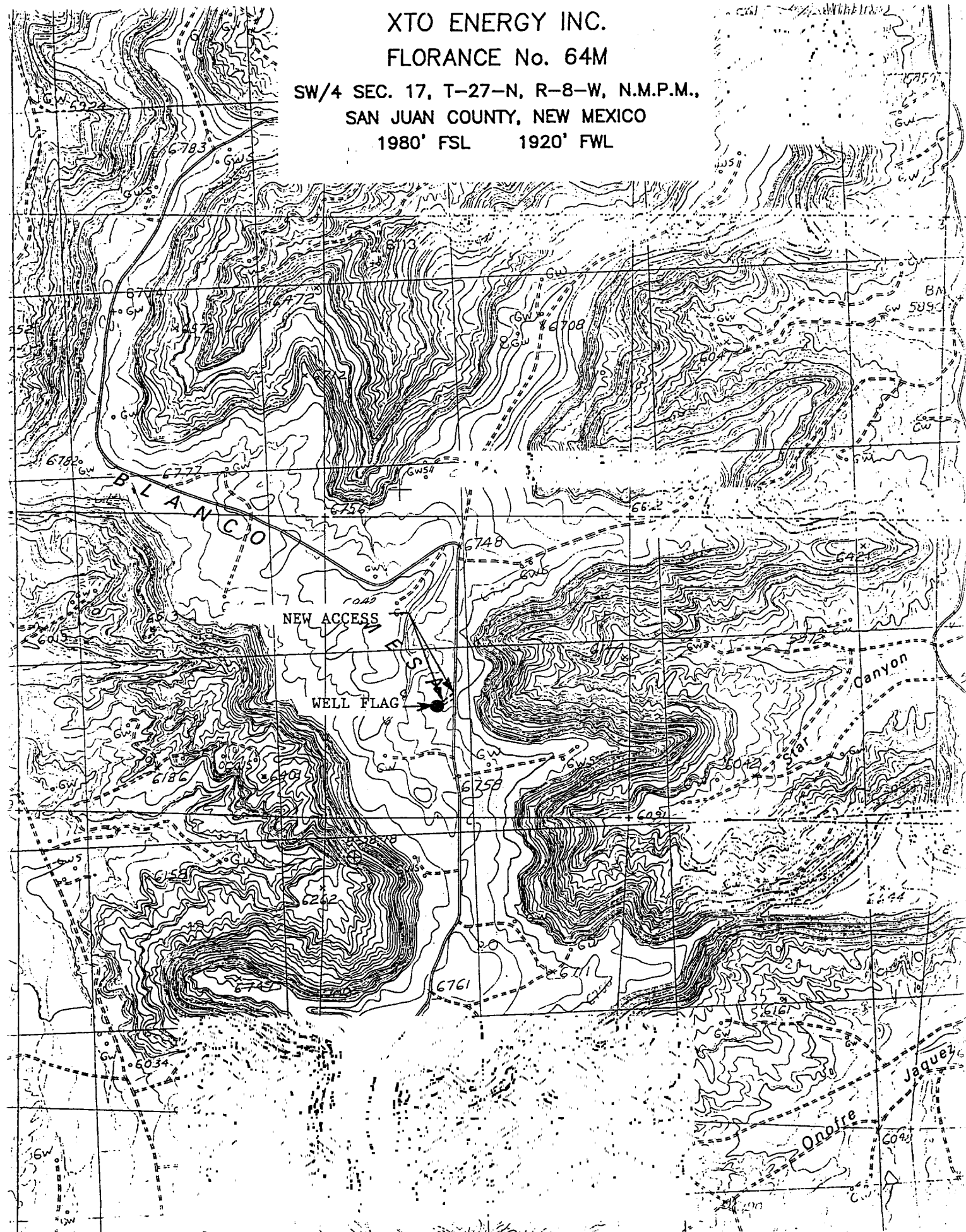
XTO ENERGY INC.

FLORANCE No. 64M

SW/4 SEC. 17, T-27-N, R-8-W, N.M.P.M.,

SAN JUAN COUNTY, NEW MEXICO

1980' FSL 1920' FWL



# XTO ENERGY INC.

Florance #64M

APD Data

June 5, 2002

Surface Location: 1,980' FSL & 1,920' FWL, Sec 17, T27N, R08W County: San Juan State: New Mexico

TOTAL DEPTH: ±7,725'

GR ELEV: 6,767'

OBJECTIVE: Dakota/Mesaverde

Est KB ELEV: 6,780' (13' AGL)

## 1. MUD PROGRAM:

| INTERVAL   | 0' to 265'    | 265' to 3,150' | 3,150' to TD |
|------------|---------------|----------------|--------------|
| HOLE SIZE  | 12-1/4"       | 8-3/4"         | 6-1/4"       |
| MUD TYPE   | FW/Native Mud | FW/Polymer     | Air/Foam     |
| WEIGHT     | 8.6-8.8       | 8.6-9.0        |              |
| VISCOSITY  | 28-32         | 29-34          |              |
| WATER LOSS | NC            | NC             |              |

Remarks: Use fibrous materials as needed to control seepage and lost circulation. Pump high viscosity sweeps as needed for hole cleaning. RU air compressors after setting the intermediate csg. Drill with air or foam to TD.

## 2. CASING PROGRAM:

Surface Casing: 9-5/8" casing to be set at ± 265' in 8.6 ppg mud

| Interval | Length | Wt    | Gr   | Cplg | Coll Rating (psi) | Burst Rating (psi) | Jt Str (M-lbs) | ID (in) | Drift (in) | SF Coll | SF Burst | SF Ten |
|----------|--------|-------|------|------|-------------------|--------------------|----------------|---------|------------|---------|----------|--------|
| 0'-265'  | 265'   | 32.3# | H-40 | STC  | 1370              | 2270               | 254            | 9.001   | 8.972      | 5.98    | 5.68     | 15.73  |

Intermediate Casing: 7" casing to be set at ±3,150' in 9.0 ppg mud.

| Interval  | Length | Wt    | Gr   | Cplg | Coll Rating (psi) | Burst Rating (psi) | Jt Str (M-lbs) | ID (in) | Drift (in) | SF Coll | SF Burst | SF Ten |
|-----------|--------|-------|------|------|-------------------|--------------------|----------------|---------|------------|---------|----------|--------|
| 0'-3,150' | 3,150' | 20.0# | J-55 | STC  | 2257              | 3740               | 234            | 6.456   | 6.331      | 1.15    | 1.31     | 2.57   |

Production Casing: 4-1/2" casing to be set at 7,725' in air.

| Interval  | Length | Wt    | Gr   | Cplg | Coll Rating (psi) | Burst Rating (psi) | Jt Str (M-lbs) | ID (in) | Drift (in) | SF Coll | SF Burst | SF Ten |
|-----------|--------|-------|------|------|-------------------|--------------------|----------------|---------|------------|---------|----------|--------|
| 0'-7,725' | 7,725' | 10.5# | J-55 | STC  | 4010              | 4790               | 132            | 4.052   | 3.927      | 1.33    | 1.20     | 1.90   |

3. **WELLHEAD:**

- A. Bradenhead: 9-5/8" x 7" 2,000 psig WP (4,000 psig test).  
Casinghead: 7" x 4-1/2" 3,000 psig WP (6,000 psig test).

4. **CEMENT PROGRAM (Slurry design may change slightly, but the plan is to circulate cement to surface on both casing strings):**

- A. Surface: 9-5/8", 32.3#, H-40, STC casing to be set at  $\pm 265'$ .

Lead: 140 sx of Class "B" (Standard) cement containing 2%  $\text{CaCl}_2$ , 1/4 pps celloflake, mixed at 15.6 ppg, 1.18  $\text{ft}^3/\text{sk}$ , & 5.20 gal wtr/sk.

*Total slurry volume is 166  $\text{ft}^3$ , 100% excess of calculated annular volume to 265'.*

- B. Intermediate: 7", 20.0#, J-55, STC casing to be set at  $\pm 3,150'$ .

Lead: 225 sx of Class "B" (Standard) cement containing  $\pm 3\%$  extender, 1/4 pps celloflake and 2%  $\text{CaCl}_2$  mixed at 11.4 ppg, 2.88  $\text{ft}^3/\text{sk}$ , 17.89 gal wtr/sx.

Tail: 50 sx of Class "B" (Standard) cement containing 1/4 pps celloflake and 2%  $\text{CaCl}_2$  mixed at 15.6 ppg, 1.18  $\text{ft}^3/\text{sk}$ , 5.20 gal wtr/sx.

*Total slurry volume is 707  $\text{ft}^3$ , circulated to surface. This value is 50% (excess) over gage hole volume.*

- C. Production: 4-1/2", 10.5#, J-55, STC casing to be set at  $\pm 7,725'$ . DV Tool @  $\pm 4,250'$ .

**First Stage:**

Lead: 135 sx of Class "H" Premium Lite High Strength (65/35/6), 1/4 pps celloflake, 2% KCl, 0.5% fluidloss, 0.2% dispersant & 2% Phenoseal mixed at 12.5 ppg, 2.01  $\text{ft}^3/\text{sk}$ , 10.12 gal wtr/sx.

Tail: 150 sx of Class "H" Premium cement containing 4% gel (extender), 1/4 pps celloflake, 0.5% fluidloss, 0.2% dispersant and 2% Phenoseal mixed at 14.7 ppg, 1.38  $\text{ft}^3/\text{sk}$ , 6.70 gal wtr/sx..

**Second Stage:**

Lead: 50 sx of Class "B" cement containing 3% extender & 1/4 pps celloflake mixed at 11.4 ppg, 2.82  $\text{ft}^3/\text{sk}$ , 17.5 gal wtr/sx.

Tail: 100 sx of Class "B" cement containing 1/4 pps celloflake and 2% Phenoseal mixed at 15.6 ppg, 1.18  $\text{ft}^3/\text{sk}$ , 5.20 gal wtr/sx..

*Total estimated slurry volume for the 4-1/2" production casing is 736  $\text{ft}^3$  for  $\pm 5,075'$  of fill. Est. TOC should be @  $\pm 2,650'$ . 35% (excess) over gage hole volume has been added to the number of sacks indicated..*

---

*Note: The slurry design may change slightly based upon actual conditions. Final cement volumes will be determined for the caliper logs plus 35%..*

**5. LOGGING PROGRAM:**

A. Mud Logger: A two man mud logging crew will come on the hole @ 3,600' and remain on the hole until TD.

B. Open Hole Logs as follows: Run Dual Induction/MSFL/GR/CAL/SP/CNL/LDT (lithodensity) from TD to the bottom of the intermediate csg (@ ±3,150' MD). Run cased hole GR/CCL from TD to surface.

**6. FORMATION TOPS:**

| Formation              | Subsea Depth | Well Depth (MD) |
|------------------------|--------------|-----------------|
| Ojo Alamo SS           | +4744'       | 2038'           |
| Kirtland Shale         | +4688'       | 2094'           |
| Farmington Sanstone    | +4591'       | 2191'           |
| Fruitland Formation    | +4143'       | 2639'           |
| Lower Fruitland Coal   | +3977'       | 2805'           |
| Pictured Cliffs SS     | +3900'       | 2882'           |
| Lewis Shale            | +3736'       | 3046'           |
| Chacra Sandstone       | +2993'       | 3789'           |
| Cliffhouse SS          | +2315'       | 4467'           |
| Menefee                | +2148'       | 4634'           |
| Point Lookout SS       | +1642'       | 5120'           |
| Mancos Shale           | +1306'       | 5476'           |
| Gallup Sandstone       | +457'        | 6325'           |
| Greenhorn Limestone    | -336'        | 7118'           |
| Graneros Shale         | -391'        | 7173'           |
| 1 <sup>st</sup> Dakota | -427'        | 7209'           |
| 2 <sup>nd</sup> Dakota | -447'        | 7229'           |
| 3 <sup>rd</sup> Dakota | -502'        | 7284'           |
| 4 <sup>th</sup> Dakota | -561'        | 7343'           |
| 5 <sup>th</sup> Dakota | -584'        | 7366'           |
| 6 <sup>th</sup> Dakota | -621'        | 7403'           |
| Burro Canyon Ss        | -678'        | 7460'           |
| Morrison               | -737'        | 7519'           |
| Projected TD           | -943'        | 7725'           |

# BOP SCHEMATIC FOR DRILLING OPERATIONS CLASS 1 (2M) NORMAL PRESSURE

## TESTING PROCEDURE

1. Test BOP after installation:  
Pressure test BOP to 200-300 psig (low pressure) for 5 min.  
Test BOP to Working Press or to 70% internal yield of surf csg (10 min).
2. Test operation of (both) rams on every trip.
3. Check and record Accumulator pressure on every tour.
4. Re-pressure test BOP stack after changing out rams.
5. Have kelly cock valve with handle available.
6. Have safety valve and subs to fit all sizes of drill string.

