

UNITED STATES  
DEPARTMENT OF THE INTERIOR  
BUREAU OF LAND MANAGEMENT

SUBMIT IN TRIPLICATE\*  
(Other instructions on  
reverse side)

FORM APPROVED  
OMB NO. 1004-0136  
Expires: February 28, 1995

APPLICATION FOR PERMIT TO DRILL OR DEEPEN

1a. TYPE OF WORK

DRILL ☒

DEEPEN ☐

b. TYPE OF WELL

OIL  
WELL ☐

GAS  
WELL ☒

OTHER

SINGLE  
ZONE ☐

MULTIPLE  
ZONE ☒

2. NAME OF OPERATOR

XTO Energy Inc.

3. ADDRESS AND TELEPHONE NO.

2700 Farmington Ave., Bldg. K. Ste 1 Farmington, NM 87401

4. LOCATION OF WELL (Report location clearly and in accordance with any State requirements.)  
At surface

1220' FSL & 910' FEL Sec 17, T27N, R08W

At proposed prod. zone

14. DISTANCE IN MILES AND DIRECTION FROM NEAREST TOWN OR POST OFFICE\*

Approx 24 air miles south down Largo Canyon from the Blanco NM Post Office

15. DISTANCE FROM PROPOSED\*

LOCATION TO NEAREST  
PROPERTY OR LEASE LINE, FT.  
(Also to nearest drg. unit line, if any) 910'

16. NO. OF ACRES IN LEASE

+ -2880

17. NO. OF ACRES ASSIGNED  
TO THIS WELL

320 DK MV / 160 CH

18. DISTANCE FROM PROPOSED LOCATION\*  
TO NEAREST WELL, DRILLING, COMPLETED,  
OR APPLIED FOR, ON THIS LEASE, FT.

145'

19. PROPOSED DEPTH

7,725'

20. ROTARY OR CABLE TOOLS

0' - 7,725' w/Rotary Tools

21. ELEVATIONS (Show whether DF, RT, GR, etc.)

6,734' Ground level

22. APPROX. DATE WORK WILL START\*

Summer 2002

23.

PROPOSED CASING AND CEMENTING PROGRAM

SIZE OF HOLE	GRADE, SIZE OF CASING	WEIGHT PER FOOT	SETTING DEPTH	QUANTITY OF CEMENT
12-1/4"	9-5/8", H-40	32.3#	265'	140 sx Class "B"
8-3/4"	7", J-55	20.0#	3,150'	275 sx Liteweight cement
6-1/4"	4-1/2", J-55	10.5#	7,725'	435 sx C1 "H" / Liteweight Cement

XTO Energy Inc. plans to drill the above mentioned well as described in the enclosed Surface Use Program.

Please note that XTO Energy Inc. also plans to surface commingle this well with an existing well located on the same lease.

RECEIVED

JUN 6 2002

IN ABOVE SPACE DESCRIBE PROPOSED PROGRAM: If proposal is to deepen, give location, present productive zone and proposed new productive zone. If proposal is to drill or deepen directionally, give pertinent data on subsurface locations and measured and true vertical depths. Give blowout preventer program, if any.

24.

SIGNED

JW Patton

TITLE Drilling Engineer

DATE 6/4/02

(This space for Federal or State office use)

PERMIT NO.

APPROVAL DATE

Application approval does not warrant or certify that the applicant holds legal or equitable title to those rights in the subject lease which would entitle the applicant to conduct operations thereon.

CONDITIONS OF APPROVAL, IF ANY:

APPROVED BY

Mr. [Signature]

TITLE

Act. Eng

DATE

7/8/02

\*See Instructions On Reverse Side

Title 18 U.S.C. Section 1001, makes it a crime for any person knowingly and willfully to make to any department or agency of the United States any false, fictitious or fraudulent statements or representations as to any matter within its jurisdiction.

NMOCD

DISTRICT I  
1625 N. French Dr., Hobbs, N.M. 88240

DISTRICT II  
811 South First, Artesia, N.M. 88210

DISTRICT III  
1000 Rio Brazos Rd., Aztec, N.M. 87410

DISTRICT IV  
2040 South Pacheco, Santa Fe, NM 87505

State of New Mexico  
Energy, Minerals & Natural Resources Department

Form C-102  
Revised August 15, 2000

Submit to Appropriate District Office  
State Lease - 4 Copies  
Fee Lease - 3 Copies

OIL CONSERVATION DIVISION  
2040 South Pacheco  
Santa Fe, NM 87505

☐ AMENDED REPORT

WELL LOCATION AND ACREAGE DEDICATION PLAT

<sup>1</sup> API Number 30-045-31126	<sup>2</sup> Pool Code 82329	<sup>3</sup> Pool Name OTERO CHACRA
<sup>4</sup> Property Code 22608	<sup>5</sup> Property Name FLORANCE	<sup>6</sup> Well Number 64F
<sup>7</sup> GRID No. 167067	<sup>8</sup> Operator Name XTO ENERGY INC.	<sup>9</sup> Elevation 6734'

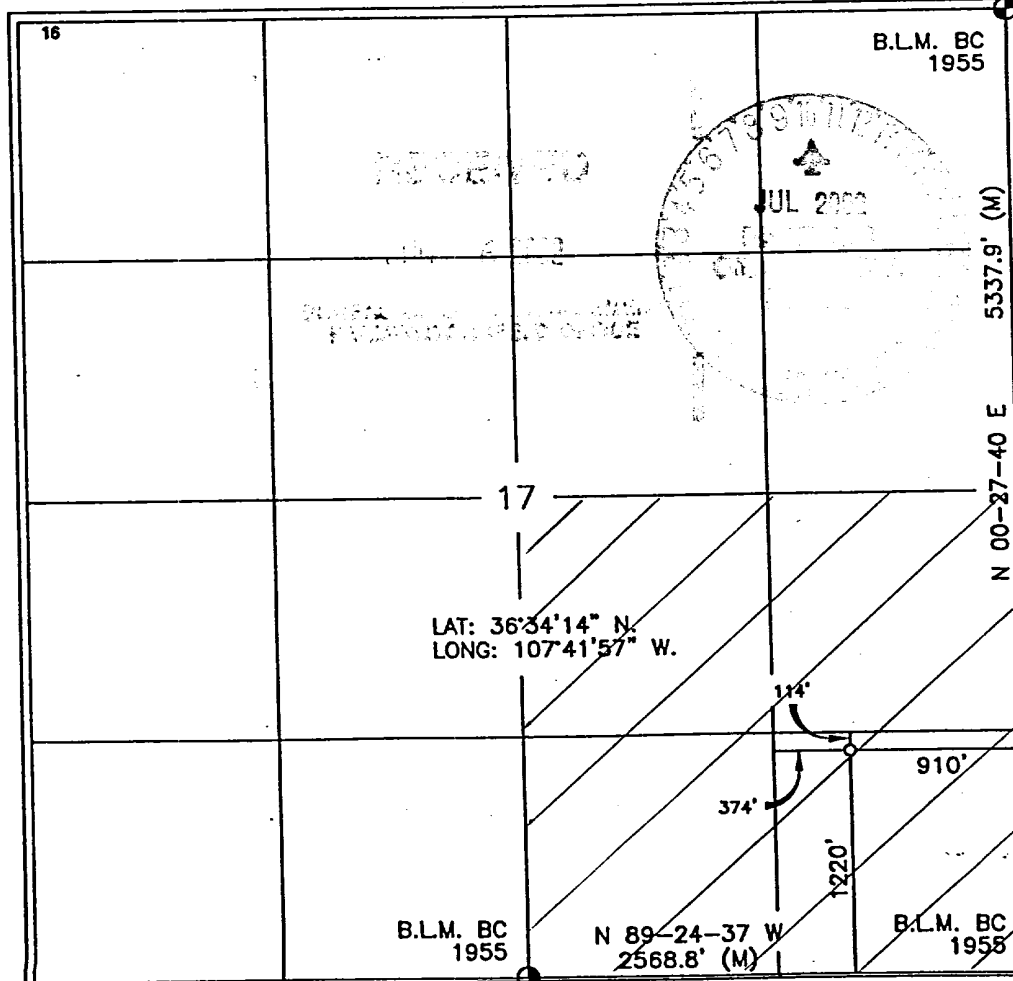
<sup>10</sup> Surface Location

UL or lot no.	Section	Township	Range	Lot Idn	Feet from the	North/South line	Feet from the	East/West line	County
P	17	27-N	8-W		1220'	SOUTH	910'	EAST	SAN JUAN

<sup>11</sup> Bottom Hole Location If Different From Surface

UL or lot no.	Section	Township	Range	Lot Idn	Feet from the	North/South line	Feet from the	East/West line	County
<sup>12</sup> Dedicated Acres 160 SE / 4		<sup>13</sup> Joint or Infill		<sup>14</sup> Consolidation Code		<sup>15</sup> Order No.			

NO ALLOWABLE WILL BE ASSIGNED TO THIS COMPLETION UNTIL ALL INTERESTS HAVE BEEN CONSOLIDATED  
OR A NON-STANDARD UNIT HAS BEEN APPROVED BY THE DIVISION



17 OPERATOR CERTIFICATION

I hereby certify that the information contained herein  
is true and complete to the best of my knowledge and  
belief

Signature Jeffrey W Patton  
Printed Name JEFFREY W PATTON  
Title DRILLING ENGINEER  
Date 6-3-02

18 SURVEYOR CERTIFICATION

I hereby certify that the well location shown on this plat  
was plotted from field notes of actual surveys made by  
me or under my supervision, and that the same is true  
and correct to the best of my belief.

Date of Survey SEP 10 2001  
Signature and Seal of DAVID R JOHNSON  
Professional Surveyor  
14827  
Certificate Number

DISTRICT I  
1625 N. French Dr., Hobbs, N.M. 88240

DISTRICT II  
811 South First, Artesia, N.M. 88210

DISTRICT III  
1000 Rio Brazos Rd., Aztec, N.M. 87410

DISTRICT IV  
2040 South Pacheco, Santa Fe, NM 87505

State of New Mexico  
Energy, Minerals & Natural Resources Department

Form C-102  
Revised August 15, 2000

Submit to Appropriate District Office  
State Lease - 4 Copies  
Fee Lease - 3 Copies

OIL CONSERVATION DIVISION  
2040 South Pacheco  
Santa Fe, NM 87505

☐ AMENDED REPORT

WELL LOCATION AND ACREAGE DEDICATION PLAT

<sup>1</sup> API Number 30-045-31126		<sup>2</sup> Pool Code 71599	<sup>3</sup> Pool Name BASIN DAKOTA
<sup>4</sup> Property Code 22608	<sup>5</sup> Property Name FLORANCE		<sup>6</sup> Well Number 64F
<sup>7</sup> OCRD No. 167067	<sup>8</sup> Operator Name XTO ENERGY INC.		<sup>9</sup> Elevation 6734'

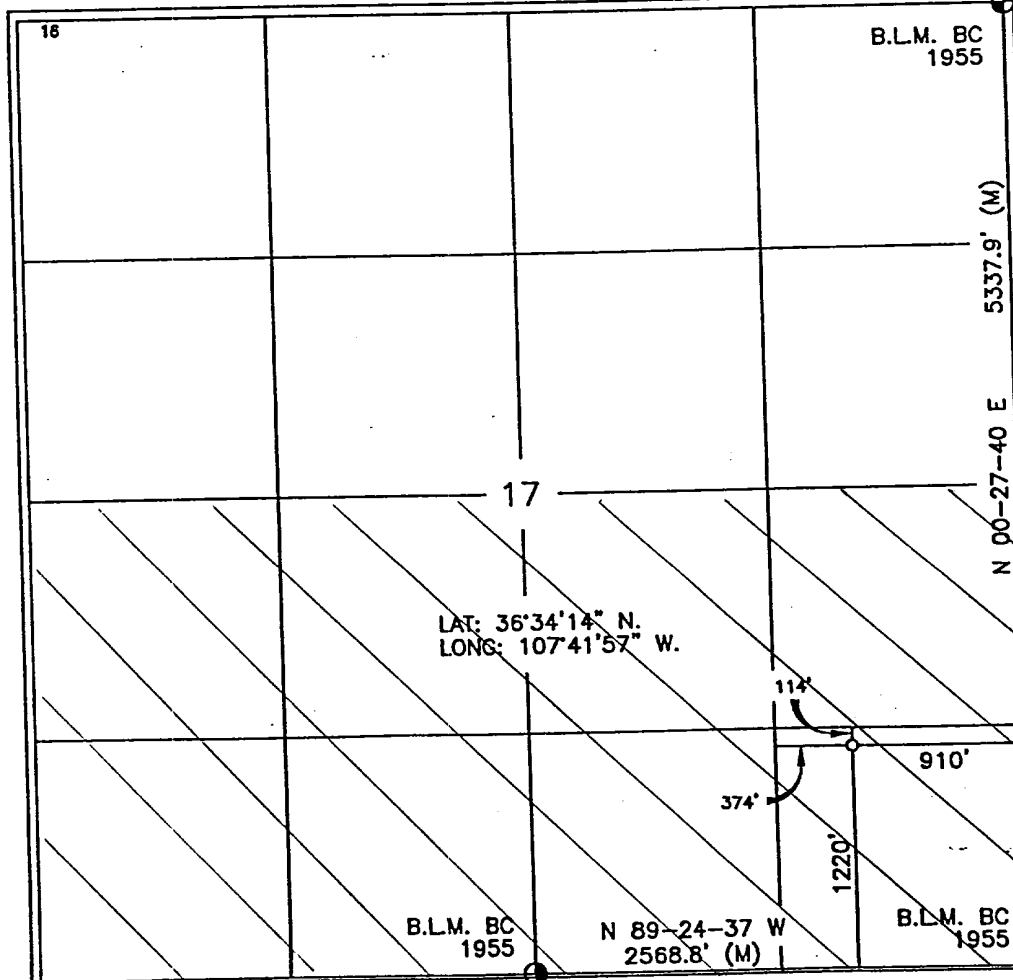
<sup>10</sup> Surface Location

UL or lot no.	Section	Township	Range	Lot Idn	Feet from the	North/South line	Feet from the	East/West line	County
P	17	27-N	8-W		1220'	SOUTH	910'	EAST	SAN JUAN

<sup>11</sup> Bottom Hole Location If Different From Surface

UL or lot no.	Section	Township	Range	Lot Idn	Feet from the	North/South line	Feet from the	East/West line	County
<sup>12</sup> Dedicated Acres 320		<sup>13</sup> Joint or Infill I		<sup>14</sup> Consolidation Code		<sup>15</sup> Order No.			

NO ALLOWABLE WILL BE ASSIGNED TO THIS COMPLETION UNTIL ALL INTERESTS HAVE BEEN CONSOLIDATED  
OR A NON-STANDARD UNIT HAS BEEN APPROVED BY THE DIVISION



17 OPERATOR CERTIFICATION

I hereby certify that the information contained herein  
is true and complete to the best of my knowledge and  
belief

Signature Jeffrey W Patton  
Printed Name JEFFREY W PATTON  
Title DRILLING ENGINEER  
Date 6-3-02

18 SURVEYOR CERTIFICATION

I hereby certify that the well location shown on this plat  
was plotted from field notes of actual surveys made by  
me or under my supervision, and that the same is true  
and correct to the best of my belief.

Date of Survey SEP 15 2001  
Signature and Seal DAVID R JOHNSON  
Professional Surveyor  
Certificate Number 14827

DISTRICT I  
1625 N. French Dr., Hobbs, N.M. 88240

DISTRICT II  
811 South First, Artesia, N.M. 88210

DISTRICT III  
1000 Rio Brazos Rd., Aztec, N.M. 87410

DISTRICT IV  
2040 South Pacheco, Santa Fe, NM 87505

State of New Mexico  
Energy, Minerals & Natural Resources Department

Form C-102  
Revised August 15, 2000

Submit to Appropriate District Office  
State Lease - 4 Copies  
Fee Lease - 3 Copies

OIL CONSERVATION DIVISION  
2040 South Pacheco  
Santa Fe, NM 87505

☐ AMENDED REPORT

WELL LOCATION AND ACREAGE DEDICATION PLAT

<sup>1</sup> API Number 30045-31126	<sup>2</sup> Pool Code 72319	<sup>3</sup> Pool Name BLANCO MESAVERDE
<sup>4</sup> Property Code 22608	<sup>5</sup> Property Name FLORANCE	<sup>6</sup> Well Number 64F
<sup>7</sup> OGRID No. 167067	<sup>8</sup> Operator Name XTO ENERGY INC.	<sup>9</sup> Elevation 6734'

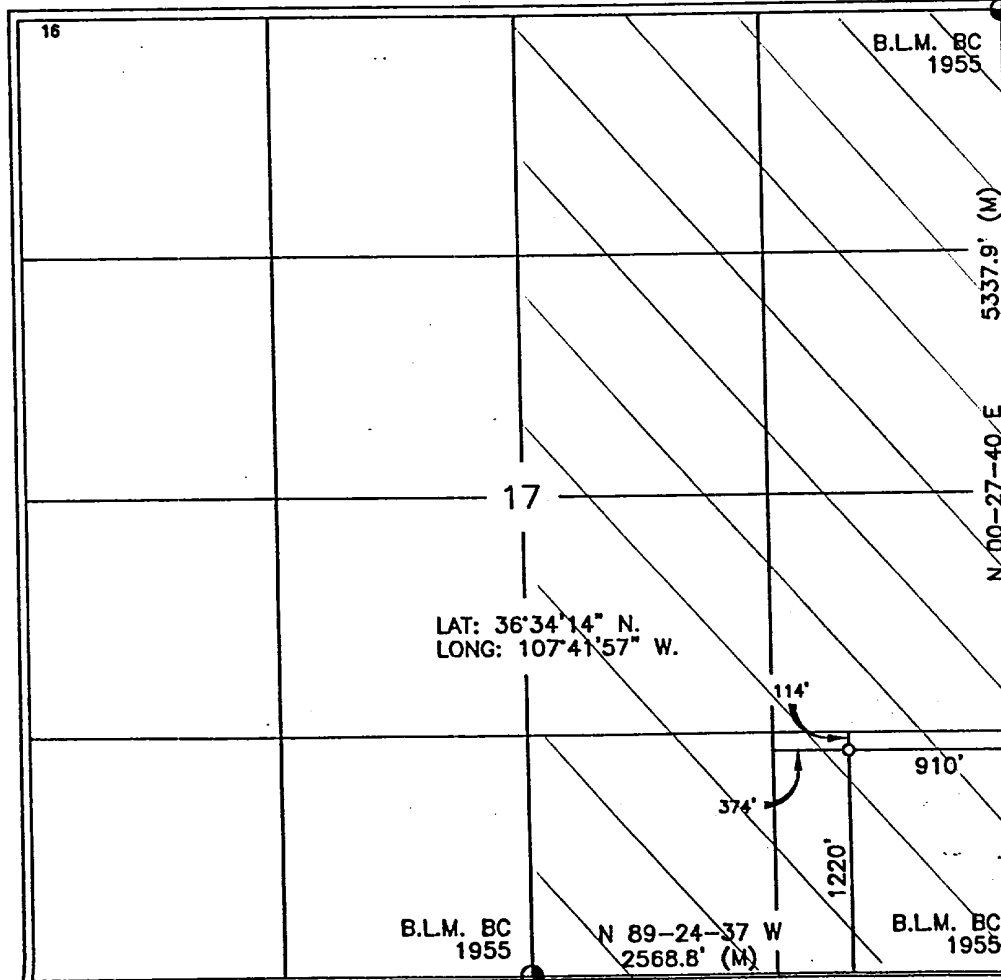
<sup>10</sup> Surface Location

UL or lot no.	Section	Township	Range	Lot Idn	Feet from the	North/South line	Feet from the	East/West line	County
P	17	27-N	8-W		1220'	SOUTH	910'	EAST	SAN JUAN

<sup>11</sup> Bottom Hole Location If Different From Surface

UL or lot no.	Section	Township	Range	Lot Idn	Feet from the	North/South line	Feet from the	East/West line	County
<sup>12</sup> Dedicated Acres 320 E/Z			<sup>13</sup> Joint or Infill I		<sup>14</sup> Consolidation Code		<sup>15</sup> Order No.		

NO ALLOWABLE WILL BE ASSIGNED TO THIS COMPLETION UNTIL ALL INTERESTS HAVE BEEN CONSOLIDATED  
OR A NON-STANDARD UNIT HAS BEEN APPROVED BY THE DIVISION



17 OPERATOR CERTIFICATION

I hereby certify that the information contained herein  
is true and complete to the best of my knowledge and  
belief

Signature Jeffrey W. Patton  
Printed Name JEFFREY W. PATTON  
Title DRILLING ENGINEER  
Date 6-3-02

18 SURVEYOR CERTIFICATION

I hereby certify that the well location shown on this plat  
was plotted from field notes of actual surveys made by  
me or under my supervision, and that the same is true  
and correct to the best of my belief.

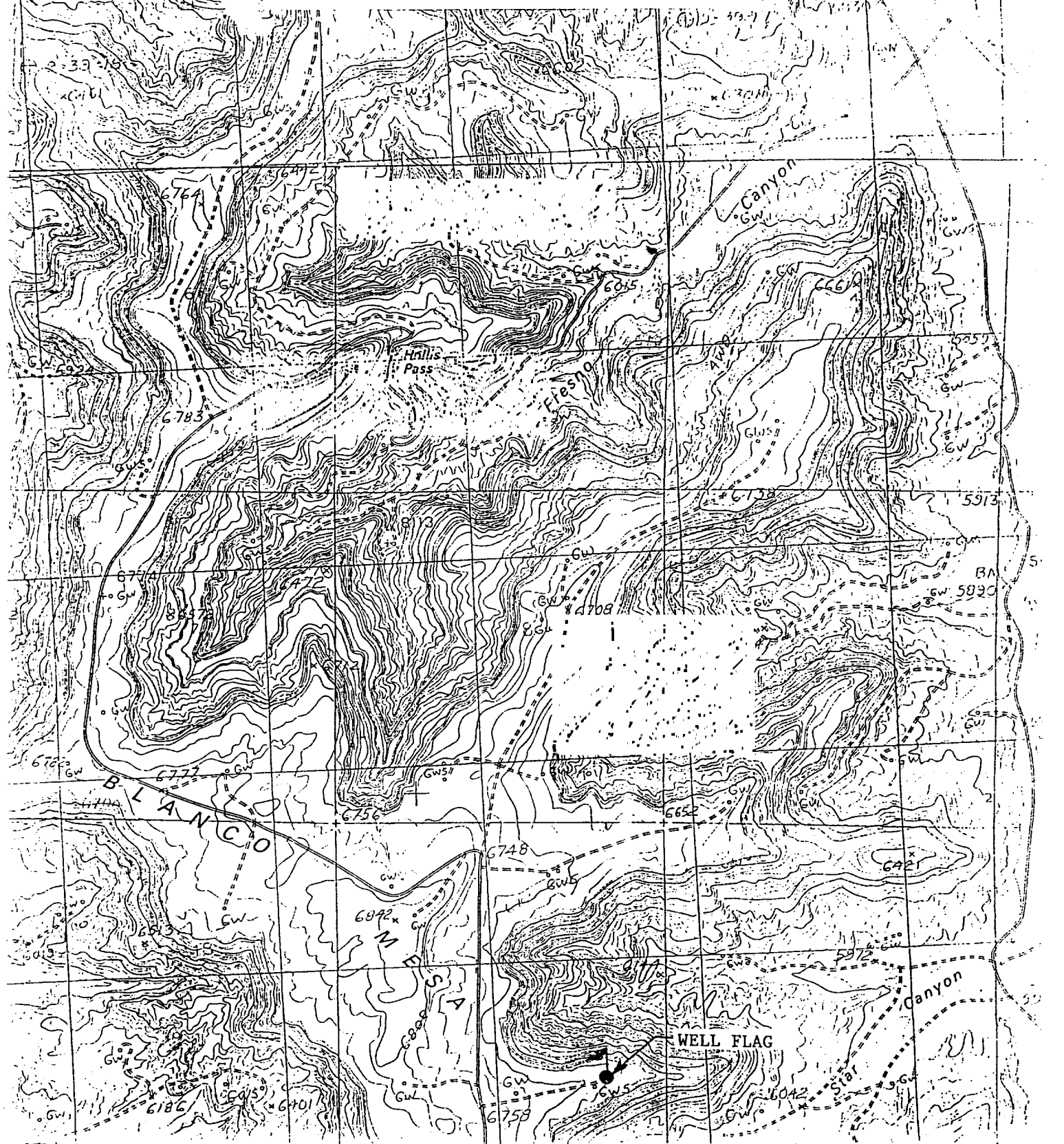
Date of Survey SEPT 2001  
Signature and Seal DAVID JOHNSON  
Professional Surveyor  
14827  
Certificate Number

260

(25)

**SAN JUAN COUNTY, NEW MEXICO**

1220' FSL      910' FEL



# XTO ENERGY INC.

Florance #64F

APD Data

June 4, 2002

Surface Location: 1,220' FSL & 910' FEL, Sec 17, T27N, R08W County: San Juan State: New Mexico

TOTAL DEPTH: ±7,725'

GR ELEV: 6,734'

OBJECTIVE: Dakota/Mesaverde/Chacra

Est KB ELEV: 6,747' (13' AGL)

## 1. MUD PROGRAM:

INTERVAL	0' to 265'	265' to 3,150'	3,150' to TD
HOLE SIZE	12-1/4"	8-3/4"	6-1/4"
MUD TYPE	FW/Native Mud	FW/Polymer	Air/Foam
WEIGHT	8.6-8.8	8.6-9.0	
VISCOSITY	28-32	29-34	
WATER LOSS	NC	NC	

Remarks: Use fibrous materials as needed to control seepage and lost circulation. Pump high viscosity sweeps as needed for hole cleaning. RU air compressors after setting the intermediate csg. Drill with air or foam to TD.

## 2. CASING PROGRAM:

Surface Casing: 9-5/8" casing to be set at ± 265' in 8.6 ppg mud

Interval	Length	Wt	Gr	Cplg	Coll Rating (psi)	Burst Rating (psi)	Jt Str (M-lbs)	ID (in)	Drift (in)	SF Coll	SF Burst	SF Ten
0'-265'	265'	32.3#	H-40	STC	1370	2270	254	9.001	8.972	5.98	5.68	15.73

Intermediate Casing: 7" casing to be set at ±3,150' in 9.0 ppg mud.

Interval	Length	Wt	Gr	Cplg	Coll Rating (psi)	Burst Rating (psi)	Jt Str (M-lbs)	ID (in)	Drift (in)	SF Coll	SF Burst	SF Ten
0'-3,150'	3,150'	20.0#	J-55	STC	2257	3740	234	6.456	6.331	1.15	1.31	2.57

Production Casing: 4-1/2" casing to be set at 7,725' in air.

Interval	Length	Wt	Gr	Cplg	Coll Rating (psi)	Burst Rating (psi)	Jt Str (M-lbs)	ID (in)	Drift (in)	SF Coll	SF Burst	SF Ten
0'-7,725'	7,725'	10.5#	J-55	STC	4010	4790	132	4.052	3.927	1.33	1.20	1.90

3. **WELLHEAD:**

- A. Bradenhead: 9-5/8" x 7" 2,000 psig WP (4,000 psig test).  
Casinghead: 7" x 4-1/2" 3,000 psig WP (6,000 psig test).

4. **CEMENT PROGRAM (Slurry design may change slightly, but the plan is to circulate cement to surface on both casing strings):**

- A. Surface: 9-5/8", 32.3#, H-40, STC casing to be set at  $\pm 265'$ .

Lead: 140 sx of Class "B" (Standard) cement containing 2%  $\text{CaCl}_2$ , ¼ pps celloflake, mixed at 15.6 ppg, 1.18 ft<sup>3</sup>/sk, & 5.20 gal wtr/sk.

*Total slurry volume is 166 ft<sup>3</sup>, 100% excess of calculated annular volume to 265'.*

- B. Intermediate: 7", 20.0#, J-55, STC casing to be set at  $\pm 3,150'$ .

Lead: 225 sx of Class "B" (Standard) cement containing  $\pm 3\%$  extender, ¼ pps celloflake and 2%  $\text{CaCl}_2$  mixed at 11.4 ppg, 2.88 ft<sup>3</sup>/sk, 17.89 gal wtr/sx.

Tail: 50 sx of Class "B" (Standard) cement containing ¼ pps celloflake and 2%  $\text{CaCl}_2$  mixed at 15.6 ppg, 1.18 ft<sup>3</sup>/sk, 5.20 gal wtr/sx.

*Total slurry volume is 707 ft<sup>3</sup>, circulated to surface. This value is 50% (excess) over gage hole volume.*

- C: Production: 4-1/2", 10.5#, J-55, STC casing to be set at  $\pm 7,725'$ . DV Tool @  $\pm 4,250'$ .

**First Stage:**

Lead: 135 sx of Class "H" Premium Lite High Strength (65/35/6), ¼ pps celloflake, 2% KCl, 0.5% fluidloss, 0.2% dispersant & 2% Phenoseal mixed at 12.5 ppg, 2.01 ft<sup>3</sup>/sk, 10.12 gal wtr/sx.

Tail: 150 sx of Class "H" Premium cement containing 4% gel (extender), ¼ pps celloflake, 0.5% fluidloss, 0.2% dispersant and 2% Phenoseal mixed at 14.7 ppg, 1.38 ft<sup>3</sup>/sk, 6.70 gal wtr/sx..

**Second Stage:**

Lead: 50 sx of Class "B" cement containing 3% extender & ¼ pps celloflake mixed at 11.4 ppg, 2.82 ft<sup>3</sup>/sk, 17.5 gal wtr/sx.

Tail: 100 sx of Class "B" cement containing ¼ pps celloflake and 2% Phenoseal mixed at 15.6 ppg, 1.18 ft<sup>3</sup>/sk, 5.20 gal wtr/sx..

*Total estimated slurry volume for the 4-1/2" production casing is 736 ft<sup>3</sup> for  $\pm 5,075'$  of fill. Est. TOC should be @  $\pm 2,650'$ . 35% (excess) over gage hole volume has been added to the number of sacks indicated..*

# BOP SCHEMATIC FOR DRILLING OPERATIONS CLASS 1 (2M) NORMAL PRESSURE

## TESTING PROCEDURE

### 1. Test BOP after installation:

Pressure test BOP to 200-300  
psig (low pressure) for 5 min.

Test BOP to Working Press or  
to 70% internal yield of surf csg  
(10 min).

### 2. Test operation of (both) rams on every trip.

### 3. Check and record Accumulator pressure on every tour.

### 4. Re-pressure test BOP stack after changing out rams.

### 5. Have kelly cock valve with handle available.

### 6. Have safety valve and subs to fit all sizes of drill string.

